



# The PREDICATOR

newsletter

VOLUME 59 | ISSUE 1 | JANUARY 2019

## IN THE SPOTLIGHT



### Tomorrow (Tuesday)! Useful Waste: An Initiative to Reuse and Repurpose Construction Mock-Ups

*Kourtney Strong, CSI, CDT, Programs Chair*

Join Julia Mollner and Rebecca Taylor as they discuss a PSU Center for Public Interest Design led initiative that aims to reframe the industry's view on construction waste and encourage material diversion and reuse.

The intent of this initiative is to utilize an overlooked material resource (standalone construction mock-ups) by repurposing the material and responding to pressing social needs, such as the local housing emergency. These are two very promising Emerging Professionals with a unique idea for helping the housing problems in Portland.

Don't miss this event! [Register Here!](#) Walk-in's will also be welcome.

## PRESIDENT'S MESSAGE

### Got News?



### In this Issue

[January Chapter Meeting: Useful Waste](#)

[President's Message: Happy New Year](#)

[Learning and Libations New Years' Resolutions](#)

[CDT Emerging Professional Scholarship](#)

[Spring CDT Classes](#)

[Industry Forum: SAVE THE DATE](#)

[New, Emeritus, and Renewed Members](#)

[West by Northwest Bi-Region Conference](#)

### Upcoming Events

2019

**January 8**  
Chapter Meeting: Useful Waste

**January 31**  
Learning & Libations Series: Concrete



## President's Message: Happy New Year

*Ali LaManna, CSI, CDT, Portland Chapter President*

Happy New Year!

Welcome to 2019! I'm not sure what happened to 2018. I feel like it was just yesterday we were saying good bye to 2017. It has definitely been a busy year! However, I am ready to hit the ground running. We have a lot of great events in the works at Portland CSI. We are also striving to make some improvements to how we function as a chapter to make sure we continue to provide value and support to our members. We will have more on that in the coming months. Here is a preview of the events we have coming up in 2019:

- January 8 - Chapter Meeting: Useful Waste
- January 31 - Learning and Libations: Changing the Language of Polished Concrete
- February 6 - CDT Spring Study Classes Start - Webinar Option Available!
- February 12 - Fall in Love with CSI: New Member Orientation and get to know CSI better
- February 28 - Learning and Libations: Green Roofs and the New Portland Code
- March 14 - 2019 Industry Forum - over 300 people attend this event!
- March 19 - Learning and Libations: Roofing with Keith Schwarting
- April 9 - Chapter Meeting: The Oregon Zoo Bond - At the Oregon Zoo!
- June 11 - The 7th Annual Chili Cook-Off and Awards Night - Team Registration is Open!
- August 22 - Portland CSI Annual Golf Tournament

Our Emerging Professional CDT Scholarship deadline has been extended to January 18th. If you know anyone with less than 10 years experience in the industry that would like to participate, please see the details below. Also remember that all emerging professionals can attend our Chapter Meetings for \$10 whether or not they are a member.

Let's make 2019 the spark for spreading the flame of knowledge to the next generation of industry professionals!

## EDUCATION



## New Years' Resolution to Educate

*Mark Aasland, CSI, CDT, Education Co-Chair*

**February 6**  
CDT Classes Start

**February 28**  
Learning & Libations  
Series: Green Roof &  
Code Changes

**March 14**  
Portland CSI  
Industry Forum 2019  
Portland Art Museum

**March 19**  
Learning & Libations  
Series: Roof  
Preservation

**April 25-27**  
CSI West & Northwest  
Bi-Region Conference

---

## CSI Sponsors

[Support CSI, Learn How Here >](#)

---

CSI Portland 2018-  
2019 Focus/Goals

***To increase  
communication and  
build relationships  
within the AEC  
industry.***

1. Engage current members/recruit new members
2. Increase visibility
3. Re-define education offerings

After a series of successful events in 2018 the Education Committee is excited to announce the first event on the 2019 Learning & Libations calendar. Our first is **Changing the Language of Polished Concrete: Succeeding at Architecturally Exposed Concrete (AESC)** presented by Chris Bennett. Come learn how to design and specify polished concrete with higher resiliency (sustainability) and shortened construction schedules using quantifiable, easy benchmarks as a foundational model.



This event will take place **January 31st from 5:30 to 7:30** at the Rogue Eastside Barrel Room located at 928 SE 9th Avenue.

Registration for this event is available on the Chapter Website at [CURRENT EVENTS >](#)

### **UPCOMING LEARNING & LIBATIONS EVENTS**

#### **February 28, 2018**

Topic: Green Roof and Code Changes, presentation by Scott Huff, CSI Independent Sales Representative with [D-Seven](#), LLC

#### **March 19, 2019**

Topic: Roof Preservation; A Sustainable Option, presentation by Keith Schwarting, CSI, CDT with Tremco Roofing and Building Maintenance

#### **Week of April 15, 2019**

Topic: Stucco & Levels of Finish, presentation by John Killin, Terry Kastner & Peter Burns

## CERTIFICATION



### **Portland CSI CDT Scholarships for Emerging Professionals - DEADLINE EXTENSION**

*Cherise Lakeside, CSI, CDT, Certifications Chair*

The Portland Chapter of CSI is offering CDT certificate scholarships to architects, design consultants, engineers, contractors, subcontractors and product representatives with less than 10 years industry experience who would like to earn their CDT Certification and get involved with Portland CSI. Please forward this information to anyone you know who would be interested in obtaining their CDT certificate.

The application deadline has been extended to **January 18th, 2019**. Scholarship recipients will be announced January 21<sup>st</sup>, 2019.

#### **Included in the Scholarship:**

- National membership dues\* (if not already a member) for the first year (**you pay the first \$100**, and the scholarship covers the balance)



- CSI Portland Chapter membership dues\*
- CDT study classes beginning Feb. 2019
- Exam registration fees (You pay exam fee up front and are reimbursed upon passing only)

\*Membership dues after year 1 will be the responsibility of the recipient

**Scholarship Applicant Qualifications:**

- You must be a current CSI member or obtain CSI membership. View benefits of membership [here](#).
- Have less than ten years' experience in your field (any discipline related to AEC).
- Commit to one year of participation on a CSI Portland committee of your choice. View list [here](#).
- Pay your own membership and exam fee up front. Reimbursement is immediate for membership, less the first \$100, and for the exam upon passing.

To apply, please send an e-mail with the following information to [cheriselakeside@gmail.com](mailto:cheriselakeside@gmail.com)

- Name
- Firm/Company, School, or Self-Employed
- Address
- Phone
- Email
- Years of experience
- Discipline (i.e. architect, consultant, contractor, product rep)
- Committee(s) of interest
- Paragraph about why you are pursuing a CDT certificate and what you hope to achieve with the designation
- CSI member number

Did someone recommend this scholarship to you? If so, who?



**Portland CSI Spring CDT Classes Announced!**

*Cherise Lakeside, CSI, CDT, Certifications Chair*

Classes begin February 6th at the offices of PAE Engineering.

**SOMETHING NEW THIS YEAR: PAE has graciously agreed to let us use their AV technology so we can also offer this series via live webinar** for those that have a difficult time making it to the class (product reps who are traveling, live out of the PDX area, etc.) While physical attendance is always best so you can ask questions and collaborate with other attendees, we recognize that this is difficult for some.

Something to Consider: Become a Portland CSI Member! The difference in costs for Member vs. Non-Member more than cover a Portland CSI Membership. Why not get certified AND have access to incredible industry education and events all year long. Trust me, you will thank me later!

**Where:**

PAE Engineers  
522 SW 5th Avenue, #1500 (Main doors lock at 6pm. You must arrive prior to that time.)  
Portland, Oregon 97204

**All classes will be held from 6pm to 8pm on the following dates:**

Wednesdays - February 6, 13, 20, 27 - March 6, 13, 20, 27 - April 3

**Contact:** Cherise Lakeside, Instructor, Portland CSI,  
[cheriselakeside@gmail.com](mailto:cheriselakeside@gmail.com)

For more information on class costs, test registration costs and deadlines, test study materials, and testimonials on why this certification is worth your investment of time and money, please visit our [website](#).

## INDUSTRY FORUM



### Save the Date: 2019 Industry Forum

*Tony DiVincenzo, CSI, Industry Forum Chair*

Save the date for the 2019 Industry Forum - March 14, 2019 at the Portland Art Museum. It promises to be an afternoon of information and a stimulating look at what's new and innovative in the building and construction industry. Building on past favorites, the 2019 event will include:

- **5x10s** -Five ten-minute (hence "5 x 10") presentations by students and professionals on innovations in building design and construction.
- **Speed Education** (in partnership with AIA Portland) - Gain valuable knowledge and earn 1.5 HSW CEU's in this fun, fast paced educational event. Learn the latest need-to-know product information, grow your resource library, and make new connections with up to 6 vendors... all in one 90-minute session.
- **Keynote Address** - Our Keynote Speaker this year is Adèle Naudé Santos, FAIA, ARCUK, an architect and planner whose career combines professional practice, research and teaching. Her work is widely known for design excellence. Ms. Santos has won international design competitions, published work in journals world-wide, and worked in cultures as diverse as Japan, Africa and the United States. Ms. Santos will focus on her most recent professional practice and academic efforts in the realm of housing and affordable communities.

The 2018 Industry Forum became the most successful yet! Thanks to AIA Portland, the thirty-two exhibit sponsors, and the local design community, the event was host to over 300 guests and nearly 60 sponsor representatives. If you have not attended this design event in the past, see a full recap [HERE](#) and find photos in the Portland Chapter

CSI website "photo gallery" [HERE](#). See the Portland Chapter CSI [YouTube Channel](#) for past Industry Forum presentations.

### **2019 CSI Industry Forum - Sponsorship Opportunities**

Part of the success of the Industry Forum is the vendor product exhibit. This is a key opportunity to showcase your company's products and/or services to the decision-makers in the industry and interact with your potential clients one-on-one. Don't let your competitor be the only one attending. Consider a sponsorship today.

Did we mention the Industry Forum is attended by designers, engineers, contractors, product representatives and project owners? There are many levels of participation for sponsors of this year's event to interact with the myriad of attendees. In addition to this year's list of exhibit sponsor levels - Platinum, Gold or Silver - several "A La Carte" options are available, including ads in a newly expanded event program. For those wishing to participate with or without a display table check out the many alternative opportunities. [BE A SPONSOR HERE >](#)

Individual tickets are just \$25 or get invited to the Industry Forum - contact your favorite sponsor and tell them you'd like to attend as their guest! [REGISTER HERE >](#)

For more information contact Industry Forum Committee Co-Chairs - [Tony DiVincenzo](#) or [Randy Page](#).

## MEMBERSHIP

### New, Emeritus, and Renewed Members September 2018

*Lee Kilbourn, FCSI, Member Emeritus, CCS, FAIA*

#### **NEW MEMBERS**

- Nora Vivarelli, CSI; Pacific Mat; member since 2018

#### **MEMBERS EMERITUS** (September Anniversary Date)

- Edward Fatz, CSI, CDT; member since 1992

#### **RENEWING MEMBERS**

- Dean Aldrich, Esq., CSI; Aldrich Eike PC; member since 1996
- Gene Fosheim, MS, MA, FCSI, CD; member since 1997 - **NEW TO PORTLAND CHAPTER**
- Angela Frye, CSI; PPG Industries; member since 2014
- John Killin, CSI; NW Wall and Ceiling Bureau; member since 2013
- Dennet Latham, CSI, CCS, AIA, LEED AP; Architect; member since 1980
- Phil Madden, CSI, AIA, LEED AP, NCARB; member since 2016
- John Maternoski, CSI-EP; member since 2008
- Ray Rauscher, CSI; Speedy Glass Commercial Division; member since 2015
- Randall Rieks, CSI, CDT; member since 2016
- David W Ware, CSI, CDT, ASHRAE, LEED GA, USGBC; Knauf Insulation; member since 2013
- Richard Wickizer, CSI, CDT; Wickizer & Associates; member since 2012
- James Wilson, CSI, CCS; SRG Partnership, P.C.; member since 1989

## INDUSTRY NEWS



## West by Northwest Bi-Region Conference in Downtown LA

*Ellen Onstad, CSI, CDT*

Where: Sheraton Grand Los Angeles, Los Angeles, CA

When: April 25-27, 2019

Who: Network the whole weekend with design & construction professionals. Get to know people who can help you throughout your career. Perhaps make some new friends. Attend the tradeshow, see new products & enjoy some food & drinks. Meet the architects, specifications writers, designers, facilities construction teams & engineers who specify construction products.

What: Hear exciting Keynote and Technical Speakers. Listen to educational sessions on high level technical topics & the transformation of DTLA. Work with a team on "Let's Fix Construction." Attend leadership education & trusted advisor training.

For more information about events and lodging, visit the [LACSI website](#).

*CSI's mission is to advance building information management and education of project teams to improve facility performance. We are the only organization that brings together all the players in the building industry.*



VOLUME 59 | ISSUE 2 | FEBRUARY 2019

## IN THE SPOTLIGHT



### February Chapter Meeting - Fall In Love with CSI (Again)!

*Kourtney Strong, CSI, CDT Programs Chair*

Fall in love with CSI! Come learn about what we have to offer and drink some great beer at Rogue! Tuesday, February 12th at 5:30pm. Free Event! Who knows, maybe you'll meet your valentine?

This will also be our New Member Orientation!

Don't miss this event! [Register Here!](#) Walk-in's will also be welcome.

## PRESIDENT'S MESSAGE

### Got News?



### In this Issue

[February Chapter Meeting: Fall In Love with CSI](#)

[President's Message: The Shortest Month of the Year](#)

[Learning and Libations Recap](#)

[New Connections: UPDATED EMAIL ADDRESSES](#)

[Industry Forum: SAVE THE DATE](#)

[New, Emeritus, and Renewed Members](#)

[West by Northwest Bi-Region Conference](#)

[CSI NW Region: President Elect and Treasurer Call for Nominations](#)

### Upcoming Events

**2019**

**February 6**  
CDT Classes Start





## President's Message: The Shortest Month of the Year

*Ali LaManna, CSI, CDT, Portland Chapter President*

February is upon us. A unique month in many interesting (perhaps devastating) ways. This is the only month with 28 days, except when it has 29. This is Black History Month, which somehow seems inadequate to the duration needed to celebrate the history of an entire race. This is the month with a day to celebrate love, which also shares its date with a bloody massacre. This is the month where a rodent prognosticates our weather. And apparently, like every dramatic sequel, 25 months later this the month where that weather is supposed to be Snowpocalypse Part Deux.

I hope your New Year's resolutions are still on track. I am trying hard to make sure I stay on top of my list of todos. My resolution this year is to complete the items that have been on my list for over a year. Between work, CSI, and our family farm on the weekends, there are several dozen items on that ever growing list. Much as you all are no doubt finding in your personal and professional lives, Jake and I seem to have less and less time to accomplish more and more.

For us, this means that we endeavor to find the right tools to improve the quality of our projects while using our limited time more efficiently.

Portland CSI is going through some of the same growing pains to find those optimal tools for improving our outreach. We have expanded our social media reach from Twitter to Facebook, Instagram, and LinkedIn. We have increased the number of email addresses (see the Connections section below) to make it easier for you, the Portland Chapter membership, to reach the right volunteer to answer your question. All the while, your Board is endeavoring to deliver high quality learning and networking opportunities in a fiscally responsible manner.

We are a strong chapter with a lot of dedicated volunteers. Every event we put on, every communication that goes out is put together by a volunteer. My task as President has been two-fold. First, to make sure we are providing the best tools for our volunteers to use their limited time efficiently. Second, to make sure those tools fit within the budget supplied to us by the membership and the sponsors who find value in supporting our educational and networking events.

Again, I hope this message finds your resolutions on track. I, for one, get to check one more item from my todo list today.

### February 28

Learning & Libations  
Series: Green Roof &  
Code Changes

### March 14

Portland CSI  
Industry Forum 2019  
Portland Art Museum

### March 19

Learning & Libations  
Series: Roof  
Preservation

### April 9

Chapter Meeting: Zoo  
Bond Projects  
A Design Week Event!

### April 25-27

CSI West & Northwest  
Bi-Region Conference

---

## CSI Sponsors

[Support CSI, Learn How  
Here >](#)

---

## CSI Portland 2018- 2019 Focus/Goals

***To increase  
communication and  
build relationships  
within the AEC  
industry.***

1. Engage current members/recruit new members
2. Increase visibility
3. Re-define education offerings



## Polished Concrete at Face Value

*Jenn Thomas, CSI, Education Co-Chair*



Acrylic Sealed, Guard "Burnished", Epoxy, Refined/"polished", these are all types of polished concrete. So which one is the best fit for your next project? Chris Bennett spoke at The Barrel Room in Rogue Eastside on January 31st and explained that the differences are as easy as telling the difference between Copper River Salmon and chicken

nuggets if you know what to look for. Chris stated, "Concrete polishing is the act of changing a concrete floor surface, with or without aggregate exposure, to achieve a specified level of appearance using one the listed classifications: Bonded Abrasive Polished Concretes, Burnished Polished Concrete, or Hybrid Polished Concrete." You have to consider grit, polish, and distinctness of image (DOI). Also be aware of what you are receiving. The amount of upkeep for each type varies. Some have shorter lifespans than others. In some cases you are getting a very thin topcoat of epoxy that will easily chip with time. Know what kind of diamond polishing pads are being used. Also be aware of the credentials (or lack of credentials) of the person doing the job. All of these factors determine whether you are getting Copper River Salmon or chicken nuggets at the end of the day.

Paul Phillippe Cret once said, "Of the many doorways we pass in a short walk, most are fulfilling their purpose, most of them are well-enough built. How many are worth a second look?" To this Chris Bennett encourages us all to carefully consider our next polished concrete project. In fact, if you are working on any projects that require bike storage in the near future, Chris wants to speak with you.

### **UPCOMING LEARNING & LIBATIONS EVENTS**

#### **February 28, 2018**

Topic: Green Roof and Code Changes, presentation by John Herrmann, Founder and President Bain Associates

#### **March 19, 2019**

Topic: Roof Preservation; A Sustainable Option, presentation by Keith Schwarting, CSI, CDT with Tremco Roofing and Building Maintenance

#### **Week of April 15, 2019**

Topic: Stucco & Levels of Finish, presentation by John Killin, Terry Kastner & Peter Burns

**NEW CONNECTIONS**



## ***NEW*** Portland CSI Emails

*Jake LaManna, CSI, CDT, Secretary*

Portland CSI now has new emails for getting in touch with us.

### **Office@portlandcsi.org**

This is still the catch all for questions and inquiries. Any emails sent to Office will be directed to the correct person.

### **ChapterMeetings@portlandcsi.org**

Chapter Meeting invitations will be sent from this email. This is also the place to send questions regarding upcoming chapter meetings, CEUs, and if you have ideas for a good presentation.

### **LearningandLibations@portlandcsi.org**

Learning and Libation invitations will come from this email. Please send any questions you have about L&L events or topic ideas to this email.

### **IndustryForum@portlandcsi.org**

All topics Industry Forum should be sent to this email. If you have questions regarding sponsorships, event information, etc, email here.

### **Membership@portlandcsi.org**

Our new membership email is for the committee to connect closer with our membership. Feel free to send them any questions or suggestions on how to improve your membership experience.

## INDUSTRY FORUM



## 2019 Industry Forum

*Randy Page NCARB, LEED AP, CSI Board Member*

Save the date for the 2019 Industry Forum - March 14, 2019 at the Portland Art Museum. It promises to be an afternoon of information and a stimulating look at what's new and innovative in the building and construction industry. Building on past favorites, the 2019 event will include:

**5x10's** - Five ten-minute (hence "5 x 10") presentations by students and professionals on innovation and exciting, creative participation in building design and construction.

**Speed Education (in partnership with AIA Portland)** - Have some fun earning 1.5 HSW CEU's in this fast paced event. Learn the latest need-to-know product information, grow your resource library, and make new connections with up to 6 vendors... all in 90-minutes.



**Keynote Address** - Our Keynote Speaker this year is Adèle Naudé Santos, FAIA, ARCUK, an architect and planner whose career combines professional practice, research and teaching. Her work is widely known for design excellence. Ms. Santos has won international design competitions, published work in journals world-wide, and has worked in cultures as diverse as Japan, Africa and the United States. Ms. Santos will focus on her most recent professional

practice and academic efforts in the realm of housing and affordable communities.

The 2018 Industry Forum became the most successful yet! Thanks to AIA Portland, thirty-two exhibit sponsors, and the local design community, the event was host to over 300 guests and nearly 60 sponsor representatives. If you have not attended this design event in the past, see a full recap [HERE](#). See the Portland Chapter CSI YouTube Channel for past Industry Forum presentations.



**2019 CSI Industry Forum Guests Registration - three options:**

- 1) Individual [registration](#) is just \$25.
- 2) Emerging Professionals use Promo Code **EP2019** to [register](#) for Free!
- 3) As a Guest of a favorite Sponsor Exhibitor. Contact your favorite sponsor and tell them you'd like to attend as their guest!



### Current 2019 Sponsor Exhibitors

<b>Advanced Architectural Products</b>	Tom	Brosnan	Gold Sponsor
<b>Bain Associates, Inc</b>	Owen	Elkins	Gold Sponsor
<b>BORAL: Cultured Stone &amp; Eldorado Stone</b>	Maddie Carde/Matt Wilson		Silver Sponsor
<b>Bemo USA</b>	Graydon	Cox	Silver Sponsor
<b>Carleton Hart Architecture</b>	Corey	Morris	Silver Sponsor
<b>CERACLAD Fiber Cement Rainscreen Cladding</b>	Stan	Rochlin	Silver Sponsor
<b>CPI Daylighting</b>	Rafael	Rivero	Gold Sponsor
<b>DeaMor Associates</b>	Jody	Moore	Platinum Sponsor
<b>Dorken</b>	Tony	Camp	Gold Sponsor
<b>Fortifiber</b>	Frank	Mendez	Silver Sponsor
<b>Georgia-Pacific Gypsum</b>	Tim	Millsaps	Silver Sponsor
<b>Guardian Glass</b>	Bryce	Given	Gold Sponsor
<b>Hoover Treated Wood Products</b>	Frank	Stewart	Silver Sponsor
<b>Ideate+IMAGINIT</b>	Tony	DiVincenzo	Platinum Sponsor
<b>Interior Technology</b>	Dan	Quatier	Event Sponsor
<b>IWP</b>	Bob	Berwick	Gold Sponsor
<b>Neolith</b>	Peter	Wazna-Blank	Gold Sponsor
<b>Parklex USA</b>	Todd	Ketcham	Gold Sponsor
<b>PPG Paints</b>	Susan	Williams	Gold Sponsor
<b>PPI Group, a Topcon Solutions Store</b>	Wendy	Finch	Platinum Sponsor
<b>PRECISION IMAGES</b>	Erica	Bitterman-Ryon	Gold Sponsor
<b>Rodda Paint / Cloverdale Paint</b>	Jeff	McIntyre	Silver Sponsor
<b>HDG/Thermory - Shaw Designer Resources</b>	John	Shaw	Silver Sponsor
<b>Lacey Glass/Ceraclad - Shaw Designer</b>	John	Shaw	Silver Sponsor
<b>Skyco/Mermet - Shaw Designer Resources</b>	John	Shaw	Silver Sponsor
<b>Sherwin-Williams</b>	Anna	Atchison	Silver Sponsor
<b>Todd Construction</b>	Vicki	Menard	Platinum Sponsor
<b>Tremco Roofing and Building Maintenance</b>	Desiree	Huff	Silver Sponsor
<b>VaproShield</b>	Nicole	Anderson	Silver Sponsor
<b>Window Tech Inc.</b>	Bud	Henson	Gold Sponsor
<b>Woodwork Institute</b>	Jack	Livingston	Silver Sponsor

# INDUSTRY FORUM 2019

MARCH 14, 2019

Register  
Now



## MEMBERSHIP

### New, Emeritus, and Renewed Members October 2018

*Lee Kilbourn, FCSI, Member Emeritus, CCS, FAIA*

#### NEW MEMBERS

- Kevin Bower, CSI; Harper Winn; member since 2018
- Mary McMahon, CSI-EP; CNA Surety; member since 2018
- Michael Williams, CSI-EP; OBEX Co.; member since 2018

#### MEMBERS EMERITUS (October Anniversary Date)

- J. Laurence Chew, CSI, CCS; member since 1989
- J. Min Luey, CSI; member since 1968

#### RENEWING MEMBERS

- Hunter Bennett-Daggett, CSI, CDT; TetraTech; member since 2017
- Rod Clark, CSI, CDT; Therma-TRU; member since 2005

- Tim Cockburn, CSI, CDT; Propel Insurance; member since 1991
- R. Michael Ghiotto, CSI, CCPR; Woodfold Mfg. Inc.; member since 2011
- Cody Grabenhorst, CSI-EP; Malarkey Roofing; member since 2012
- Bud Henson, CSI, CDT; Window Tech Inc.; member since 1997
- David Ingraham, CSI; Willamette Graystone; member since 2014
- Richard Jermain, CSI, CDT, AHC; Allegion; member since 2004
- Cherise Lakeside, CSI, CDT; LSW Architects; member since 2011
- Michael Riscica, CSI, CDT, AIA; YoungArchitect.com; member since 2016
- Steven Smith, CSI; Laticrete International, Inc.; member since 2017
- Terry Wildeboer, CSI; Isolatek International; member since 1991
- Nick Wutzke, CSI; Halfen USA; member since 2012

## INDUSTRY NEWS



### West by Northwest Bi-Region Conference in Downtown LA

*Ellen Onstad, CSI, CDT*

Where: Sheraton Grand Los Angeles, Los Angeles, CA

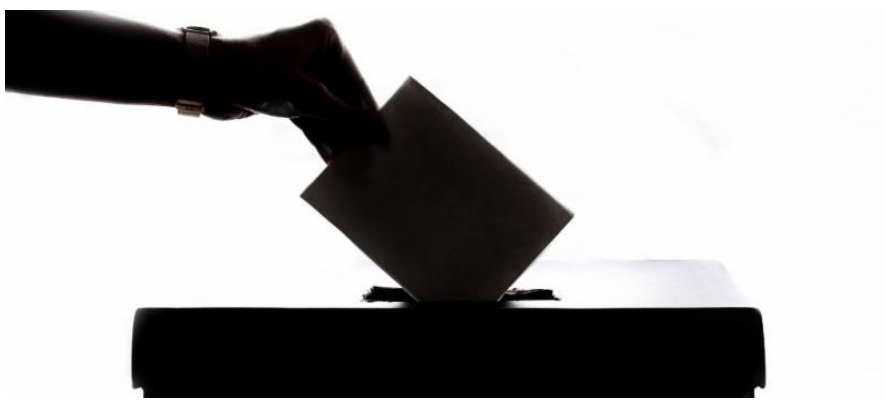
When: April 25-27, 2019

Who: Network the whole weekend with design & construction professionals. Get to know people who can help you throughout your career. Perhaps make some new friends. Attend the tradeshow, see new products & enjoy some food & drinks. Meet the architects, specifications writers, designers, facilities construction teams & engineers who specify construction products.

What: Hear exciting Keynote and Technical Speakers. Listen to educational sessions on high level technical topics & the transformation of DTLA. Work with a team on "Let's Fix Construction." Attend leadership education & trusted advisor training.

For more information about events and lodging, visit the [LACSI website](#).

## REGION HAPPENINGS



## CSI NW Region: President Elect and Treasurer Call for Nominations

*Mary Ann Shephard, CSI*

The NW Region is seeking nominations for President Elect and Treasurer. President 2020 - 2021 (1 year term). Duties include:

- Participate as President-Elect (1 year term) 2019-2020 in monthly region conference calls and at Region Conferences if possible.
- Represent the Region at Region, Chapter, and Institute functions.
- Schedule, make arrangements for, and preside at Region meetings, typically a conference call format.
- Visit each chapter during term of office whenever possible.
- Assist with Region Conferences.
- Coordinate with the Institute Director elected by the Region's membership to bring the Region's issues to Institute for discussion and resolution, and to bring Institute's programs to the Region for implementation.

Treasurer 2019 - 2021 (2 year term). Duties include:

- Verify accounting from previous treasurer.
- Maintain accurate records of accounts, which consists of maintaining the region checkbook and all transactions.
- Monitor transactions and resources, indicating amounts and destination of disbursements.
- Report and submit financial information at monthly region calls/meetings.

Send nominations to Mary Ann Shepherd at [maryann@appliedbuildinginformation.com](mailto:maryann@appliedbuildinginformation.com) by February 15, 2019.

*CSI's mission is to advance building information management and education of project teams to improve facility performance. We are the only organization that brings together all the players in the building industry.*



VOLUME 60 | ISSUE 3 | MARCH 2019

## In the Spotlight!

### In This Issue

Industry Forum March 14th

President's Message

Vegetated, Not Green

What's Happening at Industry Forum?

Fore!

Calling Future Leaders

Members

Northwest Region Happenings

### Upcoming Events

March 14 -  
[Industry Forum](#)

March 19 -  
Learning and Libations: Roof Preservation

April 9 -  
Chapter Meeting: Walk on the Wild Side - the Final 3 Bond Projects at the Oregon Zoo

## INDUSTRY FORUM 2019

MARCH 14, 2019

Register  
Now



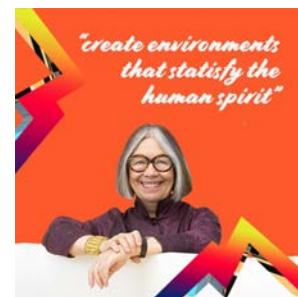
## Industry Forum - It's Here!

It's here! The **2019 Industry Forum** is soon to open on **March 14, 2019** at the Portland Art Museum. It promises to be an afternoon of information and a stimulating look at what's new and innovative in the building and construction industry. Building on past favorites, the 2019 event will include:

**5x10's** – Five ten-minute (hence “5 x 10”) presentations by students and professionals on innovation and exciting creative participation in the building design and construction industry.

**Speed Education** (in partnership with AIA Portland) – Have some fun earning 1.5 HSW CEU's in this fun fast paced event. Learn the latest need-to-know product information, grow your resource library, and make new connections with up to 6 Sponsors ... all in 90-minutes.

**Keynote Address** – Our Keynote Speaker this year is





April 25-27 -  
CSI West by Northwest Bi-Region  
Conference

## Upcoming Events

**Adèle Naudé Santos**, FAIA, ARCUK, an architect and planner whose career combines professional practice, research and teaching. Adele joins us fresh from her journeys to China where she is working on urban planning, a competition for a new library and projects in construction. In addition to her practice, she is a professor and former Dean of Architecture and Planning at MIT. For the last five years, she has run an international symposium called "Housing +", gaining insights and principles which we can take forward in our quest to provide housing that people can live with.

[Find Out More!](#)

## President's Message

# Learning to Snowboard

**Ali LaManna, CSI CDT, Emerick Construction - President Portland Chapter CSI**

This last week I was in Colorado visiting family, and I took the opportunity to learn how to snowboard. I have never skied or snowboarded in my life. I have never surfed or skateboarded, so snowboarding was a completely new experience, and I am happy to say I have no broken bones. At first I was petrified going quickly down a frozen slope (to be honest, I still am a little scared), but as I learned the fundamentals and practiced the basics of turning and stopping, I can't wait until I can try again. After going through that experience, it made me reflect on my job and what I am learning as I continue to grow in this industry. I am almost 8 years into my career. It seems like a lot, but it is only a drop in the bucket compared to some of the experienced colleagues around me. I have to remember as I come up against challenges that I'm not sliding down that hill alone. Groups like CSI are helping me with those fundamental skills through classes and lectures, and it is also introducing me to those mentors and advisers that just like my boarding instructor, can help me navigate new territory.



I'm sorry if this is a little cheesy, but as I am grappling with some challenging projects, it is good to remember that we are all continuing to learn as we move through our careers, and we won't be perfect on our first run down the hill. We have to have patience and be able to rely on our support systems to keep improving.

## Learning and Libations



## Vegetated, Not Green

Jenn Thomas, Senior VDC Manager at VIA Technik - Education Co-Chair

On February 28th, John Herrmann and Jon Crumrine of Bain Associates spoke to the group about vegetated roofs in Portland and the 2035 Comprehensive Plan for Portland. They made sure to clarify that the roofs are not typically green year-around. So they refrain from referring to them as "green" roofs. They can be various colors through out the year from crimson to amber to auburn. They also mentioned that they do not typically call them "eco-roofs" either since Portland seems to be the only area in the nation that refers to them as such. The industry standard is "vegetated roof".

There are three kinds of vegetated roofs: Extensive, Lawn, and Intensive. When deciding which one to use, consider what purpose you want your vegetated roof to serve. One of the benefits of a vegetated roof is that plants help combat greenhouse gases. The vegetated roof also helps combat urban heat islands, which are known contributors to air pollution and heat-related illness. As far as technical benefits are concerned, vegetated roofs have a proven ability to store water as well as reduce/delay stormwater runoff. They also lower energy costs by adding insulation. They improve sound insulation and improve the efficiency of solar panel installations. John and Jon also highly recommend using a protected membrane roof. It protects the membrane from UV rays, oxidation, thermal cycling, and maintenance traffic. They also discussed considering engineered growing media because it is 30-50% lighter than regular soil and has less chance of clogging the drainage system.

So let's briefly discuss the 2035 Long Range Development Plan. It passed Portland City Council this July of 2018. New buildings over 20,000 SF in the central, east, and west side of Portland will be required to have vegetative cover. The roof must be at least 60% planted. Storm water management was the key driver for this policy.

Finally, how does this affect specs? Think of vegetated roofs as "vegetatively enhanced" PMRs. Hardgoods are in Division 070870 and 070413. Plants and irrigation are in Division 32. Refer to section 076616 for roof decking pavers. Also be sure that all sections clearly point to each other.

Happy planting!



### Next Event March 19th Roof Preservation

Keith Schwarting will discuss extending the service life of an existing roof through restoration. We will explore the various options and materials available and identify which types of roofing systems are best candidates for roof restoration.

## What's Happening at the Industry Forum?



### 5x10's

Five ten-minute (hence “5 x 10”) presentations by students and professionals on innovation and exciting creative participation in the building design and construction industry.

The line-up starts with Kagan Reardon, Portland State University, who will speak to Architecture Parlante as Suicide Intervention. He is followed by Julia Mollner, Rebecca Taylor, Lauren Fitzpatrick from the Center of Public Interest Design, who have an awesome idea on how to re-purposed construction mock-ups. Kelsey Moody, from The Joinery will share how this fabulous Portland furniture maker realizes Modern Design with Timeless Techniques. Emily Ryba from the University of Oregon will address a proposal for Refugee Housing in Portland and Mark Desbrow from Greenlight Development will close this portion of our event with Development Concepts with High Density and Strong Design.

Come hear about innovated ideas being fostered in our own community!

### Guest Registration – choose one of three options:

1. Individual **REGISTRATION** is just \$25.
2. Emerging Professionals use Promo Code EP2019 to **REGISTER** for Free!
3. As a **Guest** of a favorite Sponsor Exhibitor. Contact your favorite sponsor and tell them you'd like to attend as their guest!

#### Current 2019 Sponsor Exhibitors

Advanced Architectural Products	Tom	Brosnan	Gold Sponsor
Bain Associates, Inc	Owen	Elkins	Gold Sponsor
Bemo USA	Graydon	Cox	Silver Sponsor
<b>BORAL: Cultured Stone &amp; Eldorado Stone</b>	Maddie	Carde/Matt Wilson	Silver Sponsor
Carleton Hart Architecture	Corey	Morris	Silver Sponsor
<b>CERACLAD Fiber Cement Rainscreen Cladding</b>	Stan	Rochlin	Silver Sponsor
CPI Daylighting	Rafael	Rivero	Gold Sponsor
<b>DeaMor Associates</b>	Jody	Moore	Platinum Sponsor
Dorken	Tony	Camp	Gold Sponsor
Fortifiber	Frank	Mendez	Silver Sponsor
Georgia-Pacific Gypsum	Tim	Millsaps	Silver Sponsor
Guardian Glass	Bryce	Given	Gold Sponsor
<b>Hoover Treated Wood Products</b>	Frank	Stewart	Silver Sponsor
<b>Ideate+IMAGiNiT</b>	Tony	DiVincenzo	Platinum Sponsor
Interior Technology	Dan	Quatier	Event Sponsor
IWP	Bob	Berwick	Gold Sponsor
<b>M.Thrailkill,Architect LLC</b>	Michael	Thrailkill	Silver Sponsor
Neolith	Peter	Wagna-Blank	Gold Sponsor
<b>Parklex USA</b>	Todd	Ketcham	Gold Sponsor
PPG Paints	Susan	Williams	Gold Sponsor
<b>PPI Group, a Topcon Solutions Store</b>	Wendy	Finch	Platinum Sponsor
<b>PRECISION IMAGES</b>	Erica	Bitterman-Ryon	Gold Sponsor
<b>Rodda Paint / Cloverdale Paint</b>	Jeff	McIntyre	Silver Sponsor
<b>HDG/Thermory - Shaw Designer Resources</b>	John	Shaw	Silver Sponsor
<b>Lacey Glass/Ceraclad - Shaw Designer Resources</b>	John	Shaw	Silver Sponsor
<b>Skyco/Mermet - Shaw Designer Resources</b>	John	Shaw	Silver Sponsor
Sherwin-Williams	Anna	Atchison	Silver Sponsor
<b>Tate Access Floors, Inc.</b>	Evan	Owens	Silver Sponsor
<b>Todd Construction</b>	Vicki	Menard	Platinum Sponsor
<b>Tremco Roofing and Building Maintenance</b>	Desiree	Huff	Silver Sponsor
<b>TREX</b>	Taylor	Levin	Silver Sponsor
<b>VaproShield</b>	Nicole	Anderson	Silver Sponsor
<b>Window Tech Inc.</b>	Bud	Henson	Gold Sponsor
<b>Woodwork Institute</b>	Jack	Livingston	Silver Sponsor





## Networking and Education!

### 2019 Door Prizes – Don't miss your opportunity to take one home!

Thanks to our generous sponsors, we are offering three chances to take home a valuable reminder of your participation in this year's Industry Forum. Simply **"Collect 8"** initialed logos (or more) on the back of your Program from our Sponsors by visiting their table and making a connection! Those participating in **Speed Education** must collect 6 stamped logos + 2 (or more) initialed logos after visiting additional Sponsors' tables. Enter your completed "Collect 8" cards by returning to the Registration table for a chance to be selected just prior to the Keynote Address.



*DeWALT Power 5-Tool Combo Kit*



*iPad Wi-Fi 128 GB*



*YETI Tundra 65 Cooler Set*

It's not too early to think about golfing this summer!

## Fore!

The Annual CSI Golf Tournament is returning this summer!

**August 22nd at Lewis River Golf Course**



Registration for teams and sponsorship are now open! March sure to register soon! Spaces fill up fast!

[More Information](#)



## Member News



### Calling Future Leaders!

Portland CSI is looking for our next leaders! Are you interested in helping to shape our chapter? We are looking for 3 new board directors for the the term starting in July.

Board Directors must attend the monthly board meetings to vote on board business, and help oversee the committees. The term is for 2 years from July 2019 to June 2021.

If you are interested or would like more information, please contact us! Nominations will close April 10th.

[Contact Us](#)

## New, Emeritus, and Renewed Members November 2018

**Lee Kilbourn, FCSI, CCS, FAIA, Membership Co-Chair**

### NEW MEMBERS

Louis Barnett, CSI; York Manufacturing

Jeremy Tunney, CSI; Class A Roofing Consultants

### MEMBERS EMERITUS (November Anniversary Date)

Donald Eggleston, CSI; SERA Architects, PC; member since 1970

Richard Gira, CSI, CDT; member since 1978

### RENEWING MEMBERS

Sulaiman Banwal, CSI-EP; Hilti Inc.; member since 2016

Erica Bitterman-Ryon, CSI; Precision Images; member since 2000

Michelle Cartwright, CSI; Artek, Inc.; member since 2013

Bill Coady, CSI, CCPR; Retired from Guardian Glass; member since 1994

David Grigsby, CSI; ZGF Architects LLP; member since 2012

Amy Hjelte, CSI, CCS; LRS Architects, Inc.; member since 2002

John Lamb, CSI; Structural Waterproofing Consultants, LLC; member since 1983

Michael Lemen, CSI, CDT; Metl-Span; member since 2015

Alan Loftesness, CSI; A-Tech/Northwest, Inc.; member since 1979

Mike Manzi, RA, CSI, CDT, LEED AP; Bora Architects; member since 2010

Steven McBride, CSI, RCI; Professional Roof Consultants, Inc; member since 2002

Halliday Meisburger, CSI, CDT, AIA; ZGF Architects; member since 2013

Corey Morris, CSI, CDT, NCARB; Carleton Hart Architecture; member since 1998

Mo Paz, CSI; Peikko - USA; member since 2017

Richard Rapp, CSI, CDT, AIA, NCARB; TVA Architects Inc.; member since 2016

## Region News

### West by Northwest Bi-Region Conference in Downtown LA

**Where:** Sheraton Grand Los Angeles

**When:** April 25-27, 2019  
**(Early Bird Pricing Ends March 25th!)**

**Who:** Network the whole weekend with design & construction professionals from all over the west coast, from Hawaii to Alaska to Montana and Nevada. Meet the architects, specifications writers, designers, facilities construction teams & engineers who specify construction products.

**What:** Hear exciting Keynote and Technical Speakers. Listen to educational sessions on high level technical topics & the transformation of DTLA. Work with a team on "Let's Fix Construction." Attend leadership education & trusted advisor training.

**[For more information about events and lodging, visit the LACSI website.](#)**





VOLUME 60 | ISSUE 4 | APRIL 2019

## In the Spotlight!

### In This Issue

Walk on the Wild Side

President's Message

What Happened at Industry Forum

Terry Kastner Discusses Plaster and Stucco Systems

Fore!

Board Elections

Region News

Other Industry Events

### Upcoming Events

**April 9 -**  
Chapter Meeting: Walk on the Wild Side - the Final 3 Bond Projects at the Oregon Zoo

**April 10 -**  
Board Election Ballots to Membership

**April 18 -**

## Walk on the Wild Side

with Portland CSI & the Oregon Zoo

**Kourtney Strong, CSI, CDT - LSW Architects - Programs Chair, Portland Chapter CSI**

The **Oregon Zoo** is on its final phase of the bond projects. Join Portland CSI and Lease Crutcher Lewis at **Conservation Hall** on **April 9th** from 5:30pm to 8:00pm.

### [Find Out More!](#)

This event is being held in conjunction with the [Portland Design Week](#) events, and will be a great opportunity for our membership to meet other members of the Portland design community. And vice versa. CSI looks forward to putting our best foot forward for this opportunity to share our passions with the greater Portland design community.

Since a picture is worth a thousand words, see the images below. The final phase of construction consists of the Polar Passage, Primate Forest, and Rhino Habitat. Looking forward to seeing you all there!





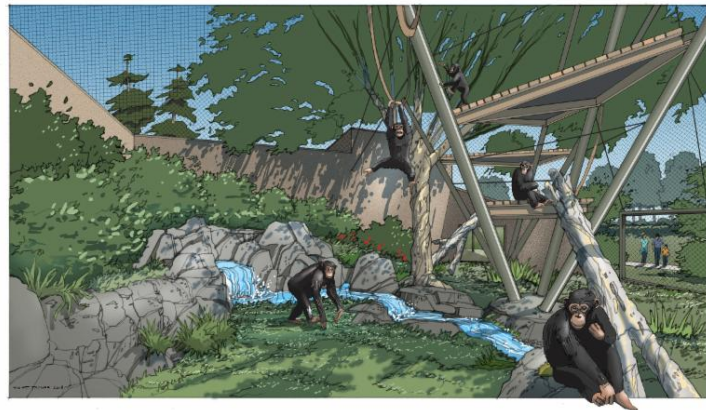
**April 26 -**  
Board Election Ballots Due

**April 25-27 -**  
CSI West by Northwest Bi-Region Conference

**May 14 -**  
Chapter Meeting: Trivia Event  
More information to come!

**May 22 -**  
Learning and Libations: Quality Assurance in Specifications and Practice

### Upcoming Events



## President's Message

### Spring Cleaning

**Ali LaManna, CSI CDT - Emerick Construction - President Portland Chapter CSI**

*"It's spring fever. That is what the name of it is. And when you've got it, you want — oh, you don't quite know what it is you do want, but it just fairly makes your heart ache, you want it so!" - Mark Twain*

Welcome Spring! I am so happy to be back to days longer than nights, seeing cherry trees blossom and leaves bud. This is the time of year most people start their spring cleaning, and I am one of them. Recently Jake and I jumped on the Marie Kondo bandwagon, and started going through some things at home. We've made it through the clothes (I "thanked" 5 bags worth) and have started in on our books. With both of us being former architecture students, we have a lot of books at home. It was fun going back through some of the course books that I have not looked at in nearly 10 years. It was also comforting to thank some of those books for their service and pass them on to a new home elsewhere, likely facilitated by Powell's City of Books.



Wouldn't it be nice if we had, no, made the time and found the energy to bring the KonMari method to our specifications and construction documents? I can't even imagine the number of times specs have been copied and pasted from one project to the next. This is done in the name of efficiency because we assume there is no time to rethink whether the spec section even makes sense anymore. If I was the supreme leader of the world, first I'd ban slow drivers from the passing lane, and suspend the driving privileges for any transgressions. Next, I would



make sure each project had a month dedicated to reviewing all the decisions made, making sure they are constructible and clear, concise, correct, and complete-ly communicated in the documents before construction started. Imagine the cost, time, and paperwork saved! But alas, I have not been chosen as the supreme leader of the world.

Perhaps, just maybe, we could take advantage of the spring cleaning spirit and just pick one spec section on our next project to take a little extra time to dive deep into the specifications or details. Create the opportunity to ensure that specification is communicating what we think it should be communicating. Nothing more, nothing less. And if there are items that are incorrect or superfluous, thank them for their service, and remove them from the spec.

It might not seem like a lot, but even an organized sock drawer can make a big difference in your day. Just imagine what a more organized spec can do for your contractors and owners.

## Portland Chapter CSI 2019 Industry Forum – The Party Continues!



### Randy Page NCARB, LEED AP - Portland Chapter CSI Board, Industry Forum Co-Chair

The party continues as the **2019 Industry Forum** has shown itself to be a premier event in the Portland construction and design community. Thanks to AIA Portland, our thirty-five Exhibit sponsors, 3 door prize sponsors, and our local design community, we were host to over 200 guests and nearly 60 sponsor representatives.

For an update on what you may have missed, including photos, see a full recap of the **2019 Industry Forum** by [clicking on the logo below](#).



## Learning and Libations



## Terry Kastner discusses Plaster and Stucco Systems - April 18th at 5:30 pm

Jenn Thomas - Senior VDC Manager at VIATechnik - Education Co-Chair

Join Terry with the Northwest Wall and Ceiling Bureau for a presentation on the four main players responsible for Plaster and Stucco installations: The Owner, Architect, General Contractor, and Specialty Contractor! A tour of the training lab will follow the presentation!

[More Information](#)

**It's not too early to think about golfing this summer!**

### Fore!

Erica Bitterman-Ryon, CSI - Senior Sales Executive, Precision Images - Golf Co-Chair

The Annual CSI Golf Tournament is returning this summer!

**August 22nd at Lewis River Golf Course**

Registration for teams and sponsorship are now open! March sure to register soon! Spaces fill up fast!



[More Information](#)

### Member News

## 2019 BOARD ELECTIONS

Portland CSI is officially announcing the voting for your 2019-2021 elected board. Three Board of Directors positions are up for grabs this year. We received nominations for these positions this past winter, and an email will be sent to all members for voting in the latter half of April.

Just a reminder, that Board Directors must attend the monthly board meetings to vote on board business, and help oversee the committees. The term is for 2 years from July 2019 to June 2021.

If you are interested or would like more information,



please contact us! Nominations will close April 10th.

[Contact Us](#)

## Region News

### West by Northwest Bi-Region Conference in Downtown LA

**Where:** Sheraton Grand Los Angeles

**When:** April 25-27, 2019

**Who:** Network the whole weekend with design & construction professionals from all over the west coast, from Hawaii to Alaska to Montana and Nevada. Meet the architects, specifications writers, designers, facilities construction teams & engineers who specify construction products.

**What:** Hear exciting Keynote and Technical Speakers. Listen to educational sessions on high level technical topics & the transformation of DTLA. Work with a team on "Let's Fix Construction." Attend leadership education & trusted advisor training.

[For more information about events and lodging, visit the LACSI website.](#)



## Other Industry Events



This year Canstruction is very excited to celebrate the 23rd annual Canstruction Design, Build, Feed Competition. The





event will be held in September 2019 to coincide with Oregon Food Bank's Hunger Awareness Month.

For an overview of the competition, sponsorship opportunities, and volunteer needs, the CAN-OPENER will be **Thursday, April 25th from 5:30pm to 7:00pm** at David Evans and Associates, Inc. (2100 SW River Parkway). Light snacks and drinks will be provided.

Deadline to Sign Up: **May 17th, 2019**

For more information, click on the canstruction banner above.



## Upcoming IMI (International Masonry Institute) Events



State-of-the-Art

### MASONRY CLEANING WORKSHOP



**Date:** Friday, May 3, 2019

**Location:** Portland, Oregon

**Venue:** University of Oregon – White Stag Building

One-day intensive workshop, including:

- Cleaning Philosophies
- Masonry Materials and Geology
- Types of Soiling
- Cleaning Techniques Overview
- Cleaning Methodology
- Hands-on Demonstrations of Various Cleaning Techniques
- Reference Materials
- Plus, Networking Cocktail Reception with the Speakers and Demonstrators

For more information contact [administration@apti.org](mailto:administration@apti.org)

Workshop  
Partners:





# URM

**SAVE THE DATE!**

JULY 18 - 20, 2019

PORTLAND, OR

## SEISMIC RESILIENCE SYMPOSIUM

### Three-Day Symposium will include:

- Earthquake Background
- URM Construction and Seismic Engineering Technology Options
- Building Codes and Historic Preservation Requirements
- Seismic Upgrade Project Considerations and Costs
- Public Policy, Finance, and Resiliency
- Seismic Upgrade Project Awards and Cocktail Reception
- Walking Tour of URM Seismic Upgrade Buildings Downtown Portland
- Exhibit Booths and Sponsorship Opportunities

### Partnering Organizations:



AIA  
Oregon



Registration, Sponsorship & Speakers TBA at [aia-oregon.org/URM](http://aia-oregon.org/URM)

---

## AIA Shift 19 Conference

# shift 19

D E S I G N  
E N E R G Y   C I T I E S  
R O B O T I C S  
A R T I F I C I A L  
I N T E L L I G E N C E  
D I V E R S I T Y  
F A M I L I E S  
N A T U R A L  
R E S O U R C E S  
R E S I L I E N C Y  
T R A N S P O R T A T I O N  
M A T E R I A L S  
D I S E A S E  
H O U S I N G   E Q U I T Y  
H U N G E R   A G I N G  
V I R T U A L   R E A L I T Y  
C O M M U N I C A T I O N  
E D U C A T I O N  
A U G M E N T E D  
R E A L I T Y  
C O M M U N I T Y  
S O C I A L  
R E S P O N S I B I L T Y  
U N I V E R S A L  
D E S I G N  
A R C H I T E C T U R E  
E N V I R O N M E N T  
C L I M A T E   C H A N G E  
S H I F T 1 9

**YOU** are the  
**agent** of  
**change**

think  
**LOUDER**

## OREGON DESIGN CONFERENCE



**AIA**  
Oregon

APRIL 17-19 2019  
SALISHAN RESORT  
GLENEDEN BEACH  
AIAOREGON.ORG

PORTLAND CSI | [[www.portlandcsi.org](http://www.portlandcsi.org)]





# The PREDICATOR

newsletter

VOLUME 60 | ISSUE 5 | June 2019

## In the Spotlight!

### In This Issue

2019 Chili Cook-off

President's Message

Beat the Heat with CSI Portland  
Programs this Summer!

Learning & Libations  
TOUR  
April Recap

Golf Tournament 2019

CDT Prep - Fall 2019

Industry Forum 2020

The Predicator  
Contributors Wanted

Member News

Historical News

Industry News

Allied Associations Events

### Upcoming Events

## 2019 Chili Cook-off & Portland CSI Member Appreciation



**Kourtney Strong, AIA, CSI, CDT - LSW Architects -  
Programs Chair**

June 11th, 2019

5:30pm

Lucky Lab on NW Quimby

**Register!**

It's that time of year yet again. Dust off your award winning chili recipe and join us for a night of good chili, fine company, and a celebration of those who have donated their time and effort to make CSI Portland's last year of events exceptional, and possible.

This will be a fun evening of networking, chapter awards, some chili smack talk and a little cold beer at Lucky Lab on NW Quimby. Please join us or even better register a team.

Awards for chili include Best Chili, Best Theme, and People's Choice.

Awards for our volunteer leaders and members will be selected and delivered by our President Ali LaManna. Come on out and celebrate the efforts of our volunteers and delicious chili!



**June 4 - 5:30pm**

Healthy Product Selection Using  
Transparency Data  
Bora Architects  
720 SW Washington St #800,  
Portland, OR 97205

**June 11 - 5:30pm**

2019 Chili Cook-Off  
Lucky Lab on NW Quimby

**June 19 - 3:00pm**

Learning & Libations Tour of  
Marshall Elementary and  
McLoughlin Middle Schools

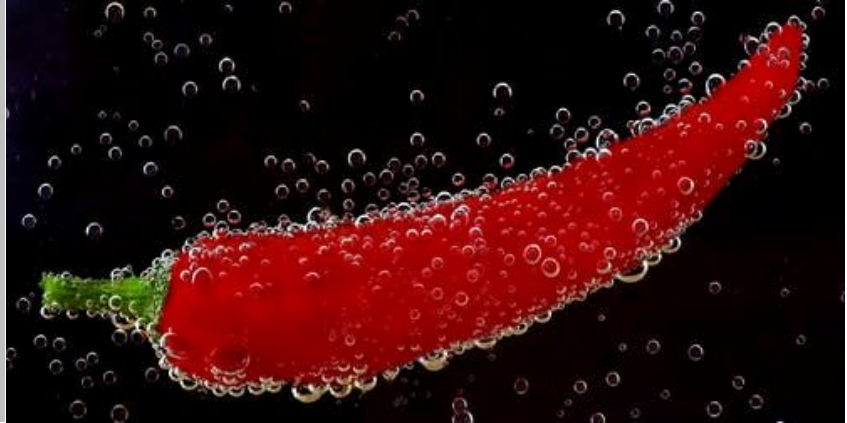
**June 27 -**

2019 Board Retreat and July  
Board Meeting

**July 9 - 5:30pm**

Vancouver Waterfront Walking  
Tour

**Upcoming Events**



**President's Message**

**Summer Time**

**Ali LaManna, CDT - Emerick Construction - President Portland Chapter CSI**

We are heading in to summer, which means the end of our fiscal year. It has been wonderful year for Portland CSI with a lot of great events, some new changes, and new ideas for next year. Here are a few of my favorite highlights. We started offering the CDT prep course for both the fall and spring exam. The presentation on Useful Waste we had in January has been accepted as a presentation this October at CONSTRUCT in Maryland. Our Emerging Professionals' Ugly Sweater Party hit a new record with over 100 people and eight different organizations. And I got to show off one of my projects for Clackamas Fire during a tour of Station 16 last August. I can't wait to see where we go next year!



I want to thank all of the hard working volunteers that make this chapter happen. I could not imagine a harder working or more dedicated group who give up their free time to organize the events, track down speakers, put this newsletter together, and make the Portland CSI experience what it is. I will be awarding some of these volunteers on Tuesday at the Chili Cook-off, but we would not be able to do what we do without each and every volunteer from our



check-in people at the registration table to the chapter board itself. Thank you all for your continued dedication and hard work.

Our annual board retreat will be happening at the end of June to plan for the next fiscal year. If any of our members have ideas on how we can make your experience better, please don't hesitate to let us know at [office@portlandcsi.org](mailto:office@portlandcsi.org). If you are interested in volunteering, please check out our [volunteer page](#), or shoot us an email. You can join one of our already established committees or if you have a new idea you want to try, we are more than happy to support you.

## Beat the Heat with CSI Portland this Summer!



### **Kourtney Strong CDT - LSW Architects - Programs Chair, Portland Chapter of CSI**

Welcome to our Summer line up of Programs!

#### **June 11th - 7th Annual Chili Cook-off**

This will be a fun evening of networking, chapter awards, some chili smack talk and a little cold beer at the Lucky Lab on NW Quimby. Please join us, or even better, register a team. Awards will include Best Chili, Best Theme, and People's Choice. Come try the chili and help pick the winner!

#### **July 9th - Vancouver Waterfront Walking Tour**

Have you been to Vancouver lately? The Vancouver Waterfront development has been open for almost a year now and is getting better every day! Join us for a walking tour to learn more about the masterplan, the first phase of construction that is completed and the future of the neighborhood!

#### **August 22nd - Annual Golf Tournament**

Come out for even more fun in the sun with our annual golf tournament at the beautiful Lewis River Golf Course and support the future leaders in our AEC industry! The Annual CSI Golf Tournament is a fund raising event for our certification scholarships. Scholarships are given out for those that want to further their education in the AEC industry by taking the CDT Exam or next level CSI exams.

Check out our [Current Events](#) on our website!

## Learning & Libations



# LEARNING & LIBATIONS **SERIES**

## TOUR

### Marshall Elementary & McLoughlin Middle Schools



**June 19th, 2019**

**Tour at 3:00pm**

Skanska Trailer

5802 MacArthur Blvd

Vancouver, WA 98661

Learn about the complexity of joining CLT with Tilt Up Concrete Panels as well as the coordination involved with properly locating the MEP systems.

Libations at 4:30pm (its 5 o'clock somewhere).

See the [website](#) for more information and access to [registration](#).

---

## April Recap:

# Myths of Stucco Failures & Pre-Con Solutions

Mark Aasland - PACE Engineers Inc - Jenn Thomas - VIA Technik LLC - Education Co-Chairs

On April 18th we had a presentation by Terry Kastner, the executive director of the Northwest Ceiling & Wall Bureau at the Cement Masons Local Union #555 building. Terry discussed with us the Myth: Stucco Cracks. Stucco really doesn't crack, but when it does, why did it? What follows are the cliff notes of that event, for those members unable to attend.

Prior to the installation of the plaster cement, a Pre-Con should be held. The attendees at the Pre-Con should be the general contractor, architect, owners representative and the plaster contractor. During the Pre-Con the critical issues that should be discussed are environmental conditions, WRB & flashings, stucco cracking and appearance.

The environmental conditions revolve around different approaches for cold weather conditions and warm weather conditions. For cold weather conditions, cement plaster should not be applied when the ambient temperature is less than 35 degrees Fahrenheit. Do not apply cement plaster to any frozen surfaces. Also, tenting, heat and ventilation must be provided if cement plastering is done during temperatures below 35 degrees Fahrenheit. In warm weather, the basecoats and finish coat need to be protected from uneven and excessive evaporation.

The choice of panels and orientation to framing members is important. Wood sheathing may be plywood, oriented strand board (OSB), or composites (Com-ply). It is recommended that all wood products have a moisture content of less than 19% before, during and after installation. Panels shall be installed with a minimum 1/8-inch gap around all edges and ends. Blocking is recommended at horizontal joints.

There are two joint types used with the installation of cement plaster. A control joint is a joint that accommodates movement of plaster shrinkage and curing along predetermined, usually straight lines. An expansion joint is a joint that accommodates movement beyond plaster shrinkage and curing. Prior to starting lathing or plastering work, carefully inspect installed work of other trades to verify that work is complete to the point where work may commence. The contractor should not begin installation until all unsatisfactory conditions are resolved.

The skill of the plasterer, weather conditions, time allowed to work, substrate quality and available materials all play a part in the quality of the finished appearance. Prior to the presentation several of the apprentices were at work and demonstrating their trade. A few of our members decided to roll up their sleeves and try their hand and doing a plaster cast. Photos have been withheld at our members request. That is until they forget that we have them.

If you would like additional information regarding this topic, please contact Terry Kastner the Executive Director of the Northwest Wall & Ceiling Bureau (NWCB) at [terry@nwcb.org](mailto:terry@nwcb.org) or visit the NWCB website at [www.nwcb.org](http://www.nwcb.org).

**Golf Committee ---- FOUR !!!!**

## Come Out Swinging!





## Mark Aasland - PACE Engineers - Golf Co-Chair

The Annual CSI Golf Tournament will be held on August 22nd at Lewis River Golf Course in Woodland, WA. The golf course is tucked between the North Fork of the Lewis River and the foothills of the Cascade Mountains. Registration opens at 10:00 am with golf starting at 12:00 pm followed by dinner and awards.

Come enjoy good times with friends and colleagues while having fun on the golf course. The tournament proceeds fund our seasonal certification scholarships. Scholarships are given out for those that want to further their education in the AEC industry by taking the CDT Exam. We also offer support for taking your knowledge to the next level with [CCCA, CCS, and CCPR exams](#). Your sponsorship and participation in this event allows us to help CSI members in the AEC Industry, including those emerging professionals that someday may be working with us (or over us) in this wild and crazy industry.

Please help make this event a success and participate in the golf tournament. There are still [sponsorship opportunities](#) available for all budgets, even if you are not a golfer in any way, shape or form. FIND YOUR GOLF MOJO or HAVING FUN IN THE SUN MOJO and join us!

Registration is open on the [Golf](#) page of the website.

## Construction Documents Technologist (CDT) Prep Course - FALL 2019



Just a heads up that the Portland Chapter is working toward offering up the CDT Education Series again in 2019 for the Exam period. Details like place, dates and times still need to be worked out and details will be coming soon. If you are interested, you can plan on 10 weeks of classes, one weeknight a week for 2 hours each class. The classes will begin the first week of August and proceed to the 2<sup>nd</sup> week of October. We hope to have full information in the July newsletter. If you have a centrally located office with tech capabilities and you would like to host our fall class series, please let me know. Ideally, it would be awesome if we could find a host that has the ability for people outside of our area to dial and/or video conference in to the class although that is not an absolute "must" requirement. Class cost will be \$150 for CSI Members and \$250 for Non-Members through Portland CSI.

For full information on the CDT, exam costs, exam period and study materials, please go the Institution website here: <https://www.csiresources.org/certification/cdt>

More info to come!!

## Industry Forum

The **2020 Industry Forum** Planning Committee is currently forming - and we need your help! We have a lot to do in preparing for next year's Industry Forum and extend an open invitation to any Portland CSI member wanting to get involved! There are plenty of opportunities for those who enjoy planning a party or promoting an essential design-community event.

A major contributor to our efforts will be stepping away from the committee this year. **Corey Morris**, Senior Associate with Carleton Hart Architecture, has been a cornerstone in supporting the evolution of our growing presence in the design community. The entire Chapter is most grateful for the years Corey has provided essential web-based design services and inspiration in developing tools needed to connect with our fellow members and associates. His involvement will be missed!

**Members who would consider getting involved are encouraged to review some of the support activities to be performed in coordination with our current volunteers:**

A **Marketing Manager/Publicity Leader**, someone with experience in marketing and branding.

- to develop messaging and graphics, working with our current **Graphic Designer** as communicated with the Keynote Speaker and the rest of the Planning Committee.
- Overall schedule management
- Posting *2020 Industry Forum* updates to the Portland CSI website and The Predicator
- Creating and posting social media content

A **Registration Manager** coordinating web-based event and sponsor registrations, including the "shopping cart" parts of Constant Contact used by Sponsors (i.e. turning off sponsorship options as they sell out)

A **Sponsor Liaison** coordinating sponsor-related issues with the **Registration Manager**, including updating sponsor contact list, marketing past and potential sponsors, explaining sponsorship options, and providing sponsor event "packages" and requested invoices.

For those interested in what we do and what opportunities are available, please contact Randy Page at this email address: [pagernd@gmail.com](mailto:pagernd@gmail.com). Our next meeting is at noon on Monday, June 10th.

## Member News

# New, Renewed, & Emeritus Members Portland Chapter December 2018, January 2019, February 2019

Lee Kilbourn, FCSI, CCS, FAIA

### **BRAND NEW MEMBERS**

Pip Allen, CSI (Note 2)  
Tamara Allen, CSI-EP; Wind Northwest  
Mary Browne, CSI-EP; PAE Engineers (Note 1)  
Jim Carroll, CSI; Altera Windows & Doors  
Kyungkook Cho, CSI; Otak  
Juan Coronel, CSI-EP; Materials Testing & Inspection  
Daniel Crates, CSI; Georgia-Pacific (Note 1)  
Amy Griffin, CSI; Benjamin Moore (Note 1)  
Spiral Horn, CSI-EP; Pacific Mat (Note 1)  
Scot Jahn, CSI; Clark/Kjos Architects LLC (Note 1)  
Jennifer Kennedy, CSI-EP; Rodda Paint Company (Note 1)  
Minwoo Lee, CSI; Otak (Note 1)

Roby Peters, CSI-EP; PACE Engineers (Note 1)

Kate Piper, CSI

Emily Ricker, CSI; Forensic Analytical Consulting Services

Maxwell Roach, CSI; Metal-Era

Miel Michelle Steele, CSI-EP (Note 2)

#### **CURRENT CSI MEMBERS NEW TO PORTLAND CHAPTER**

Chelsea Cassady, BS, CSI-EP; PAE Engineers; member since 2018 (Note 1)

Mike Ericson, CSI; Dal-Tile; member since 2018

Todd Johnson, CSI; Facades Northwest; member since 2017

#### **RENEWED MEMBERS**

Summer Amauba, CSI-EP; Panel Guys; member since 2016 (Note 1)

David Aronson, CSI; Kramer Gehlen; member since 2018 (Note 1)

Kean Bacus, CSI, AHC; Dorma Kaba USA; member since 2013

Christopher Bennett, CSI, CDT, AIA; Bennett Construction Consultancy, LLC; member since 2014

Heidi Bertman, CSI, AIA, LEED AP, M. Arch, NCARB; member since 2014 (Note 2)

Jason Chupp, CSI; Swinerton Builders; member since 2013

Colin Doherty, CSI, CCS; Port of Portland; member since 2009

Devin Follingstad, CSI, CCCA, AIA; Carleton Hart Architecture; member since 2007

Devin Graham, BA, CSI-EP, CDT, LEED GA; Oh Planning+Design; member since 2016

Joshua Guerra, RA, CSI, CDT; OTAK, Inc.; member since 2016

Nick Haluschak, PE, CSI, ASCE; Retired; member since 1988

Russell Harrison, CSI, CDT; Window Tech Inc.; member since 2014 (Note 1)

Stephen Hubbard, CSI; Mutual Materials Company; member since 1993

Clarke Jewell, CSI, CDT; Olympian Precast, Inc.; member since 1999

Bassam Khalifeh, CSI; Washington County - Facilities; member since 1989

J. Knott, CSI; Retired Member; member since 1983 (Note 2)

John Kouba, CSI; Malarkey Roofing Products; member since 2001

Alicia 'Ali' LaManna; Emerick Construction; member since 2012

Edward Macsisak, CSI; Spacesaver Specialists, Inc.; member since 2005

Scott Martin, CSI, CDT, LEED GA; Tremco Commercial Sealants & Waterproofing; member since 1995

Jeff McIntyre, CSI, CDT; Rodda / Cloverdale Paint Company; member since 2006

Joseph Mecalís, BA, CSI, CDT; Myhre Group Architects; member since 2007

Mark Miller, CSI-EP; Skoler Building Resources; member since 2012

Mike Murphy, CSI, CCPR; Behr Process Corp.; member since 2006

Ron Ogden, CSI; R. J. Ogden Associates, Inc.; member since 1986

Nick Rogers, CSI; Barclay Dean Architectural Products; member since 2018

Mark Schneider, CSI; CSAF LLC; member since 1997

Robert Sharman, MBA, CSI, CDT; Rowe Fenestration, Inc.; member since 2008

Sandra Slavik, CSI; DCI Hollow Metal; member since 2018 (Note 1)

David Stephenson, CSI, AIA, LEED AP; SERA Architects; member since 2007

Kourtney Strong, CSI, CDT®, AIA, NCARB; LSW Architects; member since 2014

Walt Suman, CSI, CDT; TekTerio Systems; member since 1985

Robert Temple, CSI; Hafele America Co.; member since 2018

Jennifer Thomas, CSI; VIA Technik LLC; member since 2017 (Note 3)

Elizabeth Van Rossen, CSI-EP; Swinerton Builders; member since 2017 (Note 1)

Christopher Veit, CSI, CCS; Carlson/Veit Architects, P.C.; member since 1983

Susan A. Williams, CSI; PPG Paints; member since 2017

Katie Windsor, CSI, CDT; GBD Architects; member since 2013

Amy Woods, CSI; International Masonry Institute; member since 2017

Wendi Ziegler, CSI; Inpro; member since 2015

#### **MEMBERS EMERITUS WITH DECEMBER, JANUARY AND FEBRUARY ANNIVERSARY DATES**

D.R. 'Skip' Brown III, CSI, CCS, AIA; member since 1989

John Brockamp, CSI; member since 1982

Robert Easton, CSI, CDT; member since 1992

Les Seeley, CSI; member since 1977

Isaac Tevet, CSI, AIA; member since 1989

Kenneth Nelson, CSI, CDT; member since 1971

#### **NOTES (Members with no Company listed in Institute Record)**

1. Company name derived from email address.
2. No company name available.



## Historical News\*

\*the oxymoronic nature of this statement is not lost on the editors of The Predicator. However, the editors think it is funny. Hence, it remains.

### 60th Anniversary Call to Arms



#### Ellen Onstad, CSI - Interface Engineering, Inc. - Immediate Past-President

Portland Chapter CSI will be celebrating our 60<sup>th</sup> anniversary this coming 2019 to 2020 fiscal year – the board has been doing some digging into old issues of The Predicator and here is what we found!

- October 1979 – Portland Chapter CSI to celebrate 20<sup>th</sup> anniversary
- The Portland Chapter of the Construction Specifications Institute will celebrate its 20<sup>th</sup> anniversary as a chapter chartered by the National Institute.
- The membership is planning a gala party on the evening of December 7<sup>th</sup> at the Portland Airport Sheraton hotel. All members, guests, and those interested in the construction industry are invited to attend. The evening will be set aside for reminiscing and fun, attitude adjustment period will be at 5:30, dinner at 7:00, with an entertaining program scheduled after dinner.
- Bob Klas, past president of the Portland chapter is chairman of the event. Bob is soliciting any memorabilia people have to lend - old newsletters, slides, or photographs of old chapter or region conferences. He urges all regional soothsayers to come forward with their accounts of people, activities and events out of the past. Anyone with sage comments or an interest in this program should contact Bob. Interesting stories are already emerging. Exposés on many of the long standing members are surfacing and will be made public at this meeting.
- Ken Searl, Margie Larget, Larry Arnold, Dick Ehmann, Larry Brown, Gordon Todd, Mary Alice Hutchings, Don Ashton, Hunt Ones, Warren Koeple, Don Walton and Lee Kilbourn. We suggest that you folks best check into these stories and then ask the question, “Does your behavior uphold the integrity of the institute?”

As I read this now, I wonder what some of these stories are and how they would compare to our activities now. On the back of The Predicator (1979) it lists committee chairs, board and other members instrumental to running the chapter. To many these are just names on a page. To me... I remember faces, occupations, spouses, kids, and how long I have known them. Some of the people listed in The Predicator are no longer around. Those that are have retired or stepped down from active duty in the chapter.

Another article has the title “missing persons bulletin” which asks for contact information from those members still reading The Predicator. And that is what I must ask now, of our current membership – have you seen or heard from these people recently and do you know how we can get in touch with them?

- Les Seeley
- Mary Alice Hutchings
- Stan Nelson
- Ivan McCormack

I must say we are lucky to know the whereabouts of some of the members from 1979. They continue to lend a hand in the running of the chapter, providing knowledge of our history and sharing wisdom

with our up-and-coming leadership. Thank you to Lee Kilbourn, Pat Murphy, & Don Eggleston.

## Portland Chapter CSI History – by Richard Ehmann

(Originally posted in The Predicator November 1979)

**Richard Ehmann (Originally posted in The Predicator November 1979)**

On December 31, 1958, Ralph Appleman received a letter from W. H. Barrows, Institute Vice President and Chairman of the National Chapter Development Committee. The letter suggested contacting Al Barnes in Seattle regarding the organization of a Portland Chapter. At the that time, only five chapters existed in the West: Los Angeles, organized in 1953; San Diego and Sacramento, 1954; San Francisco, 1955; and Puget Sound in Seattle.

Fifteen people attended a formative meeting on January 29, 1959 and appointed Charles Selig, Lowell Anderson, Kingsley Church, Jim Hickey and Ralph Appleman to serve on a steering committee. Membership forms were received on February 3. By February 7, the steering committee had completed the first draft of the bylaws.

On April 2, an organizational meeting attended by 31 people was held at Benson High School. Those attending gave provisional acceptance to the bylaws and nominated twelve candidates for election to a board. This date – April 2, 1959 – was the first formal meeting of the Portland Chapter CSI functioning under bylaws and operating in lieu of elected officials.

At the next meeting in September the first Board of Directors was elected into office: the charter request was signed by the Chapter members; and the program was devoted to the subject of “Built-up Roof Specs” The Chapter’s first president was Lowell Anderson; the vice president was Ralph Appleman; and the secretary-treasurer was Jim Hickey.

The Predicator first appeared in November announcing the next program on “Liability insurance” presented by Jack Annand and a panel of insurance agents.

The December 1959 meeting with 25 in attendance, concluded almost to the day a full year of life for the Portland Chapter The official charter, however did not catch up with the facts until well into 1960. To mark the twentieth anniversary of the Portland Chapter CSI, a gala celebration is planned for the evening of December 7, 1979 at the Airport Sheraton. The cost of the event is \$25.00 per couple. Reservations must be made by November 30, both to assist the committee and to ensure a place for you and your spouse or guest.

We look forward to seeing you there with or without your date or spouse.

**2019 update from Ellen Onstad**– I was like 10 or so in 1979, so I don’t remember attending this event. Lee has mentioned it as a nice way to celebrate 20 years of the chapter. I am glad as our history gets farther and farther away, we keep the same stories of how the chapter was formed. I am thankful we have some of our records from back then, but we are still missing a lot. If in your Spring Cleaning you find any Portland Chapter CSI History (old issues of The Predicator, Pictures of Chapter meetings or other events, flyers or other promotional items) please forward them to us so we might include in our 60<sup>th</sup> anniversary next year!

Contact [Ellen Onstad](#), Immediate Past President or [Jake LaManna](#), Secretary, and we’ll help coordinate getting this history documented, saved, and distributed to our membership.

---

**Industry Publications**

**Let's Fix Construction Blog Posts**



# LET'S FIX CONSTRUCTION

Our own past President, Cherise Lakeside, along with the Vermont Chapter President, Eric Lussier, have developed a website where all disciplines can submit blogs about issues that they encounter in our industry paired with positive/collaborative solutions or ideas for ways to improve. You can view their latest contributor Michael Chambers blog about Working Effectively with Specifiers here:

<http://www.letsfixconstruction.com/>

If you are interested in sharing your knowledge and insight with all disciplines across our industry, they would love to hear from you. Information on how to submit a blog (no costs involved) are located here: <http://www.letsfixconstruction.com/submit.html>

## Resiliency or Sustainability or Both

**Harold Friberg - Masonry & Ceramic Tile Institute of Oregon - Executive Director**

We look at the pictures of the devastation that took place in 2018 and we see very few buildings that resisted the hurricane force winds and the wildfires in California practically destroyed everything in their path. The East Coast of the United States was ravaged by two Atlantic Hurricanes. Hurricane Michael caused an estimated \$25 billion dollars in property damage and Florence was responsible for close to \$24 billion dollars of property loss. Meanwhile, on the West Coast wildfires were creating havoc. The Camp Fire burned more than 153,000 acres in Northern California, near the town of Chico. The fire caused at least 88 fatalities and destroyed more than 18,000 structures, with the town of Paradise being the hardest hit<sup>1</sup>. What can we do to protect our property from these disasters?

[MORE](#)

**Allied Organizations Events**

**Transparency & Material Health in Practice**



DISCUSSION #3  
JUNE 4, 2019  
PORTLAND, OR

## Transparency & Material Health in Practice:

A DISCUSSION SERIES

PORTLAND  
MATERIALS  
TRANSPARENCY  
COLLABORATIVE



### Healthy Product Selection Using Transparency Data

**TODAY, June 4th at 5:30pm**

**Bora Architects**

**720 SW Washington St #800, Portland, OR 97205**

Portland Materials Transparency Collaborative (PMTC) and Health Product Declaration Collaborative (HPDC) invite you to the discussion  
“Healthy Product Selection Using Transparency Data.”

This is part of our continuing Discussion Series: Transparency and Material Health In Practice.

[Click here for more information.](#)

PORTLAND CSI | [www.portlandcsi.org]





VOLUME 60 | ISSUE 6 | September 2019

## In the Spotlight!

### In This Issue

Portland Art Museum Rothko Pavilion

President's Message:  
Congratulations Cherise!

EP Happy Hour: Tiki Tuesday

Learning and Libations

Fore!

Membership

Volunteers Wanted!

Other Industry Events

### Upcoming Events

Sept 10 -

[Chapter Meeting: The PAM Rothko Pavilion](#)

Kells - 5:30pm

Sept 17 -

[Emerging Professional Happy Hour](#)

Rogue Hall - 4:00pm



## September Chapter Meeting: Portland Art Museum Rothko Pavilion

**Kourtney Strong - LSW Architects - Programs Chair**

The **Portland Art Museum** is creating a new entrance pavilion. Join Portland CSI and Hennebery Eddy Architects at **Kells** on **September 10th** from 5:30pm to 8:00pm.

[Find Out More!](#)

The Rothko Pavilion is a new glass-walled building named to honor the legacy of painter and Portland native son Mark Rothko. The Pavilion represents an investment in Portland and to future generations. The main goal of the pavilion is to provide expanded and enhanced art and public spaces, while increasing accessibility throughout the museum.

Join us for a presentation that will cover the;



Sept 19 -

[Learning and Libations: PPG Color Presentation](#)

Power+Light Building - 5:30pm

October 8 -

Chapter Meeting: PoE  
Technology and the Future of  
Smart Buildings  
Enso Winery - 5:30pm

Oct 9-11 -

CONSTRUCT in Maryland

Oct 23 -

Learning and Libations: Building  
Air Leakage  
Power+Light Building - 5:30pm

Save the Date!

Dec 10 - Ugly Sweater Party!  
More Details to be Released  
Soon!

Upcoming Events

- History of the Museum Site
- Timeline of the Rothko Pavilion project
- Project goals
- Presentation of the current design
- Intended envelope design approach



## President's Message

# Congratulations to an Inspiring Individual Cherise Lakeside - Our Newest CSI Fellow

**Ali LaManna, CDT - Emerick Construction - President Portland Chapter CSI**

I am so pleased to announce that the College of Fellows has decided to induct our very own Cherise Lakeside into the 2019 Class of Fellows. This is one of the highest honors bestowed upon CSI members. This is not handed out to just anyone, but is awarded to individuals that have made important contributions to the advancement of construction technology, improvement of construction specifications, education, and service.

Cherise and I both started with CSI right around the same time, and we were both roped in to joining the board shortly there after. It was not until she saw her name on the ballot the following spring that she found out she had been nominated for the chapter presidency. However, being the Kraken that she is, she stepped up to the plate and Portland CSI was never the same again!

Cherise has an amazing passion for education, and a unique ability to share her experiences and knowledge with the people around her. It has been inspiring to watch her growth as a specifier and as an individual over the last 8 years. She helped Portland grow into a leading chapter in the middle of a recession, and has gone on to help inspire people and chapters all over the





country through speaking engagements, social media, CDT prep courses, and her blog [Let's Fix Construction](#). She has also been the champion for educating and engaging emerging professionals, understanding that the future of the industry rests on getting the younger generation ready to take on leadership roles earlier in their careers than previous generations.

I am so proud of everything that Cherise has accomplished and I know that this is only the beginning.

If you are going to be at CONSTRUCT in October, please make sure to sign up for the CSI Celebration of Fellows following the Awards Ceremony, so that we can help celebrate with Cherise!

You can read more about Cherise [here!](#)



# KRAKEN COMMITTEE

## Calling All Emerging Professionals!

Construction Specifications Institute  
Emerging Professionals


# TIKI TUESDAY

Sponsored by  
Materials Testing & Inspection

**Sep.17th 4:00 -6:00**  
**ROGUE HALL**  
Located on the PSU Campus  
1717 SW. Park Ave. Portland, OR 97201

Wear your hawaiian shirt for  
\$4 dollar beers

Network with Architects, Engineers, and Construction Contractors



**Juan Coronel - Materials Testing & Inspection - EP Chair, Portland Chapter of CSI**

Come join us on Tuesday, September 17th at Rogue Hall for the EP TIKI TUESDAY!

**This is a FREE EVENT and EVERYONE is welcome!**



## Design and Detailing of Reinforced Hollow Clay Masonry

Mark Aasland, CDT - Pace Engineering - Education Co-Chair



On Tuesday August 20, 2019 we had a presentation from Steven Judd with Interstate Brick discussed with us the design and detailing of reinforced hollow clay masonry.

Interstate Brick manufactures three styles of brick, modular, norman and emperor. They manufacture three different height variations in the modular and emperor style that range from 2-1/4" to 7-5/8" and two height variations in the norman style that range from 2-1/4" to 3-5/8". The modular block is manufactured with a length of 7-5/8", the norman is manufactured with a length of 11-5/8" and the emperor is manufactured with a length of 15-5/8".

The variety of different sizes aids with the speed of construction. A mason can install approximately 79 square feet of modular brick, compared to 120 square feet of norman brick and 140 square feet of emperor brick per day.

The speed of construction also contributes to a reduced installation cost. An 20,000 square foot comparison of this was presented.

	units x unit cost	brick cost	labor/unit	labor cost	total
Modular brick	135,000 x \$0.50	\$67,500	\$1.50 x 135,000	\$202,500	\$270,000
Utility brick	60,000 x \$1.50	\$90,000	\$2.00 x 60,000	\$120,000	\$210,000
Emperor brick	45,000 x \$2.25	\$101,250	\$2.25 x 45,000	\$101,250	\$202,500

The structural brick allows for thinner/taller walls that are less complicated to build than veneer over CMU or stud wall systems. These walls can be built from outside in or inside out, reduces the number of connections and creates an easier to insulate envelope. Why use brick? Brick offers lasting value. It doesn't rot, dent or need to be painted, and it will never tear or need to be painted or eaten by termites. It offers a myriad of design options while at the same time providing a timelessness that is hard to match.

Beer and light hors d'oeuvres were provided by CSI.

### September Learning and Libation: 2020 Global Color and Design Forecast

At our September Learning and Libations meeting we will have a presentation from Susan Williams of PPG





who will discuss the 2020 Global Color and Design Forecast.

The meeting is scheduled for September 19th from 5:30 to 7:30 at the Power + light building, Suite 1300.

Our October meeting will be held on October 23rd from 5:30 to 7:30 at the Power + Light building, Suite 1300 and will have a presentation on Building Air Leakage presented by Tremco.

[Register for Events Here!](#)

## 2019 Golf Tournament

### Fore!

**Erica Bitterman-Ryon, CSI - Senior Sales Executive, Precision Images - Golf Co-Chair**

We had a great day out on the course last month at the annual CSI Golf Tournament. It was a sell out crowd and perfect weather. Here are some fun photos in case you missed it! Dates for next year will be announced soon!



## Member News

**New, Renewed, Emeritus and members new to**



# Portland Chapter March, April and May 2019

Lee Kilbourn, FCSI, CCS, FAIA

## BRAND NEW MEMBERS

Daniel Ettelstein, CSI; Northwest Specialty Timber (Note 1); member since 2019  
Julia Mollner, CSI-EP; Carleton Hart (Note 1); member since 2019  
Mark Monroe, CSI; Vaproshield (Note 1); member since 2019  
Jeff Morrison, CSI; Rosboro (Note 1); member since 2019  
Ryan Roberts, CSI-EP; Pella (Note 1); member since 2019  
David Schaleger, CSI; MetroPaint; member since 2019  
Jason Towns, CSI (Note 1); Springs Window Fashions; member since 2019

## CURRENT CSI MEMBER NEW TO PORTLAND CHAPTER

Dane Teegardin, CSI-EP, CDT, LEED GA (Note 2); member since 2018

## RENEWED MEMBERS

Bryan Ackler, CSI; (Note 2); member since 2012  
Bryon Allen, CSI; W.R. Meadows; member since 2008  
Mark Barney, CSI, CDT, AHC; Northwest Hardware Consultants; member since 2002  
Kelly Bryant, CSI, RCI, RRO; Soprema, Inc.; member since 2008  
Maddie Carde, CSI, LEED AP; Cultured Stone by Boral; member since 2015  
Brian Carleton, CSI; Carleton Hart Architecture, PC; member since 1995  
William Clark Jr., CSI, CDT; WM. Clark and Associates, LLC; member since 1991  
Craig Cody, CSI; Architectures; member since 2011  
Russel Donohue, RA, CSI, CDT, NCARB; (Note 2); member since 2007  
Bryce Given, CSI; Guardian Glass; member since 2017  
Etta Goerl, CSI, CCS; Port of Portland (Note 1); member since 2010  
Randall Hagloch, CSI, CDT, AIA; Randall Hagloch Architect, LLC; member since 2008  
John Herrmann, CSI, CDT; Bain Associates, Inc.; member since 1991  
Trasi Hogenhout, CSI; Contractor Plan Center, Inc.; member since 1988  
Clifford Hood, PE, CSI; Hood-McNees, Inc.; member since 1996  
Scott Huff, CSI-EP; D-Seven, LLC; member since 2015  
Paul Hustedt-Krasnove, CSI, CDT, NCARB; (Note 2); member since 2017  
Jim Hutchin, CSI; Bridgetown Sales, LLC; member since 2009  
Geoffrey 'Geoff' Jenks, CSI-EP, ASHRAE; Streimer (Note 1); member since 2015  
Teresa A. Kruse, RA, CSI, CDT, AIA, M. Arch; (Note 2); member since 2016  
Dale Kuykendall, CSI, CDT; Wenaha Group; member since 1986  
John Lape, FCSI, CCS, AIA, CSC, FCSC; John Lape, Architect; member since 1986  
Jack Livingston, CSI; Woodwork Institute; member since 2017  
Alexander Lungershausen, CSI, CCS, CCCA, AIA, LEED AP; Hennebery Eddy Architects; member since 2003  
Randy McAdams, CSI; Atlas Supply; member since 2010  
Cherie McNabb, CSI, CDT; Forbo Flooring Systems; member since 1993  
Karl Michels, CSI; Tarkett Sports Indoor; member since 2014  
Erica Milanowski, CSI; DeaMor (Note 1); member since 2018  
Jim Mitchell, CSI, USGBC; Koroseal Interior Products Group; member since 1992  
Ian Murphy, CSI, CDT; Exterior Allied Systems LLC; member since 1992  
Stanley Nelson, CSI, Member Emeritus, CDT; (Note 2); member since 1975  
Ellen Onstad, CSI, CDT; Interface Engineering; member since 1995  
Bo Oswald, CSI; Essex General Construction; member since 2015  
Ray Rauscher, CSI; Speedy Glass Commercial Division; member since 2015  
Brian Ross, CSI, CCS; (Note 2); member since 2013  
Jeff Rubino, CSI; Oldcastle Building Envelope; member since 2003  
Austin Sloat, CSI, AIA; Neumann Sloat Arnold Architects Inc; member since 2009  
Frank Stewart, CSI; Hoover Treated Wood Products; member since 2018  
Dane Teegardin, CSI-EP, CDT, LEED GA; (Note 2); member since 2018  
Anna Todd, CSI, LEED AP; Todd Construction, Inc.; member since 2012  
Michael Wilson, RA, CSI, CDT; SERA Architects; member since 1991  
George Wolodzko, CSI; GTG Consultants (Note 1); member since 1994  
Susan Wurdeman, CSI, NCARB; BRIC Architecture Inc; member since 1997  
David York, CSI, AIA; York Architect (Note 1); member since 2013

## MEMBERS EMERITUS WITH MARCH, APRIL AND MAY ANNIVERSARY DATES

Fred Chomowicz, CSI, Member Emeritus; (Note 2); member since 1983

Ronald Lee, CSI, Member Emeritus, AIA; BBL Architects; member since 1985

Stanley Nelson, CSI, CDT; Architect; member since 1975

James Wright, CSI, Member Emeritus, CDT; (Note 2); member since 1995

NOTES (Members with no Company listed in Institute Record)

1. Company name derived from email address.
2. No company name available.



## Volunteers Needed!

It takes a village to do all of the incredible things we do at Portland CSI, and we are always looking for fresh ideas and willing hands to help. Here are a few spots that could really use some new faces:

- Industry Forum Planning Committee
- Predicator Writers and Editor
- Social Media Poster
- Website Editor

If you are interested in helping out please email [office@portlandcsi.org](mailto:office@portlandcsi.org)

## June Learning & Libations: Vancouver Public Schools Tour Recap



## Marshall Elementary & McLoughlin Middle School Site Tour

**Mark Aasland and Jenn Thomas, Co-Chairs for CSI Learning and Libations**

On Wednesday June 19, 2019 Skanska conducted a tour of the their Marshall Elementary/McLoughlin Middle School site. The project is being constructed on a site between the two existing schools located along MacArthur Blvd. in Vancouver.

The project consists of a 420 student and 200 student Early Childhood Special Education capacity, 75,250 square foot K-5 elementary school as well as a 1,100 student capacity, 127,400 square foot 6-8 middle school. The new schools will be combined yet separated. The connected building will



however, allow each school to maintain its unique identity. Each school will have its own entrance and parking area, but they will share a Family-Community Resource Center, kitchen and media center.



There is a variety of different construction materials being used on the project. Laminated Veneer Lumber (LVL) framing, Glulam beams, steel columns, CLT floor panels, concrete tilt panels, etc. The use of LVL framing is very stable and resists, warping, slitting and shrinking in lieu of metal studs necessitated the need for a number of the utilities to be routed under the first floor slab and up it the walls. A number of decisions had to be made when tilting the concrete panels and the location of the temporary bracing in order to allow access by the other trade contractors to install the ledger supports for the CLT floor panels.

The schools are being constructed using funds that local voters approved in February 2017. The bond measure will allow the district to build three new schools; replace, remodel and/or enlarge several schools; and provide improvements and updates to all other schools in the district. Construction began on the site in September of 2018 and will be completed in 2020.

After the tour several people gathered at Ben's Bottle Shop in Vancouver for additional networking. The first round of drinks and light hors d'oeuvres were provided by CSI.



## Other Industry Events

### Portland Canstruction Event – An International Competition



Celebrating our 23rd year in Portland as one of the world's most imaginative food charities, the Canstruction® exhibition and competition is a unique international competition wherein teams of architects, engineers, and contractors compete to build giant whimsical and wildly inventive sculptures made entirely out of full cans of food. The teams' structures are displayed to the public for a week at Pioneer Place from September 23-29, 2019.

In addition to celebrating our 23rd year, September is Hunger Action Month™ when America takes action to fight hunger in their community. All month long, you have the opportunity to make an impact on our effort to feed more Americans than ever before. Help us raise awareness by making donations or volunteering, so we can solve hunger together.



Currently, 260,000 people each month receive nutritious food from the Oregon Food Bank Network each month. Our goal for 2019 is to raise 60,000 meals to help feed thousands of people struggling with hunger in our community. Since its inception, this Portland event has raised more than 1 million meals to help fight hunger in Oregon and Clark County,



[More Information](#)

Washington. After the teams construct their masterpieces, each structure will be judged by the Portland Construction® jury and awards will be given for Best Meal, Structural Ingenuity, Best Use of Labels, Best Original Design, and the Golden SPAM Award.

---

## AFO Architects in Schools

Architects in Schools (AiS) matches design and building professionals including architects, engineers, contractors, interior designers, landscape architects, city planners, architecture historians, architecture students and more with 3rd, 4th & 5th grade teachers for a 6-week classroom residency (approximately 1-2 hours a week per class), offered free of charge to schools.



[Get More Information!](#)

**The Deadline for Design and Constitution Professionals to apply is September 20th!**

PORTLAND CSI | [[www.portlandcsi.org](http://www.portlandcsi.org)]

