



[About](#) | [Join](#) | [Attend](#) | [Contact](#)



VOLUME 57 | ISSUE 1 | **JANUARY 2017**

[Got News?](#)

IN THE SPOTLIGHT

## January Chapter Meeting: Annual Construction Forecast

*Alicia LaManna, CSI, CDT, Programs Chair*

Tuesday, January 10, 2017 from 5:30-8:00 PM  
Widmer Brewery Banquet Room

2016 had an unpredictable ending and the political environment has turned in a new direction. Although the construction industry continues to expand, political influences create some uncertainty in the construction industry in the next year. Cliff Brewis with Dodge Data & Analytics will be back to talk about the major national economic influences forecasted for the next year and will then move to a more local perspective. Sponsorship opportunities still available!

[REGISTER OR SPONSOR HERE >](#)

**Thank you to the Programs Sponsors of 2016!**

Thank you so much to the following companies for sponsoring our chapter meetings in 2016! We try to keep our cost low for members and guests to allow all to attend these great events, and that is completely dependent on finding sponsorship support. We could not do what we do without you!



### In this Issue

January Chapter Meeting

President's Message

December Meeting Recap

Industry Forum 2017

Corporate Sponsorship Opportunities

Save the Date

CDT Certification Classes

Members Renewed

CSI Bi-Region Conference

### Upcoming Events

**January 10, 2017**  
[Chapter Meeting: Annual Economic Forecast](#)  
5:30-8:00 PM





Build something great™



SPECIFICATION PRODUCTS

Widmer Brewery

**February 2**  
CDT Certification Classes  
Begin

**February 14**  
Chapter Meeting: Grill  
the Developer

**March 16**  
CSI Industry Forum  
2017

**April 11**  
April Chapter Meeting  
Resiliency: How to  
Prepare for the "Big  
One"

**May 9**  
May Chapter Meeting:  
Topic TBD

**June 13**  
Annual Chili Cook-Off  
and Awards Night

**July 11**  
Annual Architectural  
Scavenger Hunt

**August 24**  
Annual Golf Tournament  
Lewis River Golf Course

CSI Sponsors

**Support CSI, Learn**  
**How Here >**

## PRESIDENT'S MESSAGE

### President's Message

*Ellen Onstad, CSI, CDT, Board President*



Sometimes I think the new year is like a new day. Get up bright and early, get coffee, list the priorities of what you want to accomplish, deadlines, reports, rush items, things that are low on the list, and fun things it would be nice to get done today.

Then mid-morning, an email or phone call arrives from your boss, manager, customer out of the blue - it throws everything out of whack. The priorities you first envisioned get scrapped and a whole new day is taking shape, and it doesn't remotely resemble your original plans. So, once the fire or urgent project has been dealt with and everything is back on track, now what? Do you go back to the original plan? Or toss that, use what you have learned from the change to reshape your day, your way of thinking?

Some of us like order, lists, paper, and the safety of routine. Others will strive on chaos. I personally, am a huge procrastinator (I didn't use to be - this is a new realization in my life) but I like lists, I really do. My husband thinks I am organized, but he also knows if there is something I am not looking forward to, I will procrastinate until it becomes a problem (or it forces me to get it done).

We all have goals-either personal or professional-things that are forced upon us, or great ideas that we would like to accomplish. What are your new year's resolutions? What is on your bucket list to accomplish this year? What is the thing that scares you, but is achievable? For most, it is speaking in front of a group. For me that is fun (as long as I know what I am going to say). For me, it is writing articles monthly (What am I going to say? Why would anyone listen to me? How do I translate leadership into involvement in the chapter, region, national levels of CSI? What did I say last month and how do I not repeat myself over and over again?)

So forgive me if you have heard this before. It is said to not let a small thing corrupt your day. How about not letting a bad day change an entire year. If one event has soured your involvement, then what can you do to change that? On the opposite side, if you attended something that was wonderful, what can you do to make sure the next one is just as

good if not better? What can you do for CSI to help our local chapter get better and what can CSI do to help you with your personal and professional goals?

Now if I could just find my to do list, and get back to what I was doing before I got the reminder that this is due! Happy New Year, everyone! I hope to see you at the upcoming January meeting!

## CSI PORTLAND NEWS

### AEC Industry Still Ugly

*Jake LaManna, CSI, CDT, Education Chair*



This year's 2nd Annual Ugly Sweater Holiday Mixer continued to improve on the success of the inaugural event from last year. This year's event was jointly organized by the Emerging Professionals Committee at AIA, ASHRAE's young professional group, and the Portland Chapter of CSI. Around 50 emerging professionals, experienced professionals, and students representing CSI, ASHRAE, AIA and several regional universities all came together wearing their ugly sweaters and celebrating our shared interest in the betterment of the building and design industry.

The winners' of Ugliest Sweater and Most Creative Sweater walked away with great prize baskets donated by Precision Images! Unfortunately, they also walked away without any photos being captured, so the enjoyment of those ugly sweaters shall remain solely with those who attended the event.

A big thanks to all the volunteers, including John Maternoski with Portland Design Events for additional publicity and the staff at Lighting Will's Bar and Grill for providing a spectacular venue, food, and music! We look forward to organizing the 3rd Annual Ugly Sweater Holiday Mixer next year, and are already looking for someone to be a dedicated volunteer photographer for the event.

Happy New Year from the Emerging Professionals, Education, and Programs Committees!

### Industry Forum 2017 Offers Speed Education



March 16, 2017 from 3:00 PM to 8:30 PM at the Portland Art Museum.

The 2017 Industry Forum will feature a Speed Education session from 3:30-5:00 PM. Speed Education is in partnership with [AIA Portland](#), it offers an unique opportunity for attendees to learn the latest products and services available to the AEC industry.

[REGISTER HERE >](#)

Sponsorships are now open with early bird pricing until Jan 31, 2017

- Platinum \$2,250.00 (\$2,500.00 after 1/31/2107)
- Gold \$1,495.00 (\$1,600.00 after 1/31/2017)
- Silver \$995.00 (\$1,200.00 after 1/31/2017)
- Bronze \$595.00 (\$700.00 after 1/31/2017)

[SPONSOR HERE >](#)

A very special thank you to Interior Technologies for being the 'Event Sponsor' for 2017 Industry Forum!!

Sponsorships available; Platinum, Gold, Silver and Bronze. Thank you to our current list of sponsors.

Platinum: DeaMor

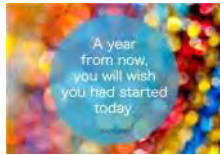
Gold: Window Tech, International Masonry Institute, FortiFiber

Silver: Miller Paint, Boral,

Bronze: Pacific Architectural Products, Northwest Wall and Ceiling Bureau, R-stud, LLC

## Corporate Sponsorships Available in the New Year

*Leslie Case, CSI, Board Director*



Corporate sponsors seem to be everywhere in today's world. Take the Olympics, for example. Hard to imagine what the skating rink would look like without those ubiquitous banners touting fast-food restaurants and cell phone companies. It's not just the big events that draw sponsors, either. Small, local events-10K runs, award dinners, neighborhood festivals-usually have a slew of corporate logos in the accompanying literature.

Why is corporate sponsorship so prevalent? Quite simply, it makes money. Done correctly, it can make a lot of money, expand your brand and what I believe to be the most important aspect, build important relationships. We at CSI Portland rely on both membership dues, corporate sponsors and the tireless efforts of our volunteer board members and committee teams.

We encourage those of you that have been thinking 2017 is a great time to get more involved to please contact us with your preferences; whether it's a board position, selecting a committee and or corporate sponsorship, all is welcome and appreciated. Why wait.... Get involved and help make a positive difference in 2017! Detailed information is available [HERE >](#)

"A year from now you will wish you had started today." - Karen Lamb

If you have questions please feel free to e-mail CSI Portland directly at our new email address [office@portlandcsi.org](mailto:office@portlandcsi.org).

## Open Your Calendars!

February 14, 2017 - LUNCH MEETING

Chapter Meeting Topic TBD

We're looking into topics such as the Post Office Master Plan, Vancouver Gramor Development, OSU Cascade Campus. If you have a topic you are really interested in seeing, please email Ali LaManna at [programs@portlandcsi.org](mailto:programs@portlandcsi.org)

March 16, 2017

CSI Portland Chapter Industry Forum 2017

Industry Forum 2017, attended by hundreds of designers, engineers, contractors, product reps, and owners, provides the AEC community an

annual and stimulating look at what's innovative in the industry. More details will be announced soon! Mark your calendars! Sponsorship opportunities are available now! [REGISTER HERE >](#)

April 11, 2017

**Resiliency: How to prepare for the "Big One"**

This panel presentation will cover a variety of topics regarding resiliency and earthquake preparedness, and how the AEC community in Portland can play a larger role.

May 9, 2017

**Chapter Meeting Topic TBD**

We're looking into topics such as the Post Office Master Plan, Multnomah Courthouse, and OSU Cascade Campus. If you have a topic you are really interested in seeing, please email Ali LaManna at [programs@portlandcsi.org](mailto:programs@portlandcsi.org)

June 13, 2017

**CSI 5th Annual Chili Cook-Off and Awards Night**

Warmer weather means more fun with Portland CSI! The Annual Chili Cook-Off is the perfect event for all you networking chili-lovers. Whether you want to join the competition as a team with your own chili recipe, or just come to judge your colleague's cooking skills and costumes, you are more than welcome. This is also our annual chance to thank all of our hardworking volunteers with the Portland Chapter Awards, and all of our members with low price tickets for a fun and festive evening.

July 11, 2017

**Annual Architectural Scavenger Hunt (FREE EVENT!)**

Put on your thinking cap, grab the map and the clues, and come test your architectural knowledge! The summer time is also the time for our Annual Architectural Scavenger Hunt, and we are busy hunting down clues to make a fun and challenging trail for you to follow. Brush off your sleuthing skills and save the date for July 12th. This is a free event with a hosted Happy Hour to follow, so spread the word around your office to anyone that is interested in coming to see what Portland CSI is all about!

August 24, 2017

**2017 Portland Chapter CSI Golf Tournament at Lewis River**

The golf course will be calling your name soon enough, so why not put it on your calendar early? Find your golf mojo and join us for a fun-filled day in the sun and support the CSI scholarship program in the process. Prizes awarded, raffle tickets available, banquet following, and fun for all.

[REGISTER OR SPONSOR HERE >](#)

For more information and registration: [Portland.csinet.org](http://Portland.csinet.org)  
Sponsorship opportunities available! Contact [Ali LaManna](#) for more details.

## CERTIFICATION

### CDT Certification Classes Coming in 2017

*Cherise Lakeside, CSI, CDT, Certification Chair*

Are you interested in furthering your professional education and providing better services to your clients? Then get CDT (Construction Documents Technologist) certified in the spring of 2017 with the support of Portland's CSI Chapter. We offer classes with experienced instructors to help you understand the material needed to pass the exam.

CSI professional credentials are evidence of proven knowledge, education,

and experience with construction documents. Holding a certification demonstrates professional commitment, credibility and reliability to employers, colleagues, and clients.

This seven-class series is useful for anyone in the A/E/C industry who is interested in understanding the process, roles/responsibilities, and project delivery from cradle to grave. This class is also beneficial as an additional resource to the textbook for preparing for the CDT exam. Through CSI's Certification Program, you can develop a conceptual understanding of the entire construction process and concrete skills in:

- Construction documentation development and administration
- Specification writing and enforcement
- Product research and sourcing
- Communication with the design and contracting teams

[LEARN MORE HERE >](#)

## MEMBERSHIP

### Membership

*Lee Kilbourn, FCSI, Membership Chair*

Renewed and New Members, September 2016

- Doug Allen, CSI, CDT; ASSA ABLOY Door Security Solutions; member since 1999
- Geoffrey "Geoff" Jenks, CSI-EP; member since 2015
- Richard Rapp, CSI, CDT, NCARB; TVA Architects; member since 2013
- Randall Rieks, CSI, LEED GA; Hennebery Eddy Architects, Inc.; member since 2016 - **NEW**
- Michael Riscica, CSI, AIA; Riscica, Michael, Architect; member since 2016 - **NEW**
- Scott Tyson, CSI, CDT; Sika Corporation; member since 2002
- Richard Wickizer, CSI, CDT; Wickizer & Associates; member since 2012
- Michael Wilson, RA, CSI, CDT; SERA Architects; member since 1991
- Nick Wutzke, CSI; Halfen USA; member since 2012

Member emeritus with September anniversary date:

- Edward Fatz, CSI, CDT; member since 1992

## CSI REGIONAL NEWS

### Save the Date



CSI Northwest & West presents:

**2017 Bi-Region Conference**  
**May 18-20, 2017**

When: May 18-20, 2017

Location: Seattle, Washington  
Hotel: Sheraton-Seattle

AIA Educational Sessions to include the following:

1. Revit
2. Construction Management
3. Material Sciences
4. Concrete and hands on demonstrations
5. Estimators
6. NW Day and Sustainability

As well as manufacturer trade shows and tours. More information to follow!

CSI's mission it to advance building information management and education of project teams to improve facility performance. We are the only organization that brings together all the players in the built industry.

Portland Chapter CSI, PO Box 6683, Portland, OR 97228

[SafeUnsubscribe™ jlamanna@walshconstruction.com](mailto:SafeUnsubscribe™_jlamanna@walshconstruction.com)

[Forward this email](#) | [Update Profile](#) | [About our service provider](#)

Sent by [office@portlandcsi.org](mailto:office@portlandcsi.org)



[About](#) | [Join](#) | [Attend](#) | [Contact](#)



VOLUME 57 | ISSUE 2 | **FEBRUARY 2017**

[\*\*Got News?\*\*](#)

IN THE SPOTLIGHT



**In this Issue**

- February Chapter Meeting
- President's Message: Leadership
- January Meeting Recap
- Annual Golf Tournament
- Save the Date
- Learning & Libations Series
- CDT Certification Classes
- Members Renewed
- Are You a Worthy Fellow?
- CSI Bi-Region Conference

**February Chapter Meeting: Construction Organization Meet and Greet**

*Alicia LaManna, CSI, CDT, Programs Chair*

Tuesday, February 21, 2017 from 5:30-8:00 PM  
University Place Hotel & Conference Center

Where is the love? Right here on February 21st. And in this polarizing political climate, we can all use a little love and unity. We enthusiastically invite you to attend a joint meeting between ASPE Columbia Chapter 54, CSI Portland Chapter, AACE, and ASHRAE Oregon Chapter and share the love with our partners. Join us and learn more about other organizations in the construction industry, meet members you may/will work with on future projects, and learn from colleagues in other trades.

[REGISTER HERE >](#)

PRESIDENT'S MESSAGE

Upcoming Events

**February 2**  
[CDT Certification Classes](#)





## President's Message: Leadership

*Ellen Onstad, CSI, CDT, Board President*

What does it mean to you? What does it mean to me?

What about your work, other volunteer organization, many opportunities exist in the Portland Chapter, within the Region and also on a national level. What are you interested in? Have you looked at committees on our website, asked the chairs during chapter meetings? Make a note: our chapter meetings are held on the second Tuesday of the month (except for February and March this year). That way we always know when it is. It can be on your calendar for months in advance.

Other upcoming events to learn more about CSI: West by Northwest Region Conference May 18-20, 2017 in Seattle and CONSTRUCT, the CSI National Convention, is September 12-16, 2017 in Providence, Rhode Island. If you are interested in either conference please let us know.

## CSI PORTLAND NEWS

### What's in Store for Construction in 2017?

*Kourtney Strong, CSI, Director*

A big thanks to everyone who came out for the always-popular Construction Outlook 2017 despite the snow storm on its way into Portland. Cliff Brewis, VP Operations, launched right in and answered the question on many people's mind--How will the new administration impact the construction industry? The take-away is that President Trump's economic stimulus including tax cuts, deregulation, and infrastructure spending is expected to boost business and construction, but areas of concern include global trade wars and the federal budget deficit.

Nationally, the prediction for 2017 is a +2.4% increase to the GDP with employment growth slowing gradually, increases in wages, and billions of dollars already in the works for federal spending projects. Single family housing continues to fall behind the demand, not only here in Portland, but across the country.

The following predictions for various market sectors here in Oregon were touched upon:

- Single family housing growth expected; struggling at entry level housing
- Multi-family housing decline expected; signs of a peak in 2016
- Office buildings continued growth expected; strong technology sector in our area

## [Begin](#)

### **February 15**

Learning & Libations  
Series: Engineering  
Community Resilience  
through New Schools  
Designs

### **February 21**

[Chapter Meeting:](#)  
[Construction](#)  
[Organization Meet and](#)  
[Greet](#)

5:30-8:00 PM

University Place Hotel &  
Conference Center

### **March 16**

[CSI Industry Forum](#)  
[2017](#)

### **April 11**

April Chapter Meeting  
Resiliency: How to  
Prepare for the "Big  
One"

### **June 13**

Annual Chili Cook-Off  
and Awards Night

### **July 11**

Annual Architectural  
Scavenger Hunt

### **August 24**

[Annual Golf Tournament](#)  
Lewis River Golf Course

## CSI Sponsors

[Support CSI, Learn](#)  
[How Here >](#)

- Hotels decline expected; market is cyclical and 2016 had strong growth
- Warehouse/retail decline or leveling of growth expected; markets are now tied together due to growth of online vs. brick-and-mortar shopping
- Education continued growth expected; back into a recovery mode with opportunities for state funding assistance at the K-12 level
- Healthcare decline expected; continued uncertainty with pending repeal of ACA
- Infrastructure/highways near level expected; momentum is gaining but continues to be underfunded

Overall, Oregon is anticipated to follow the national trend and is projected to see a +2% increase in total construction dollars. As a point of perspective, when looking at cyclical troughs dating back to 1975, our current trend (2011-now) is following the last cycle (1991-2011). Something to keep an eye on over the next few years.

[VIEW THE PRESENTATION HERE >](#)

## It's Who You Know

*Leslie Case, CSI, Publicity Chair*

According to Dodge Data and Analytics, "Referrals, word-of-mouth and networking account for as much as 80% of B2B sales." Having said that, why then do most manufacturers lack a formal networking strategy? Networking is the process of connecting with people, sharing information and building relationships and it is a powerful, cost effective way to get the attention of those who specify, select and ultimately purchase your products. Even more importantly it's not always a linear process. You may be working with an architect or specifier but this may not be enough. Networking with general contractors, installers, owners and even other manufacturers is critical in connecting the dots via the age old adage, "it's not just what you know, but who you know" and I will take it one further, "who they know".



## Save the Date: Annual Golf Tournament

*Erica Bitterman-Ryon, CSI, Golf Chair*

Hello to all of last year's golfers and sponsors of the CSI Annual Golf Tournament.

I know you are all wondering if I am crazy. Well I am a little. But why would I send out a golf announcement while it is still cold and we JUST got rid of the snow? Again, slightly on the crazy side, been doing this for over 15 years, the sun has gotten to me just a little.

There is a method to madness, however. This is your official Save the Date. Please don't forget to add us to your calendar and budget. And with a sellout crowd two years in a row, "the early bird gets the worm" or

squirrel maybe in our case... or all of the above.

And since our sponsors have been loyal to us, we want to reciprocate. All of last year's participants get the first pick of your spots. So hurry and sign up today. We do have our first group of sponsors for the year already. NW Wall and Ceiling Bureau, Professional Roof Consultants, Ameriprise Financial Services, Inc. and JLD Construction Consulting.

[REGISTER OR SPONSOR HERE >](#)

I greatly appreciate your support and participation, for many of you....years and years.....of support and participation. I could not do this event without y'all, and I so hope you have a great time every year and that is what makes you come back for more of my craziness.

The snow and cold weather will fade soon, the sun will be bright, beautiful and warm once again. Golf will be here before you know it.

See you all soon and stay warm and toasty for now.

## Mark Your Calendars

February 15, 2017

Learning & Libations Series: Engineering Community Resilience Through New School Designs

Walsh Construction Company, Forster Conf. Rm,  
2905 1st Avenue, Portland, OR 97201

March 16, 2017

CSI Portland Chapter Industry Forum 2017

Industry Forum 2017, attended by hundreds of designers, engineers, contractors, product reps, and owners, provides the AEC community an annual and stimulating look at what's innovative in the industry. More details will be announced soon! Mark your calendars! Sponsorship opportunities are available now! [REGISTER HERE >](#)

April 11, 2017

April Chapter Meeting

Resiliency: How to prepare for the "Big One"

This panel presentation will cover a variety of topics regarding resiliency and earthquake preparedness, and how the AEC community in Portland can play a larger role.

June 13, 2017

June Chapter Meeting

CSI 5th Annual Chili Cook-Off and Awards Night

Warmer weather means more fun with Portland CSI! The Annual Chili Cook-Off is the perfect event for all you networking chili-lovers. Whether you want to join the competition as a team with your own chili recipe, or just come to judge your colleague's cooking skills and costumes, you are more than welcome. This is also our annual chance to thank all of our hardworking volunteers with the Portland Chapter Awards, and all of our members with low price tickets for a fun and festive evening.

July 11, 2017

July Chapter Meeting

Annual Architectural Scavenger Hunt (FREE EVENT!)

Put on your thinking cap, grab the map and the clues, and come test your architectural knowledge! The summer time is also the time for our

Annual Architectural Scavenger Hunt, and we are busy hunting down clues to make a fun and challenging trail for you to follow. Brush off your sleuthing skills and save the date for July 12th. This is a free event with a hosted Happy Hour to follow, so spread the word around your office to anyone that is interested in coming to see what Portland CSI is all about!

August 24, 2017

### 2017 Portland Chapter CSI Golf Tournament at Lewis River

The golf course will be calling your name soon enough, so why not put it on your calendar early? Find your golf mojo and join us for a fun-filled day in the sun and support the CSI scholarship program in the process. Prizes awarded, raffle tickets available, banquet following, and fun for all.

[REGISTER OR SPONSOR HERE >](#)

For more information and registration: [Portland.csinet.org](http://Portland.csinet.org)  
Sponsorship opportunities available! Contact [Ali LaManna](#) for more details.

## EDUCATION



## Learning & Libations

*Jake LaManna, CSI, CDT, Education Chair*

L&Ls are back with 'Resilience' in 2017. Join us at 5:30 PM on Wednesday, February 15th for *Engineering Community Resilience, Through New School Designs*. The learning is being presented by Richard Steinbrugge, Executive Administrator for Facilities for the Beaverton School District.

The Beaverton School District is executing a \$680 million bond program approved by voters in May 2014. The district sponsored a community-wide effort to translate the concepts of the Oregon Resilience Plan into forward-thinking design criteria, which exceed code requirements for new school buildings. The seven new schools Beaverton is building will achieve seismic Risk Category IV for the structural components and they also contain features to support serving as temporary community shelters after a disaster. This presentation will provide an overview of the School District's \$680 million Bond program, discuss the motivations for the resilience work, criteria selected, and cost impacts.

## CERTIFICATION



## CDT Certification Classes Start February

*Cherise Lakeside, CSI, CDT, Certification Chair*

Are you interested in furthering your professional education and providing better services to your clients? Then get CDT (Construction Documents Technologist) certified in the spring of 2017 with the support of Portland's CSI Chapter. We offer classes with experienced instructors to help you understand the material needed to pass the exam.

CSI professional credentials are evidence of proven knowledge, education, and experience with construction documents. Holding a certification demonstrates professional commitment, credibility and reliability to employers, colleagues, and clients.

This seven-class series is useful for anyone in the A/E/C industry who is interested in understanding the process, roles/responsibilities, and project delivery from cradle to grave. This class is also beneficial as an additional resource to the textbook for preparing for the CDT exam. Through CSI's Certification Program, you can develop a conceptual understanding of the entire construction process and concrete skills in:

- Construction documentation development and administration
- Specification writing and enforcement
- Product research and sourcing
- Communication with the design and contracting teams

[LEARN MORE HERE >](#)

## MEMBERSHIP

### Membership

*Lee Kilbourn, FCSI, Membership Chair*

Renewed and New Members October 2016 PDX CSI

- Sulaiman Banwal, CSI-EP; Hilti Inc.; member since 2016 - **NEW**
- Michelle Cartwright, CSI; Artek, Inc.; member since 2013
- James Choate-Deeds, CSI, AIA, LEED AP; CPI Daylighting - **NEW**; member since 2016
- Tony DiVincenzo, CSI, LEED GA; Ideate Inc.; member since 2012
- Chris Fronsoe, CSI-EP; ICD High Performance Coatings; member since 2016 - **NEW**
- Melanie Gibbs, CSI; Miller Paint Company; member since 2016 - **NEW**
- Cody Grabenhorst, CSI-EP; Malarkey Roofing; member since 2012
- Stephen Hubbard, CSI; Mutual Materials Company; member since 1993
- Brian Keil, CSI, CCPR; The Sherwin Williams Company; member since 1996
- Michael Lemen, CSI, CDT; Metl-Span; member since 2015
- Alan Loftness, CSI; A-Tech/Northwest, Inc.; member since 1979
- John Maternoski, CSI-EP; Hennebery Eddy Architects; member since 2008
- Halliday Meisburger, CSI, CDT, AIA; ZGF Architects; member since 2013
- Corey Morris, CSI, CDT, NCARB; Carleton Hart Architects; member since 1998
- Patrick Murphy, CSI, CDT; member since 2015
- Logan Raivio, CSI-EP; Pacific Architectural Products; member since 2013
- Terry Wildeboer, CSI; Isolatek International; member since 1991

Members Emeritus with membership anniversary in October:

- J. Min Luey, CSI, Member Emeritus; member since 1968
- Ivan McCormick, CSI, Member Emeritus, CDT; member since 1971
- James Davidson, CSI, Member Emeritus; member since 1977
- H. Curtis Finch, CSI, Member Emeritus, FAIA; member since 1978

## CSI REGIONAL NEWS

### Are You a Worthy Fellow?

*Rick Heiserman, FCSI, AIA, CCCA, Chairman Jury of Fellows*

Greetings. As a member of the Jury of Fellows, we are encouraging Chapter Leaders to consider members worthy of Fellowship in CSI to prepare the documentation of those individuals for consideration. The deadline for the Dossier and Endorsement Letters is May 5th, 12:00 PM EST at CSI Institute in Alexandria, VA. All documentation must be submitted to the Institute electronically.



When: May 18-20, 2017  
Location: Seattle, Washington  
Hotel: Sheraton-Seattle

AIA credit for educational Sessions to include the following:

1. Revit
2. Construction Management
3. Material Sciences
4. Concrete and hands on demonstrations
5. Estimators
6. NW Day and Sustainability

As well as manufacturer trade shows and tours. More information to follow!

CSI's mission is to advance building information management and education of project teams to improve facility performance. We are the only organization that brings together all the players in the built industry.

Portland Chapter CSI, PO Box 6683, Portland, OR 97228

[SafeUnsubscribe™\\_jlamanna@walshconstruction.com](mailto:SafeUnsubscribe™_jlamanna@walshconstruction.com)

[Forward this email](#) | [Update Profile](#) | [About our service provider](#)

Sent by [office@portlandcsi.org](mailto:office@portlandcsi.org)



[About](#) | [Join](#) | [Attend](#) | [Contact](#)



VOLUME 57 | ISSUE 3 | **MARCH 2017**

[\*\*Got News?\*\*](#)

IN THE SPOTLIGHT



## Industry Forum 2017: Ready to Network?

*Corey Morris, CSI, CDT, Industry Forum Committee Member*

Thursday, March 16, 2017  
Portland Art Museum, Kridel Ballroom

The CSI Industry Forum featuring Michael Rotondi's presentation Technology: Matter to Light is Thursday March 16th at the Portland Art Museum.

### In this Issue

March Chapter Meeting:  
Industry Forum 2017

Did You Know CSI is on  
LinkedIn?

Annual Golf Tournament

Save the Date

Certification Exam  
Registration

Members Renewed

2017 RCI Puget Sound  
Chapter/Portland Branch  
Meeting & Educational  
Presentation

CSI Bi-Region  
Conference

Got Code Conflicts?

2017 Women in Trades  
Career Fair

EERI 69th Annual  
Conference



The 2017 Industry Forum is better than ever, 3.5 HSW AIA CEU's available, a speed education session and door prizes (Amazon Echo, Beats Wireless Headphones, and Dewalt 4-Tool Kit + Circular Saw)

Join us for an evening filled with dynamic presentations, networking, and education from local sponsors on the latest products & technology.

#### Event Schedule

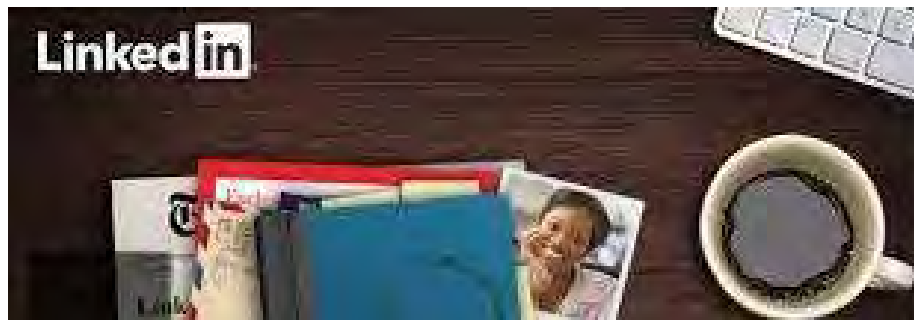
3:00 to 3:30 Registration  
3:30 to 5:00 Speed education  
5:00 to 6:00 5 x 10  
6:00 to 7:15 Food & networking  
7:15 to 7:30 Introductions & door prize(s)  
7:30 to 8:30 Keynote presentation by Michael Rotondi

[REGISTER HERE >](#)

There are still sponsorship spots available. Don't miss your opportunity to see and be seen at this event. Plus, Silver and higher sponsorships come with an opportunity for you to participate in Speed Education, in partnership with AIA Portland. Architects will be begging to hear about your products and services as they earn coveted CEU credits.

[BE A SPONSOR HERE >](#)

#### CSI PORTLAND NEWS



### Did You Know CSI is on LinkedIn?

*Leslie Case, CSI, Publicity Chair*

LinkedIn is a social media platform that caters to those in the business community that desire the vast networking power of social media without sacrificing the attention of the people using LinkedIn. On LinkedIn, you will only see business related material that many will find useful. At CSI Portland our LinkedIn offers this and more:

- Access to experts in other areas
- Extensive network to connect with in the built & construction community
- Forums to discuss topics and challenges
- Information about latest trends and projects
- Access to Chapter events and seminars

We hope you connect with us, follow our page and engage.

[VISIT OUR LINKEDIN PAGE HERE >](#)

Women in Construction:  
A Conference to Educate  
& Empower

Helical Design: Code  
Compliance & Effects of  
Seismic Activity

#### Upcoming Events

##### **March 1**

Helical Design:  
Code Compliance &  
Effects of Seismic  
Activity

##### **March 7-10**

EERI 69th Annual  
Conference

##### **March 16**

[CSI Industry Forum  
2017](#)

##### **April 11**

April Chapter Meeting  
Resiliency: How to  
Prepare for the "Big  
One"

##### **April 27**

Women in  
Construction:  
A Conference to  
Educate & Empower

##### **May 18-20**

2017 Bi-Region  
Conference  
Seattle, WA

##### **May 19-20**

Women in Trades Career  
Fair

##### **June 13**

Annual Chili Cook-Off  
and Awards Night

##### **July 11**

Annual Architectural  
Scavenger Hunt

##### **August 24**

[Annual Golf Tournament](#)  
Lewis River Golf Course

#### CSI Sponsors

[Support CSI, Learn  
How Here >](#)



## Save the Date: Annual Golf Tournament

*Erica Bitterman-Ryon, CSI, Golf Chair*

Hello to all of last year's golfers and sponsors of the CSI Annual Golf Tournament.

I know you are all wondering if I am crazy. Well I am a little. But why would I send out a golf announcement while it is still cold and we JUST got rid of the snow? Again, slightly on the crazy side, been doing this for over 15 years, the sun has gotten to me just a little.

There is a method to madness, however. This is your official Save the Date. Please don't forget to add us to your calendar and budget. And with a sellout crowd two years in a row, "the early bird gets the worm" or squirrel maybe in our case... or all of the above.

And since our sponsors have been loyal to us, we want to reciprocate. All of last year's participants get the first pick of your spots. So hurry and sign up today. We do have our first group of sponsors for the year already. NW Wall and Ceiling Bureau, Professional Roof Consultants, Ameriprise Financial Services, Inc. and JLD Construction Consulting. [REGISTER OR SPONSOR HERE >](#)

I greatly appreciate your support and participation, for many of you....years and years....of support and participation. I could not do this event without y'all, and I so hope you have a great time every year and that is what makes you come back for more of my craziness.

The snow and cold weather will fade soon, the sun will be bright, beautiful and warm once again. Golf will be here before you know it.

See you all soon and stay warm and toasty for now.



## Mark Your Calendars

April 11, 2017

April Chapter Meeting

Resiliency: How to prepare for the "Big One"

This year Portland CSI is taking a closer look into resiliency through a series of presentations. This panel discussion will include some of the city's and state's leading authorities on Resiliency. Our speakers will take a quick look into different aspects on how our city, state, and public agencies are preparing for a major earthquake, and how the construction industry can get more involved. We will have 4 short presentations

followed by a chance for the audience to ask questions. This will be an important event for everyone in the AEC community.

June 13, 2017

#### June Chapter Meeting

#### CSI 5th Annual Chili Cook-Off and Awards Night

As the sun starts to sneak out from behind the clouds, our thoughts turn towards our fun summer events. Make sure to mark your calendar, and start working on your chili recipes for our 5th Annual Chili Cook-Off!

Team registration will be opening soon and has limited spaces, so make sure to sign-up as soon as possible!

July 11, 2017

#### July Chapter Meeting

#### Annual Architectural Scavenger Hunt (FREE EVENT!)

Put on your thinking cap, grab the map and the clues, and come test your architectural knowledge! The summer time is also the time for our Annual Architectural Scavenger Hunt, and we are busy hunting down clues to make a fun and challenging trail for you to follow. Brush off your sleuthing skills and save the date for July 12th. This is a free event with a hosted Happy Hour to follow, so spread the word around your office to anyone that is interested in coming to see what Portland CSI is all about!

August 24, 2017

#### 2017 Portland Chapter CSI Golf Tournament at Lewis River

The golf course will be calling your name soon enough, so why not put it on your calendar early? Find your golf mojo and join us for a fun-filled day in the sun and support the CSI scholarship program in the process. Prizes awarded, raffle tickets available, banquet following, and fun for all.

[REGISTER OR SPONSOR HERE >](#)

For more information and registration: [Portland.csinet.org](http://Portland.csinet.org)  
Sponsorship opportunities available! Contact [Ali LaManna](#) for more details.

## CERTIFICATION



## Standard Registration Deadline for the Spring Certificate/Certification Exams

*Cherise Lakeside, CSI, CDT, Certification Chair*

CSI's CDT Certificate and certifications (CCA, CCS, CCPR) are recognized throughout the industry as evidence of a proven level of education, knowledge, and experience in construction documents. These credentials demonstrate professional commitment, credibility and reliability to employers, colleagues, and clients. Bottom line, earning a CSI credential helps you to do your job better. Don't miss this opportunity!

[REGISTER NOW >](#)

Exams will be offered March 27 - June 2 in the US and Canada. This

cycle's standard registration deadline is February 27. The final registration deadline is March 14. [LEARN MORE HERE >](#)

## MEMBERSHIP



## Membership

*Lee Kilbourn, FCSI, Membership Chair*

### Renewed and Emeritus Members November 2016

- Mr. Rod Clark, CSI, CDT; Therma-TRU; member since 2005
- Bill Coady, CSI, CCPR; Guardian Glass; member since 1994
- Mr James Cundiff, CSI; Cundiff Engineering, Inc.; member since 1989
- Artemus DeRosia, CSI, AIA; member since 2006
- Mr. R. Michael Ghiotto, CSI, CCPR; Woodfold; member since 2011
- Ms. Amy Hjelte, CSI, CCS; LRS Architects, Inc.; member since 2002
- Martin Houston, CSI, CDT, AIA, LEED AP; Walsh Construction; member since 2011
- Richard Jermain, CSI, CDT, AHC; Allegion; member since 2004
- Cherise Lakeside, CSI, CDT; Ankrom Moisan Architects; member since 2011
- Alicia LaManna, CSI, CDT; Emerick Construction; member since 2012
- Mr. John Lamb, CSI; Structural Waterproofing Consultants, LLC; member since 1983
- Mr. Raoul Meekoms, CSI; Building Envelope Representatives; member since 1982
- Mr. David Pugh Jr., CSI; Giffin Bolte Jurgens ; member since 2006
- David Schulman, CSI, CDT; Portland Millwork; member since 2013

### Emeritus Members with membership anniversary in November:

- Richard Gira, CSI, Member Emeritus, CDT; member since 1978
- Donald Eggleston, CSI, Member Emeritus; member since 1970

## CSI REGIONAL NEWS



### 2017 RCI Puget Sound Chapter/Portland Branch Meeting & Educational Presentation

We'll be gathering at the Widmer Brothers Brewery & Pub for an evening

of industry networking, the latest updates regarding the Portland Branch to Chapter process, and an important educational topic.

John Sounders, Western Regions Supervisor, Design Services and Project Review with Carlisle Construction Materials, will present on roof wind speed, ASCE 7, uplift rating and warranties - what each offers and how they should be considered.

We hope you will join us! [REGISTER HERE >](#)



When: May 18-20, 2017  
Location: Seattle, Washington  
Hotel: Sheraton-Seattle

AIA credit for educational Sessions to include the following:

1. Revit
2. Construction Management
3. Material Sciences
4. Concrete and hands on demonstrations
5. Estimators
6. NW Day and Sustainability

As well as manufacturer trade shows and tours. More information to follow!

## INDUSTRY NEWS



### Got Code Conflicts?

*Sheldon Wolfe, RA, FCSI, CCS, CCCA, CSC*

Most of you probably are aware of the "Let's fix construction" blog, at [www.letsfixconstruction.com/](http://www.letsfixconstruction.com/).

It occurred to me that, in addition to the communication problems between owner, designer, and contractor, there is an important, underlying problem with the rules of the game. If designers and contractor can't understand what is required by codes, it will become increasingly difficult to just stay in touch with code changes.

If you or your chapter members have examples of code conflicts or inadequacies, please send them to me at [swolfearch@gmail.com](mailto:swolfearch@gmail.com).



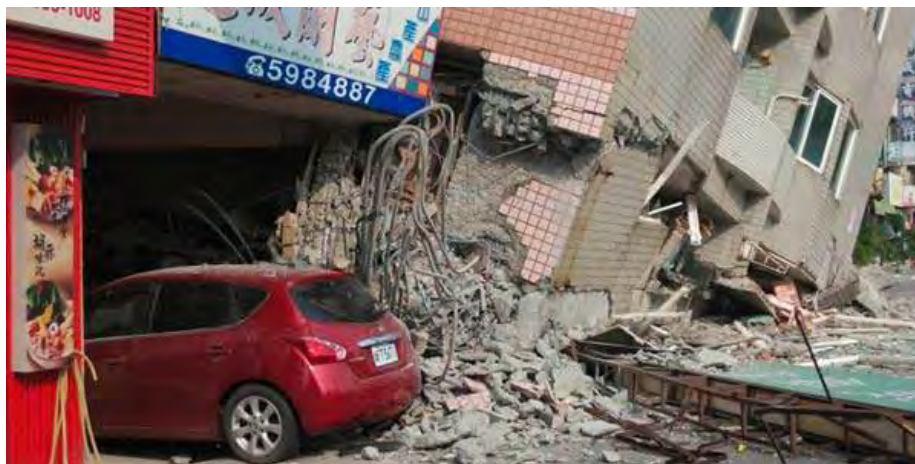
## 2017 Women in Trades Career Fair

Education, Inspiration, and Opportunity for the Future Construction Workforce

Friday, May 19  
School Girls' Day (For students attending with their school)  
8:30 am - 3:00 pm

Saturday, May 20  
Careers For Women Day (Everyone Welcome)  
9:00 am - 3:00 pm

[LEARN MORE & REGISTER HERE >](#)



## EERI 69th Annual Conference

If you are interested in esiliency and want some more information? The Earthquake Engineering Research Institute (EERI) 69th Annual Conference being held in Portland on March 7-10th. The Earthquake Engineering Research Institute is holding their annual conference in Oregon on The Really Big One: Road to Resilience. [LEARN MORE & REGISTER HERE >](#)



For Registration & More Information:  
[uoalumni.com/womeninconstruction](http://uoalumni.com/womeninconstruction)

## Women in Construction: A Conference to Educate & Empower

Thursday, April 27, 2017 from 9A-6P  
White Stag, UofO Building, Portland, OR

This conference is a construction-industry focused event that addresses a range of topics in the construction industry, presented by women and men who support women, with the goal to educate and empower.

[LEARN MORE OR REGISTER HERE >](#)

For more information, please contact Emily Johnson, UO School of Law Portland Program Managing Director at [ejohnso5@uoregon.edu](mailto:ejohnso5@uoregon.edu) or 503-412-0468.



## Helical Design: Code Compliance & Effects of Seismic Activity

You're invited to a V1 accredited live webinar & Lunch-and-Learn hosted by Ram Jack West on Wednesday, March 1st, 2017.

If you've ever wondered how helical anchors hold up in seismic activity, a particular design concern in our area, this event is not to be missed! This is a rare opportunity to interact live with Dr. Cerato, who was awarded the Presidential Early Career Award for Scientists and Engineers (PECASE) at the White House for her work in helping design stronger construction.

After the webinar, industry experts from Ram Jack West will present a one-hour educational seminar on Foundation Solutions for New Construction and Remedial Repair. Participants will gain an understanding of deep foundations and techniques including helical piles, push piles, H-

piles, and grouted micro-piles. We will also cover the use of grouted tie-backs in retaining wall applications and vibratory technology applications for driving H-piles and sheet piling.

[DOWNLOAD FLYER HERE >](#)

CSI's mission is to advance building information management and education of project teams to improve facility performance. We are the only organization that brings together all the players in the built industry.

Portland Chapter CSI, PO Box 6683, Portland, OR 97228

[SafeUnsubscribe™ jlamanna@walshconstruction.com](#)

[Forward this email](#) | [Update Profile](#) | [About our service provider](#)

Sent by [office@portlandcsi.org](mailto:office@portlandcsi.org)





[About](#) | [Join](#) | [Attend](#) | [Contact](#)



VOLUME 57 | ISSUE 4 | **APRIL 2017**

[\*\*Got News?\*\*](#)

## IN THE SPOTLIGHT



### April Chapter Meeting: Resiliency

*Leslie Case, CSI, Publicity Chair*

Tuesday, April 11, 2017  
Elephant's on Corbett  
5221 SW Corbett Ave, Portland, OR 97239

Resilience is your ability to adapt well and recover quickly after stress, adversity, trauma or tragedy. If you have a resilient disposition, you are better able to maintain poise and a healthy level of physical and psychological wellness in the face of life's challenges.

Research suggests that people who are able come up with solutions to a problem are better able to cope with problems than those who cannot. Whenever you encounter a new challenge, make a quick list of some of the potential ways you could solve the problem. Experiment with different strategies and focus on developing a logical way to work through problems. By practicing problem solving skills on a regular basis, you will be better prepared to cope when a serious challenge emerges... and at some point in time we will be faced with a very large and potentially catastrophic challenge - Seismic events or aka "The Big One". CSI



## In this Issue

April Chapter Meeting:  
Resiliency

President's Message:  
Vote to Be Heard

Check out a Podcast  
from Young Architect

Mark Your Calendars

The End to Another  
Successful CDT Class  
Series

Education Committee  
Wants Your Feedback

Learning & Libations  
Still Going Strong

Results from CSI's  
National Election

Spock as a Specifier

ASPE Columbia Pacific  
Chapter May Event:  
Ethics

Call for CANstruction

Portland is offering resiliency training and problem solving approaches in a proactive manner by setting up a highly qualified panel to discuss and answer questions regarding resiliency in the AEC community.

Please join us for CSI Portland's April 11th chapter meeting where we will learn how to quickly recover from life's turbulent reality after the big one hits! [LEARN MORE HERE >](#)

**PANELISTS:**

Carment Merlo, Portland Bureau of Emergency Services  
Richard Steinbrugge, Beaverton School District  
Teri Martin, City Club of Portland

**PRESIDENT'S MESSAGE**



**Vote to Be Heard**

*Ellen Onstad, CSI, Chapter President*

It has been said there are two constants in this life - death and taxes - somehow The April issue of the Predicator it seems appropriate to add a third - voting. We just completed two important ballots for CSI - Did you participate? The first was the Portland chapter to see if you want Ali and I to remain another year as your president elect and president respectively. While we only had about thirty people vote we had an overwhelming support to continue (Thank you!!!) but my question remains, why didn't you vote? The turnout was less than ten percent (please check my math 260 members - ten percent is 26 right?) Anyway; was it difficult to participate? Did you not get the email with instructions? Were they confusing to follow? Did you not have the time? Do you not care? Did you think one little vote would not matter in the whole scheme of things? I know it's not nearly as exciting as the recent National Presidential Election, but it was important to our chapter.

The second ballot was for the national board of CSI. We had the option for Secretary and Directors at Large. Our very own Cherise Lakeside was a candidate - did you vote for her? Did you know? The Northwest Region Director will be on the next national ballot. If you are interested please let one of us know now so we can get you information shortly. The National CSI Ballot was only open from March 7 to March 21st, 2017. Members who were in good standing on Jan. 1, 2017, and who had a valid email address on file with CSI on that date, will be eligible to vote. To ensure your vote, update your contact information and verify your membership standing on your profile on [www.csiresources.org](http://www.csiresources.org) or thru Mr. Lee Kilbourn (Membership Chair) or Jaci Amend (Portland CSI Admin) they may be able to help.

Please make sure your information is current so that you are able to participate in the upcoming Portland Chapter CSI elections. We have a wonderful group of qualified individuals that deserve your time and

Teams

Women in Construction:  
A Conference to Educate  
& Empower

**Upcoming Events**

**April 11**

[April Chapter Meeting Resiliency: How to Prepare for the "Big One"](#)  
Elephant's on Corbett

[Member Orientation](#)  
Elephant's on Corbett

**April 20**

Learning & Libations  
Series: Roofing 301

**April 27**

Women in  
Construction:  
A Conference to  
Educate & Empower

**May 9**

May Chapter Meeting  
CSI Mock Bid

**May 18**

Learning & Libations  
Series: Resilience  
Planning & NIST  
Guidance

**May 18-20**

2017 Bi-Region  
Conference  
Seattle, WA

**May 19-20**

Women in Trades Career  
Fair

**June 13**

[June Chapter Meeting Annual Chili Cook-Off and Awards Night](#)

**June 15**

Learning & Libations  
Series: US Resiliency  
Council Rating System  
Explained

**July 11**

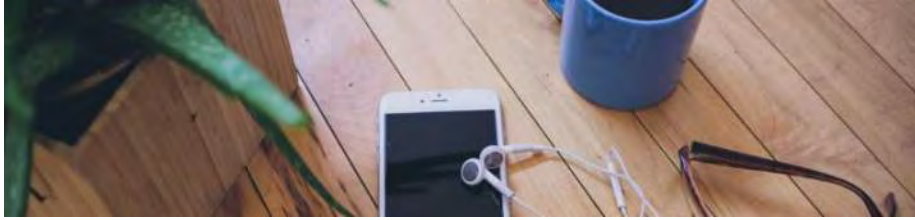
Annual Architectural  
Scavenger Hunt

**July 27**

Learning & Libations  
Series: Let's Fix

consideration. Information and instructions should be released shortly.

## CSI PORTLAND NEWS



### Check out a Podcast from Young Architect

*Leslie Case, CSI, Publicity Chair*

Our own Immediate Past President, Cherise Lakeside had the honor of being interviewed for the Young Architect ([youngarchitect.com](http://youngarchitect.com)) podcast to discuss "Expanding Your Knowledge through CSI and CDT".

[CHECK OUT CHERISE HERE >](#)



## Mark Your Calendars

April 11, 2017

Member Orientation (FREE EVENT)  
4-5 PM at Elephant's on Corbett

[RSVP HERE >](#)

April Chapter Meeting

Resiliency: How to prepare for the "Big One"

This year Portland CSI is taking a closer look into resiliency through a series of presentations. This panel discussion will include some of the city's and state's leading authorities on Resiliency. Our speakers will take a quick look into different aspects on how our city, state, and public agencies are preparing for a major earthquake, and how the construction industry can get more involved. We will have 4 short presentations followed by a chance for the audience to ask questions. This will be an important event for everyone in the AEC community.

[REGISTER HERE >](#)

May 9, 2017

May Chapter Meeting  
CSI Mock Bid

Come learn what it is like to be a general contractor on Bid Day!

June 13, 2017

June Chapter Meeting

CSI 5th Annual Chili Cook-Off and Awards Night

The Annual Chili Cook-Off is the perfect event for all you networking chili-lovers. Whether you want to join the competition as a team with your own chili recipe, or just come to judge your colleague's cooking skills and

Construction Hack-a-Thon (tentative)

**August 24**

[Annual Golf Tournament](#)  
Lewis River Golf Course

**September 12**

September Chapter Meeting  
Portland Building Renovation

**October 10**

October Chapter Meeting  
PSU Viking Pavilion  
Construction Tour

CSI Sponsors

[Support CSI, Learn How Here >](#)

costumes, you are more than welcome. [LEARN MORE HERE >](#)

July 11, 2017

July Chapter Meeting

Annual Architectural Scavenger Hunt (FREE EVENT!)

Put your thinking cap, grab the map and the clues, and come test your architectural knowledge! Happy Hour to follow.

August 24, 2017

2017 Portland Chapter CSI Golf Tournament at Lewis River

The golf course will be calling your name soon enough, so why not put it on your calendar early? Find your golf mojo and join us for a fun-filled day in the sun and support the CSI scholarship program in the process. Prizes awarded, raffle tickets available, banquet following, and fun for all.

[REGISTER OR SPONSOR HERE >](#)

September 12, 2017

September Chapter Meeting

Portland Building Renovation

Come learn from the design team what renovations are going to take place at the iconic Portland Building. Will Portlandia be finding a new home?

October 10, 2017

October Chapter Meeting

Construction Tour of the Viking Pavilion

We had Woofter present on the renovation and expansion project at the PSU Viking Pavilion back in October, and they are back to give us a tour of the construction this coming October!

For more information and registration: [Portland.csinet.org](http://Portland.csinet.org)

Sponsorship opportunities available! Contact [Ali LaManna](#) for more details.

## CERTIFICATION



## The End to Another Successful CDT Class Series

*Cherise Lakeside, CSI, CDT, Certification Chair*

CDT classes have continued during the months of February and March. At the time this newsletter publishes, we will have completed our last class and our candidates will be on the way to their exams. I would like to wish all of our CDT candidates the best of luck and success. You have been a great class and it has been my pleasure to get to know each and every one of you.

Exams will be offered March 27 - June 2 in the US and Canada.

## EDUCATION



## Education Committee Wants Your Feedback

*Jake LaManna, CSI, CDT, Education Chair*

In the coming weeks, the Portland CSI education committee will be requesting our membership's feedback regarding the programming and format of our Learning and Libations Series. Keep your eyes peeled for a survey (we swear it will take less than 10 minutes).



## Learning & Libations Still Going Strong

*Jake LaManna, CSI, CDT, Education Chair*

**Location:** Walsh Construction, 2905 SW First Avenue, Portland, OR 97201, unless otherwise noted

Here is the format, for those of you unfamiliar with our L&L Series:

5:30 PM - Social half hour, pizza and beer

6:00 PM - Presentation, more pizza and beer

7:00 PM - Questions, you get the picture

### April 20th - Roofing 301: Panel Discussion

Panel will consist of Steven McBride (PRC), Marty Houston (Walsh), Rick Gerhts (Snyder), Chris Wayburn (GBD Architects). They will be discussing current issues with the design, specification, and installation of roofing products. Come with questions and an open mind!

### May 18th - Resilience Planning and NIST Guidance

Speaker: Allison Prych, PE, GE, Salus Resilience

Allison will be presenting on Resilience Planning and the guidance provided by the National Institute of Standards and Technology. This presentation will cover how we can work towards putting resilience into overall planning and budgeting efforts.

### June 15th - USRC (U.S. Resiliency Council) Rating System Explained

Speaker: Brian Knight, President WRK Engineers

Brian will provide a detailed look at the United States Resiliency Council (USRC) rating system and why it is valuable to owners to understand how their facility will function in a seismic event and how long it will take to get back up and running. ([www.usrc.org](http://www.usrc.org))

### July 27th (Tentative) - Lets Fix Construction Hack-A-Thon

Speaker: Cherise Lakeside

Issues that permeate typical construction projects will be discussed in a

round-table format. Discussions will "hack" the issue, to find creative solutions to common design and construction issues. This event will be held at the Ankrom Moisan Architects offices in Old Town, downtown Portland.

August - Topic TBD

September - PPI Group - BIM Solutions for Construction  
Speakers: Ian Donovan, Wendy Finch

October 5th - Ideate Applications - Revit Shared Coordinates  
Speaker: Sash Kazeminejad, Ideate, Inc.

November/December - 3rd Annual Ugly Sweater Party



## MEMBERSHIP



## Spring Membership Orientation is Coming Soon

Each year Portland Chapter CSI holds a Member Orientation event in the spring and fall seasons. It is good way for us to meet you and for you to learn about all of the benefits you can take advantage of with your membership. Take this opportunity to meet your Board and Committee Chairs and other officers of the Portland Chapter CSI and receive your new member pin. Join us April 11th from 4-5 PM at Elephant's on Corbett. Then stay for our April Chapter Meeting on Resiliency.

[RSVP HERE >](#)

## CSI NATIONAL NEWS



## Results from CSI's National Election are In!

The 2017 national election has concluded and the following members are elected to serve on the CSI Board of Directors, with terms beginning July 1, 2017. If you'd like to read more about the newly elected members of the Board, please click on the links below to see their candidate profiles.

- Anne Marie Roeper, CSI, CCPR (Secretary)

- **Cherise Lakeside, CSI, CDT (Director-at-Large)**
- Jori Bernat-Lipka Smith, CSI, CDT (Director from the Southwest Region)
- Kirby Davis, CSI, CDT (Director from the South Central Region)
- Alan Itzkowitz, FCSI, CCS, CCCA (Director from the North Central Region)
- Marvin Kemp, CSI, CDT (Director from the Middle Atlantic Region)
- Jack Morgan, CSI, CCS, CCCA (Director from the Great Lakes Region)

## INDUSTRY NEWS



### Spock as a Specifier

*Sheldon Wolfe, RA, FCSI, CCS, CCCA, CSC*

In our never-ending search for truth in specifications, we often lose sight of reality. We're inundated with advertising, product data, test reports, and white papers; where once specifiers complained about a lack of information, we now struggle to keep up with what we receive. We can't know what we don't know, and we have no time to evaluate what we have seen. As if that weren't bad enough, we often find that what we thought we knew isn't true. [READ MORE >](#)

If you or your chapter members have examples of code conflicts or inadequacies, please send them to me at [swolfearch@gmail.com](mailto:swolfearch@gmail.com).



### ASPE Columbia Pacific Chapter May Event: Ethics

ASPE is looking for suggested topics regarding ethics in the industry. A robust discussion will be moderated by former ASPE President, Curt Kolar. Please send as many topics as you like to [kolarc@trimet.org](mailto:kolarc@trimet.org).



## Call for CANstruction Teams

This year, Canstruction is celebrating our 21st Annual Canstruction Design Competition, and we are looking for teams to help make this year a success. Canstruction has been supporting the Oregon Food Bank for the past 20 years; and over those years, we have provided the Food Bank with over a MILLION meals thanks to your continued support. We can't wait to see what we are able to accomplish this year.

This year the event will be in September again, which is Hunger Awareness Month with OFB. The Kick-off is April 25th. Canstruction is a fun and unique charity event where teams build giant structures out of full cans of food. The competition is open to all companies who would like to participate and requires each team to have one company from the A/E/C community.

[DOWNLOAD CALL FOR ENTRY HERE >](#)



## Women in Construction: A Conference to Educate & Empower

Thursday, April 27, 2017 from 9A-6P  
White Stag, UofO Building, Portland, OR

This conference is a construction-industry focused event that addresses a range of topics in the construction industry, presented by women and men who support women, with the goal to educate and empower.

[LEARN MORE OR REGISTER HERE >](#)

For more information, please contact Emily Johnson, UO School of Law Portland Program Managing Director at [ejohnso5@uoregon.edu](mailto:ejohnso5@uoregon.edu) or 503-412-0468.

CSI's mission is to advance building information management and education of project teams to improve facility performance. We are the only organization that brings together all the players in the built industry.



[SafeUnsubscribe™ jlamanna@walshconstruction.com](#)

[Forward this email](#) | [Update Profile](#) | [About our service provider](#)

Sent by [office@portlandcsi.org](mailto:office@portlandcsi.org)



[About](#) | [Join](#) | [Attend](#) | [Contact](#)



VOLUME 57 | ISSUE 5 | **MAY 2017**

[Got News?](#)

IN THE SPOTLIGHT



## May Chapter Meeting: Mock Bid Event

*Alicia LaManna, CSI, Programs Chair*

Tuesday, May 9, 2017 from 5:30-8:30 PM

[EcoTrust Building \(formerly Jean Vollum Natural Capital Center\)](#)

What is it like to be a contractor on Bid Day? Why do they always wait until the last second to turn in their bid? Bidding construction work is a key step in the process to build a building, and if you have not experienced it before, you should not miss out! Come to the CSI Mock Bid at the EcoTrust Building on May 9th. No Experience Required! We'll give you all the instruction you need, and let you learn through active participation. You will review bids from subcontractors, come up with your best number for the project, and try to turn your bid in on time! [REGISTER HERE >](#)

### In this Issue

May Chapter Meeting:  
Mock Bid Event

Chapter Archives Lost in  
Disaster

Mark Your Calendars

Learning & Libations  
Still Going Strong

New & Renewed  
Members

ASHRAE Trivia Night

Oregon Construction  
Liens: A 4-Part Series

Decoding Transparency

Call for CANstruction  
Teams

Understanding  
ANSI/SPRI FM 4435 ES-  
1

CSI PORTLAND NEWS

Upcoming Events



## Chapter Archives Lost in Disaster at Columbia Square

*Jake LaManna, CSI, Board Secretary*

Recently your chapter officers learned our complete set of back issues of *The Predicator*, our chapter Charter, our original Articles of Incorporation, membership records, copies of posters for our annual "Products Fair" (now Industry Forum), and many other items were quickly discarded following a break in a large water main at Columbia Square, home of Melvin Mark Properties and other firms.

Several current and past chapter officers recently each spent several hours sorting a vast collection of materials in order to reduce their volume and make specific items easier to locate. Now all is lost!

Portland Chapter appreciates the past support of the Melvin Mark Organization with memberships and other forms of encouragement toward better construction communications.

Portland Chapter members with archival information are requested to contact Jake LaManna, CSI-EP, Chapter Secretary, with lists of materials in their possession at [jlamanna@walshconstruction.com](mailto:jlamanna@walshconstruction.com). The future will probably be electronic images, with originals being returned to their donors.

*Ps. Past Portland Chapter President and Past Region Director Richard "Dick" Gira, CSI, CDT, wrote an article which was published in The Construction Specifier September 1984. The title was "CSI and Creativity." Gira wrote Lee Kilbourn last year saying he'd given his only copy of the original magazine to a friend to read. Much to Dick's disappointment the friend misplaced it or discarded it by mistake. If anyone has a copy of the September 1984 issue they are asked to let Dick get a copy of the article.*



## Mark Your Calendars

June 13, 2017  
June Chapter Meeting  
CSI 5th Annual Chili Cook-Off and Awards Night

**May 9**  
[May Chapter Meeting: Mock Bid Event](#)  
Ecotrust Building

**May 18**  
Learning & Libations  
Series: Resilience  
Planning & NIST  
Guidance

**May 18-20**  
2017 Bi-Region  
Conference  
Seattle, WA

**May 19-20**  
Women in Trades Career  
Fair

**May 25**  
[Oregon ASHRAE Meeting: Trivia Night](#)

**May 25**  
Portland RCI Meeting:  
Understanding  
ANSI/SPRI FM 4435  
ES-1

**June 13**  
[June Chapter Meeting: Annual Chili Cook-Off and Awards Night](#)

**June 15**  
Learning & Libations  
Series: US Resiliency  
Council Rating System  
Explained

**July 11**  
Annual Architectural  
Scavenger Hunt

**July 27**  
[Learning & Libations Series: Let's Fix Construction Hack-a-Thon](#)

**August 24**  
[CSI Annual Golf Tournament](#)  
Lewis River Golf Course

**September 12**  
September Chapter  
Meeting: Portland  
Building Renovation

**October 10**  
October Chapter Meeting  
PSU Viking Pavilion  
Construction Tour

It's that time of year again when the weather will start getting warmer, we will finally get rid of this rain for a while, and CSI starts having some summer fun! The 5th Annual Chili Cook-Off is coming up on June 13th and if you think you have a killer recipe make sure to sign up soon! Only 8 teams are allowed. Each team gets 4 team member registrations and 5 guest tickets to give to friends and coworkers. Make sure to sign up soon to reserve your spot! Awards will be given out to the Best Chili (judged by our panel of professional chefs), The People's Choice, and Best Team Theme (both judged by the attendees). [LEARN MORE HERE >](#)

## CSI Sponsors

[Support CSI, Learn How Here >](#)

July 11, 2017

### July Chapter Meeting

#### Annual Architectural Scavenger Hunt (FREE EVENT!)

Put your thinking cap, grab the map and the clues, and come test your architectural knowledge! Happy Hour to follow.

August 24, 2017

### 2017 Portland Chapter CSI Golf Tournament at Lewis River

The golf course will be calling your name soon enough, so why not put it on your calendar early? Find your golf mojo and join us for a fun-filled day in the sun and support the CSI scholarship program in the process. Prizes awarded, raffle tickets available, banquet following, and fun for all.

[REGISTER OR SPONSOR HERE >](#)

September 12, 2017

### September Chapter Meeting

#### Portland Building Renovation

Come learn from the design team what renovations are going to take place at the iconic Portland Building. Will Portlandia be finding a new home?

October 10, 2017

### October Chapter Meeting

#### Construction Tour of the Viking Pavilion

We had Woofter present on the renovation and expansion project at the PSU Viking Pavilion back in October, and they are back to give us a tour of the construction this coming October!

For more information and registration: [Portland.csinet.org](http://Portland.csinet.org)  
Sponsorship opportunities available! Contact [Ali LaManna](#) for more details.

## EDUCATION



## Learning & Libations Still Going Strong

*Jake LaManna, CSI, CDT, Education Chair*

**Location:** Walsh Construction, 2905 SW First Avenue, Portland, OR 97201, unless otherwise noted

Here is the format, for those of you unfamiliar with our L&L Series:

5:30 PM - Social half hour, pizza and beer  
6:00 PM - Presentation, more pizza and beer  
7:00 PM - Questions, you get the picture

#### May 18th - Resilience Planning and NIST Guidance

Speaker: Allison Prych, PE, GE, Salus Resilience

Allison will be presenting on Resilience Planning and the guidance provided by the National Institute of Standards and Technology. This presentation will cover how we can work towards putting resilience into overall planning and budgeting efforts.

#### June 15th - USRC (U.S. Resiliency Council) Rating System Explained

Speaker: Brian Knight, President WRK Engineers

Brian will provide a detailed look at the United States Resiliency Council (USRC) rating system and why it is valuable to owners to understand how their facility will function in a seismic event and how long it will take to get back up and running. ([www.usrc.org](http://www.usrc.org))

#### July 27th - Lets Fix Construction Hack-A-Thon

Speaker: Cherise Lakeside

Issues that permeate typical construction projects will be discussed in a round-table format. Discussions will "hack" the issue, to find creative solutions to common design and construction issues. This event will be held at the Ankrom Moisan Architects offices in Old Town, downtown Portland. [REGISTER HERE >](#)

August - Topic TBD

#### September - PPI Group - BIM Solutions for Construction

Speakers: Ian Donovan, Wendy Finch

#### October 5th - Ideate Applications - Revit Shared Coordinates

Speaker: Sash Kazeminejad, Ideate, Inc.

November/December - 3rd Annual Ugly Sweater Party

Sponsored by



## MEMBERSHIP



## New & Renewed Members

Welcome (back) to our members as of December 2016:

- Kean Bacus, CSI, AHC; Stanley Security Solutions; member since 2013

- Mike Baker, CSI; Mutual Materials; member since 1997
- Erica Bitterman-Ryon, CSI; Precision Images; member since 2000
- David Chatburn, CSI; C.R. Laurence Co; member since 2007
- Tim Cockburn, CSI, CDT; Propel Insurance; member since 1991
- Phil Damiano, CSI, AIA, ASHRAE, DBIA; Johnson Air Products; member since 2015
- Colin Doherty, CSI, CCS; Port of Portland; member since 2009
- David Ingraham, CSI; Willamette Graystone; member since 2014
- Clarke Jewell, CSI, CDT; Olympian Precast, Inc.; member since 1999
- Linda Joens, CSI; Cambria; member since 2007
- Katie Kniestadt, CSI, CDT; GBD Architects; member since 2013
- Mike Manzi, RA, CSI, CDT, LEED AP; Bora Architects; member since 2010
- Dan Quatier, CSI; Interior Technology; member since 2015
- Walt Suman, CSI, CDT; TekTerior Systems ; member since 1985
- Toby White, CSI; Forensic Building Consultants; member since 2004

#### And January 2017

- Jeffrey Barr, CSI, CCCA, AIA, NCARB; CASE Forensics; member since 2017 - **NEW**
- Loren Boeckman, CSI; Alliance Window Co. Inc.; member since 2012
- Eric Bressman, CSI, CDT; Ankrom Moisan Architects, Inc.; member since 2012
- Colleen Cameron, CSI; Owens Corning; member since 2007
- James Collins, CSI-S; Student; member since 2017 - **NEW**
- Thaniel Davis, CSI, CDT; Deamor Associates; member since 2015
- Devin Follingstad, CSI, CCCA; Carleton Hart Architecture; member since 2007
- David Grigsby, CSI; ZGF Architects LLP; member since 2012
- Nick Haluschak, PE, CSI, ASCE; Retired; member since 1988
- Russell Harrison, CSI, CDT; Window Tech, Inc.; member since 2014
- Daniel Hegerberg, CSI-EP; Sturgeon Electric Company (MYR Group); member since 2017 - **NEW**
- Patricia Hernandez, CSI; Vetrotech Saint-Gobain; member since 2016
- Alexei Holstein, CSI, CDT, PMP; Siemens; member since 2013
- Jeff Humphreys, CSI, CDT, LEED AP; Group MacKenzie; member since 2004
- Paul Hustedt-Krasnove, CSI; Ankrom Moisan Architects, Inc.; member since 2017 - **NEW**
- Bassam Khalifeh, CSI; Washington County - Facilities; member since 1989
- J. Knott, CSI; Retired Member; member since 1983
- John Kouba, CSI; Malarkey Roofing Products; member since 2001
- Edward Macsisak, CSI; Spacesaver Specialists, Inc.; member since 2005
- Steven McBride, CSI; Professional Roof Consultants, Inc; member since 2002
- Jeff McIntyre, CSI, CDT; Rodda / Cloverdale Paint Company; member since 2006
- Cherie McNabb, CSI, CDT; Forbo Flooring Systems; member since 1993
- Brian McShane, CSI-EP; DeaMor Associates; member since 2017 - **NEW**
- Joseph Mecalis, BA, CSI, CDT; Myhre Group; member since 2007
- Mark Miller, CSI-EP; Skoler Building Resources; member since

2012

- M. Myers, CSI, CCS, AIA; MK Myers; member since 1986
- Jerry Pozo, CSI, CDT, BS, BS, CSI, CDT; BMI Products - A Sika Company; member since 1995
- Mark Reeves, CSI; Hanset Corp.; member since 1999
- Mark Schneider, CSI; CSAF LLC; member since 1997
- Jason Stanfill, CSI-EP, CDT; Miller Paint Co; member since 2016
- Stephanie Tauber, CSI-EP, CDT, LEED GA, NCARB; Ankrom Moisan Architects, Inc.; member since 2016
- Robert Temple, CSI; Hafele America Co.; member since 2012
- Scott Thomas, CSI; Carlisle CCW; member since 2015
- Michael Thrailkill, CSI, CDT, AIA, LEED AP, NCARB; m.thrailkill.architect.llc; member since 2004
- Mitchell "Mitch" Vogt, CSI, AIA, USGBC; CNM Arch. Sales & Services Inc.; member since 2005

Member Emeritus, joined in January of the year indicated:

- John Brockamp, CSI, Mmember Emeritus, member since 1982

## INDUSTRY NEWS



## Trivia Night

*Presented by Oregon ASHRAE Chapter*

Join us for a fun evening of trivia and networking featuring a professional trivia crew, Geeks Who Drink, to deliver a night of general trivia games. No engineering knowledge required! Get your team together and see how you do! Students, families, and non-technical folks encouraged to attend.

Trivia teams should be a maximum of 6 people, and we would love to help students meet professional members by including them in Trivia Teams. If you have space to host one or two students on your team, please click "Yes!" on your registration form. Don't forget to sponsor a student financially if you're able, also available on the registration form!

COST:

- ASHRAE Member - \$40
- Non-Member - \$50
- Student Chapter Member - \$10
- Includes trivia game, appetizers, and 2 drink tickets

AGENDA:

- 5:00 PM - Registration & heavy appetizers served
- 6:30 PM - Announcements

- 7:00 PM - Trivia begins (6 rounds)
- 8:30 PM - Wrap up

[REGISTER HERE >](#)



## Oregon Construction Liens: A 4-Part Series

*Presented by Sussman Shank LLP, Attorneys at Law*

I am taking the opportunity to reach out to you and let you know that our Partner, Bill Fig, in conjunction with the Daily Journal of Commerce, has created a 4-part series on Oregon Construction Liens. This educational presentation has been provided by Bill and others from our firm for many years, and now it is available online at no charge.

[VIEW VIDEO >](#)



## Decoding Transparency: What the Design Community really wants from Your Product

Date: Wednesday, May 10, 2017

Location: Union/Pine, 525 SE Pine Street, Portland, OR 97214

Join the Portland Materials Transparency Collaborative (PMTC), a community of architects, designers and contractors, whose mission is to promote material health and content disclosure in the built environment, for a reverse lunch and learn event. Learn the facts about certifications paths and what really matters. Hear what we want from your products and why. Then we turn the tables; we want to hear from you, product suppliers, vendors, manufacturers, about your barriers to transparency and how we can work together on common goals. This engaging event begins with a cocktail social hour followed by a short presentation and interactive Q&A. [LEARN MORE HERE >](#)





## Call for CANstruction Teams

This year Canstruction is celebrating our 21st Annual Canstruction Design Competition and we are looking for teams to help make this year a success. Canstruction has been supporting the Oregon Food Bank (OFB) for the past 20 years, and over those years, we have provided the Food Bank with over a MILLION meals thanks to your continued support. We can't wait to see what we are able to accomplish this year. This year the event will be in September--Hunger Awareness Month--with OFB.

The Kick-Off Meeting will be Tuesday, April 25th from 5:30 pm to 6:30 pm at DOWA-IBI Group office in downtown Portland (see below for the address). Light snacks and drinks will be provided. We will be giving an overview of the competition, timeline of submittals, and the update rules and regulations. Also, the Oregon Food Bank will give us an update on the state of hunger in Oregon and their impact. We encourage veteran and newbies to join us at the meeting. It is a great way to network and get excited about the competition this year.

If your company or organization would like to participate in the 2017 event, please contact Chris Mount at [info@canstructionpdx.org](mailto:info@canstructionpdx.org). The Canstruction Competition is open to all companies which would like to participate. Each team must have one company from the A/E/C community. We encourage companies to team up with other organizations and companies for this event and we are available to assist you in finding additional companies for your team.

Remember space is limited, so get your Call for Entry in now. Please RSVP if you are coming to the meeting to [info@canstructionpdx.org](mailto:info@canstructionpdx.org).

## Understanding ANSI/SPRI FM 4435 ES-1

*Presented by Portland Chapter RCI*

Date: Thursday, May 25, 2017 from 5:30-8:00 PM

Location: Widmer Brothers Brewery & Pub, 929 N Russell, Portland, 97227

We are pleased to invite you to attend the second of the 2017 Meeting & Educational Presentations, and this time we're able to officially say hosted by the Portland Chapter of RCI.

We'll be gathering at the Widmer Brothers Brewery & Pub for an evening of industry networking and a presentation on Understanding ANSI/SPRI FM 4435 ES-1 by Myles Sosnoff, NW Central Regional Business Development Manager for Metal Era. We hope you will join us!

[REGISTER HERE >](#)

CSI's mission is to advance building information management and education of project teams to improve facility performance. We are the only organization that brings together all the players in the built industry.

Portland Chapter CSI, PO Box 6683, Portland, OR 97228

[SafeUnsubscribe™ ilamanna@walshconstruction.com](#)

[Forward this email](#) | [Update Profile](#) | [About our service provider](#)

Sent by [office@portlandcsi.org](mailto:office@portlandcsi.org)



[About](#) | [Join](#) | [Attend](#) | [Contact](#)



VOLUME 57 | ISSUE 6 | **JUNE 2017**

**Got News?**

IN THE SPOTLIGHT



## June Chapter Meeting: Annual Chili Cook-Off and Awards Night

*Alicia LaManna, CSI, Programs Chair*

Tuesday, June 13, 2017 from 5:30-8:30 PM  
Portland Brewing Company, Highland Room  
2730 NW 31st, Portland, OR 97210  
Cost: \$10 CSI Member / \$15 Non-member

It's that time of year again when the weather will start getting warmer, we will finally get rid of this rain for a while, and CSI starts having some summer fun! The 5th Annual Chili Cook-Off is coming up on June 13th and if you think you have a killer recipe make sure to sign up soon! Only 3 team spots are left. Each team gets 4 team member registrations and 5 guest tickets to give to friends and coworkers. Make sure to sign up soon to reserve your spot! Awards will be given out to the Best Chili (judged by our panel of professional chefs), The People's Choice, and Best Team Theme (both judged by the attendees).

Not much of a chef? Sign up to attend the event and be a judge! It is a

### In this Issue

May Chapter Meeting:  
Mock Bid Event

President's Message: Do  
You Feel Heard?

May Chapter Meeting:  
Mock Bid Event

May Chapter Meeting  
Recap

Mark Your Calendars

Learning & Libations  
Still Going Strong

In Memorium: H. Curtis  
Finch

New & Renewed  
Members

Small Brush with Fame

### Upcoming Events

**June 13**  
[June Chapter Meeting:](#)

great event for networking, trying some great chili recipes, sipping on cold craft beer, and celebrating some of our amazing volunteers.

[LEARN MORE HERE >](#)

## PRESIDENT'S MESSAGE



### President's Message: Do You Feel Heard?

*Ellen Onstad, CSI, Chapter President (2016-2018)*

Hopefully your CSI membership is more than yearly taxes or an obligation. It is a value you receive when you join and get involved. My question to you is where do you want to see our chapter in the next five years, ten years, next year?

Each year at the end of June, the board of directors has a planning meeting where we say farewell to some board members and welcome the newbies to our ranks. Luckily, it is not goodbye; because the three members whose terms expire on June 30th will continue to be valuable volunteers with the Chapter.

- Tony Divincenzo has agreed to remain as chair of the Industry Forum Committee
- Hopefully Leslie Case will continue with the Publicity Committee (if her new position allows it), and
- Marty Houston, with his depth of knowledge working with BEC, RCI, AIA and others will remain chair of Strategic Partner Committee.

We are lucky to include such hard working members in our ranks.

Our three new board members have jumped in with both feet.

- Randy Page has already been active with the Industry Forum Committee, gathering sponsorships and supporting the team,
- Michael Wilson has attended a Programs Committee meeting, and if memory serves, he has volunteered to help plan upcoming meetings.
- Jenn Thomas was involved with the Education Committee before becoming a board director. She has helped put together some of the Learning and Libations series and was instrumental in the April Program on Resiliency and will continue in this capacity.

What is great fun for me as the president is witnessing the three members that joined the board last year take to their roles and continue to grow into the new leadership positions.

- Kourtney Strong has taken a more active role in the Programs Committee, and if things go as they should, will become chair once Ali moves from this role to Chapter President in July 2018.
- Geoff Jenks, while changing jobs and getting married has agreed to stay on as Emerging Professionals Chair. He has some exciting

[Annual Chili Cook-Off and Awards Night](#)

#### June 15

Learning & Libations  
Series: US Resiliency  
Council Rating System  
Explained

#### July 11

Annual Architectural  
Scavenger Hunt

#### July 27

[Learning & Libations](#)  
Series: [Let's Fix](#)  
[Construction Hack-a-](#)  
[Thon](#)

#### August 24

[CSI Annual Golf](#)  
[Tournament](#)  
Lewis River Golf Course

#### September 12

September Chapter  
Meeting: Portland  
Building Renovation

#### October 10

October Chapter Meeting  
PSU Viking Pavilion  
Construction Tour

CSI Sponsors

[Support CSI, Learn](#)  
[How Here >](#)

ideas for the coming year.

- **Alexei Holstein** seems to be involved in many committees, which is a very good thing. He started in education with Cherise, then has taken over as co-chair for Industry Forum, and has been instrumental in our joint meetings with ASHRAE Oregon.

Past, present and future, without those three elements of knowledge we would not see where this industry is headed, how we can educate, and how we can bring Portland Chapter CSI into the next millennium.

## CSI PORTLAND NEWS



## 2017 Industry Forum Recap Technology: Matter to Light

*Tony Divincenzo, CSI, Industry Forum Chair*

Over 250 design professionals attended this year's Industry Forum in March to visit with vendors, network with peers, listen to the innovative 5 x 10 presentations, and were delighted by an inspiring keynote from Michael Rotundi of ROTO Architecture. Held at the Portland Art Museum's Kridel Ballroom, the Industry Forum continues to be one of Portland's most well-received design events. The unique nature of IF melts together local architects, engineers, general contractors, and owners with product representatives, local universities, CSI and AIA Portland chapter members.

The diversity of IF continues to grow. This year, attendees had an opportunity to participate in a variety of activities--speed education with AIA Portland, 5 x 10 presentations including local university students, networking with peers, visiting with over 34 vendors, and our keynote presentation.

The Portland Chapter of CSI extends a special thank to Interior Technology as our event sponsor and AIA Portland for hosting the speed education portion of the event.

Thank you to all sponsors:



## May Chapter Meeting Recap: Mock Bid Event

The Bids are In! We had a great time at our CSI Mock Bid last month. Five teams competed against each other to get low bid, and everyone learned what it is like to be a general contractor on bid day. If you haven't gotten a chance to participate, make sure to keep an eye out for another mock bid sometime in the near future.



## Mark Your Calendars

July 11, 2017

July Chapter Meeting

Annual Architectural Scavenger Hunt (FREE EVENT!)

Put your thinking cap, grab the map and the clues, and come test your architectural knowledge! Happy Hour to follow.

August 24, 2017

2017 Portland Chapter CSI Golf Tournament at Lewis River

The golf course will be calling your name soon enough, so why not put it on your calendar early? Find your golf mojo and join us for a fun-filled day in the sun and support the CSI scholarship program in the process. Prizes awarded, raffle tickets available, banquet following, and fun for all.

[REGISTER OR SPONSOR HERE >](#)

September 12, 2017

September Chapter Meeting

Portland Building Renovation

Come learn from the design team what renovations are going to take

place at the iconic Portland Building. Will Portlandia be finding a new home?

October 10, 2017

October Chapter Meeting

Construction Tour of the Viking Pavilion

We had Woofter present on the renovation and expansion project at the PSU Viking Pavilion back in October, and they are back to give us a tour of the construction this coming October!

For more information and registration: [Portland.csinet.org](http://Portland.csinet.org)

Sponsorship opportunities available! Contact [Ali LaManna](#) for more details.

## EDUCATION



### Learning & Libations Still Going Strong

*Jake LaManna, CSI, CDT, Education Chair*

**Location:** Walsh Construction, 2905 SW First Avenue, Portland, OR 97201, unless otherwise noted

Here is the format, for those of you unfamiliar with our L&L Series:

5:30 PM - Social half hour, pizza and beer

6:00 PM - Presentation, more pizza and beer

7:00 PM - Questions, you get the picture

#### June 15th - USRC (U.S. Resiliency Council) Rating System Explained

Speaker: Brian Knight, President WRK Engineers

Brian will provide a detailed look at the United States Resiliency Council (USRC) rating system and why it is valuable to owners to understand how their facility will function in a seismic event and how long it will take to get back up and running. ([www.usrc.org](http://www.usrc.org))

#### July 27th - Lets Fix Construction Hack-A-Thon

Speaker: Cherise Lakeside

Issues that permeate typical construction projects will be discussed in a round-table format. Discussions will "hack" the issue, to find creative solutions to common design and construction issues. This event will be held at the Ankrum Moisan Architects offices in Old Town, downtown Portland. [REGISTER HERE >](#)

August - Topic TBD

#### September - PPI Group - BIM Solutions for Construction

Speakers: Ian Donovan, Wendy Finch

#### October 5th - Ideate Applications - Revit Shared Coordinates

Speaker: Sash Kazeminejad, Ideate, Inc.

November/December - 3rd Annual Ugly Sweater Party



## MEMBERSHIP



### In Memorium: H. Curtis Finch, CSI, FAIA

I am sad to report the obituary for Mr. H. Curtis Finch was in the Sunday Oregonian on April 30, 2017. Mr. Finch died on April 22, 2017 at the age of 90 years old. He joined CSI in 1978 and served as president of Portland CSI in 1988. He received the President's Award in 1986 and 1987 for his work on our Programs Committee.



### New & Renewed Members

Welcome (back) to our members as of February 2017:

- Christopher Bennett, CSI, CDT, AIA; Tao Group, LLC; member since 2014
- Brian Carleton, CSI; Carleton Hart Architecture, PC; member since 1995
- William Clark Jr., CSI, CDT; Wm. Clark and Associates, LLC; member since 1991
- Bryce Given, CSI; Guardian Glass; member since 2017 - **NEW**
- Devin Graham, BA, CSI-EP, CDT, LEED GA; Oh Planning+Design; member since 2016
- Stephen Haner, CSI; Mid -Valley Glass and Millwork; member since 2007
- Alexander Lungershausen, CSI, CCS, AIA, LEED AP; Hennebery Eddy Architects; member since 2003
- Scott Martin, CSI, CDT, LEED GA; Tremco Inc. Vulkem Paraseal; member since 1995
- Karl Michels, CSI; Knaf insulation; member since 2014
- Jim Mitchell, CSI, USGBC; Koroseal Interior Products Group; member since 1992
- Ron Ogden, CSI; R. J. Ogden Associates, Inc.; member since 1986
- Russell Pitkin, RA, CSI, CDT, AIA, LEED AP; SERA Architects;



- member since 2004
- Tim Shinnars, CSI; Da-Lite Screen Company; member since 2007
- David Stephenson, CSI, AIA, LEED AP; SERA Architects; member since 2007
- Kourtney Strong, CSI, AIA, NCARB; LSW Architects; member since 2014
- Randy Tessman, CPA, CSI, CDT; Benjamin Moore Paints; member since 1995
- Jennifer Thomas, CSI; Modulus Consulting; member since 2017
- Ramona White, CSI; PAE Engineers; member since 2016
- Susan Williams, CSI; PPG Paints; member since 2017- **NEW**

#### Members Emeritus with February Anniversary Dates:

- Kenneth Nelson, CSI, Member Emeritus, CDT; member since 1971
- Les Seeley, CSI, Member Emeritus; member since 1977
- Robert Easton, CSI, Member Emeritus, CDT; member since 1992
- Isaac Tevet, CSI, Member Emeritus, AIA; member since 1989

#### INDUSTRY NEWS



#### Small Brush with Fame

Sheldon Wolfe, RA, FCSI, CCS, CCCA, CSC

One of the most treasured awards I received from CSI is the Ben John Small Memorial Award. First presented in 1996, and limited to one per year, only eleven people have received this award. The award, originally intended "to honor those who have achieved outstanding stature and proficiency as specifiers," is named after Ben John Small, charter member and president of the Metropolitan New York Chapter. Ben was well known as an educator; he was a frequent lecturer at Columbia University, Princeton University, the Massachusetts Institute of Technology, and the Virginia Polytechnic Institute. [READ MORE HERE >](#)

CSI's mission is to advance building information management and education of project teams to improve facility performance. We are the only organization that brings together all the players in the built industry.

Portland Chapter CSI, PO Box 6683, Portland, OR 97228

[SafeUnsubscribe™](#) [ilamanna@walshconstruction.com](mailto:ilamanna@walshconstruction.com)

[Forward this email](#) | [Update Profile](#) | [About our service provider](#)

Sent by [office@portlandcsi.org](mailto:office@portlandcsi.org)



[About](#) | [Join](#) | [Attend](#) | [Contact](#)



VOLUME 57 | ISSUE 7 | **JULY 2017**

[\*\*Got News?\*\*](#)

IN THE SPOTLIGHT



## Portland CSI Annual Golf Tournament

Erica Bitterman-Ryon, CSI, Golf Chair

Ready for some fun? It is time for golfers, sponsors, and people that just like to chill in the sun to register for our Annual CSI Golf Tournament. FORE! This "Pesky Blonde" is back, and we all need to be thinking golf. It is only a month away, and it will sneak up on us before we know it. ☐

I greatly appreciate your support and participation (some of you for many many years--YOU'RE ROCK STARS). I could not do this event without you, and I so hope you have a great time every year and that is what makes you come back for more of my craziness.

Please see the CSI web site for registration on teams and for sponsorships. You can send me a check, call me with credit card or go online to <http://portland.csinet.org> and look for the "2017 Portland Chapter CSI Golf Tournament" under events which will let you register and pay online.

### In this Issue

Portland CSI Annual Golf Tournament

June Chapter Meeting Recap

Mark Your Calendars

Save the Date: Industry Forum 2018

Portland CSI Annual Awards

Learning & Libations

Registration is Now Open for Fall Certification

Institute and Portland Chapter CSI Dues Increase

Update from CSI National

New & Renewed Members

CANstruction in Need of

## MANY THANKS TO OUR PARTICIPANTS FOR 2017

- NW Wall and Ceiling Bureau - Tea Box
- Ameriprise Financial Services - Tea Box sponsor
- Airefco, Co. - Tea Box Sponsor & 2 team
- Professional Roof Consultants - tee box, hole in one sponsor & four teams
- JLD Construction Consulting - Game hole sponsor
- Willamette Graystone - Game hole & Team Sponsor
- Ideate - Tee Box Sponsor
- Ankrom Moisan Architects - Game hole sponsor
- John Lape Architects - team Sponsor
- Hoffman Construction - Team Sponsor
- BORAL Stone Products - Tee Box Sponsor
- Vitro Architectural Glass - Tee Box Sponsor
- Knaufl Insulation - Team Sponsor
- Window Tech - Team Sponsor
- Deamor Associate - Bronze Sponsor & Team
- Faustrollean Fixture Co. - Tee box & team
- Firestone Building Products - Tee Box & Team
- Mutual Materials - Tee Box & Team
- Fortifiber - Tee Box
- Dormakaba - Tee Box & Team
- Schindler Elevator - Tee Box & Team
- Doge Data - Game Hole
- Siemens - Driving Range & Team
- PKA Architects - Team

## CSI PORTLAND NEWS



## June Chapter Meeting Recap: Chili Cook-Off and Awards Night

Alicia LaManna, CSI, CDT, Programs Co-Chair

The Kitchen was HOT in June! There was some fierce competition at the Chili Cook-Off this year. We had five teams that really stepped-up the chili recipes and costume design. We had all new winners this year.

- The Emerging Professionals Team Masquerade stole the best team theme from the last year's winner Team Window Tech Big Top.
- The Guardian Glass/Precision Images Team Firehawks stole the People Choice Award.
- I don't know if it's because the event organizer, Tim Cockburn, was on the team, but Propel Insurance True Grit got to take home the bragging rights and big trophy, taking it from last year's winner Pac Mat Killa Ya Chili.

A lot of fun was had by all. The beer at Portland Brewing was a perfect complement to the hot chili. Can't wait to see what everyone comes up

## Sponsors

## Upcoming Events

### July 11

July Chapter Meeting:  
[Annual Architectural Scavenger Hunt](#)

### July 27

[Learning & Libations Series: Let's Fix Construction Hack-a-Thon](#)

### August 24

[CSI Annual Golf Tournament](#)  
Lewis River Golf Course

### September 11-17

CANstruction

### September 12

September Chapter Meeting: Portland Building Renovation

### October 5

Learning & Libations Series: Ideate Applications

### October 10

October Chapter Meeting  
PSU Viking Pavilion  
Construction Tour

### 2018

### March 8

Industry Forum 2018

## CSI Sponsors

[Support CSI, Learn How Here >](#)

with next year! If you missed it, make sure to check out the [photos!](#)

## Mark Your Calendars

July 11, 2017

July Chapter Meeting

Annual Architectural Scavenger Hunt (FREE EVENT!)

Put your thinking cap, grab the map and the clues, and come test your architectural knowledge! Happy Hour to follow.

August 24, 2017

2017 Portland Chapter CSI Golf Tournament at Lewis River

The golf course will be calling your name soon enough, so why not put it on your calendar early? Find your golf mojo and join us for a fun-filled day in the sun and support the CSI scholarship program in the process. Prizes awarded, raffle tickets available, banquet following, and fun for all.

[REGISTER OR SPONSOR HERE >](#)

September 12, 2017

September Chapter Meeting

Portland Building Renovation

Come learn from the design team what renovations are going to take place at the iconic Portland Building. Will Portlandia be finding a new home?

October 10, 2017

October Chapter Meeting

Construction Tour of the Viking Pavilion

We had Woofter present on the renovation and expansion project at the PSU Viking Pavilion back in October, and they are back to give us a tour of the construction this coming October!

For more information and registration: [Portland.csinet.org](http://Portland.csinet.org)

Sponsorship opportunities available! Contact [Ali LaManna](#) for more details.

## INDUSTRY FORUM

### Save the Date: Industry Forum 2018

*Tony Divincenzo, CSI, Industry Forum Chair*

Announcing Industry Forum 2018!! Thursday, March 8th at Portland Art Museum Kridel Ballroom.

CSI's Industry Forum is pleased to welcome [Allison G. Williams](#) of [AW Ink](#) as our Keynote Speaker for Industry Forum 2018.

Allison spent time working with AECOM, Perkins+Will, Skidmore Owens & Merrill before establishing AW Ink in San Francisco. A Masters of Arts graduate of University of California Berkeley, Allison has been recognized with "Progressive Architecture Award", R&D Laboratory of the Year Award', and 'Emerson Award of Sustainability'.

Her experiences in speaking at Design with a Conscience , International Women's Forum (San Francisco), and International Women's Forum - World Conference (Pittsburgh PA) will bring an engaging and inspiring keynote to Portland. We're excited to hear Allison's unique view of architecture and practice.

## AWARDS

### Portland CSI Annual Awards

*Ellen Onstad, CSI, Board President*

It is not often that you can give your dad an award. My sister and I never did the World's Best Dad mug or tie or make a big deal about Father's Day. We never knew that his work in AIA and CSI was anything special. The CSI National Conventions were only a place we went on vacation, knowing that it had a fun kid program, it was something to look forward too, not something that was considered work. And Now over 40 years later, dad is still involved and I am President of Portland Chapter CSI.

In honor of your fatherly love, support, guidance, knowledge, proof reading, sounding board, interaction with Institute on behalf of the members, continuation as Membership Chair, and countless volunteer hours, it is my pleasure to Award Lee F Kilbourn FCSI, FAIA this Presidents Certificate of Appreciation, on this 13th day of June, 2017. However instead of giving you yet another plaque to hang on your wall, it is my honor to give you a picture of your great granddaughter, Stella Jean Gillette. [DOWNLOAD THE FULL LIST OF AWARDS HERE >](#)

## EDUCATION



### Learning & Libations Still Going Strong

*Jake LaManna, CSI, CDT, Education Chair*

Here is the format, for those of you unfamiliar with our L&L Series:

5:30 PM - Social half hour, pizza and beer

6:00 PM - Presentation, more pizza and beer

7:00 PM - Questions, you get the picture

#### July 27th - Lets Fix Construction Hack-A-Thon

Speaker: Cherise Lakeside

Location: Ankrom Moisan Architects, 38 NW Davis, Suite 300, Portland  
Issues that permeate typical construction projects will be discussed in a round-table format. Discussions will "hack" the issue, to find creative solutions to common design and construction issues. This event will be held at the Ankrom Moisan Architects offices in Old Town, downtown Portland. [REGISTER HERE >](#)

August - Topic TBD

#### September - PPI Group - BIM Solutions for Construction

Speakers: Ian Donovan, Wendy Finch

Location: Walsh Construction, 2905 SW First Ave., Portland

#### October 5th - Ideate Applications - Revit Shared Coordinates

Speaker: Sash Kazeminejad, Ideate, Inc.

Location: Walsh Construction, 2905 SW First Ave., Portland

November/December - 3rd Annual Ugly Sweater Party  
Location: TBD



## CERTIFICATION



### Registration is Now Open for Fall Certification

Registration is now open for the Fall 2017 certificate/certification exam cycle. Exams will be offered September 25 - December 10, 2017 in the U.S. and Canada. The CDT is also offered internationally. For candidates in Africa, Europe and the Middle East, visit: CDT International Exam. The early registration deadline is Friday, July 14. Register now and save!

CSI is the construction community's authority on communication and construction documentation. Through CSI's Certificate/Certification Program, you can develop a conceptual understanding of the entire construction process and concrete skills in:

- Construction documentation development and administration
- Specification writing and enforcement
- Product research and sourcing
- Communication with the design and contracting teams

CSI's Construction Documents Technologist (CDT) certificate is a prerequisite to CSI's Certifications: Certified Construction Contract Administrator (CCCA); Certified Construction Specifier (CCS) and Certified Construction Product Representative (CCPR).

CSI's CDT Certificate and advanced certifications are recognized throughout the industry as evidence of a proven level of education, knowledge and experience in construction documents. These credentials demonstrate professional commitment, credibility and reliability to employers, colleagues and clients.

Register by July 14 and receive a discounted registration rate. Register now, and make this the year you earn your CSI credential!

Not a member of CSI? Join now and save on your exam registration and study tools.

## MEMBERSHIP

# Institute and Portland Chapter CSI Dues Increases Starting July 1, 2017

## Decennial Chapter Membership Dues Increase

It is my solemn duty as Chapter Secretary to report the decennial (can you believe there's a term for once per decade?) chapter membership dues increase. Our dues, for the better part of the last decade, have been \$60 per year. In order to compensate for chapter operating costs and total membership numbers, the Board deemed it necessary to increase our dues to \$75 annually. "This means that for the cost of ½ a tall latte or the cost of ¼ venti caramel macchiato or peppermint mocha a month, you can help support our growing chapter's needs (copyright OPB membership drive\*)".

The \$15 increase (\$1.25 per month) to \$75 per year will take effect July 1, 2017. Remember, that by choosing to remain a member of one of the nation's largest CSI Chapters, you give yourself access to one of the largest networks of experienced project delivery and specification writing individuals, in the nation. Not to mention, you receive reduced pricing for attending our top rate programs offerings, including Industry Forum and our monthly programs meetings and building tours. Any questions can be directed to the Portland CSI Board at [office@portlandcsi.org](mailto:office@portlandcsi.org).

\*This increase is actually half the cost of an annual OPB Membership donation. And it's not really copyrighted by OPB, but it should be, right?

Join now by going to [www.csiresources.org](http://www.csiresources.org). Your choices are three:

- \$350 - become a Professional Member in the Portland Chapter: You are a technically experienced individual whose primary function is to author, manage or communicate building information; to create, interpret or use construction documents; or to educate, support, or assist the construction industry.
- \$180 - become an Emerging Professional Member in the Portland Chapter: You are an individual who has less than three years' experience in any construction-related field and are a prospective Professional member.
- \$55 - become a Student Member in the Portland Chapter: You are a full-time student enrolled in an undergraduate or graduate program in a construction industry curriculum at an educational institution.



## Update from CSI National (Society)

CSI is hard at work, creating an environment to enable members to realize their full professional potential. Chapters are an essential part of delivering on that promise. What follows is a brief update about some recent achievements, FY18 dues, and a hint at what's to come.

### Communities and CSiresources.org

The launch of the new [CSiresources.org](http://CSiresources.org) and online communities (CSI-Connect) offers members new ways to engage with each other. We're

seeing consistent growth and daily activity in CSI-Connect; asking hard questions, sharing technical information, and members just getting to know each other.

Accurate member information is the key to clear, consistent communication and delivery of benefits. Please encourage members to update their profiles on CSIresources.org so we can better serve them and provide you more accurate information.

### Member Rosters, Chapter Dues and RAP Payments

CSI is working diligently to clean up hundreds of thousands of records within the database to improve accuracy and reliability of member information. This project will positively impact member rosters, certification tracking, and fundamental member services. Related to this, it is no secret that chapter rosters and related reporting related to chapter dues and RAP payments have been-politely put-problematic. While we've made progress to improve consistency, the underlying business rules and supporting technology are irretrievably broken. To fix these issues, CSI is implementing a new accounting system and approaches to improve reporting and streamline payment processing. These systems are to be implemented in stages between July and September, and we will keep you informed as things progress.

## New & Renewed Members

Renewing Members in March 2017 and Members Emeritus with March anniversary dates:

- Bryan Ackler, CSI; member since 2012
- Mark Barney, CSI, CDT, AHC; Northwest Hardware Consultants; member since 2002
- Heidi Bertman, CSI, AIA, LEED AP, M. Arch, NCARB; Hennebery Eddy Architects; member since 2014
- Jason Chupp, CSI; Swinerton Builders; member since 2013
- Timothy Clem, CSI, CDT, AIA, LEED AP, NCARB; PKA Architects; member since 2002
- Joshua Guerra, RA, CSI, CDT; OTAK, Inc.; member since 2016
- Clifford Hood, PE, CSI; Hood-McNees, Inc.; member since 1996
- John Lape, FCSI, CCS, AIA, CSC; John Lape, Architect; member since 1986
- Richard Manning, CSI; Green Building Services, Inc.; member since 2016
- Ken McKinney, CSI, AIA, NCARB; International Masonry Institute; member since 2016
- Mike Murphy, CSI, CCPR; Behr Process Corp.; member since 2006
- Ellen Onstad, CSI, CDT; Dodge Data & Analytics; member since 1995
- Bo Oswald, CSI; Essex General Construction; member since 2015
- Adam Owens, CSI-EP; Akzo Nobel Powder Coatings; member since 2015
- Brian Ross, CSI, CCS; member since 2013
- Anna Todd, CSI, LEED AP; Todd Construction, Inc.; member since 2012
- Christopher Veit, CSI, CCS; Carlson/Veit Architects, P.C.; member since 1983

Members emeritus with March Anniversary Dates:

- Robert Klas, CSI, Member Emeritus; member since 1974
- Stanley Nelson, CSI, CDT Member Emeritus, member since 1975



## CANstruction in Need of Sponsors

Kim Moffat, CDFA, Dull Olson Weekes - IBI Architects, Inc.

Canstruction Portland is celebrating its 21st year in the fight against hunger! This event uniquely shows Portland residents and business members that the community of architects, engineers, contractors and construction companies care about the hunger insecure in our city.

Each month 270,000 people receive food assistance from a pantry through the Oregon Food Bank Network, and an astonishing 92,000 of those are children. That's enough to fill the Moda Center 15 times!

Canstruction is an international competition wherein teams of employees from design and construction firms compete to build giant structures made entirely out of full cans of food, which all gets donated to Oregon Food Bank. The teams' structures are displayed to the public for a week at Pioneer Place in Downtown Portland from September 11-17, 2017.

Our goal for 2017 is to raise 60,000 meals to help feed those struggling with food insecurity in our community. We are asking for your assistance as a sponsor to help us grow Canstruction and fight hunger. Canstruction isn't just a charity; it's a community event. Being a sponsor is easy; just choose the level of positive exposure you would like to receive from the Menu of Giving sponsorship packet attached. No amount is too small.

Please check out our NEW website for Canstruction Portland at [www.canstructionPDX.org](http://www.canstructionPDX.org)!

CSI's mission is to advance building information management and education of project teams to improve facility performance. We are the only organization that brings together all the players in the built industry.

Portland Chapter CSI, PO Box 6683, Portland, OR 97228

[SafeUnsubscribe™ ilamanna@walshconstruction.com](mailto:ilamanna@walshconstruction.com)

[Forward this email](#) | [Update Profile](#) | [About our service provider](#)

Sent by [office@portlandcsi.org](mailto:office@portlandcsi.org)



[About](#) | [Join](#) | [Attend](#) | [Contact](#)



VOLUME 57 | ISSUE 8 | **AUGUST 2017**

[\*\*Got News?\*\*](#)

IN THE SPOTLIGHT



### In this Issue

June Chapter Meeting Recap

Portland CSI Annual Golf Tournament

Mark Your Calendars

Learning & Libations

Update from CSI National

New & Renewed Members

## September Chapter Meeting: The Portland Building Renovating a Landmark

Kourtney Strong, CSI, CDT, Programs Co-Chair

Tuesday, September 12, 2017

5:30 - 8:00 PM

Elephant's on Corbett

The Portland Building, designed by Michael Graves and built in 1982 as administrative offices for the City of Portland, is an award-winning design of Post Modern architecture. The building was later placed on the National Register of Historic Places as a building of "exceptional importance," but it currently faces problems with its structure, exterior, and operational

### Upcoming Events

**August 24**  
[CSI Annual Golf Tournament](#)  
Lewis River Golf Course

**September 11-17**  
CANstruction

**September 12**  
[September Chapter](#)

systems that repairs alone cannot address. To protect and preserve this major public investment, the City has initiated a \$195 million project to reconstruct the Portland Building by the end of 2020. The City will create an adaptable building that will last 50-100 years, providing a productive work environment for employees and a welcoming space for community members.

Members of the Portland Building Project Team will present a design update on the project with a special focus on the complexity of the exterior enclosure design. The team will discuss how the exterior design solution responds to the building's status as an important Landmark in the City of Portland while solving the technical deficiencies that have plagued the building since its construction. [LEARN MORE >](#)

## PRESIDENT'S MESSAGE



### President's Message:

Ellen Onstad, CSI, CDT, Board President

Five hundred twenty-five thousand six hundred minutes - How do you measure the life of a woman or a man? Has it really been a year since I took the reigns as Portland Chapter CSI President? I know I have said this before but the year has flown by, and I fully expect the next one to as well. Some highlights include. [READ MORE >](#)

## CSI PORTLAND NEWS



### Portland CSI Annual Golf Tournament

Erica Bitterman-Ryon, CSI, Golf Chair

Ready for some fun? It is time for golfers, sponsors, and people that just like to chill in the sun to register for our Annual CSI Golf Tournament. FORE! This "Pesky Blonde" is back, and we all need to be thinking golf. It is only a month away, and it will sneak up on us before we know it. ☐

I greatly appreciate your support and participation (some of you for many many years--YOU'RE ROCK STARS). I could not do this event without you, and I so hope you have a great time every year and that is what makes you come back for more of my craziness.

[Meeting: Portland Building Renovation](#)  
5:30-8:00 PM  
Elephant's on Corbett

**October 5**  
Learning & Libations  
Series: Ideate  
Applications

**October 10**  
October Chapter Meeting  
PSU Viking Pavilion  
Construction Tour

**2018**

**March 8**  
Industry Forum 2018

CSI Sponsors

[Support CSI, Learn How Here >](#)

Please see the CSI web site for registration on teams and for sponsorships. You can send me a check, call me with credit card or go online to <http://portland.csinet.org> and look for the "2017 Portland Chapter CSI Golf Tournament" under events which will let you register and pay online.



## July Meeting Recap: The Trifecta Treasure Hunt

Bill Pelke, CSI, Covestro LLC

This year's Portland CSI Architectural Scavenger Hunt was a clear winner in a multitude of ways. However, three clear aspects were enjoyed by all participants:

1. **LOCATION:** The Alphabet District was totally perfect for a multitude of designs and architectural types. Old, new and all in-between. With our starting point of Lightning Will providing food and fluid refreshments, we had the run of the house. (With nearly a dozen pinball tables in the back). Kourtney got the teams in order, and set down the rules, and we were all off to find the 10 mystery buildings of intrigue
2. **WEATHER:** It was 65 degrees with pure sun and no wind or humidity. Unlike past years with mist and chill, this year's event was like the Garden of Eden!
3. **TEAM FUN:** With no architects on our team, we all put our heads together to try to interpret the abstract meaning of terms like "rusticated brick", "a modillioned cornice" and "paired festoons". Too many more to list! We split up to save time, and each came up with one or two lucky finds. We all laughed at the obvious one or two we found, and were frustrated and the ones that seemed not to exist.

Hats off to Daniel Bramske, David Donaldson and Mariah Marshall who won the contest this year.

Actually, everyone who participated in the 2017 Architectural Scavenger Hunt won, as it was by far the best scavenger hunt we have had to date and was a fantastic team building event that will long be remembered!

## Mark Your Calendars

August 24, 2017

2017 Portland Chapter CSI Golf Tournament at Lewis River

The golf course will be calling your name soon enough, so why not put it on your calendar early? Find your golf mojo and join us for a fun-filled day in the sun and support the CSI scholarship program in the process. Prizes awarded, raffle tickets available, banquet following, and fun for all.

[REGISTER OR SPONSOR HERE >](#)

September 12, 2017  
September Chapter Meeting  
Portland Building Renovation

Come learn from the design team what renovations are going to take place at the iconic Portland Building. Will Portlandia be finding a new home?

October 10, 2017  
October Chapter Meeting  
Construction Tour of the Viking Pavilion

We had Woofter present on the renovation and expansion project at the PSU Viking Pavilion back in October, and they are back to give us a tour of the construction this coming October!

For more information and registration: [Portland.csinet.org](http://Portland.csinet.org)  
Sponsorship opportunities available! Contact [Ali LaManna](#) for more details.

## EDUCATION



### Learning & Libations Still Going Strong

*Jake LaManna, CSI, CDT, Education Chair*

Here is the format, for those of you unfamiliar with our L&L Series:

- 5:30 PM - Social half hour, pizza and beer
- 6:00 PM - Presentation, more pizza and beer
- 7:00 PM - Questions, you get the picture

**September - PPI Group - BIM Solutions for Construction**

Speakers: Ian Donovan, Wendy Finch

Location: Walsh Construction, 2905 SW First Ave., Portland

**October 5th - Ideate Applications - Revit Shared Coordinates**

Speaker: Sash Kazeminejad, Ideate, Inc.

Location: Walsh Construction, 2905 SW First Ave., Portland

**November/December - 3rd Annual Ugly Sweater Party**

Location: TBD

Sponsored by



## MEMBERSHIP

## Update from CSI National (Society)

### Microsites and Leader Tools

Regarding microsites, CSI's Chicago chapter has completed beta testing of the microsite template and is in the process of customizing their site. Other chapters engaged in the next round of testing are Mississippi, Grand Rapids, Worcester County, and **Portland**. The Northeast, Northwest and West regions will participate in the next round of testing as well. During the testing phase, we are assessing the extent to which local and national information can be presented to members side by side, in mobile friendly formats, identifying which tools and resource are best offered through the new microsite tools, and determining which features are likely to be of most value to you. During the next few months, we'll communicate the features available to you through communities, websites, and other forms of reporting. Taking advantage of these features will be completely optional, and you can expect we'll detail which services will be offered for free versus those that will be offered on a fee basis.

Your Board of Directors has approved investments in these areas and more, as well a modest increase in dues to help support these programs and services. As of July 1, CSI's professional dues will be \$275. Dues for student and retired members will be \$50; emerging professionals will be charged \$150. During the coming months, we'll communicate progress regarding expansion of CSI education programs (both virtual and live), content initiatives, movement of the CDT towards becoming a full-fledged professional certification, and much more in the way of member benefits. These activities are part of a series of major investments made during the past fiscal year, and put in place for the coming fiscal year.

We look forward to sharing much more specific information during the upcoming months, and particularly at CONSTRUCT. Thank you for all you do for CSI.

Mark Dorsey, FASAE, CAE  
CSI CEO

## New & Renewed Members

Renewing Members in April 2017 and Members Emeritus with April anniversary dates:

- Summer Amauba, CSI-EP; Pacific Architectural Products; member since 2016
- Dennis Brown, CSI; Capitol City Door, Inc.; member since 1992
- Craig Cody, CSI; Architextures; member since 2011
- Jody "Joe" Cross, CSI, AHC; Allegion, PLC; member since 1998
- Russel Donohue, RA, CSI, CDT, NCARB; member since 2007
- Etta Goerl, CSI, CCS; member since 2010
- Randall Hagloch, CSI, CDT, AIA; Randall Hagloch Architect, LLC; member since 2008 - **NEW to Portland Chapter**
- Jim Hanset, CSI; Hanset Stainless; member since 1997
- Trasi Hogenhout, CSI; Contractor Plan Center, Inc.; member since 1988

- Scott Huff, CSI-EP; Versico Roofing Systems; member since 2015
- Jim Hutchin, CSI; Bridgetown Sales, LLC; member since 2009
- Teresa Kruse, CSI, CDT, M. Arch; Oh Planning + Design, Architecture; member since 2016
- Mark "Brad" Moyes, CSI; KPFF Inc.; member since 1995
- Derek Payne, CSI, LEED GA; Kingspan; member since 2014
- Michael Prothe, CSI, AIA, NCARB; Clark County Community Development; member since 2004
- Allison Rouse, CSI, CCS; Portland Parks and Recreation; member since 2015
- Joshua Rupe, CSI; Dryvit Systems Inc.; member since 2017 - **NEW**
- Keith Schwarting, CSI-EP, CDT; Tremco Roofing; member since 2017 - **NEW**
- Scott Tice, CSI; Tice Industries, Inc; member since 2002
- George Wolodzko, CSI; GTG Consultants; member since 1994
- Susan Wurdeman, CSI, NCARB; Dull Olson Weekes - IBI Group Architects; member since 1997
- Wendi Ziegler, CSI; Inpro; member since 2015

Emeritus Member with membership anniversary in April:

- Ron Lee, CSI, AIA, BBL Architects, member since 1985

CSI's mission is to advance building information management and education of project teams to improve facility performance. We are the only organization that brings together all the players in the built industry.

Portland Chapter CSI, PO Box 6683, Portland, OR 97228

[SafeUnsubscribe™ ilamanna@walshconstruction.com](mailto:ilamanna@walshconstruction.com)

[Forward this email](#) | [Update Profile](#) | [About our service provider](#)

Sent by [office@portlandcsi.org](mailto:office@portlandcsi.org)



[About](#) | [Join](#) | [Attend](#) | [Contact](#)



VOLUME 57 | ISSUE 9 | **SEPTEMBER 2017**

[\*\*Got News?\*\*](#)

IN THE SPOTLIGHT



## September Chapter Meeting: The Portland Building Renovating a Landmark

Kourtney Strong, CSI, CDT, Programs Co-Chair

Tuesday, September 12, 2017

5:30 - 8:00 PM

Elephant's on Corbett

The Portland Building, designed by Michael Graves and built in 1982 as administrative offices for the City of Portland, is an award-winning design of Post Modern architecture. The building was later placed on the National Register of Historic Places as a building of "exceptional importance," but it currently faces problems with its structure, exterior, and operational

### In this Issue

September Chapter Meeting

President's Message

2018 Industry Forum  
Keynote Speaker Selected

Mark Your Calendars

Education Committee Reboot

Learning & Libations

New & Renewed Members

RCI Portland Chapter Golf Tournament

### Upcoming Events

**September 11-17**  
[CANstruction](#)

**September 12**  
[September Chapter](#)



systems that repairs alone cannot address. To protect and preserve this major public investment, the City has initiated a \$195 million project to reconstruct the Portland Building by the end of 2020. The City will create an adaptable building that will last 50-100 years, providing a productive work environment for employees and a welcoming space for community members.

Members of the Portland Building Project Team will present a design update on the project with a special focus on the complexity of the exterior enclosure design. The team will discuss how the exterior design solution responds to the building's status as an important Landmark in the City of Portland while solving the technical deficiencies that have plagued the building since its construction. [LEARN MORE >](#)

## PRESIDENT'S MESSAGE



### President's Message:

Ellen Onstad, CSI, CDT, Board President

2017-2018 Mission for the Portland Chapter:

***To increase communication and build relationships within the AEC industry.***

1. Engage Current Members/Recruit new Members - Make sure our current members are active participants in the chapter, and to recruit additional members.
2. Increase visibility - Spread the "CSI Word," who we are, and why we are important.
3. Re-Define Education/Why are Specs and Project Delivery Important - Take a fresh look at how we educate people, how we can improve it, and how we can bring back some of the fundamental CSI topics.

How do you see yourself fitting in to the Portland CSI Chapter Family? What are your strengths? Weaknesses? Is there a committee you are dying to join? Have you reached out to the chair to see when the meetings are? The fall is the best time to join, as we are getting back into the swing of things once summer break is over. Our programs are planned for the next few months, but what about seeing if you can help? Call sponsors? Invite a colleague? Submit an idea for an upcoming event? We are always looking for new blood - so come join us.

## CSI PORTLAND NEWS

### 2018 Industry Forum Keynote Speaker Selected

The CSI 2018 Industry Forum where we inspire, inform and educate local professionals will feature Allison Williams, FAIA of AGWms\_Studio as

[Meeting: Portland Building Renovation](#)  
5:30-8:00 PM  
Elephant's on Corbett

**October 5**  
Learning & Libations  
Series: Ideate Applications

**October 10**  
October Chapter Meeting  
PSU Viking Pavilion  
Construction Tour

**2018**

**March 8**  
Industry Forum 2018

CSI Sponsors

[Support CSI, Learn How Here >](#)

Keynote speaker.

Allison Grace Williams, FAIA, is an architect and has amassed an international portfolio of large scale civic, corporate, cultural and research facilities. In practice a SOM, Perkins+Will and AECOM, Williams' inventive instincts, collaborative drive and inspiring, interdisciplinary design approach have generated authentic, relevant buildings.

The work poetically bridges between culture, technology and the environment and conveys the values and traditions of the audience and place. In 2017, with this 35-year foundation in corporate practice, and from an uncommon perspective, Williams created AGWms\_studio as the first step toward the Next: To attract provocative design partnerships that prioritize art form and design process in relevant, cross disciplinary venues and to formalize academic involvements.

Allison I participating as a juror in the AIA Portland Design Awards and will be in Portland during the awards on October 26-27th.

The Industry Forum will also feature the innovate "5 x 10" presentations (five speakers presenting on a topic for 10 minutes each), AIA Speed Education and networking with local professionals.

Save the date of March 8, 2017 at the Portland Art Museum. Sponsorships opportunities will open soon.

## Mark Your Calendars

September 12, 2017

September Chapter Meeting  
Portland Building Renovation

Come learn from the design team what renovations are going to take place at the iconic Portland Building. Will Portlandia be finding a new home?

October 10, 2017

October Chapter Meeting  
Construction Tour of the Viking Pavilion

We had Woofter present on the renovation and expansion project at the PSU Viking Pavilion back in October, and they are back to give us a tour of the construction this coming October!

For more information and registration: [Portland.csinet.org](http://Portland.csinet.org)  
Sponsorship opportunities available! Contact [Ali LaManna](#) for more details.

## EDUCATION

### Education Committee Reboot

*Jake LaManna, CSI, CDT, Education Chair*

Summer, according to the calendar and not the temperature, is waning. Autumn is fast approaching. This is the season of opportunity, especially if you are a football fan. And also if you have an interest in educating your fellow designers, specifiers, and builders. Please contact your friendly neighborhood education co-chairs, [Jake LaManna](#) and [Jennifer Thomas](#) if you...

want to join our committee

have an idea for a Learning & Libation event  
want to join our committee  
have an interest in bringing more project tours to our offerings  
want to join our committee  
Sensing a pattern? We all know that any endeavor is only worth what you put into it, and Portland CSI's educational offerings are no different. We look forward to hearing from you in order to better serve you, our CSI membership!



Here is the format, for those of you unfamiliar with our L&L Series:  
5:30 PM - Social half hour, pizza and beer  
6:00 PM - Presentation, more pizza and beer  
7:00 PM - Questions, you get the picture

#### September - PPI Group - BIM Solutions for Construction

Speakers: Ian Donovan, Wendy Finch

Location: Walsh Construction, 2905 SW First Ave., Portland

#### October 5th - Ideate Applications - Revit Shared Coordinates

Speaker: Sash Kazeminejad, Ideate, Inc.

Location: Walsh Construction, 2905 SW First Ave., Portland

#### November/December - 3rd Annual Ugly Sweater Party

Location: TBD

Sponsored by



## MEMBERSHIP

### New & Renewed Members

Renewing Members in May 2017 and Members Emeritus with May anniversary dates:

- Mark Aasland, CSI; PACE Engineers, Inc.; member since 2017 - **NEW**
- Bryon Allen, CSI; W.R. Meadows; member since 2008
- Jon Bouffleur, CSI; SprayLock; member since 2016
- Maddie Carde, CSI, LEED AP; Cultured Stone by Boral; member since 2015
- Mark Cooney, CSI, CDT; Hubbell; member since 2005
- Jared Fischer, PE, CSI; WRK Engineers; member since 2017 - **NEW**

- Jeff Herrmann, CSI, CDT; Georgia-Pacific; member since 2002
- Dale Kuykendall, CSI, CDT; Wehaha Group; member since 1986
- Jack Livingston, CSI; Woodwork Institute; member since 2017 - **NEW**
- Richard Locke, CSI; Laird Plastics; member since 2015
- Randall Page, CSI, LEED AP, NCARB; Randall A Page, Architect; member since 2014
- Steve Popkes, CSI, CDT; AEP Span; member since 1999
- Austin Sloat, CSI, AIA; Neumann Sloat Arnold Architects Inc.; member since 2009
- Ben Williams, CSI; Guardian Glass; member since 2016 - **NEW TO PORTLAND CHAPTER**

Emeritus Member with anniversary month of May:

- Fred Chomowicz, CSI, Member Emeritus; member since 1983

## INDUSTRY NEWS

### RCI Portland Chapter Golf Tournament

RCI Portland Chapter is proud and excited to announce that sponsorships and golfer registration for our First Annual Golf Tournament is now OPEN!!

We will be holding our tournament on September 28, 2017 at the beautiful Lewis River Golf Course in Woodland, WA.

Head to Events page of our newly launched [website](#) for all the details. You will see that there are numerous levels of participation ranging from individual golfer registration to Gold Sponsorship (yep, the Platinum is already taken!).

We would love for you and your company/guests to join us for a fun filled afternoon of golfing and golf games as we wrap up the end of the warm summer season!!

Suppliers/Sponsors don't forget hole and raffle prizes. If you have missed out on other local tournaments, don't miss this one!! It's going to be lots of fun!

CSI's mission is to advance building information management and education of project teams to improve facility performance. We are the only organization that brings together all the players in the built industry.

Portland Chapter CSI, PO Box 6683, Portland, OR 97228

[SafeUnsubscribe™ jlamanna@walshconstruction.com](mailto:jlamanna@walshconstruction.com)

[Forward this email](#) | [Update Profile](#) | [About our service provider](#)

Sent by [office@portlandcsi.org](mailto:office@portlandcsi.org)



[About](#) | [Join](#) | [Attend](#) | [Contact](#)



VOLUME 57 | ISSUE 10 | **OCTOBER 2017**

[Got News?](#)

IN THE SPOTLIGHT



## October Chapter Meeting: Portland State University Viking Pavilion Tour

Kourtney Strong, CSI, CDT, Programs Co-Chair

Tuesday, October 10, 2017

5:30 - 8:00 PM

Peter W. Stott Center

Come join Woofter Architecture and Fortis Construction for a tour of the renovation in progress at the Portland State University Peter Stott Center and Viking Pavilion. This multi-use facility acts as both a new gateway to the campus and a new destination for the entire community. A key goal in the transformation of an outdated, inward-facing 1964 building into a

### In this Issue

October Chapter Meeting: PSU Viking Pavilion Tour

President's Message: Construct 2017

2018 Industry Forum Sponsorships Now Available

Committee Corner

Learning & Libations: October

New & Renewed Members

RCI Portland Chapter 2-Day Education Symposium

### Upcoming Events

**October 5**  
[Learning & Libations Series: Ideate Applications](#)

significant campus and community resource was to fully engage its unique exterior context. In place of the existing blank brick walls, large areas of glazing are carefully distributed to connect the energy and use of the building's public spaces with the Park and campus beyond. Check out the presentation we had last October on the design [here](#), and join us for a in person tour of the progress. Following the tour, we will have networking and happy hour at Rogue Hall.

[REGISTER HERE >](#)

## PRESIDENT'S MESSAGE



### President's Message: CONSTRUCT 2017

Ellen Onstad, CSI, CDT, Board President

It would be easy to summarize CONSTRUCT 2017 by the education classes I attended, the presentations I saw, the people from around the world I met, the discussions that occurred on the trade show floor, the old friends I was able to catch up with, or the products that are new and improved. But CONSTRUCT is so much more than that. [READ MORE >](#)

## CSI PORTLAND NEWS



### 2018 Industry Forum Sponsorships Now Available

Industry Forum 2018 Sponsorships now available. For more information, click [HERE >](#)

Industry Forum (3 LU available)  
Thursday, March 8, 2018  
Portland Art Museum, PAM Grand Ballroom

Event Schedule:

### October 10

[October Chapter Meeting](#)  
[PSU Viking Pavilion Construction Tour](#)

### October 19

Programs Committee meeting  
5:30-6:30 PM  
Precision Images

### October 19

Education Committee meeting  
5:30-6:30 PM  
707 SW Washington St.

### 2018

### March 8

Industry Forum 2018

## CSI Sponsors

[Support CSI, Learn How Here >](#)

CSI Portland 2017-2018 Focus/Goals

***To increase communication and build relationships within the AEC industry.***

1. Engage current members/recruit new members
2. Increase visibility
3. Re-define education offerings

3:30 to 4:00 Registration  
4:00 to 5:00 5 x 10 (Five presentations of 10 min. length)  
5:00 to 6:30 Speed Education  
6:00 to 7:15 Food & networking  
7:15 to 7:30 Introductions & door prize(s)  
7:30 to 8:30 Keynote presentation (Allison Williams, FAIA)

## Committee Corner

This is the one stop shop to find out how you can get more involved with Portland CSI. All of our chapter events are created and organized by volunteers, and we are always looking for new people who would like to share ideas and help out to keep our chapter vibrant and engaging. So, if you are looking for a way to improve your professional skills, network, and make new friends, this is the place for you. We have numerous committees that cover a wide range of topics. Look below to see when committees are meeting, or you can find a full list of all the committees and their chair's contact information [HERE >](#).

### Programs Committee

The programs committee will be meeting Thursday, 10/19, 5:30-6:30pm, at Precision Images 900 SE Sandy Blvd. Email Ali LaManna at [alil@emerick.com](mailto:alil@emerick.com) if you are interested in attending.

### Education Committee

The education committee will be setting our monthly meeting time at October's meeting, on October 19th from 5:30 to 6:30, at 707 SW Washington Street, Suite 1100. Email Jake LaManna at [ilamanna@walshconstruction.com](mailto:ilamanna@walshconstruction.com) if you are interested in attending.

## EDUCATION



### October 5th - Ideate Applications - Revit Shared Coordinates

Speaker: Sash Kazeminejad, Ideate, Inc.

Location: Walsh Construction, 2905 SW First Ave., Portland

Stop Wandering and Start Coordinating. Take a Look at the Revit Coordinate System at the October Learning and Libations on October 5th.

Have you ever been in the position of linking Revit and CAD files only to discover that none of them align? As a result, we start playing around with a variety of linking options and then find out that we have made things even worse, adding more confusion to an already baffling topic. It is probably safe to assume that all of us have been in this position at one point in time in our Revit careers.

As you have discovered, the Revit Coordinate System can be a little tricky to navigate. At first glance, there is really nothing to see except for a blank screen with a few elevation tags, but hidden beneath these views is a very powerful system in which we can coordinate the location of our projects and linked files. Before anyone begins to model anything in Revit, it is important to establish coordinate points that the entire project team can reference. We will have a look at these methods so that moving forward, you will be able to successfully locate your project in its respective location and link other Revit files without having to make any adjustments after the fact.

Please bring your thirst for both knowledge, and beer (but mostly knowledge).

Here is the format, for those of you unfamiliar with our L&L Series:

5:30 PM - Social half hour, pizza and beer

6:00 PM - Presentation, more pizza and beer

7:00 PM - Questions, you get the picture



## MEMBERSHIP

### New & Renewed Members

Renewing Members in June 2017 and Members Emeritus with June anniversary dates:

- Jaci Amend, CSI; Moxie Management; Member since 2013
- Kelly Bryant, CSI, RCI, RRO; Soprema, Inc.; Member since 2008
- Ken Dzioba, CSI, CDT; GCP Applied Technologies; Member since 1996
- Joseph Gehlen, CSI; Kramer-Gehlen & Associates, Inc.; Member since 1988
- Scott Harris, CSI; JRJ Architects, LLC; Member since 1999
- John Herrmann, CSI, CDT; Bain Associates, Inc.; Member since 1991
- Geoffrey 'Geoff' Jenks, CSI-EP, ASHRAE; Streimer Sheet Metal Works Inc.; Member since 2015
- Randy McAdams, CSI; Atlas Supply; Member since 2010
- Glen Miller, CSI; GA Miller Architecture; Member since 1997
- Kenneth Mouchka, CSI, CDT, AIA; Mouchka Architecture LLC; Member since 1980
- Bryan Ninneman, CSI, CDT; Creative Design Concepts; Member since 2015
- Alan Taylor, CSI, CDT; Ankrom Moisan Architects, Inc.; Member since 2016

### Members Emeritus with June Anniversary Dates

- Deane "Bud" Smith, CSI, Member since 1959 (Charter Member of Portland Chapter)
- Lee Kilbourn, FCSI, CCS, FAIA; Member since 1967
- Samuel Ream, CSI, AIA; Member since 1978



- Richard "Mac" McBride, CSI, Member since 1996

## INDUSTRY NEWS

### RCI Portland Chapter 2-Day Education Symposium

Registrations are now being taken for the Portland Chapter of RCI's 2-Day Education Symposium: Exterior Walls Quality Assurance & Building Envelope Presentations. This event is taking place November 9 & 10, 2017 at Hayden's Lakefront Grill in Tualatin, Oregon. Head to Events page of our website [www.PortlandRCI.com](http://www.PortlandRCI.com) for all the details and to get registered.

CSI's mission is to advance building information management and education of project teams to improve facility performance. We are the only organization that brings together all the players in the built industry.

Portland Chapter CSI, PO Box 6683, Portland, OR 97228

[SafeUnsubscribe™ ilamanna@walshconstruction.com](mailto:ilamanna@walshconstruction.com)

[Forward this email](#) | [Update Profile](#) | [About our service provider](#)

Sent by [office@portlandcsi.org](mailto:office@portlandcsi.org)



[About](#) | [Join](#) | [Attend](#) | [Contact](#)



VOLUME 57 | ISSUE 11 | **NOVEMBER 2017**

[\*\*Got News?\*\*](#)

## PRESIDENT'S MESSAGE



### President's Message: CONSTRUCT 2017

Ellen Onstad, CSI, CDT, Board President

I was at a conference years ago, I saw a woman walk into the room, she walked strong, independent and so very sure of herself, it became clear she didn't know anyone in the room, so she walked out looking defeated and if I could have, I would have gone up to her to introduce myself, just so she would know someone. I didn't know her, but I felt for her, after all how many of us have been in that situation? Walked into a room and know no one! I have been lucky in CSI meetings, at The NW Region conferences and National Construct. I seem to know at least one person at each event. Why? because my parents were involved? Because I volunteered on various committees? Because shortly after joining CSI I was on the board of directors? Because I have been working at Dodge Data & Analytics in one way or another for over 20 years? Or my favorite



## In this Issue

President's Message

2017 Annual Golf Tournament Results

September Meeting Recap: PSU Viking Pavilion Tour

AFO Honored Citizen Tribute Dinner

Upcoming Events

Committee Corner

New & Renewed Members

## Upcoming Events

**November 14**  
CSI Chapter Meeting:  
Meet the Board

**2018**

**January 9**  
CSI Chapter Meeting:

because, I smile at everyone and try to be friendly?? [READ MORE >](#)

## CSI PORTLAND NEWS



### 2017 Annual Golf Tournament Results

Randall A Page, CSI, NCARB, LEED AP, Director

The 2017 CSI Annual Golf Tournament provided 132 registered golfers with a day in the sun and a competitive round of having fun at the Lewis River Golf Course. Providing fuel to energize the teams on a long afternoon in their golf carts was the popular "Hot Dog Stand" hosted by three very loyal sponsors: DeaMor Associates, Owens Corning and the Contractor Plan Center. [READ MORE >](#)



### September Meeting Recap: PSU Viking Pavilion Tour

Alicia LaManna, CSI, President-Elect, Programs Co-Chair

We had a great tour of the Peter Stott Center and Viking Pavilion, under Renovation, on the PSU Campus. Woofter Architecture, Fortis Construction, Inc and PSU guided a group of around 50 participants through the phased renovation of the Peter Stott Center and Viking Pavilion. The entire athletics department is now housed in one building, and the student athletes have received a new renovated weight room and sports medicine clinic. The basketball stadium is still under construction, but they are looking to complete the renovation by this coming spring. The large glazed façade will really open up the stadium to the campus and park blocks allowing the public to see into the building to what is going on inside. We are really looking forward to seeing this building complete, and the architects from Woofter Architecture have already offered to bring us back for a tour of the final product. Keep an eye out for the tour notice this summer!

### AFO Honored Citizen Tribute Dinner

Alexander Lungershausen, CSI, CDT, Treasurer

The Architecture Foundation of Oregon awarded Donald J. Stastny as

Annual Economic Forecast

#### February 13

CSI Chapter Meeting:  
CLT Construction Trends

#### March 8

Industry Forum 2018

CSI Sponsors

[Support CSI, Learn How Here >](#)

CSI Portland 2017-2018 Focus/Goals

***To increase communication and build relationships within the AEC industry.***

1. Engage current members/recruit new members
2. Increase visibility
3. Re-define education offerings

their 2017 Honored Citizen. Don is a long-time friend of Portland Chapter CSI and has been an amazing resource for ideas and keynote speakers for the chapter's Industry Forum. Several members of Portland Chapter CSI attended and the chapter sponsored a table at the celebration.

The evening was filled with socializing between old acquaintances and new, then dinner. After, Don took the stage and gave a synopsis of his lessons learned from 33 years of managing international competitions. His key points that all of us as designers should take into consideration are:

- Listen to the land.
- Understand the dance and the rhythms of the seasons and the day.
- Explore the texture of light.
- Celebrate the shape of space -be aware of the container you create and how it impacts how you act.
- Honor the language of material - let it tell the story of mother earth.
- Choreograph the ceremony of the space - score the movement.
- Walk in beauty think about the world around you - find harmony balance grace.
- Respect the loudness of silence - look around the corners of the masses you create, see the spaces while moving within their context.
- Learn to parallel park - find the straightest path to solve a complicated situation.
- Teach your smartphone to play dumb - disengage from technology at times.
- Get your hands dirty - understand the skills needed to create what we design.
- Respect the village idiots - often unencumbered ideas might be a keeper.
- Embrace your personal superpowers.
- Listen to the voices in your head.
- Fail miserably at retirement - Excel at growing old.
- Realize creativity is a legal drug you can't overdose on.
- Explore transformation - create wayfinding for future generations.
- Create echoes with your work. Voices fade, echoes remain.
- And furthermore .... realize that you are either on the bus or off the bus (you are driving to effect change or you are not).
- Change the world.
- Live your dream.

If we had the institution of naming individuals as National Treasures in this country, Don would be my first choice.

Carpe diem

## Upcoming Events

### **November Chapter Meeting - Portland CSI Connect**

Tuesday, November 14, 2017 from 5:30 to 7:30

Come get to know what the Portland Chapter and CSI can do for you, your career, and your company! Meet the board, learn how to get involved, find out what exciting opportunities we have coming up, and grab a beer on us! This is a FREE happy hour event at Migration Brewing.

### **December Emerging Professional Ugly Sweater Party**

Date to be Determined Soon!

This is our third year of donning our holiday regalia and spreading some good cheer. Our ugly sweater contest will pick winners for the ugliest and most creative sweaters. Come have some festive fun and network with some AEC professionals. This will be a joint meeting with AIA Emerging Professionals and ASHRAE.

### **January Chapter Meeting - 2018 Economic Forecast**

Tuesday, January 9, 2018

Our annual Construction Economic Forecast is coming back in January. For a full understanding of the issues impacting construction please join us for a breakdown of the industry and a review of the influencers impacting the various sectors and what the prediction for the next year will be.

### **February Chapter Meeting - CLT Construction Trends**

Tuesday, February 13, 2018

We have CLT buildings popping up all over the place in the metro area. Come hear from our panel of experts working on these projects about the challenges, opportunities, and what it is like to work on this new building trend.

## **Committee Corner**

This is the one stop shop to find out how you can get more involved with Portland CSI. All of our chapter events are created and organized by volunteers, and we are always looking for new people who would like to share ideas and help out to keep our chapter vibrant and engaging. So, if you are looking for a way to improve your professional skills, network, and make new friends, this is the place for you. We have numerous committees that cover a wide range of topics. Look below to see when committees are meeting, or you can find a full list of all the committees and their chair's contact information [HERE >](#).

### **Programs Committee:**

Meetings for the Programs committee will be handled via email through the holiday season. If you would like to get involved, please email Ali LaManna at [alil@emerick.com](mailto:alil@emerick.com). We are looking for ideas for our spring Chapter Meetings. Please let us know if you can think of a topic that would interest you!

### **Membership Committee:**

We're looking for friendly, tenacious people who like talking to people! Are you interested in helping to recruit new CSI members? Are you interested in helping to retain our current members? The membership committee works on a wide number of member related items, including reminding people to renew, helping new members sign-up, and enhancing the member experience. If you are interested in helping out, please email Lee Kilbourn at [lfk22@comcast.net](mailto:lfk22@comcast.net).

### **Sponsorship/Publicity Chair Needed!**

Portland CSI is looking for someone to quarterback our outreach into the AEC community. We have lots of current volunteers willing to help, but we need a point person to help find sponsorships for our events, and help spread the word about what CSI has to offer. If you would be interested email Ali LaManna at [alil@emerick.com](mailto:alil@emerick.com).

## MEMBERSHIP

### New & Renewed Members

Renewed, new to Portland Chapter, and emeritus members of Portland Chapter CSI July 2017

- Mike Aguilar, CSI; Stonhard; member since 2015
- Doug Allen, CSI, CDT; ASSA ABLOY Door Security Solutions; member since 1999
- Summer Amauba, CSI-EP; Panel Guys; member since 2016
- Julie Bronder, CSI, AIA; ZGF Architects LLP; member since 1993
- Tony DiVincenzo, CSI, LEED GA; Ideate Inc.; member since 2012
- Brad Glauser, CSI, SAME; Wausau Window & Wall Systems; member since 2015
- Richard Heiserman, FCSI, CCCA, AIA; Ankrom Moisan Architects; member since 1986
- Andre Kenstowicz, CSI-EP; Vitro (formerly PPG); member since 2016
- Brian Lee, PE, CSI; PACE Engineers; member since 1997
- Jody Moore, CSI, CDT; DeaMor Associates, Inc.; member since 1984
- Ian Murphy, CSI, CDT; Exterior Allied Systems LLC; member since 1992
- Patrick Murphy, CSI, CDT; member since 2015
- Justin Norman, CSI; Woodfold Mfg. Inc.; member since 2010
- D. Dustin Posner, CSI, CCCA, AIA, NCARB; Clark/Kjos Architects LLC; member since 2009
- Douglas Sams, CSI, CDT, AIA, LEED AP; ZGF Architects LLP; member since 2002
- Patricia Smith, CSI, CDT, AHC; Dorma Kaba; member since 2005
- **NEW TO PORTLAND CHAPTER**
- Mitchell "Mitch" Vogt; CNM Arch. Sales & Services Inc.; member since 2005
- Michael Wilson, RA, CSI, CDT; SERA Architects; member since 1991

Emeritus Member with July membership anniversary date:

- Robert "Bob" Cloud, CSI, member since 1976.

CSI's mission is to advance building information management and education of project teams to improve facility performance. We are the only organization that brings together all the players in the built industry.

The Construction Specification Institute, Portland Chapter,  
PO Box 6683, Portland, OR 97228

[SafeUnsubscribe™ jlamanna@walshconstruction.com](#)

[Forward this email](#) | [Update Profile](#) | [About our service provider](#)

Sent by [office@portlandcsi.org](mailto:office@portlandcsi.org)



[About](#) | [Join](#) | [Attend](#) | [Contact](#)



VOLUME 57 | ISSUE 11 | **DECEMBER 2017**

[Got News?](#)

IN THE SPOTLIGHT

## CDT Scholarships Available - Apply by 12/31

Cherise Lakeside, CSI, CDT, Director at Large

The Portland Chapter of CSI is offering CDT certificate scholarships to architects, design consultants, engineers, contractors, subcontractors and product representatives with less than 10 years industry experience. Please forward this information to anyone you know who would be interested in obtaining their CDT certificate.

### The Details

**Application Deadline is December 31, 2017.** Final decisions will be announced the first week of 2018 to take advantage of exam early registration discounts that end on January 23, 2018.

### Included in this Scholarship

National membership dues (if not already a member) for first year.	\$115 Emerging Professional \$240 Professional
You pay first \$100, we pay balance	
CSI Portland Chapter membership dues	\$75 included
CDT study group beginning Feb. 2018	\$150 included
Exam registration fee	<u>\$295 early registration by January 23rd required</u> You pay for exam and are reimbursed on passing only
Total value	\$635 Emerging Professional



### In this Issue

In the Spotlight: CDT Scholarships Available

President's Message: Happy Holidays

Upcoming Events

Save the Date: Portland CDT Classes

Renewed and New Members

Wayward Websites

### Upcoming Events

#### 2018

#### January 9

CSI Chapter Meeting: Annual Economic Forecast

#### February 13

CSI Chapter Meeting: CLT Construction Trends

\$760 Professional

\*Membership dues after first year will be the responsibility of the recipient

### Initial Out-of-Pocket Cost to Applicant

CSI national membership dues	\$100
Exam registration fee (Reimbursed when exam passed)	\$295 due by January 23, 2018 exam period in April/May 2018
Total initial costs	\$395
Total final net costs	\$100 if exam passed \$395 if exam not passed

### To Qualify

- You must be a current CSI member or obtain CSI membership. View benefits of membership here
- Have less than ten years experience in your field
- Commit to one year participation on a CSI Portland committee of your choice. View list here
- Pay your own membership and exam fee up front, for reimbursement immediately for membership and upon passing the exam

### To Apply

Send the following information to Cherise@LSW-Architects.com

- Name
- Firm (if applicable)
- Address
- Phone
- Email
- Years of experience
- Discipline (i.e. architect, consultant, contractor, product rep)
- Committee(s) of interest
- Paragraph about why you are pursuing CDT certification and what you hope to achieve
- CSI membership number (if applicable)
- Did someone recommend this scholarship to you? If so, who?

## PRESIDENT'S MESSAGE

### President's Message: Happy Holidays

Ellen Onstad, CSI, CDT, Board President

We just finished Thanksgiving, and we are getting into the full Holiday Spirit. I hope you all can join in The Ugly Christmas Sweater Party - my problem is I am on the lookout for a pretty "Ugly Sweater" which gets into all types of problems - So maybe I'll just wear a red or green sweater and call it good.

We are also creeping up quickly on the end of the year and a couple of things to keep in mind. You should have received sponsorship information packet for 2018. We are grateful for our events which include golf, chapter meetings, Industry Forum and Learning & Libation sponsors. Without those Individuals and Businesses, we could not bring you the wonderful events that we do. It is with the support of our sponsors, partners and advertisers that the Chapter can provide

**March 8**  
Industry Forum 2018

**June 12**  
Annual Chili Cook-Off  
and Awards Night

**July 10**  
Architectural Scavenger  
Hunt

**August 23**  
Annual Golf Tournament

### CSI Sponsors

[Support CSI, Learn How Here >](#)

CSI Portland 2017-  
2018 Focus/Goals

***To increase communication and build relationships within the AEC industry.***

1. Engage current members/recruit new members

2. Increase visibility

3. Re-define education offerings



continuing education programs and encourage collaboration among members of the design team. We have been fortunate in past years to have the support of organizations, like yours, and we are hopeful that this year will be no different.

You may notice that the yearly dues for the Portland Chapter have increased starting in 2018. This is due to the Cost of Business. Some chapters have much higher dues because they include meals. We do not, but hope to include more member events at no charge. The increase of our Portland Chapter dues is the first increase in several years.

As we wrap up 2017 and look toward 2018 I'm excited to have Cliff Brewis speak in January on the Dodge Construction Outlook. Beyond that Ali, Kourtney and The Programs Committee are working hard to bring great presentations next year. Some of the Boards goals include to engaging more with current members, increase visibility and re-define Education. In that aspect I would like to ask if anyone is interested in a Board Position (Contact Me) or A Committee Member (Contact the Chair) or Long-Range Planning for the Chapter (Contact Jaci) Our chapter is only as strong as its members, we are lucky to have engaged and active members, but we are always looking for more people to spread the fun!

Happy Holidays to You and yours and have a blessed new year.

## CSI PORTLAND NEWS

### Upcoming Events

#### **January Chapter Meeting - 2018 Economic Forecast LUNCH EVENT**

Tuesday, January 9, 2018

Our annual Construction Economic Forecast is coming back in January. For a full understanding of the issues impacting construction please join us for a breakdown of the industry and a review of the influencers impacting the various sectors and what the prediction for the next year will be. [MORE INFORMATION HERE >](#)

#### **February Chapter Meeting - CLT Construction Trends**

Tuesday, February 13, 2018

We have CLT buildings popping up all over the place in the metro area. Come hear from our panel of experts working on these types of projects. Learn about the challenges, opportunities, and what it is like to work on this new building trend. [MORE INFORMATION HERE >](#)

#### **CSI Portland Chapter Industry Forum 2018**

March 8, 2018

Industry Forum 2018, attended by hundreds of architects, designers, engineers, contractors, product reps, and owners, provides the A/E/C community an annual and stimulating look at what's innovative in the industry. This year's keynote speaker is Allison Williams, FAIA, speaking on "The Industry and the Art". In addition for the second year, we are partnering with AIA for speed education! Mark your calendars! Sponsorship opportunities are available now!

#### **CSI 5th Annual Chili Cook-Off and Awards Night**

June 12, 2018

Warmer weather means more fun with Portland CSI! The Annual Chili Cook-Off is the perfect event for all you networking chili-lovers. Whether you want to join the competition as a team with your own chili recipe, or

just come to judge your colleague's cooking skills and costumes, you are more than welcome. This is also our annual chance to thank all of our hardworking volunteers with the Portland Chapter Awards, and all of our members with low price tickets for a fun and festive evening.

### **Annual Architectural Scavenger Hunt**

#### **FREE EVENT**

July 10, 2018

Put on your thinking caps, grab the map and the clues, and come test your architectural knowledge! The summer time is also the time for our Annual Architectural Scavenger Hunt, and we are busy hunting down clues to make a fun and challenging trail for you to follow. This year will be our first hunt on the eastside of the river. Brush off your sleuthing skills and save the date for July 12th. This is a free event with a hosted Happy Hour to follow, so spread the word around your office to anyone that is interested in coming to see what Portland CSI is all about!

### **2018 Portland Chapter CSI Golf Tournament**

August 23, 2018

The golf course will be calling your name soon enough, so why not put it on your calendar early? Find your golf mojo and join us for a fun-filled day in the sun and support the CSI scholarship program in the process. Prizes awarded, raffle tickets available, banquet following, and fun for all.

For more information and registration: [Portland.csinet.org](http://Portland.csinet.org). Sponsorship opportunities available! Contact [Ali LaManna](#) for more details!

## CERTIFICATION

### Save the Date: Portland CSI CDT Classes

Cherise Lakeside, CSI, CDT, Director at Large

[Construction Document Technology \(CDT\)](#) certification classes will tentatively be held on Wednesday evenings during the months of February and March 2018. We are still searching for a location to hold this year's class. Cost for class will be \$150 for CSI members and \$200 for non-members. More details to come soon.

## MEMBERSHIP

### Renewed and New Members as of August 2017

- Dean Aldrich, Esq., CSI; The Aldrich Law Office; member since 1996
- Owen Elkins, CSI; Bain Associates, Inc.; member since 2017 - **NEW**
- Anthony Fennig, CSI; PKA Architects; member since 1993
- Chris Ferguson, CSI; Atlas Supply, Inc.; member since 2015
- Samuel Hampson, CSI-EP; Miller Paint Company; member since 2017 - **NEW**
- Bryce Jacobson, CSI; Metro SW&R; member since 1997
- James LaManna Jr., BA, CSI, CDT, M. Arch; Walsh Construction Company; member since 2013
- Dennet Latham, CSI, CCS, AIA, LEED AP, M. Arch; Architect, Specifier; member since 1980
- William Pelke, CSI, AIA, CSC; Covestro; member since 2004
- Ray Rauscher, CSI; Speedy Glass Commercial Division; member since 2015
- Paul Schultz, CSI-S; Student; member since 2017 - **NEW**

- George Volker, CSI; Pella Windows & Doors; member since 2016
- Eric Watson, PE, CSI, SE; Miller Consulting Engineers; member since 2003
- Jason Wesolowski, CSI; Scott Edwards Architecture; member since 2017 - **NEW**
- James Wilson, CSI, CCS; SRG Partnership, P.C.; member since 1989
- David York, CSI, AIA; Architect; member since 2013

Members Emeritus with August Anniversary dates:

- Inge Annelise Carstanjen, CSI, CDT; member since 1983
- Mr. Ron Huld, CSI, LEED AP, member since 1982
- Richard Hurley, CSI, CDT; member since 1988
- Richard Gessford, CSI, CDT, AIA; member since 1993

## INDUSTRY NEWS

### Wayward Websites

Sheldon Wolfe, RA, FCSI, CCS, CCCA, CSC

There's often a lag between the time something new comes along and the time it is fully incorporated into our lives or work. When websites first came online, in the mid-'90s, they had obvious potential but companies weren't sure what to do with them. As I recall, many of them focused on the history of the company, stocks and market activity, and various other things useless to most visitors. The content was what the company owner thought was interesting; it was not what the prospective customers needed. [READ MORE >](#)

CSI's mission is to advance building information management and education of project teams to improve facility performance. We are the only organization that brings together all the players in the built industry.

The Construction Specification Institute, Portland Chapter,  
PO Box 6683, Portland, OR 97228

[SafeUnsubscribe™ jlamanna@walshconstruction.com](#)

[Forward this email](#) | [Update Profile](#) | [About our service provider](#)

Sent by [office@portlandcsi.org](mailto:office@portlandcsi.org)