



VOLUME 56 | ISSUE 1 | JANUARY 2016

## IN THE SPOTLIGHT

### To Give is to Receive: Annual Randall's Childrens' Hospital Toy Drive

*Alicia Clark, CSI-EP, Programs Chair*



Over 10,000 children go through RCH every year, many with life threatening illness, cancer treatments, and other medical challenges. Many are scared, some become brave and overcome that fear. They overcome that fear because of people's generosity and the love and support of their community. Portland CSI set a goal of 500 toys. Currently we have only collected around 200, so we are extending the drive through the New Year to January 22nd.

Please take advantage of the after Christmas sales, and help us reach our goal! We will be collecting them at our January Chapter Meeting, or you can drop them off at Precision Images located at 900 SE Sandy Blvd, Portland, OR. You can also donate money which will be spent wholly on toys for sick or injured children. [CLICK HERE FOR TOY IDEAS >](#)

### 2015 Sponsors are Stars

*Corey Morris, CSI, Chapter Secretary*

I would like to take a moment on behalf of all of us here at Portland CSI to thank our 2015 event sponsors. Your support helps us to put on amazing events month after month, and we couldn't do it without you!



### Got News?



#### In this Issue

[President's Message](#)

[Sponsorship](#)

[Opportunities 2016](#)

[President's Message](#)

[New Year, New](#)

[Opportunities](#)

[Industry Forum 2016](#)

[Save the Dates](#)

[CSI on YouTube](#)

[Scholarships Awarded](#)

[New & Renewed](#)

[Members](#)

[Election Time](#)

[CSI Willamette Valley](#)

[Product Show](#)

[Building Controls](#)

[Debate](#)

[Cross Laminated](#)

[Timber](#)

[CANstruction 2016](#)

#### Upcoming Events

**January 12**  
[Chapter Meeting 2016](#)



INTERFACE  
ENGINEERING

[Construction Forecast](#)

**January 20**  
IFMA's Building Controls  
Debate  
11:30A - 1:00P  
Widmer Brewery

**January 20**  
AIA's Cross Laminated  
Timber

**February 9**  
Chapter Meeting  
Grill the Estimator

**February 25**  
CSI Willamette Valley  
Product Show

**March 9**  
Chapter Meeting  
Multi-Generational Panel

**April 12**  
Chapter Meeting:  
Design/Build, Design  
Assist, Delegated Design

**May 11**  
CSI Industry Forum  
Portland Art Museum

**May 18-22**  
[CSI Bi-Region Conference  
& Leadership Training](#)  
Hyatt Regency Lake  
Tahoe, NV

**June 14**  
CSI Annual Chili Cook-off  
and Awards

**July 12**  
CSI Annual Architectural  
Scavenger Hunt

In the 2016 year, CSI plans to present 12+ events that may be sponsored by companies or other organizations. Our programs and special events provide businesses within the A/E/C industry an outstanding business development opportunity. You will gain valuable exposure for your firm, productive networking opportunities, and access to key clients and market intelligence. [DOWNLOAD SPONSORSHIP INFO HERE >](#)

For more information about how to partner with Portland CSI as one of our sponsors, contact us at [portlandcsi@gmail.com](mailto:portlandcsi@gmail.com)

## PRESIDENT'S MESSAGE

### President's Message

*Cherise Lakeside, CSI, CDT, Chapter President*



Welcome to 2016! Personally, I couldn't be more excited about the year to come. Portland CSI has been busy this last year. Our \$10 beer, pizza and education series has really taken off under the dedicated leadership of Jake LaManna. We sold out almost every session this last year and provided valuable education that our members could take to

work and use the very next day. [READ MORE >](#)

## CSI PORTLAND NEWS

### New Year, New Opportunities to Make a Difference

*Cherise Lakeside, CSI, CDT, Chapter President*



Welcome Portland CSI Members to the new year. With a new year comes new goals and objectives to make our chapter bigger, brighter and better than ever before. We can't do this without you. One of the things that makes Portland CSI's programs and education so dynamic are all of the wonderful people that volunteer their time, efforts and expertise to

make it happen and we need your voice.

Are you a whiz at social media? Are you a foodie and like helping with menu selection for events? Do you have a creative itch that needs to be scratched? Do you have an interest in websites, but no venue to learn? Are you a pretty darn good photographer or video editor?

There are many ways to get involved like speaking, helping with the newsletter, brainstorming educational activities, greeting at events, participating on the Board of Directors (we are looking for 2016/17 candidates now), helping collect toys for our annual charity drive. Some jobs are big and some jobs are small, but many hands make light work and you can choose what works with your talents and time. [LEARN MORE](#)

## CSI Sponsors

[Support CSI, Learn  
How Here >](#)

[HERE >](#) or contact the Chapter with your thoughts and ideas!

---

## Early Bird Rate Ending Soon

### Industry Forum 2016: Theory of Practice

*Corey Morris, CSI, Chapter Secretary*



Have you secured your sponsorship spot yet? Sponsorships for the 2016 Industry Forum on May 11, 2016 are available! This is the construction industry event of the year you do not want to miss!

Sign up early to secure your place as one of the exhibitors and reach 400-500 industry professionals. Sponsorship levels range from \$695 to \$2,250 and offer many benefits. And by signing up now, you will receive our early bird discount.

[LEARN MORE HERE >](#)

[SIGN UP AS SPONSOR HERE >](#)

[REGISTER TO ATTEND HERE >](#)

---

## Save the Date

*Alicia Clark, CSI-EP, Programs Chair*



### January 12, 2016

2016 Construction Forecast with Cliff Brewis of Dodge Data & Analytics  
Join us for the Portland CSI Annual Construction Forecast.

The overall expectation for construction is positive, but some sectors will perform better than others. For a full understanding of the issues impacting construction please join Cliff Brewis, Vice President of Operations with Dodge Data and Analytics (formerly McGraw-Hill Construction/Dodge). He will break down the industry and review the influencers impacting residential, commercial, institutional, and public works.

The program will begin with a discussion of the major national economic influences and move to a more local perspective, to help you anticipate how the industry will perform and better position your business for success. [LEARN MORE OR REGISTER HERE >](#)

### February 9, 2016

Grill the Estimator (Joint Meeting with ASPE)

It's heating up in here! Come put estimators on the spot to answer the tough questions!

### March 9, 2016

Project Delivery: Why do we use them/What do they all mean?  
(Joint Meeting with DBIA)

What are the new trends in project delivery and where is the risk getting pushed to?

### April 12, 2016

Multi-Generational Panel: Design/Construction and the Changing of the Guard Speed Mentoring Event  
Baby Boomers are retiring, Millennials are entering the workforce in-mass, and the recession threw a wrench in the whole system.

Sponsorship Opportunities Available! Contact [Ali Clark](#) for more details!

## CSI Portland is on YouTube

*Jake Lamanna, CSI-EP, CDT, Education Chair*



Did something come up at the last minute and spoil your perfect attendance record at the Portland CSI monthly chapter meetings? Were you in attendance, but can't quite remember the product that was discussed that would be a perfect fit for your current design dilemma? Fear not, Portland CSI has a channel on YouTube!

Yes, now you can binge watch every monthly event that Portland CSI has put on in the past year. And with a convenient link to CSI Construction's YouTube Channel, the Portland CSI YouTube page can be your one-stop shop for all your CSI YouTube needs. Just go to youtube.com and search "Portland CSI Channel". Click on the link that looks like the Portland CSI logo, and you'll be greeted with dozens of hours of CSI goodness. [GO TO YOUTUBE CHANNEL >](#)

New posts happen every month so stay tuned for new and improved event videos. One of the most viewed videos currently on the Portland CSI YouTube Channel is the Portland CSI Industry Forum 2015 - Keynote address from OMA. [CHECK OUT OMA HERE >](#)

*\*Warning - Some videos may contain exceedingly useful information which may help inform the way you practice architecture and project delivery for years to come. Side effects may include an uncontrollable desire to attend these events in person to meet the amazing people who want to share their expertise based on years of experience working in the construction industry in Portland, Oregon and beyond.*

## CERTIFICATION

### Scholarships Awarded



Education and outreach to our members is an important goal at Portland CSI. Each year we use our earnings from our annual golf tournament to offer scholarships to professionals looking to up their game with certification. Please congratulate our 2016 winners:

- Debbie Knippert, CDT candidate
- Joshua Guerra, CDT candidate
- Caroline Hather, CDT candidate
- Caitlin Reed, CDT candidate
- Stephanie Tauber, CDT candidate
- Cherise Lakeside, CCS candidate

And if you are pursuing certification, don't forget to sign up for our CDT classes beginning February 3rd and running each Wednesday through March 16th. [REGISTER HERE >](#)

## MEMBERSHIP

### New & Renewed Members - October 2015

*Lee Kilbourn, FCSI, FAIA, Membership Chair*

- Doug Allen, CSI, CDT; ASSA ABLOY Door Security Solutions; member since 1999
- Christopher Bennett, CSI, CDT; HUSQVARNA Construction

- Products; member since 2014
- Faye Burch, CSI; FM Burch and Associates, Inc.; member since 2015
- Michelle Cartwright, CSI; Artek, Inc.; member since 2013
- David Chatburn, CSI; C.R. Laurence Co; member since 2007
- Bill Coady, CSI, CCPR; Guardian Industries Corp.; member since 1994
- Phil Damiano, CSI; Johnson Air Products; member since 2015 - **NEW**
- Donald Eggleston, CSI; SERA Architects, P.C.; member since 1970
- David Grigsby, CSI; ZGF Architects LLP; member since 2012
- Ron Huld, CSI, LEED AP; Architect; member since 1997
- Jeff Humphreys, CSI, CDT, LEED AP; Group MacKenzie; member since 2004
- Brian Keil, CSI, CCPR; The Sherwin Williams Company; member since 1996
- John Kouba, CSI; Malarkey Roofing Products; member since 2001
- Michael Lemen, CSI, CDT; Metl-Span; member since 2015 (Reinstated)
- Alan Loftesness, CSI; A-Tech/Northwest, Inc.; member since 1979
- Jim Mitchell, CSI, USGBC; Koroseal Interior Products Group; member since 1992
- Corey Morris, CSI, CDT, NCARB; Carleton Hart Architecture; member since 1998
- David Pugh Jr., CSI; Giffin Bolte Jurgens; member since 2006
- Logan Raivio, CSI-EP; Pacific Architectural Products; member since 2013
- Patrick Ravins, CSI; Maxxon Northwest; member since 2015 (Reinstated)
- Erl Thorgalsen, CSI; RTB Company; member since 1998
- Scott Tyson, CSI, CDT; Sika Corporation; member since 2002
- Christopher Veit, CSI, CCS; Carlson/Veit Architects, P.C.; member since 1983
- Terry Wildeboer, CSI; Isolatek International; member since 1991
- Stephen Wobber, CSI, CDT; Ashvine Products; member since 1993

## CSI NATIONAL NEWS

### Election Time

*Sheldon Wolfe, RA, FCSI, CCS, CCCA, CSC*



I remember, as a new CSI member, being somewhat confused by our election process. Having been a voter for many years, I knew that the US president did not take office immediately, but was a president-elect for a short time. So it seemed strange that, instead of voting for the next president of CSI, we vote for a person who won't take office as president

for at least a year. The other problem had nothing to do with the process; I simply didn't know who was running for office! But we'll get to that later. [READ MORE >](#)

### CSI Willamette Valley Product Show



Happy New Year! Greetings from the Willamette Valley Chapter of CSI. We hope you had a wonderful time over the holidays. Every year at its beginning the Willamette Valley Chapter hosts its annual Conference and Product Show at the Hilton Hotel in Eugene, OR. Your company may or may not have participated in

the past. Please find attached information and promotional material for this year's conference on February 25. We hope to have peaked your interest and you consider participating. [FOR MORE INFORMATION >](#)

## INDUSTRY NEWS

### Building Controls Debate: What Building Automation System Works Best for Your Facility?

*Presented by IFMA*



Have you ever wondered about the difference between a proprietary and non-proprietary controls system?

How do you make a decision on what system to invest in?

How do you plan for the future and the ever changing world of controls technology?

January 20, 2016 from 11:30A - 1:00 PM at Widmer Brewery  
Featuring Panel Participants from Trane, Siemens & MacDonald-Miller Facility Solutions. [REGISTER HERE >](#)

### Cross Laminated Timber: Lessons Learned from Current Work

*Presented by AIA Portland*



January 20, 2016 from 12-2 PM  
AIA Portland  
2 CEH/HSW credits earned  
AIA Member/SEAO/AGC \$50, Non-member \$70  
[REGISTER HERE >](#)

### CANstruction

*Presented by SDA Portland*



We are pleased to announce our 20th Year CANstruction Competition will be moving to September! This change comes as we want to align with the Oregon Food Bank's "Hunger Awareness Month". Due to the competition moving, we are postponing the Kickoff Meeting until April; we will send you the exact time and date soon. We so look forward to seeing your ideas and imagination come to life! [If you have any questions, please contact us HERE >](#)

*CSI's mission it to advance building information management and education of project teams to improve facility performance. We are the only organization that brings together all the players in the built industry.*



[About](#) | [Join](#) | [Attend](#) | [Contact](#)



VOLUME 56 | ISSUE 2 | **FEBRUARY 2016**

[\*\*Got News?\*\*](#)

IN THE SPOTLIGHT

## February Chapter Meeting: Grill the Estimator

*Alicia Clark, CSI-EP, Programs Chair*



Join meeting with ASPE  
Tuesday, February 9th from 5:30 to 8:00 PM  
Elephant's on Corbett, 5221 SW Corbett Avenue,  
Portland  
Panelists: Steve Clapp, Hoffman Construction; Steve  
Kelly, Rider Levett Bucknall, Mike Reed, Market  
Contractors; Jim Carkin, Emerick Construction

We are busy getting ready for the Grill the Estimator in February. Tweet me any questions you might have for our panel of esteemed estimators to @AliClarkpdx. This will be a good opportunity for designers to understand how estimators put a bid together and for product reps to ask why contractors don't use their product even though it is specified. There are a lot of different ways estimators prepare a bid, and most people outside of the contractor's office don't get to peak behind the curtain, so this is your chance! [REGISTER TODAY >](#)

PRESIDENT'S MESSAGE

## President's Message: Are You Reaching Out?

*Cherise Lakeside, CSI, CDT, Chapter President*

Most of my connections here are in Architecture, Engineering and Construction. Almost all of us belong to some sort of industry organization. Whether it is AIA, CSI, ASHRAE, AGC, ASPE, BEC or any of the others out there, we join these organizations to network and learn

### In this Issue

February Chapter Meeting: Grill the Estimator

President's Message: Are You Reaching Out?

Construction Forecast Take-Aways

Industry Forum 2016: Keynote Announced

Key Clauses of the General Conditions

Save the Dates

Construction Forecast Take-Aways

Certification Self-Study Materials Available

It's Election Season

New & Renewed Members

CSI Willamette Valley Product Show

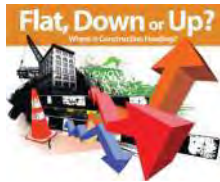


from our peers. [READ MORE >](#)

## CSI PORTLAND NEWS

### Construction Forecast Take-Aways

*Alicia Clark, CSI-EP, Programs Committee Chair*



Last month's 2016 Construction Forecast was a great event with nearly 90 people attending. In a nutshell, the economy in the Northwest is looking good, but there will be some variations in the different market segments, so make sure to check out the [video of the presentation](#) on the Portland CSI YouTube Channel if

you missed it.

### Industry Forum 2016: Keynote Announced

*Tony Divincenzo, CSI, IF Committee Chair*



Plans for the 2016 Industry Forum, Theory of Practice, on May 11, 2016 are well underway! We are pleased to offer this opportunity to the community! This is the construction industry event of the year you do not want to miss!

We're proud to announce this year's keynote speaker - nationally-renowned architect and urban designer [Robert "Rob" Rogers](#), FAIA of New Your City's [Rogers Partners](#). Rob creates institutional and cultural buildings that are civic works. Believing that even a single building is a piece of urban design and that every surface deserves intimate attention, his work assertively and elegantly combines urbanism and architecture. From reinventing the security bollard to redesigning a subtle icon on the National Mall, Rob continually elevates accepted conventions in his quest to develop intelligent, rich and timeless contributions to our physical environment. Rob graduated from the Harvard Graduate School of Design with a Masters of Design Studies with Distinction.

[LEARN MORE HERE >](#)

[SIGN UP AS SPONSOR HERE >](#)

[REGISTER TO ATTEND HERE >](#)

### Key Clauses of the General Conditions; Complementary

*Sheldon Wolfe, RA, FCSI, CCS, CCCA, CSC*



Although it didn't seem like it at the time, one of the best parts of my CSI chapter's certification classes was reading the A201 - not selectively, but the whole thing, beginning to end. Being the heart of the construction contract, anyone who works on a project should know what's in it. I can't quote every part of it, but it's familiar enough that I can find what I'm looking for fairly quickly. I don't deal with much of it,

CSI West by Northwest  
Bi-Region Conference

ASPE: Our Estimating  
Industry Partner

ASPE Presents Grill the  
Architect

## Upcoming Events

### February 3

[CDT Classes Start](#)

6:00-8:00 PM

Ankrom Moisan Architects

### February 9

[Chapter Meeting Grill the Estimator](#)

5:30-8:00 PM

Elephant's on Corbett

### February 25

CSI Willamette Valley

Product Show

### March 9

Chapter Meeting

Multi-Generational Panel

### April 12

Chapter Meeting:

Design/Build, Design

Assist, Delegated Design

### May 11

[CSI Industry Forum:](#)

Theory of Practice

Portland Art Museum

### May 18-22

[CSI Bi-Region Conference](#)

[& Leadership Training](#)

Hyatt Regency Lake

Tahoe, NV

### June 14

CSI Annual Chili Cook-off

and Awards

### July 12

CSI Annual Architectural

Scavenger Hunt

## CSI Sponsors

[Support CSI, Learn How Here >](#)



e.g., claims and time requirements, but there are a few parts that I find of particular interest. We'll start with what I call the complementary clause. [READ MORE >](#)

## Save the Date

*Alicia Clark, CSI-EP, Program Committee Chair*



March 9, 2016

Project Delivery: Why do we use them/What do they all mean?

(Joint Meeting with DBIA)

What are the new trends in project delivery and where is the risk getting pushed to?

April 12, 2016

Multi-Generational Panel: Design/Construction and the Changing of the Guard Speed Mentoring Event

Baby Boomers are retiring, Millennials are entering the workforce in-mass, and the recession threw a wrench in the whole system.

May 11, 2016

Industry Forum 2016: The Theory of Practice

See below for more information about keynote and registration

June 14, 2016

Fourth Annual Chili Cook-Off and Awards Night

Start practicing those chili recipes and getting your teams together!

July 12, 2016

Annual Architectural Scavenger Hunt (FREE EVENT!)

Put your thinking cap, grab the map and the clues, and come test your architectural knowledge!

Sponsorship Opportunities Available! Contact [Ali Clark](#) for more details!

## EDUCATION

### Webinars Abound

*Jake Lamanna, CSI-EP, Education Committee Chair*



Did you know that CSI National has over 40 webinars available on demand? Did you know that some of those webinars are free to CSI members? Just visit our national website, go to the Education tab and select webinars. You can gain access to almost a dozen free webinars, as well as two dozen additional webinars available for order. Schedule one for the office and gain critical insight to industry knowledge and CEUs.

There are also live webinars scheduled monthly, where you and your office can attend and ask the presenter questions directly. Check the webinar page frequently to see new offerings or for past offerings available whenever you need them! [GO TO WEBINARS >](#)

## CERTIFICATION

### Certification Self-Study Materials Available

*Kathy Hempel, CSI, CCA, Certification Committee Member*



Did you know that you don't have to be a member of The Construction Specifications Institute to take the CDT exam or classes? You can earn AIA CES and CSI CEN learning units while furthering your knowledge on the construction process.

Interested in taking the exam, but can't make the classes? National's website has a list of self-study materials that will help you learn all of the valuable information you'll need to breeze through the exam (and excel in the construction industry!).

Studying for the CDT exam provides a thorough overview of the design and construction process. You'll get an understanding of contractual agreements, roles, responsibilities, and construction delivery systems as well as how to consistently develop organized, effective construction documents. [GO TO EXAM PREP >](#)

Although the early bird rates for the exam have passed, you can still sign up to take the exam. CSI's National website has been updated with the spring exam information. [SEE EXAM INFO >](#)

Contact the committee if you would like more information on what your options are. Cherise Lakeside at [cherises@ankrommoisan.com](mailto:cherises@ankrommoisan.com) or Rick Heiserman at [rckh@ankrommoisan.com](mailto:rckh@ankrommoisan.com).

## MEMBERSHIP

### It's Election Season

*Christine Irwin, CSI, Past Board President, Nominations Chair*



The Portland Chapter of CSI has been recognized as one of the most innovative and outstanding CSI Chapters in the country. In order to keep the momentum going, the Chapter needs strong leaders. Nominations are currently open for several CSI Portland

Board positions, including President-Elect, Secretary and Director. Please see below for descriptions of the open positions:

#### PRESIDENT-ELECT

Term: One or two years

General Duties:

1. As successor to President, President-Elect should become familiar with procedures and requirements of office. President-Elect performs assignments and duties as required by President and Board.
2. President-Elect serves upon absence of President.
3. President-Elect compiles newsletter content.

#### SECRETARY

Term: Two years

General Duties: Function of Secretary is indispensable to Chapter operations. Secretary serves on Chapter Board, participates in policy-making and translates it into action. Secretary's minutes serve as Chapter's records and history. Accurate and up-to-date minutes and Chapter records are highly important. As the only written record of Chapter activities, minutes are accepted as legal evidence of resolutions and actions taken.

Responsibilities:

1. Record, prepare and distribute minutes of Board, Chapter and

- other meetings where applicable.
2. Maintain a permanent Chapter file of correspondence, membership records, meeting minutes, and Chapter newsletters and other non-technical Chapter publications.
  3. Assist President in preparing agendas for meetings.
  4. Be thoroughly conversant with Regulations for Annual Meetings of The Institute, especially as they pertain to duties assigned to Secretary.
  5. Prepare an Annual Report of the Chapter at the close of each fiscal year.
  6. Assure prompt Chapter correspondence with Institute office, Region Officers, other Chapters, etc.

## DIRECTORS

### General Duties:

1. Chapter directors are normally potential officers of Chapter. As members of Chapter Board, they are an integral part of the governing body of the Chapter. It is recommended that directors monitor and be acquainted with committees listed in the Operations Guide and become a member of a committee.
2. It is recommended that ad hoc and special committees be chaired by a director.
3. Directors are also assigned committee(s) to oversee and report their status at Board meetings.

If you are interested in honing your leadership skills, serving the Portland Chapter and helping to determine the course of the future of CSI please contact Chris Irwin at [christineirwin@comcast.net](mailto:christineirwin@comcast.net).

## New & Renewed Members - November 2015

*Lee Kilbourn, FCSI, FAIA, Membership Chair*

- J. Laurence Chew, CSI, CCS, Retired; JLC Architectural Consulting; member since 1989
- James Cundiff, CSI; Cundiff Engineering, Inc.; member since 1989
- Jeremy Fern, CSI; Keene Building Products; member since 2015 - **NEW**
- John Herrmann, CSI, CDT; Bain Associates, Inc. ; member since 1991
- Gregory Hranac, RA, CSI, CCS; US Fish & Wildlife Service; member since 1998
- Stephen Hubbard, CSI; Mutual Materials Company ; member since 1993
- David Ingraham, CSI; Willamette Graystone; member since 2014
- Richard Jermain, CSI, CDT, AHC; Allegion; member since 2004
- Clarke Jewell, CSI, CDT; Olympian Precast, Inc. ; member since 1999
- Christopher Muck, CSI; The Sansin Corporation; member since 2015 -**NEW**
- David Schulman, CSI, CDT; Portland Millwork; member since 2013
- Walt Suman, CSI, CDT; TekTerrior Systems ; member since 1985
- Toby White, CSI; Forensic Building Consultants; member since 2004
- Wendi Ziegler, CSI; Inpro; member since 2015

Emeritus member anniversaries, October and November:

- J. Min "Jimmy" Luey, CSI; member since October 1968

- Ivan McCormick, CSI, CDT; member since October 1971
- James Davidson, CSI; member since October 1977
- H. Curtis Finch, CSI, FAIA; member since October 1978
- Richard Gira, CSI, CDT; member since November 1978

## CSI NATIONAL NEWS

### CSI Willamette Valley Product Show



Happy New Year! Greetings from the Willamette Valley Chapter of CSI. We hope you had a wonderful time over the holidays. Every year at its beginning the Willamette Valley Chapter hosts its annual Conference and Product Show at the Hilton Hotel in Eugene, OR.

Your company may or may not have participated in the past. Please find attached information and promotional material for this year's conference on February 25. We hope to have peaked your interest and you consider participating. [FOR MORE INFORMATION >](#)

### CSI West by Northwest Bi-Region Conference

*Marni Vincent, AIA, CID, CKD, CSI, CDT, Event Chair*



The CSI West by NorthWest Bi-Region conference is being held May 18-22, 2016 at the Hyatt Resort at Incline, Lake Tahoe. There will be three or more tracks of education and leadership skills loads of opportunities to network and share your latest and greatest products as well as learn from your peers.

There will be an all day tour of the Univeristy of Nevada at Reno with a special segment of the earthquake testing facility sponsored by Miyamoto International Engineering with Bob Glasgow, Principal of Miyamoto International Engineering, as our guest speaker. Check out all our wonderful events [HERE >](#)

We look forward to your participation and attendance. There are still sponsorship opportunities available as well as registration forms.

## INDUSTRY NEWS

### ASPE: Our Estimating Industry Partner

*Ellen Onstad, CSI, President-Elect*



American Society of Professional Estimators Columbia Pacific Chapter 54  
 "Providing Construction Estimators in the Pacific Northwest with Education, Fellowship, and Opportunity for Professional Development"

In this constantly changing world, continuing our education is one way we can keep abreast of advances in estimating and construction techniques. At the Portland Chapter, we know it takes a village to complete a project. And it takes a village to provide valuable services to the industry. This is why we like to collaborate and partner with other associations in our field. This month, we are jointly hosting our chapter meeting with The American Society of Professional Estimators (ASPE)

ASPE encourages a wide range of educational activities that provide learning experiences for estimators at all experience levels. ASPE Chapter meetings include educational talks and mini-seminars on estimating and other construction related topics. And they hold seminars that provide educational benefits for members and non-members alike. These range from two-hour, single topic meetings to seminars lasting two days and covering a variety of construction and estimating topics. [LEARN MORE HERE >](#)

## Grill the Architect: A New Kind of Cook Book

*Presented by ASPE*



Tuesday, February 16, 2016  
University Place, 310 SW Lincoln, Portland

Celebrity Guest Panel  
David Staczek, ZGF Architects  
Julie Bronder, ZGF Architects

It's a love-hate relationship. The construction trades (aka "builders") need architects to show them what needs to be built and the level of quality. And architects need builders to turn their concepts into functioning realities. But why all the contentiousness in arriving at this mutual goal? This is your opportunity to find out why you must risk your company's economic future on what appears to be an incomplete, contradictory, or risky set of bidding documents. [REGISTER HERE >](#)

CSI's mission is to advance building information management and education of project teams to improve facility performance. We are the only organization that brings together all the players in the built industry.

### [Forward this email](#)



This email was sent to jlamanna@walshconstructionco.com by [portlandcsi@gmail.com](mailto:portlandcsi@gmail.com) | [Update Profile/Email Address](#) | Rapid removal with [SafeUnsubscribe™](#) | [About our service provider.](#)

Portland Chapter CSI | PO Box 6683 | Portland | OR | 97228



[About](#) | [Join](#) | [Attend](#) | [Contact](#)



VOLUME 56 | ISSUE 3 | **MARCH 2016**

[\*\*Got News?\*\*](#)

IN THE SPOTLIGHT

## March Chapter Meeting: Project Delivery Best Practices

*Alicia Clark, CSI-EP, Programs Chair*

Tuesday, March 8th from 5:30 to 8:00 PM  
Widmer Brewery, 947 N Russell Street, Portland  
Panelists: Mike Day, Doug Garland, Glen Schnaidt, Herb Yamamoto, Summer Gorder

What are the new trends in project delivery and where is the risk getting pushed to? A panel of experts will be presenting the topic of project delivery methods and implementation of best practices.

The discussion will cover the four most popular delivery methods - CM/GC, Design-Build, Design-Bid-Build, and IPD (Integrated Project Delivery) as well as the pros and cons of each. Subjects such as Building Information Modeling (BIM), Target Value Design (TVD), technology integration tools for project implementation, lean processes to reduce waste, and how to effectively integrate the O & M phase of operations and maintenance into the turnover of the project.

Learn from present and past experiences from this panel of experts, on how become more equipped to deliver projects with successful outcomes. [REGISTER TODAY >](#)

PRESIDENT'S MESSAGE

## President's Message:

*Cherise Lakeside, CSI, CDT, Chapter President*



### In this Issue

- February Chapter Meeting: Grill the Estimator
- President's Message: Are You Reaching Out?
- Construction Forecast Take-Aways
- Industry Forum 2016: Keynote Announced
- Key Clauses of the General Conditions
- Save the Dates
- Construction Forecast Take-Aways
- It's Election Season
- New & Renewed Members
- CSI West by Northwest Bi-Region Conference
- ASPE Presents Grill the Architect



Four months remain in my term as Portland CSI President. In October (Halloween), I will celebrate five years as a member of CSI. As I reflect on my somewhat wild ride in CSI over the last 4-1/2 years, and I look to the future for what I would like to do next in this organization, I find myself evaluating my successes, failures and lessons learned. [READ MORE >](#)

## CSI PORTLAND NEWS

### Grill the Estimator Take-Aways

*Alicia Clark, CSI-EP, Programs Committee Chair*



The estimating "barbeque" last month was a great success! A few of my favorite takeaways are:

1. Estimators are the linemen of the construction company, not as flashy as the quarterback (project manager), but without them you will never move the ball up the field.
2. Subcontractors and suppliers need to make sure they get substitutions and scope letters to the general contractor (GC) as early as possible if they want to be included in a project.
3. Architects need to understand that in a hard-bid situation, the estimator has to go for the jugular. They are going to bid the exact thing the documents tell them to and there isn't any wiggle room for interpreting intention.

You can check out a full recap of the twitter feed at [sfy.co/i1HX7](http://sfy.co/i1HX7) and the video is posted on your YouTube channel at [\(link to follow\)](#).

Thank you to ASPE

In February, we had a lively discussion with a panel of estimators for our Grill the Estimator dinner meeting. The following week the American Society of Professional Estimators (ASPE) Columbia Pacific Chapter #54 had a dinner presentation on Grill the Architect. Their panel included Kristina Thompson and Julie Bronder from ZGF Architects and Isaac Tevet from AMAA. The moderator was ASPE President Steve Clapp from Hoffman Construction. Cherise and I were tweeting out questions and answers. It was interesting to hear from estimators and then architects all in the same week. This is truly why we share knowledge for creating and sustaining the built environment.

### Industry Forum and Portland BEC Team up for More

*Tony Divincenzo, CSI, IF Committee Chair*



Portland CSI is excited to announce a partnership with Portland BEC (Building Enclosure Council) for the 2016 Industry Forum! BEC's annual Symposium attracts attendees from around our region for a day-long focus on building technology. This year, the BEC Symposium will be held in conjunction with the Industry Forum, giving you more event, more education and more opportunities to get involved!

#### More event

Start off the day with the BEC Symposium (7 CEUs)

## Upcoming Events

### March 1

Wall Assemblies:  
Control Layers  
BEC Portland  
12:00 PM  
Mercy Corps

### March 9

[CSI Chapter Meeting](#)  
[Project Delivery Best Practices](#)  
5:30-8:30 PM  
Widmer Brewery

### March 9

[Masonry](#)  
[Troubleshooting: Identifying Problems and Solutions](#)  
AIA Portland

### March 22

[CSI Learning & Libations](#)  
Getting Started with ARE  
5:30 PM  
Walsh Construction

### April 12

[CSI Chapter Meeting](#)  
[Learning about Lents](#)  
5:30-8:30 PM  
The DoubleTree at Lloyd Center

### April 26

[Innovative Technologies for Sustainable Building](#)  
8A-5:30P  
Embassy Suites

### May 11

[CSI Industry Forum: Theory of Practice](#)  
Portland Art Museum

### May 18-22

[CSI Bi-Region Conference & Leadership Training](#)  
Hyatt Regency Lake Tahoe, NV

### June 14

CSI Annual Chili Cook-off and Awards

### July 12

CSI Annual Architectural Scavenger Hunt

CSI Sponsors

- 7:00 Registration / Breakfast
- 8:05 Welcome Address, Joe Lstiburek, forensic engineer, founding principal of Building Science Corporation
- 8:15 Education Session 1
- 9:15 Break
- 9:45 Education Session 2
- 10:45 Education Session 3
- 11:45 Lunch
- 12:45 Education Session 4
- 1:45 Education Session 5
- 3:00 Closing

[Support CSI, Learn How Here >](#)

Then continue with the Industry Forum (2 CEUs)

- 4:00 Registration
- 4:30 6x10 Presentations
- 5:30 Networking
- 7:00 Keynote speaker, renowned architect Rob Rogers of Rogers Partners.

### **More ways to attend**

Attend all events with a full-day registration for only \$65! You get all five BEC Educational Sessions, continental breakfast, seated lunch and "heavy appetizer" dinner, plus full admittance to all Industry Forum sessions and keynote presentation. Partial day admission is also available. Click [HERE](#) to buy tickets.  
<http://conta.cc/1PvfMhZ>

### **More sponsorship opportunities**

Sponsorship opportunities for Full Event, Lunch and Break sponsorships are now available. All levels of sponsorship include promotion on event materials from Portland BEC and Portland CSI. Most levels include an exhibit table for the entire day, putting you in front of more attendees and giving you more face time with potential customers. Full Event and Platinum Sponsors will also be invited to an exclusive event with our keynote speakers, a unique opportunity to network with key industry leaders and our distinguished guests.

[LEARN MORE HERE >](#)

[SIGN UP AS SPONSOR HERE >](#)

[REGISTER TO ATTEND HERE >](#)

## **Key Clauses of the General Conditions; Means and Methods**

*Sheldon Wolfe, RA, FCSI, CCS, CCA, CSC*



In the last post, we looked at the complementary clause, and saw how powerful it can be; we also looked at the limits of that power. Many architects know of that clause, and I have occasionally heard it cited, something like this: "I don't care if there is no specification for it; it's on the drawings, and you have to provide it!" In the same conversation, it wouldn't be unusual to hear, "No, I don't know how you're going to do it - that's means and methods!" Although architects aren't shy about citing "means and methods" it seems many of them don't understand the full impact of what they're referring to. Turning again to the AIA A201, here's what Article 3 says (my italics). [READ MORE >](#)



## Save the Date

*Alicia Clark, CSI-EP, Program Committee Chair*



April 12, 2016

TOPIC CHANGE: Learning about Lents  
A Panel on Growth and Development within the Lents  
Neighborhood

May 11, 2016

Industry Forum 2016: The Theory of Practice

June 14, 2016

Fourth Annual Chili Cook-Off and Awards Night

Start practicing those chili recipes and getting your teams together!

July 12, 2016

Annual Architectural Scavenger Hunt (FREE EVENT!)

Put your thinking cap, grab the map and the clues, and come test your architectural knowledge!

Sponsorship Opportunities Available! Contact [Ali Clark](#) for more details!

### EDUCATION

## pdxCSI Learning & Libations Nights

*Jake Lamanna, CSI-EP, Education Committee Chair*



Spring brings with it fresh starts and new beginnings. It is in this spirit that we announce the pdxCSI Learning and Libations Nights educational series. Formerly known as the Seminar Series, the Learning and Libations Nights will be a year-long series of educational events, many still paired with pizza and beer.

We are expanding our offerings from lectures and panel discussions to include on-site building tours, emerging professional social hours, and "vertical flights" where we will discuss a topic from beginner to expert understanding over the course of a few weeks. Kicking us off is a presentation on Architect Registration Examination (ARE) by Mike Riscica, a Portland-based Architect and founder of the website Young Architect.com.

Getting Started with ARE by Mike Riscica

Tuesday, March 22nd, at 5:30 PM

Cost: \$10 includes pizza and beer (good beer)

Walsh Construction Company, Forster Conference Room

Preparation for the ARE can be intimidating to say the least, and even more so if/when you fail one of your 7 (or is it 5?) exams. Mike Riscica's presentation will

- Help you navigate the changes between ARE 4.0 and ARE 5.0
- Introduce tips and tricks to aide in your successfully studying for the ARE while working 40 hours a week
- Answer commonly asked questions about the ARE
- Identify the best study materials

Come join us for pizza and a brew, and some learning too!

[REGISTER HERE >](#)

## MEMBERSHIP

### Who Makes Up CSI

*Leslie Case, CSI, Board Director, Publicity Chair*



Membership has its advantages, and joining CSI Portland Chapter is one way to experience those advantages! Our membership is comprised of a variety of disciplines ranging from architects, specifiers, contractors, and engineers. CSI is about complete project delivery offering education, networking and specification collaboration within the built industry. CSI

brings all members of the project team to the table. All disciplines are equal members in CSI.

Portland's Chapter is one of the largest in the country with over 260 members and is always looking to add to the mix below:

Architect	70
Engineering	14
Subcontractor	21
Manufacturer's Representative/Supplier	110
Specifier/Estimator	24
General Contractor	18
Publisher	6

### New & Renewed Members - December 2015

*Lee Kilbourn, FCSI, FAIA, Membership Chair*

- Scott Tice, CSI; Tice Industries, Inc; member since 2002
- Randy Tessman, CPA, CSI, CDT; Benjamin Moore Paints; member since 1995
- Robert "Wick" Temple, CSI; Hafele America Co.; member since 2012
- Mark Schneider, CSI; CSAF LLC; member since 1997
- Caitlin Reed, CSI-EP; Interface Engineering; member since 2015 - **NEW**
- Mike Murphy, CSI, CCPR; Behr Paint; member since 2006
- Joseph McMillen, CSI-EP, CET; RDHBE (Building Envelope); member since 2014
- Mike Manzi, RA, CSI, CDT, LEED AP; Boora Architects; member since 2010
- John Lamb, CSI; Structural Waterproofing Consultants, LLC; member since 1983
- J. "Jan" Knott, CSI; Retired; member since 1983
- Bassam Khalifeh, CSI; Washington County - Facilities; member since 1989
- Linda Joens, CSI; Cambria; member since 2007
- Tzvetan "TZ" Hristov, CSI; AIREFCO; member since 2015 -**NEW**
- Amy Hjelte, CSI, CCS; LRS Architects, Inc.; member since 2002
- Russell Harrison, CSI; Window Tech, Inc.; member since 2014
- Colin Doherty, CSI, CCS; Port of Portland; member since 2009
- Thaniel Davis, CSI, CDT; Deamor Associates; member since 2015
- Rod Clark, CSI, CDT; Therma-TRU; member since 2005
- Alicia Clark, CSI, CDT; Emerick; member since 2012
- Eric Bressman, CSI, CCCA; Ankrom Moisan; member since 2012

- Loren Boeckman, CSI; Alliance Window Co. Inc.; member since 2012
- Tana Bishop, CSI; Contractor Plan Center, Inc.; member since 1999
- Jaci Amend, CSI; Melvin Mark Companies; member since 2013

Emeritus Member Anniversaries, December

- D.R. "Skip" Brown III, CSI, CCS, AIA

## CSI NATIONAL NEWS

### CSI West by Northwest Bi-Region Conference

*Marni Vincent, AIA, CID, CKD, CSI, CDT, Event Chair*



The CSI West by NorthWest Bi-Region conference is being held May 18-22, 2016 at the Hyatt Resort at Incline, Lake Tahoe. There will be three or more tracks of education and leadership skills loads of opportunities to network and share your latest and greatest products as well as learn from your peers.

There will be an all day tour of the Univeristy of Nevada at Reno with a special segment of the earthquake testing facility sponsored by Miyamoto International Engineering with Bob Glasgow, Principal of Miyamoto International Engineering, as our guest speaker. Check out all our wonderful events [HERE >](#)

We look forward to your participation and attendance. There are still sponsorship opportunities available as well as registration forms.

## INDUSTRY NEWS

### Desing Build Association of America: Who Are They and What Does That Mean?



Our March Chapter Meeting is a presentation on the Design-Build Delivery system. We are pleased to offer this valuable information in a joint meeting and highlight one of our industry partners.

**What is Design-Build?**

Design-Build is a moth of project delivery in which one entity - the design-build team - works under a single contract with the project owner to provide design and construction services. One entity, one contract, one unified flow of work from initial concept through completion, thereby re-integrating the roles of designer and constructor.

Design-build is an alternative to the traditional design-bid-build project delivery method. Under the latter approach, design and construction services are split into separate entities, separate contracts, separate work. Across the country and around the world, design-build successfully delivers both horizontal and vertical construction projects with superior results - no matter what the project type.

Streamlining project delivery through a single contract between the owner and the design-build team transforms the relationship between designers and builders into an alliance, which fosters collaboration and teamwork. United from the outset of every project, an integrated team

readily works to successfully complete a project faster, more cost effectively and with fewer change orders.

Further information on the Design Build Institute of America can be found at <http://www.dbia.org>.

## New Design/Construction Event Website



If you are looking for other design and construction-related events in Portland, there is a new website to find them all in one place. Portland Design Events is a brand new website that is a one-stop-shop for all architecture and design-related events in Portland.

It shows all the events going on in town in a list, calendar, or map format, and has links to all the Portland design-related professional organizations (including CSI), blogs, and non-profits. It will also have a blog announcing local design competitions for all you architects out there. It is a great site to check out, and Portland CSI will be posting all of our upcoming events to it, although you will always be able to check our upcoming events on our home page. [VISIT WEBSITE HERE >](#)

## Innovative Technologies for Sustainable Building

April 26, 2016 from 8 AM to 5:30 PM  
Embassy Suites, 319 SW Pine Street, Portland  
EARLY BIRD SPECIAL BEFORE APRIL 8th

- Continental Breakfast and Hot Lunch included
- Half-Day Options available AM or PM (4 Credits + lunch)

AM

- Moisture Management in Tiled Showers
- Green Concrete
- Acetylated Wood: Durable, Stable, Sustainable
- Introduction to Water Source Heat Pump Systems

PM

- Use of Snow Retention Devices: Science or Science Fiction ?
- Architectural Room Acoustics
- Ceramic Tile and Stone Installation Basics
- Understanding Concrete Curing and Adhesive Compatibility

[LEARN MORE OR REGISTER HERE >](#)

## Upcoming Industry Educational Events

For many of you, a once monthly educational session through your local Portland Chapter of CSI isn't quite enough to satiate your ever-expanding appetite for knowledge of all things construction and design. Please check out some of our partner organizations offerings



Wall Assemblies: Control Layers presented by BEC Portland  
Tuesday, March 1, 2016 at noon  
Mercy Corps Building  
Presenter: Stevan Vinci, Morrison Hershfield

This presentation will focus on the fundamentals of wall assembly design, with emphasis on the control layers that separate exterior and interior environment.



Masonry Troubleshooting: Identifying Problems and Solutions presented by AIA Portland  
Wednesday, March 9, 2016 at noon

Presenter: Ken McKinney, International Masonry Institute

This course is available for 2 AIA HSW continuing education credits, at an AIA member price of \$27.37 (non-member \$37.92). It will cover the design, detailing, installation, and maintenance of the more durable cladding materials, such as brick, concrete, and stone. Special emphasis is placed on specific problems and how to avoid them and/or correct them. Please check out the full course description [HERE >](#)

CSI's mission it to advance building information management and education of project teams to improve facility performance. We are the only organization that brings together all the players in the built industry.

[Forward this email](#)



This email was sent to jlamanna@walshconstructionco.com by [portlandcsi@gmail.com](mailto:portlandcsi@gmail.com) | [Update Profile/Email Address](#) | Rapid removal with [SafeUnsubscribe™](#) | [About our service provider.](#)

Portland Chapter CSI | PO Box 6683 | Portland | OR | 97228



[About](#) | [Join](#) | [Attend](#) | [Contact](#)



VOLUME 56 | ISSUE 3 | **APRIL 2016**

[Got News?](#)

IN THE SPOTLIGHT

## April Chapter Meeting: Learning about Lents

*Alicia Clark, CSI-EP, Programs Chair*



April 12, 2016 at 5:30 PM

Four PDC-led projects are being planned for the Lents Neighborhood. These projects include an office building, apartment building, and two mix-use developments.

Come learn about each project from our panel designers representing the four architecture firms working on the projects: Holst, Carleton Hart, Ankrom Moisan, and Hacker.

[REGISTER TODAY >](#)



Member Orientation

And don't forget about our event preceding our meeting--Member Orientation. Each year Portland Chapter CSI holds an event for all new members and members who are interested in learning more about

CSI. It is good way for us to meet you and for you to know who to contact when you have questions about CSI. Take this opportunity to meet your Board and Committee Chairs and other officers of the Portland Chapter CSI and to receive your new member pin. Orientation is held at the same venue beginning at 4:30 PM and is a free event. [RSVP HERE >](#)

PRESIDENT'S MESSAGE

## President's Message: What Sets CONSTRUCT Apart

*Cherise Lakeside, CSI, CDT, Chapter President*

My assignment this month in my 2nd year as the Official CONSTRUCT



**In this Issue**

April Chapter Meeting: Learning about Lents

President's Message: What Sets CONSTRUCT Apart?

March Chapter Meeting Take-Aways: Project Delivery Methods

Industry Forum / BEC Symposium 2016

New Uses for Old Things

Let the Golfing Begin

Save the Dates

Learning & Libations Series: BIM

Key Clauses of the General Conditions

New & Renewed Members

CSI Messages: Who We



blogger is to share what I think sets CONSTRUCT apart from other industry shows.

This assignment has been a bit of a struggle since I have written, on multiple occasions, about what makes both CSI and CONSTRUCT special. What could I say that is new and fresh that will accurately portray the benefits of this event? How can I adequately express

why this is my #1 choice among all the shows and educational events that are offered in our industry? [READ MORE >](#)

## CSI PORTLAND NEWS

### Industry Forum/BEC Symposium is Almost Here

*Corey Morris, AIA, CSI, Board Secretary*



Next month is your opportunity to enjoy two great events in one action-packed day.

**BEC Symposium - 7A to 3P**

Keynote: Joe Lstiburek, Building Science Corp.

Tickets: \$75 including lunch

Topics include:

Energy modeling vs. actual performance

Energy performance through enclosure retrofits

Lessons learned from energy retrofits

**Industry Forum: Theory & Practice - 4P to 8P**

Keynote: Rob Rogers, Rogers Partners

Tickets: \$25 including appetizer buffet

Topics include:

Unique 6x10 presentations

Networking and vendor education

[REGISTER HERE >](#)

[BE AN EXHIBITOR HERE >](#)

### March Chapter Meeting Take-Aways

*Alicia Clark, CSI-EP, Program Committee Chair*



Last month's meeting covered a lot of ground on project delivery methods, BIM modeling/technology, sustainable design, O&M and the integration with the facility. It was a challenging topic to cover in the time that we had, but I highly recommend checking out the video on the

Are and What We Do

CSI West by Northwest Bi-Region Conference

CANstruction: Call for Entry

Innovative Technologies for Sustainable Building

## Upcoming Events

**April 12**

[CSI Member Orientation](#)

4:30-5:30 PM

The DoubleTree at Lloyd Center

**April 12**

[CSI Chapter Meeting](#)

[Learning about Lents](#)

5:30-8:30 PM

The DoubleTree at Lloyd Center

**April 20**

[Learning & Libation](#)

[Series: BIM and the](#)

[Human Element](#)

5:30-7:30

Walsh Construction

**April 26**

[Innovative Technologies](#)

[for Sustainable Building](#)

8A-5:30P

Embassy Suites

**May 11**

[BEC Industry Symposium](#)

[& CSI Industry Forum:](#)

[Theory of Practice](#)

Portland Art Museum

**May 18-22**

[CSI Bi-Region](#)

[Conference & Leadership](#)

[Training](#)

Hyatt Regency Lake

Tahoe, NV

**May 25**

Learning & Libations

Series: LIDAR an

introduction

5:30-7:30 PM

Walsh Construction

**June 14**

[CSI Annual Chili Cook-off and Awards](#)

4:30-8:30 PM

EcoTrust building

[Portland CSI YouTube Channel](#) and the Storify of conversation on Twitter. Here are my three big takeaways:

1. Communication Failures are the #1 pick as to why projects fail. Choosing the right project delivery method can go a long way to change the separate combative project teams into a collaborative unit.
2. Collaboration of the project team can lead to true value engineering and innovative solutions instead of the typical vulture engineering that just cuts value.
3. Education of owners, designers, and contractors about different contract types and ways of working will help our industry keep up with the changes in technology of delivering projects. We cannot keep working in our own independent silos. Education and networking with other industry professionals that are outside of your own discipline is vital to future of the design and construction industry.

This was a great presentation full of A LOT of information. If you missed it, make sure to check out the video. [SEE VIDEO >](#)

## New Use for Old Things

*Leslie Case, CSI, Publicity Chair*



Expanded foam PVC sheets are a substrate used by many familiar retail outlets for temporary signage in advertising. Once the promotion is over and the signage is no longer required, the typical alternative is to send the product to a land fill. Manufacturers and contractors have teamed up to take a non-recyclable material commonly used in the graphics industry and have found a home for corner protection in high traffic areas during the construction process.

Currently, there is nearly one million linear feet of corner guard being used throughout and now finding a use in the construction arena. This product is 100 percent recyclable, manufactured domestically and replaces traditional cardboard. The recycled corner guards are reusable because of their inherent rigidity and allow for high impact.

As we look towards more sustainable options across industries, Portland CSI is looking for more success stories. Let us know about what you're doing to help change the environment for the better!

## Let the Golfing Begin

*Erica Bitterman-Ryon, CSI, Golf Chair*



This year's Annual CSI Golf Tournament is August 25th at Lewis River Golf Club. It will be a 12:30 PM shot gun start. Prizes will be awarded for first, second, and third place as well as closest to the pin (KP), longest drive (LD), straight drive, longest putt, and of course a prize for the team that tries the hardest. There will be raffle tickets sold as well for some great prizes donated by our sponsors.

The CSI Annual Golf Tournament is a fund raising event for our scholarships. Scholarships are given out for those that want to further their education in the AEC industry by taking the CDT exam or next level exams. Your sponsorship and participation in this event allow CSI to help

### June 30

Learning & Libations  
Series: Building to the Model  
5:30-7:30 PM  
Walsh Construction

### July 12

CSI Annual Architectural Scavenger Hunt

### August 25

[CSI Annual Golf Tournament](#)  
10A-8P  
Lewis River Golf Course

CSI Sponsors

[Support CSI, Learn How Here >](#)



members in our industry and those emerging professionals that someday may be working with us. Please help make this year a success and participate in the golf tournament. You don't have to be a pro to play, just have to know how to have fun. [REGISTER HERE >](#)

There's still time to sponsor.

Join our early bird sponsors below and help us thank them for their support of CSI and this fun event.

Ameriprise Financial Services - Tee Box, Briana Hinchliffe  
Cambria/FloFoam - Team, Linda Joens & Sarah Mendoza  
Fortifer/Cosella Dorken - Tee Box, Frank Mendez & Sandin  
Ideate, Inc. - Tee Box, Tony DiVincenzo  
John Lape Architects - Team, John Lape  
Johnson Air Products - Last Ball Standing Game & Team, Phil Damiano  
Meier Engineering - Tee Sponsor, Zack Erz  
Miller Paint - Team, Scott Riley  
NW Wall & Ceiling Bureau - Tee Box Sponsors, John Killin  
Oldcastle Building Envelope - Tee Box & Team, Jeff Rubino  
Precision Images - Silver Sponsor, Erica Bitterman-Ryon  
Professional Roof Consultants - Tee Box Sponsor & 3 Teams, Steven McBride  
WoodFold - Tee Box Sponsor, Justin Norman

Call, Erica Bitterman-Ryon at Precision Images 503-274-2030 or email [ebitterman@precisionimages.com](mailto:ebitterman@precisionimages.com) for more info.

## Save the Date

*Alicia Clark, CSI-EP, Program Committee Chair*



April 20, 2016

The Easy Button Myth: BIM and the Human Element  
Presenters: Jenn Thomas & Sara Troy

April 12, 2016

TOPIC CHANGE: Learning about Lents  
A Panel on Growth and Development within the Lents Neighborhood

May 11, 2016

2016 BEC Symposium & Industry Forum 2016: The Theory of Practice  
Portland Art Museum, Kridel Ballroom

May 25, 2016

LIDAR: An Introduction to what it is and how to use it  
Presenter: Paul Tice

June 14, 2016

Fourth Annual Chili Cook-Off and Awards Night  
Chili anyone? Please save the evening of June 14th for attending our CSI Chili Cook-Off and Awards. This year's event will be held at the Billy Frank Jr. Conference Center located in the Ecotrust building at 721 NW 9th Avenue in Portland. This will be a fun evening of networking, chapter awards, some chili smack talk, and a little cold beer and wine. Please look at attending, or even better registering a team. Individual admission is \$10 per person which includes a drink ticket, or team registration is \$150 which this year will include some guest passes. Please visit our website for the event details and registration. Will the Red Hot Chili Peppers with their "Emerging Professional Chili" be able to defend their title? Come see and find out!

June 30, 2016

Building to the Model: A Case Study in Change Management for a Billion Dollar Hospital

Presenters: Benjamin Alfonso

July 12, 2016

Annual Architectural Scavenger Hunt (FREE EVENT!)

Put your thinking cap, grab the map and the clues, and come test your architectural knowledge!

Sponsorship Opportunities Available! Contact [Ali Clark](#) for more details!

## EDUCATION

### pdxCSI Learning & Libations Nights

#### The Easy Button Myth: BIM and the Human Element

*Jake Lamanna, CSI-EP, Education Committee Chair*



April 20th at Walsh Construction Company

Cost: \$10 (includes beer and pizza)

Presenters: Jenn Thomas and Sara Troy

In the AEC industry, it is important not to popularize the idea that BIM is an "easy button". This is especially true when helping subcontractors make the transition to BIM for the first time. Rather, we promote the usefulness of the tool by showing how it aids in communication and coordination through visualization. In this presentation, we will primarily discuss workflows with Revit and Navisworks that streamline the coordination process as well as helpful communication strategies we have successfully used with subcontractors on some recent Modulus projects. [REGISTER HERE >](#)

### Key Clauses of the General Conditions: More Means & Methods

*Sheldon Volfe, RA, FCSI, CCS, CCCA, CSC*



In the last post, we looked at the means and methods clause in Article 3 of the A201. At the end, I concluded that the architect's responsibilities in construction documents are to show what the building should look like, identify the materials, and establish the standards for those materials. I also stated that virtually everything else - including supervising, scheduling, coordination, and deciding how materials are to be installed - is the contractor's responsibility. [READ MORE >](#)

## MEMBERSHIP

### New & Renewed Members - January 2016

*Lee Kilbourn, FCSI, FAIA, Membership Chair*

- Tom Anderson, CSI; Assa Abloy DSS ; member since 2003
- Mr. John Brockamp, CSI, Member Emeritus, member since 1982
- Michael Thrailkill, CSI, CDT, AIA, LEED AP, NCARB; Specifications Consultant; member since 2004
- Stephanie Tauber, CSI-EP; ; member since 2016 - *NEW*
- Michael Prothe, CSI, AIA, NCARB; EMG Corp.; member since 2004
- Jerry Pozo, BS, CSI, CDT; BMI Products of Northern CA; member since 1995
- Karl Michels, CSI; Knauf insulation; member since 2014

- Joseph Mecalis, BA, CSI, CDT; Myhre Group ("Scott"); member since 2007
- Ken McKinney, CSI; International Masonry Institute; member since 2016 - *NEW*
- Scott Martin, CSI, CDT, LEED GA; Tremco Inc. Vulkem Paraseal ; member since 1995
- James Levins, CSI-EP; OrePac (Tyvek); member since 2016 - *NEW*
- Patricia Hernandez, CSI; Vetrotech Saint-Gobain; member since 2016 - *NEW*
- Caroline Hather, CSI; Ankrom Moisan Architects; member since 2016 - *NEW*
- Joshua Guerra, CSI; Solterra; member since 2016 -*NEW*
- Devin Graham, CSI-EP; OHPD; member since 2016 - *NEW*
- Devin Follingstad, CSI, CCCA; Carleton Hart; member since 2007
- Colleen Cameron, CSI; Owens Corning; member since 2007
- Erica Bitterman-Ryon, CSI; Precision Images ; member since 2000
- Kean Bacus, CSI, AHC; Stanley Security Solutions ; member since 2013

Member Emeritus with January anniversary:

- Mr. John Brockamp, CSI, Member Emeritus, member since 1982

## CSI NATIONAL NEWS

### CSI Messages: Who We Are and What We Do

*Lee Kilbourn, FCSI, FAIA, Membership Chair*

On CSI's website, I found some one-liners seemingly intended to illustrate our position as a leader in the construction industry. One of these "canned" messages states, "CSI provides an important public service by developing products and services that make construction projects safer and cheaper."

Some readers may recall my involvement with specification language many years ago. The current CSI Construction Specifications Practice Guide continues the principles of "clear, concise, correct and complete." Sorry, I never thought these principles resulted in "cheap." Maybe I got hard-hearted over the years so my reaction has come to define "cheap" as "inexpensive because of inferior quality" (Google definition 3). I wonder how many CSI members think first of definition #1 "low in price; worth more than is cost" or #2 "charging low prices."

In an attempt to be complete, I'll finish with the other Google definitions: #4 "miserly; stingy" #5 "of little worth because achieved in a discreditable way requiring little effort" and #6 "deserving of contempt."

Bottom Line: I'd rather say ". . . safer and of the quality intended."

### CSI West by Northwest Bi-Region Conference

*Marni Vincent, AIA, CID, CKD, CSI, CDT, Event Chair*



The CSI West by NorthWest Bi-Region conference is being held May 18-22, 2016 at the Hyatt Resort at Incline, Lake Tahoe. There will be three or more tracks of education and leadership skills loads of opportunities to network and share your latest and greatest products as well as learn from your peers.

There will be an all day tour of the University of Nevada at Reno with a special segment of the earthquake testing facility sponsored by Miyamoto International Engineering with Bob Glasgow, Principal of Miyamoto International Engineering, as our guest speaker. Check out all our wonderful events [HERE >](#)

We look forward to your participation and attendance. There are still sponsorship opportunities available as well as registration forms.

## INDUSTRY NEWS

### CANstruction: Call for Entry



Great designers are inspired; they understand the scope of the demands; they use quality materials; they budget well. We use these tools every day, the same tools needed for building a great CANstructure to visually exemplify the tremendous need. Canstruction is intriguing, anyone can stack cans-they are like big Legos; it's fun for the whole family!

You are invited to take a role in raising funds and food for Oregon Food Bank. CANstructure's have the unique ability to reach the community-at-large visually inspiring public awareness.

Join the some 95 firms who have teamed-up to build 153 structures over the past 19 years in the on-going effort to stamp out hunger in Oregon!

See our Call For Entry or contact us at [canstruction.portland@gmail.com](mailto:canstruction.portland@gmail.com)

### Innovative Technologies for Sustainable Building

April 26, 2016 from 8 AM to 5:30 PM  
Embassy Suites, 319 SW Pine Street, Portland  
EARLY BIRD SPECIAL BEFORE APRIL 8th

- Continental Breakfast and Hot Lunch included
- Half-Day Options available AM or PM (4 Credits + lunch)

#### AM

- Moisture Management in Tiled Showers
- Green Concrete
- Acetylated Wood: Durable, Stable, Sustainable
- Introduction to Water Source Heat Pump Systems

#### PM

- Use of Snow Retention Devices: Science or Science Fiction ?
- Architectural Room Acoustics
- Ceramic Tile and Stone Installation Basics
- Understanding Concrete Curing and Adhesive Compatibility

[LEARN MORE OR REGISTER HERE >](#)

CSI's mission is to advance building information management and education of project teams to improve facility performance. We are the only organization that brings together all the players in the built industry.

Portland Chapter CSI, PO Box 6683, Portland, OR 97228

[SafeUnsubscribe™ ilamanna@walshconstructionco.com](mailto:ilamanna@walshconstructionco.com)

[Forward this email](#) | [Update Profile](#) | [About our service provider](#)

Sent by [portlandcsi@gmail.com](mailto:portlandcsi@gmail.com)



[About](#) | [Join](#) | [Attend](#) | [Contact](#)



VOLUME 56 | ISSUE 3 | **MAY 2016**

[\*\*Got News?\*\*](#)

IN THE SPOTLIGHT

## Industry Forum/BEC Symposium is Just a Week Away - May 11th

*Corey Morris, AIA, CSI, Board Secretary*



### In this Issue

March Chapter Meeting  
Take-Aways: Project  
Delivery Methods

President's Message:  
Meaningful Change  
Starts at the Top

Save the Dates

Learning & Libations  
Series: BIM

Learning & Libations  
Series: BIM

Learning & Libations  
Series: BIM

New & Renewed  
Members

CSI West by Northwest  
Bi-Region Conference

Key Clauses of the  
General Conditions

Key Clauses of the  
General Conditions



This month is your opportunity to enjoy two great events in one action-packed day.

BEC Symposium - 7A to 3P  
Keynote: Joe Lstiburek, Building Science Corp.  
Tickets: \$75 including lunch

Sessions include:  
Mitch Dec + Chris Lowen, Glumac, Energy Retrofit Energy Modeling  
Rachel Bailey, Central City Concern, Energy Modeling vs Actual  
Performance  
Lorne Ricketts, RDH Building Sciences, Enhancing Energy Performance

Through Enclosure Retrofits  
Lessons Learned of Energy Retrofits, A Panel Discussion

Industry Forum: Theory & Practice - 4P to 8P  
Keynote: Rob Rogers, Rogers Partners  
Tickets: \$25 including appetizer buffet

6x10 Presenters:

Cody Tucker, B.Arch Candidate, UO Portland, Sustainable Consumption and Trash  
Travis Bell, AIA, Professor - Portland State University  
Josh Partee, Architectural Photographer  
Matthew Rusnac, M.Arch Candidate, Portland State University, Dwelling and Wanderlust: Architecture as a Vessel for Human Stories  
Shawn Small, Owner/Engineer, Ruckus Composites  
Jean-Pierre Veillet, Chief, Siteworks Design Build

[BUY TICKETS HERE >](#) Or contact your favorite sponsor and ask to be invited as their guest!

[BE AN EXHIBITOR HERE >](#)

There are just TWO sponsorship opportunities left - don't miss out!

SPONSORS - You should have already received an email with information about inviting and registering your guests, display details and other day-of-event information. Still have questions? Contact 503-488-6883 or [qatanna.palioca@ideateinc.com](mailto:qatanna.palioca@ideateinc.com).

PRESIDENT'S MESSAGE

## President's Message: Meaningful Change Starts at the Top

*Cherise Lakeside, CSI, CDT, Chapter President*



Complicated, outdated, and conflicting policies have been hampering CSI's potential success. These policies are contributing to losses in membership, leadership, and services. We can't let that happen anymore. We need strong and strategic representation of the membership's interest and we need it now. [READ MORE](#)

>

CSI PORTLAND NEWS

## Save the Date

*Alicia Clark, CSI-EP, Program Committee Chair*



May 25, 2016  
Learning & Libations Series: 3D Technology for the Built Environment  
Presenter: Paul Tice

June 14, 2016

Fourth Annual Chili Cook-Off and Awards Night  
Chili anyone? Please save the evening of June 14th for attending our CSI Chili Cook-Off and Awards. This year's event will be held at the Billy Frank Jr. Conference Center located in the Ecotrust building at 721 NW 9th Avenue in Portland. This will be a fun evening of networking, chapter awards, some chili smack talk, and a little cold beer and wine. Please look at attending, or even better registering a team. Individual admission is

Upcoming Events

**May 11**

[BEC Industry Symposium & CSI Industry Forum: Theory of Practice](#)  
Portland Art Museum

**May 18-22**

[CSI Bi-Region Conference & Leadership Training](#)  
Hyatt Regency Lake Tahoe, NV

**May 25**

[Learning & Libations Series: 3D Technology for the Built Environment](#)  
5:30-7:30 PM  
Walsh Construction

**June 14**

[CSI Annual Chili Cook-off and Awards](#)  
4:30-8:30 PM  
EcoTrust building

**June 20**

Learning & Libations  
Series: Willamette Falls Tour

**June 30**

Learning & Libations  
Series: Building to the Model  
5:30-7:30 PM  
Walsh Construction

**July 12**

CSI Annual Architectural Scavenger Hunt

**August 25**

[CSI Annual Golf Tournament](#)  
10A-8P  
Lewis River Golf Course

CSI Sponsors

[Support CSI, Learn How Here >](#)

\$10 per person which includes a drink ticket, or team registration is \$150 which this year will include some guest passes. Please visit our website for the event details and registration. Will the Red Hot Chili Peppers with their "Emerging Professional Chili" be able to defend their title? Come see and find out!

June 10, 2016

Learning & Libations Series: Willamette Falls Tour  
Currently scheduled for 2:00 PM

Limited space available. Sturdy shoes, long pants needed. Hard hats provided for this tour.

June 30, 2016

Learning & Libations Series: Building to the Model: A Case Study in Change Management for a Billion Dollar Hospital  
Presenters: Benjamin Alfonso

July 12, 2016

Annual Architectural Scavenger Hunt (FREE EVENT!)  
Put your thinking cap, grab the map and the clues, and come test your architectural knowledge!

Sponsorship Opportunities Available! Contact [Ali Clark](#) for more details!

## CERTIFICATION

### It's Testing Time

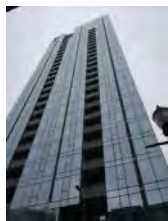
*Cherise Schacter, CSI, Board President, Certification Committee Member*

The Certification Committee has completed the Spring CDT Class Series, and candidate testing is currently underway. Thank you to Rick Heiserman, committee chair, for all his hard work to make our class series happen at Ankrom-Moisan Architects' offices. Best of luck to all of our CDT candidates this month. Please feel free to contact Portland CSI anytime for more information on the CDT and/or any of the advanced certifications

## EDUCATION

### Learning & Libations Nights The Cosmopolitan Tour Take-Aways

*Leslie Case, CSI, Publicity Committee Chair*



One of the benefits CSI offers their members (and non-members) is the Learning and Libations sessions held several times throughout the year. On Tuesday evening, I had the opportunity to tour the Block 15 Cosmopolitan Project. Boora Architects and Andersen Construction were our hosts who provided an excellent tour giving detailed exposure to the only high-end condo project currently underway in the Pearl District.

The Cosmopolitan is a Point Tower sitting between two parks overlooking Portland's scenic bridges, rivers and beautiful Mt. Hood. It's the tallest residential building in the Pearl District. After the presentation and tour, several of us met at the Street Car Bistro for the libations and networking portion of the evening.

## MEMBERSHIP



## Portland Chapter Dues Increase Approved

*Lee Kilbourn, FCSI, FAIA, Membership Chair*

Recently the Board of Directors approved a \$10 annual dues increase for Professional Members of Portland Chapter CSI. This will apply to renewals in July 2016 and later. Current renewing members cannot avoid this increase, since their renewal month was established when they first joined CSI.

### NEW PROFESSIONAL MEMBERS CAN AVOID THIS INCREASE!

Have you been "thinking about" joining CSI? Now is the time! Join with the paper form delivered to the Alexandria VA office on or before Tuesday May 31, 2016, or join on line before the close of business in Alexandria VA June 30, 2016.

Questions will be answered by Lee Kilbourn ([lfk22@comcast.net](mailto:lfk22@comcast.net)) or members of the Board of Directors.

## New & Renewed Members - February 2016

*Lee Kilbourn, FCSI, FAIA, Membership Chair*

- Brian Carleton, CSI; Carleton Hart Architecture, PC; member since 1995
- Jason Chupp, CSI; Swinerton Builders; member since 2013
- William Clark Jr., CSI, CDT; Wm. Clark and Associates, LLC; member since 1991
- Danny Elkins, CSI; D & R Waterproofing, Inc.; member since 2007
- Ray Elkins, CSI; D & R Waterproofing, Inc.; member since 2007
- Devin Follingstad, CSI, CCCA; Carleton Hart Architecture; member since 2007
- Stephen Haner, CSI; Mid -Valley Glass and Millwork; member since 2007
- Scott Huff, CSI-EP; Versico; member since 2015
- Debbie Knippert, CSI-EP; Interface Engineering; member since 2016 - **NEW**
- Fred Larson, CSI; All Weather Architectural Aluminum; member since 2003
- Edward Macsisak, CSI; Spacesaver Specialists, Inc.; member since 2005
- Cherie McNabb, CSI, CDT; Forbo Flooring Systems; member since 1993
- Halliday Meisburger, CSI, CDT, AIA; ZGF Architects; member since 2013
- Mark Miller, CSI-EP; Skoler Building Resources; member since 2012
- Kenneth Mouchka, CSI, CCS, AIA; Mouchka Architecture LLC; member since 1980
- Jim Mowery, CSI; L + W Supply; member since 2016
- M. Myers, CSI, CCS, AIA; MK Myers; member since 1986
- Bryan Ninneman, CSI, CDT; Creative Design Concepts; member since 2015
- Adam Owens, CSI-EP; Akzo Nobel Powder Coatings; member since 2015
- Mark Reeves, CSI; Hanset Corp.; member since 1999
- Jeff Rubino, CSI; Oldcastle Building Envelope; member since 2003
- Tim Shinnars, CSI; Da-Lite Screen Company; member since 2007
- Kourtney Strong, CSI, AIA, NCARB; BLRB Architects, p.s.; member since 2014

- Isaac Tevet, CSI, AIA; Ankrom Moisan Architects; member since 1989
- Jeremy Tunney, CSI; Class A Roofing Consultants; member since 2012
- Ramona White, CSI; PAE Engineers; member since 2016 - **NEW**

Member Emeritus with January anniversary:

- Robert Easton, CSI, Member Emeritus, CDT; member since 1992
- Kenneth Nelson, CSI, Member Emeritus, CDT; member since 1971
- Les Seeley, CSI, Member Emeritus; member since 1977

## SOCIAL MEDIA

### Get Social

CSI members in Portland, across the country and beyond are sharing information on LinkedIn discussion groups, Twitter, and blogs that are full of great content. We encourage you to connect with these professionals and expand your network. We learn something new from them each and every day.

Featured blogs this month:

[Where are the Specifiers?](#), Cherise Schacter, The Voices in my Head  
[Bylaws Again](#), Sheldon Wolfe

## CSI NATIONAL NEWS

### CSI West by Northwest Bi-Region Conference

*Marni Vincent, AIA, CID, CKD, CSI, CDT, Event Chair*



The CSI West by NorthWest Bi-Region conference is being held May 18-22, 2016 at the Hyatt Resort at Incline, Lake Tahoe. There will be three or more tracks of education and leadership skills loads of opportunities to network and share your latest and greatest products as well as learn from your peers.

There will be an all day tour of the University of Nevada at Reno with a special segment of the earthquake testing facility sponsored by Miyamoto International Engineering with Bob Glasgow, Principal of Miyamoto International Engineering, as our guest speaker. Check out all our wonderful events [HERE >](#)

We look forward to your participation and attendance. There are still sponsorship opportunities available as well as registration forms.

## INDUSTRY NEWS

### Key Market Indicator Report

*Cliff Brewis, Dodge Data & Analytics*

Attached is the Key Market Indicator Report for March 2016. It provides insights on the first quarter of 2016 and compares recent activity to past years. In appreciation for your cooperation we hope the attached information will help you make better business decisions.

The top three sections of this report provide insights on the direction of costs in the industry. As you can see, material costs are largely under control. If you look at the column "Change from 3 months Ago" there

are a surprising number of costs that are in decline. Those of you that counsel owners on costs should be aware construction costs in the near term should be stable.

Looking further down in the document you should note that there are indications construction has slowed down. The Dodge Index, the Momentum Index and Construction Employment show signs of a slight decline. Anecdotally we did hear of "softening" in construction the end of 2015 coupled with pessimism in the overall economy. You may recall there were concerns about China, oil prices were very unstable, and the Fed was suggesting more aggressive action. We believe this is more a pause in activity than an actual downturn. The more optimistic view is supported by the ABI number over 50 points.

[DOWNLOAD REPORT HERE >](#)

## Please Say Thank You

*Sheldon Wolfe, RA, FCSI*

Among the first things parents drum into their children's heads are the words please and thank you. Parents do such a good job that these words become automatic, and, to a great extent, they become white noise. If they are used automatically, without conscious thought, what good are they? Do they mean anything? Why do we insist children use them, even if they don't mean what they say?

Human interactions are more complex than they appear. Unlike the parts of well-oiled machines we often have trouble working with each other. Instead of smooth, machined gears, we are more like rough, unsynchronized cogs. Polished gears require only a touch of light oil for lubrication, but to function socially humans need thick grease, and a lot of it. This essential lubrication is provided by accepted norms, manners, and etiquette, a good part of which is provided by little words like please and thank you, and by other nearly involuntary responses. (The ticket agent says, "Have a good trip!" and your programmed response is "You too!") [READ MORE >](#)

CSI's mission it to advance building information management and education of project teams to improve facility performance. We are the only organization that brings together all the players in the built industry.

Portland Chapter CSI, PO Box 6683, Portland, OR 97228

[SafeUnsubscribe™ jlamanna@walshconstructionco.com](#)

[Forward this email](#) | [Update Profile](#) | [About our service provider](#)

Sent by [portlandcsi@gmail.com](mailto:portlandcsi@gmail.com)



[About](#) | [Join](#) | [Attend](#) | [Contact](#)



VOLUME 56 | ISSUE 3 | **JUNE 2016**

[\*\*Got News?\*\*](#)

### PRESIDENT'S MESSAGE

## President's Message: Farewell

*Cherise Lakeside, CSI, CDT, Chapter President*



This writing marks my final Presidents message to Portland CSI. Beginning July 1st, Ellen Onstad of Dodge Data (who was actually born into CSI) will be your new Chapter President. Ali Clark of Emerick Construction will be your new President Elect. I will still be around as Immediate Past President for a while. It has been a bit of a struggle to write this column.

What exactly do I want to say? What words of wisdom can I impart as I step down and let the new leadership take over.

It only took a moment of thought - It's about the people! [READ MORE >](#)

### CSI PORTLAND NEWS

## Save the Date

*Alicia Clark, CSI-EP, Program Committee Chair*



**June 10, 2016**  
Learning & Libations Series: Willamette Falls Tour  
Currently scheduled for 2:00 PM  
Limited space available. Sturdy shoes, long pants needed. Hard hats provided for this tour.

**June 14, 2016**

Fourth Annual Chili Cook-Off and Awards Night  
Chili anyone? Please save the evening of June 14th for attending our CSI Chili Cook-Off and Awards. This year's event will be held at the Billy



### In this Issue

President's Message:  
Meaningful Change  
Starts at the Top

Save the Dates

Portland Chapter Dues  
Increase Approved

New & Renewed  
Members

Get Social

Need CE Credit?

### Upcoming Events

**June 10**

[Learning & Libations  
Series: Willamette Falls  
Tour](#)  
3:00 PM

**June 14**

[CSI Annual Chili Cook-off  
and Awards](#)  
4:30-8:30 PM

Frank Jr. Conference Center located in the EcoTrust building at 721 NW 9th Avenue in Portland. This will be a fun evening of networking, chapter awards, some chili smack talk, and a little cold beer and wine. Please look at attending, or even better registering a team. Individual admission is \$10 per person which includes a drink ticket, or team registration is \$150 which this year will include some guest passes. Please visit our website for the event details and registration. Will the Red Hot Chili Peppers with their "Emerging Professional Chili" be able to defend their title? Come see and find out!

**June 30, 2016**

Learning & Libations Series: Building to the Model: A Case Study in Change Management for a Billion Dollar Hospital  
Presenters: Benjamin Alfonso

**July 12, 2016**

Annual Architectural Scavenger Hunt (FREE EVENT!)  
Put your thinking cap, grab the map and the clues, and come test your architectural knowledge! The summer time is also the time for our Annual Architectural Scavenger Hunt, and we are busy hunting down clues to make a fun and challenge trail for you to follow, and this year will be our first over on the eastside of the river. Brush off your sleuthing skills and save the date for July 12th. This is a free event with a hosted Happy Hour to follow, so spread the word around your office to anyone that is interested in coming to see what Portland CSI is all about!

**August 25, 2016**

Annual CSI Golf Tournament  
Our Annual day in the sun at Lewis River Golf Course, to raise money for our Scholarship Program. Sponsorship and golf teams are filling up fast, so make sure to sign-up soon!

**September 13, 2016**

Annual Building Tour  
We are working to nail down the final location, but this is always a much anticipated event. Past tours have included the OHSU Collaborative Life Sciences Building, Oregon Zoo Elephant Exhibit, and the Portland Water Bureau Operations and Maintenance Center.

**October 11, 2016**

Chapter Meeting Topic TBD  
We're looking into topics such as the Post Office Master Plan, Vancouver Gramor Development, OSU Cascade Campus. If you have a topic you are really interested in seeing, please email Ali Clark at [alic@emerick.com](mailto:alic@emerick.com)

**November 8, 2016**

Law in Design and Construction: Who's at Risk?  
Design and Construction can be a contentious industry. Construction Defect, digital documents, project warranties, can all bring up lots of questions about the correct way to do things, and the actual way things get done. Come ask your questions to our panel of experts.

**December 13, 2016**

Multi-Generational Panel: Design/Construction and the Changing of the Guard  
Speed Mentoring Event  
Baby Boomers are retiring, Millennials are entering the workforce in-mass, and the Recession through a wrench in the whole system.

Sponsorship Opportunities Available! Contact [Ali Clark](#) for more details!

EcoTrust building

**June 30**

[Learning & Libations Series: Building to the Model](#)  
5:30-7:30 PM  
Walsh Construction

**July 12**

CSI Annual Architectural Scavenger Hunt

**August 25**

[CSI Annual Golf Tournament](#)  
10A-8P  
Lewis River Golf Course

**November 8**

Chapter Meeting: Law in Design & Construction: Who's At Risk

**December 13**

Multi-Generational Panel: Design/Construction and the Changing of the Guard

CSI Sponsors

[Support CSI, Learn How Here >](#)

## MEMBERSHIP

### Portland Chapter Dues Increase Approved

Lee Kilbourn, FCSI, FAIA, Membership Chair



Recently the Board of Directors approved a \$10 annual dues increase for Professional Members of Portland Chapter CSI. This will apply to renewals in July 2016 and later. Current renewing members cannot avoid this increase, since their renewal month was established when they first joined CSI.

#### NEW PROFESSIONAL MEMBERS CAN AVOID THIS INCREASE!

Have you been "thinking about" joining CSI? Now is the time! Join with the paper form delivered to the Alexandria VA office on or before Tuesday May 31, 2016, or join on line before the close of business in Alexandria VA June 30, 2016.

Questions will be answered by Lee Kilbourn ([lfk22@comcast.net](mailto:lfk22@comcast.net)) or members of the Board of Directors.

### New & Renewed Members - March 2016

Lee Kilbourn, FCSI, FAIA, Membership Chair

- Bryan Ackler, CSI; member since 2012
- George Wolodzko, CSI; GTG Consultants; member since 1994
- David Stephenson, CSI, AIA, LEED AP; SERA Architects; member since 2007
- Allison K Rouse, CSI, CDT; Portland Parks and Recreation; member since 2015
- Brian Ross, CSI, CCS; member since 2013
- Russell Pitkin, RA, CSI, CDT, AIA, LEED AP; SERA Architects; member since 2004
- Kyle Perteet, CSI-EP; AVM Industries; member since 2016 - **NEW**
- Larry Payne, CSI-S, CDT; Student; member since 2010
- Randall Page, CSI, AIA, LEED AP, NCARB; Randall A Page, Architect; member since 2014
- Ron Ogden, CSI; R. J. Ogden Associates, Inc.; member since 1986
- Bob Mohr, CSI; Morin - A Kingspan Group Company; member since 2015
- Gregory Mockford, CSI; Pinnell Busch Inc.; member since 2014
- Jim Mitchell, CSI, USGBC; Koroseal Interior Products Group; member since 1992
- Randy McAdams, CSI; Atlas Supply; member since 2010
- Richard Manning, CSI; Green Building Services; member since 2016- **NEW**
- Jennifer Link Raschko, CSI; USG; member since 2016 - **NEW**
- Ronald Lee, CSI, AIA; BBL Architects; member since 1985
- John Lape, FCSI, CCS, AIA, CSC; John Lape, Architect; member since 1986
- Teresa Kruse, CSI, M. Arch; Oh Planning + Design, Architecture; member since 2016 - **NEW**
- Keith Kittrick, CSI-S; Student; member since 2016 - **NEW**
- Bryce Jacobson, CSI; Metro SW&R; member since 1997
- Clifford Hood, PE, CSI; Hood-McNees, Inc.; member since 1996
- David Haug, CSI, AIA; Insulfoam; member since 2005
- Jim Hanset, CSI; Hanset Stainless; member since 1997
- Chris Ferguson, CSI; Atlas Supply, Inc.; member since 2015
- Jerry Davis, CSI, CDT, AHC, DHI; Allegion; member since 1986

- Dennis Brown, CSI; Capitol City Door, Inc.; member since 1992
- Heidi Bertman, CSI, AIA, LEED AP, NCARB; ZGF Architects; member since 2014
- Bradley Bennett, CSI; Specification Products; member since 2016  
- **NEW**

Member Emeritus with anniversary date in March:

- Robert Klas, CSI, Member Emeritus; member since 1974

## SOCIAL MEDIA

### Get Social



CSI members in Portland, across the country and beyond are sharing information on LinkedIn discussion groups, Twitter, and blogs that are full of great content. We encourage you to connect with these professionals and expand your network. We learn something new from them each and every day.

Featured blogs this month:

[How did we get here? The good old days](#), Sheldon Wolfe

## INDUSTRY NEWS

### Need Continuing Education Credit?



CE Academy, an affiliate of Ron Blank & Associates, host live continuing education events throughout the country each year, assisting design professionals in maintaining their required credits. We're hosting a live event for the Portland area on **July 14th**. This full-day event is scheduled to provide attendees with 9 HSW, 9 GBCI general credit hours, 2 BD+C credit hours, and 1 credit hour of Accessibility (ADA). We'll report attendance to AIA and the USGBC for credit, as well as issue certificates of completion for the attendees' personal records. We'll also provide breakfast and lunch! For more information, email Chris Massey at [chris@ceacademyinc.com](mailto:chris@ceacademyinc.com).

CSI's mission is to advance building information management and education of project teams to improve facility performance. We are the only organization that brings together all the players in the built industry.

Portland Chapter CSI, PO Box 6683, Portland, OR 97228

[SafeUnsubscribe™ jlamanna@walshconstructionco.com](mailto:jlamanna@walshconstructionco.com)

[Forward this email](#) | [Update Profile](#) | [About our service provider](#)

Sent by [portlandcsi@gmail.com](mailto:portlandcsi@gmail.com)



[About](#) | [Join](#) | [Attend](#) | [Contact](#)



VOLUME 56 | ISSUE 7 | **JULY 2016**

[Got News?](#)

IN THE SPOTLIGHT

## CSI/Praxis Portland: 2-Day Concrete/Flooring Symposium

*Cherise Lakeside, CSI, CDT, President Elect*



Join us for an unprecedented event! Praxis Events Live represents the largest slab construction, polishing and roughness average demonstrations across country. Representatives from the specifications community along with industry professionals lead presentations on performance-based specifications. After decades of challenges within the concrete construction industry, this educational events series brings transparency, clarity and accountability to the concrete construction process.

[REGISTER HERE >](#)

[SPONSOR HERE >](#)

[DOWNLOAD EVENT SCHEDULE HERE >](#)

PRESIDENT'S MESSAGE

## President's Message

*Ellen Onstad CSI, CDT, Chapter President*

I've known many of the members for many years - I love looking thru the membership lists to see who is currently listed. What company they are with and how long they have been a member. Please make sure this information is correct. To do that contact CSI National or Lee Kilbourn



### In this Issue

July Chapter Meeting

President's Message

Annual Golf Tournament

June Chapter Meeting Recap

Save the Dates

Learning & Libations Year in Review

Certification News

New & Renewed Members

Get Social

Need CE Credit?

### Upcoming Events

**July 12**

[CSI Annual Architectural Scavenger Hunt](#)

5:30-7:30 PM





and he can walk you through corrections. The membership committee also uses this information to remind members to renew, and invite members to join committees or attend special events.

As we begin this new year of Portland Chapter CSI, its important to also look back. We have accomplished much these last few years. The recession was difficult on the construction industry, organizations like ours specifically. Membership as a whole has decreased but Portland Chapter has held its own at approximately 270 members. We have a healthy mix of architects, specifiers, contractors, engineers and product representatives. Thank you all for maintaining your membership.

It's also important for us to look forward. Our committees are always looking for new members. If you didn't receive information at new member orientation or its been a few years, please look at our Portland chapter website and review the options available for joining committees.

More information will be forthcoming after the annual board retreat. Looking forward to fresh ideas and new perspectives. Thank you everyone who has agreed to be on the board or act as a committee chair.

## CSI PORTLAND NEWS

### July Chapter Meeting: Architectural Scavenger Hunt

*Alicia Clark, CSI-EP, Program Committee Chair*



#### **July 12, 2016 Annual Architectural Scavenger Hunt (FREE EVENT!)**

Put on your thinking cap, grab the map and the clues, and come test your architectural knowledge! It's summery time! Time for our annual Architectural Scavenger Hunt. We are busy hunting down clues to make a fun and challenging trail for you to follow. This year will be our first scavenger hunt on the Eastside of the river. Brush up on your sleuthing skills and join us. This is a free event with a hosted Happy Hour to follow, so spread the word around your office to anyone that is interested in coming to see what Portland CSI is all about! [REGISTER HERE >](#)

### Let the Golfing Begin

*Erica Bitterman-Ryon, Golf Committee Chair*



This year's Annual CSI Golf Tournament Is August 25th at Lewis River Golf Club. It will be a 12:30 shot gun start. Prizes will be awarded for 1st, 2nd, and 3rd, KP, LD, Longest Putt and Straight Drive and of course team that tries the

hardest. There will be Raffle tickets sold as well for some great prizes donated by our sponsors.

The CSI Annual Golf Tournament is a fund raising event for our Scholarships. Scholarships are given out for those that want to further their education in the AEC industry by taking the CDT Exam or next level exams. Your sponsorship and participation in this event allows CSI to help members in the AEC Industry and

Loyal Legion

#### **July 20**

[Learning & Libations](#)  
[Series: 3D Technology for the Built Environment](#)  
5:30-7:30P  
BestHQ

#### **August 25**

[CSI Annual Golf Tournament](#)  
10A-8P  
Lewis River Golf Course

#### **August 26-27**

[CSI/Praxis Portland Two Day Concrete/Flooring Symposium](#)  
8A-5P  
Walsh Construction

#### **November 8**

Chapter Meeting: Law in Design & Construction: Who's At Risk

#### **December 13**

Multi-Generational Panel: Design/Construction and the Changing of the Guard

CSI Sponsors

[Support CSI, Learn How Here >](#)

those emerging professionals that someday may be working with us in this wild and crazy industry. Please help make this year a success and participate in the golf tournament. You don't have to be a pro to play, just have to know how to have fun. If you are just not a golfer in any way shape or form, you can be a sponsor and help that way. Come out and network, man a tee box, play games and give out prizes. You can also donate Raffle Prizes for after dinner. Got some Swag you wanna get out there to help promote your firm? This is the perfect chance to do so.

It's a lot of fun! You're out of the office in the sun networking, laughing, and enjoying the day. HOW AWESOME IS THAT!

[REGISTER OR SPONSOR HERE >](#)

## Annual Chili Cook-Off & Awards Ceremony Recap

*Alicia Clark, CSI-EP, Program Committee Chair*



The Chili Cook-Off was a huge success! Congratulations to Team Chili Chili Bang Bang (sponsored by [Pacific Mat](#)) for winning both Best Chili and People's Choice! Also, congratulations to Team Holiday Mash Up (sponsored by [WindowTech](#)) for winning Best Theme! They had everyone laughing with their creative holiday character mash-ups.

We had six great chilis, and we appreciate everyone that came out to taste them all. I also want to thank our event sponsors Tao Group and Boral for helping to support this event and keep the cost down for people to attend. This is a fun event with a great opportunity for networking, so start planning your chili recipes for next year.

To see the list of awards presented, [CLICK HERE >](#)

## Save the Date

*Alicia Clark, CSI-EP, Program Committee Chair*



**July 20, 2016**

3D Tech for the Built Environment

Paul Tice is CEO of ToPa 3D, with several years of experience in the 3D documentation industry. He will be presenting project case studies on the use of 3D laser scanning, drone technology and virtual reality applications as they relate to construction projects. This presentation is available for AIA CEUs. Also, there will be a raffle amongst the attendees for a set of Samsung Gear VR virtual reality goggles.

**August 25, 2016**

Annual CSI Golf Tournament

Our Annual day in the sun at Lewis River Golf Course, to raise money for our Scholarship Program. Sponsorship and golf teams are filling up fast, so make sure to sign-up soon!

**August 26-27, 2016**

CSI/Praxis Portland - Two Day Concrete/Flooring Symposium

This is special two-day event with a focus on CSI Division 03. The event will include panel discussions, hands-on contractor training/certification

and up to 8 AIA credit hours of classroom learning available for the first event of its kind in Portland, OR.

November 8, 2016

Law in Design and Construction: Who's at Risk?

Design and Construction can be a contentious industry. Construction Defect, digital documents, project warranties, can all bring up lots of questions about the correct way to do things, and the actual way things get done. Come ask your questions to our panel of experts.

December 13, 2016

Multi-Generational Panel: Design/Construction and the Changing of the Guard

Speed Mentoring Event

Baby Boomers are retiring, Millennials are entering the workforce in-mass, and the Recession threw a wrench in the whole system.

Sponsorship Opportunities Available! Contact [Ali Clark](#) for more details!

## EDUCATION

### Learning & Libations Year in Review

*Jake LaManna, CSI-EP, CDT, Education Chair*



In 2016, several new features to our educational offerings have been experimentally introduced. First, we rebranded ourselves as the pdxCSI Learning & Libations Series. We are still a place to get beer, pizza, and learning. Now we have a catchy title to announce that fact.

Next, we experimented with new program offerings. These included a "Season of Technology" where we've explored the available technologies out there for enhancing project delivery and communication. We have tested out offering semi-monthly L&L Tours, one given by Andersen Construction of the Cosmopolitan condo tower being built in the Pearl District and another given by the Willamette Falls Legacy Project, to explore the future Riverwalk development site at the Willamette Falls in Oregon City.

Still further, we are exploring offering an annual symposium, covering in depth the coordination and core competencies required to execute the design and construction of complex assemblies. Our first experiment in this type of educational offering is being spearheaded by the Kraken herself, Cherise Schacter, and we look forward to sharing that event with you on August 26th and 27th at Walsh Construction.

New ideas are still being worked on and theorized. The year isn't over yet, and there are many innovative tours and lectures coming up in the Fall.

## CERTIFICATION

### Congratulations to Newly Certified Smarty Pants

*Cherise Lakeside, CSI, CDT, Certification Chair*



Portland CSI would like to congratulate the following members on receiving either their CDT (Construction Document Technologist) or their CCS (Certified Construction Specifier) during our last round of testing in April 2016. Next time you see them, please give

these members a high five and "Way to Go" for a job well done!

#### Portland Chapter Members

Graham, Devin, CSI-EP, CDT; OH Planning + Design, Architecture  
Harrison, Russell, CSI, CDT; Window Tech, Inc.  
Hather, Caroline, CSI, CDT; Ankrom Moisan Architects  
Hristov, TZ, CSI, CDT; Airefco  
Kruse, Teresa, CSI, CDT; OH Planning + Design, Architecture  
Libby, Sharon, CSI, CDT, LEED AP, NCARB; Walsh Construction Co.  
Lungershausen, Alexander, CSI, CCS, AIA, LEED AP; Hennebery Eddy  
Rouse, Allison K, CSI, CCS; Portland Parks and Recreation  
Tauber, Stephanie, CSI-EP, CDT; Ankrom Moisan Architects

#### CSI Members in Portland Oregon area, without chapter affiliation:

Michael Green, CSI, CDT, LEED AP; Forensic Building Consultants  
Jones, Monica, CSI, CCS; LRS Architects  
Tim Lunsford, CSI, CDT; Forensic Building Consultants

### MEMBERSHIP

## New & Renewed Members - April 2016

*Lee Kilbourn, FCSI, FAIA, Membership Chair*

- Mark Barney, CSI, CDT, AHC; Northwest Hardware Consultants ; member since 2002
- David York, CSI, AIA; David York architect, LLC; member since 2013
- Susan Wurdeman, CSI, NCARB; Dull Olson Weekes - IBI Group Architects; member since 1997
- Anna Todd, CSI, LEED AP; Todd Construction, Inc.; member since 2012
- Steve Popkes, CSI, CDT; AEP Span ; member since 1999
- Derek Payne, CSI; Benchmark by Kingspan; member since 2014
- Bo Oswald, CSI; Essex General Construction; member since 2015
- Ellen Onstad, CSI, CDT; Dodge Data & Analytics; member since 1995
- Gordon Nelson, CSI; Pacific Facade Systems, LLC; member since 2014
- Dale Kuykendall, CSI, CDT; Glen/Mar Construction, Inc.; member since 1986
- Douglas Isaacs, CSI; Crawford Roll-Lite Door Sales of Oregon; member since 2014
- Alexei Holstein, CSI, CDT, PMP; Siemens; member since 2013
- Trasi Hogenhout, CSI; Contractor Plan Center, Inc. ; member since 1988
- John Herrmann, CSI, CDT; Bain Associates, Inc. ; member since 1991
- Jeff Herrmann, CSI, CDT; Georgia-Pacific ; member since 2002
- Etta Goerl, CSI, CCS; Port of Portland; member since 2010
- Craig Cody, CSI; Architextures; member since 2011
- Timothy Clem, CSI, CDT, AIA, LEED AP, NCARB; PKA Architects; member since 2002
- Jon Bouffleur, CSI; SprayLock; member since 2016 - **NEW**

### SOCIAL MEDIA

## Get Social



CSI members in Portland, across the country and beyond are sharing information on LinkedIn discussion groups, Twitter, and blogs that are full of great content. We encourage you to connect with these professionals and expand your network. We learn something new from them each and every day.

Featured blogs this month:

[How do we get here? Effects of the economy on membership, MythBusters Edition](#), Sheldon Wolfe

## INDUSTRY NEWS

### Need Continuing Education Credit?



CE Academy, an affiliate of Ron Blank & Associates, host live continuing education events throughout the country each year, assisting design professionals in maintaining their required credits. We're hosting a live event for the Portland area on July 14th. This full-day event is scheduled to provide attendees with 9 HSW, 9 GBCI general credit hours, 2 BD+C credit hours, and 1 credit hour of Accessibility (ADA). We'll report attendance to AIA and the USGBC for credit, as well as issue certificates of completion for the attendees' personal records. We'll also provide breakfast and lunch! For more information, email Chris Massey at [chris@ceacademyinc.com](mailto:chris@ceacademyinc.com).

CSI's mission it to advance building information management and education of project teams to improve facility performance. We are the only organization that brings together all the players in the built industry.

Portland Chapter CSI, PO Box 6683, Portland, OR 97228

[SafeUnsubscribe™](#) [ilamanna@walshconstruction.com](mailto:ilamanna@walshconstruction.com)

[Forward this email](#) | [Update Profile](#) | [About our service provider](#)

Sent by [portlandcsi@gmail.com](mailto:portlandcsi@gmail.com)



[About](#) | [Join](#) | [Attend](#) | [Contact](#)



VOLUME 56 | ISSUE 8 | **AUGUST 2016**

[\*\*Got News?\*\*](#)

IN THE SPOTLIGHT

## CSI/Praxis Portland: 2-Day Concrete/Flooring Symposium

*Cherise Lakeside, CSI, CDT, Certification Chair*



Join us for an unprecedented event! Praxis Events Live represents the largest slab construction, polishing and roughness average demonstrations across country. Representatives from the specifications community along with industry professionals lead presentations on performance-based specifications. After decades of challenges within the concrete construction industry, this educational events series brings transparency, clarity and accountability to the concrete construction process.

[REGISTER HERE >](#)

[SPONSOR HERE >](#)

[DOWNLOAD EVENT SCHEDULE HERE >](#)

PRESIDENT'S MESSAGE

### President's Message

*Ellen Onstad CSI, CDT, Chapter President*

It's the beginning of a new fiscal year here at CSI -- a time for summer vacations, mid-year reviews, and back to school shopping for the kids. Here at CSI, we were also in planning mode and strategizing our goals and plan to best serve our members.



### In this Issue

July Chapter Meeting

President's Message

Annual Golf Tournament

Save the Dates

Learning & Libations  
Year in Review

New & Renewed  
Members

Get Social

### Upcoming Events

#### **August 25**

[CSI Annual Golf  
Tournament](#)

10A-8P

Lewis River Golf Course

#### **August 26-27**

[CSI/Praxis Portland Two  
Day Concrete/Flooring  
Symposium](#)



Our annual planning and strategy session was held on July 6th. Our new board members as well as our faithful and loyal past board members were in attendance to map out the future of Portland Chapter CSI. We brainstormed some exciting ideas to not only strengthen our membership, but grow our education offerings and our fun/networking events.

Just this month we have the SOLD OUT CSI Golf tournament at Lewis River Golf Course on the 25th, and the very next day is the PRAXIS LIVE concrete event. Information on both of those are located in this newsletter and on our [website](#). Learning & Libations Series have some exciting tours and presentations planned this next fiscal year, and the Programs Committee also has some great stuff on the horizon.

A huge thank you goes out to the outgoing board members- Corey Morris as Secretary, Linda Jones and Kathy Hempel serving as Directors. And be sure to welcome our new board members, Ali Clark as President Elect, Jake LaManna as Secretary, and Kourtney, Alexei, and Geoff as our new Directors. We honored they have chosen to serve and happy to have such devoted and talented professionals on our board.

## CSI PORTLAND NEWS

### Let the Golfing Begin

*Erica Bitterman-Ryon, CSI, Golf Committee Chair*



This year's Annual CSI Golf Tournament is August 25th at Lewis River Golf Club. It will be a 12:30 PM shot gun start. Prizes will be awarded for 1st, 2nd, and 3rd, KP, LD, Longest Putt and Straight Drive and of course team that tries the hardest. There will be Raffle tickets sold as well for some great prizes donated by our sponsors.

The CSI Annual Golf Tournament is a fund raising event for our Scholarships. Scholarships are given out for those that want to further their education in the AEC industry by taking the CDT Exam or next level exams. Your sponsorship and participation in this event allows CSI to help members in the AEC Industry and those emerging professionals that someday may be working with us in this wild and crazy industry. Please help make this year a success and participate in the golf tournament. You don't have to be a pro to play, just have to know how to have fun. If you are just not a golfer in any way shape or form, you can be a sponsor and help that way. Come out and network, man a tee box, play games and give out prizes. You can also donate Raffle Prizes for after dinner. Got some Swag you wanna get out there to help promote your firm? This is the perfect chance to do so.

It's a lot of fun! You're out of the office in the sun networking, laughing, and enjoying the day. HOW AWESOME IS THAT!

[REGISTER OR SPONSOR HERE >](#)

### New Board Members Announced

*Kourtney Strong, CSI, Board Director*

CSI Portland is excited to announce the results of our Chapter Election. We all look forward to another great year! Our 2016-2017 Portland Chapter Leadership is as follows:

8A-5P  
Walsh Construction

**September 7-9**  
[CONSTRUCT](#)  
Austin, TX

**September 13**  
Chapter Meeting:  
Construction Tour  
AMAA New Offices

**September 20th**  
Learning & Libations  
Series: Roofing 101

**October 18**  
Learning & Libations  
Series: Roofing 201

**November 8**  
Chapter Meeting: Law in  
Design & Construction:  
Who's At Risk

**December 13**  
Multi-Generational Panel:  
Design/Construction and  
the Changing of the  
Guard

**December 15**  
Learning & Libations  
Series: Roofing 301

CSI Sponsors

[Support CSI, Learn  
How Here >](#)

## Officers

- President - Ellen Onstad, Dodge Data & Analytics
- President Elect - Alicia Clark, Emerick Construction
- Secretary - Jake LaManna, Walsh Construction
- Treasurer - Alexander Lungershausen, Hennebery Eddy Architects
- Past President - Cherise Lakeside, Ankrom Moisan

## Board Members

- Director - Leslie Case, Laird Plastics
- Director - Tony Divincenzo, Ideate, Inc.
- Director - Marty Houston, Walsh Construction
- Director - Geoff Jenks, Interface Engineering
- Director - Kourtney Strong, BLRB Architects
- Director - Alexei Holstein, Siemens

## Architectural Scavenger Hunt Recap

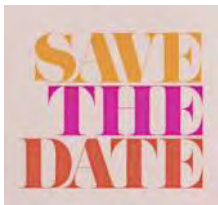
*Alicia Clark, CSI, Programs Committee Chair*



Last month's Annual Architectural Scavenger Hunt was a lot of fun. We had three teams that matched all the buildings with the clues correctly! Our winning team was able to finish the hunt in only 20 minutes, although they did have a few neighborhood residents to

help them out. Next year we will have to make the clues a little harder. A big thank you to Kourtney Strong with BLRB for helping me put the clues together, and to Leslie Case with Laird Plastic for sponsoring the happy hour! Keep an eye out for our upcoming programs this fall. We are taking August off so that everyone can enjoy the Golf Tournament August 25th (there are still a few sponsorship spots open!), and we will be back September 13th with our Annual Building Tour. We are still working out the details, but you can be sure of a fun and educational construction tour!

## Save the Date



**August 25, 2016**

Annual CSI Golf Tournament

Our Annual day in the sun at Lewis River Golf Course, to raise money for our Scholarship Program.

Sponsorships are filling up fast, so make sure to sign-up soon!

**August 26-27, 2016**

CSI/Praxis Portland - Two Day Concrete/Flooring Symposium

This is special two-day event with a focus on CSI Division 03. The event will include panel discussions, hands-on contractor training/certification and up to 8 AIA credit hours of classroom learning available for the first event of its kind in Portland, OR.

**September 7-9, 2016**

CSI National Conference CONSTRUCT: Beyond Limits

Plan now to attend the only national trade show and educational conference for the commercial building teams that spec and source building products. Three days filled with education, exhibit hall,



networking and unprecedented opportunity to see, touch and experience the products up close.

Austin, TX

September 13, 2016

Site Tour - AMAA new office / 8L

Watch our website for details

November 8, 2016

Law in Design and Construction: Who's at Risk?

Design and Construction can be a contentious industry. Construction Defect, digital documents, project warranties, can all bring up lots of questions about the correct way to do things, and the actual way things get done. Come ask your questions to our panel of experts.

December 13, 2016

Multi-Generational Panel: Design/Construction and the Changing of the Guard

Speed Mentoring Event

Baby Boomers are retiring, Millennials are entering the workforce in-mass, and the Recession threw a wrench in the whole system.

Sponsorship Opportunities Available! Contact [Ali Clark](#) for more details!

## EDUCATION

### Learning & Libations: Low-Slope Roofing Series

*Jake LaManna, CSI-EP, CDT, Education Chair*



Join us this fall for our Learning & Libations vertical series on the low-slope roofing assembly.

September 20th - Roofing 101

Ever wonder what the difference between BUR, SBS, TPO, and PVC are when discussing roofing? This event will focus on the terminology and basic summaries the different low-slope roofing systems. We'll also discuss a general overview of how these systems are described in the specifications. The goal will be for you to walk away with a matrix that describes the benefits and drawbacks of the different low slope roofing systems relative to one another, which can be used to help inform early discussions about roofing options for future projects.

October 18th - Roofing 201

In the second session in this L&L Vertical Series, we will delve into standard detailing of common elements for different low-slope roofing systems. We will also address more unique specification do's and don'ts with regards to the detailed roofing systems. Stay tuned for more details in September's Predictor!

December 15th - Roofing 301

Come listen to a panel of roofing experts from various aspects of the building industry share their personal anecdotes on what works, what does not work, and discuss how to improve the delivery of roofing projects of high quality, on time, and on budget. Again, stay tuned for more details in September's Predictor!

## MEMBERSHIP

### Update to Chapter Dues

*Kourtney Strong, CSI, Board Director*

We have an update to all members regarding our previous notice of increase for our Portland Chapter dues. The Portland Chapter dues will not increase this year as announced, this increase has been postponed to 2017-2018. Look for a reminder of the increase as the new date comes around.

## New & Renewed Members - May 2016

*Lee Kilbourn, FCSI, FAIA, Membership Chair*

- Leslie Case, BS, CSI; Laird Plastics; member since 2014
- Russel Donohue, RA, CSI, CDT, NCARB; CH2M Hill, Inc.; member since 2007
- Dan Elliott, CSI; Spec Products, Inc. ; member since 2000
- Steven Gray, CSI, CDT; Rodda Paint Company; member since 2014
- Scott Harris, CSI; JRJ architects, llc; member since 1999
- Jim Hutchin, CSI; Bridgetown Sales, LLC; member since 2009
- Patrick Lucas, CSI-EP; R-Stud; member since 2016 - *NEW*
- Alexander Lungershausen, CSI, CCS, AIA, LEED AP; Hennebery Eddy Architects; member since 2003
- Mark Moyes, CSI; KPFF Inc. ; member since 1995
- Stanley Nelson, CSI, CDT; member since 1975
- Thomas Wesel, CSI; JRJ architects, llc; member since 2016 - *NEW*
- Mike Bair, CSI: Trus Joist/Weyerhaeuser Engineering Services; member since 2016 - *NEW*

## SOCIAL MEDIA

### Get Social



CSI members in Portland, across the country and beyond are sharing information on LinkedIn discussion groups, Twitter, and blogs that are full of great content. We encourage you to connect with these professionals and expand your network. We learn something new from them each and every day.

Featured blogs this month:

[Time for Some Fun](#), Sheldon Wolfe

CSI's mission is to advance building information management and education of project teams to improve facility performance. We are the only organization that brings together all the players in the built industry.

Portland Chapter CSI, PO Box 6683, Portland, OR 97228

[SafeUnsubscribe™ jlamanna@walshconstruction.com](#)

[Forward this email](#) | [Update Profile](#) | [About our service provider](#)

Sent by [portlandcsi@gmail.com](mailto:portlandcsi@gmail.com)



VOLUME 56 | ISSUE 9 | SEPTEMBER 2016

## IN THE SPOTLIGHT

### September Chapter Meeting: Building Tour of Block 8L

*Alicia Clark, CSI, CDT, Programs Chair*



Tuesday September 13, 2016  
4:30 PM to 8:00 PM PDT

Come get a behind the scenes construction tour of Block 8L, Ankrom Moisan's New Office in Old Town/China Town. This six-story, mixed-use building will house ground floor retail, U of O's new MBA and Sports Product Management programs, Ankrom's office space, and 65 residential units. The building will include 107 longterm and 10 shortterm bicycle parking spaces. No onsite vehicular parking is proposed.

Appetizers and networking will occur after the tour at Kell's Irish Pub.

[REGISTER HERE >](#)

## PRESIDENT'S MESSAGE

### President's Message

*Ellen Onstad CSI, CDT, Chapter President*



How did it get to be September? It seems like the kids just got out of school yesterday. For me, this summer has flown by. It seems like there is more work out there, we are all busier, and are working more hours.

So, why take the time and money to spend on CSI education offered both locally and nationally (other than we are a great group of people, that is)?

1. We have some great Learning and Libations series coming up (keep a look out in your email and on our website).
2. Our Programs are top notch. In September we have tour of the Block 8L Building and a unique opportunity to see inside an architect's office before they move in.
3. Networking, a fancy way to say person-to-person contact. It is more than the casual greeting at events and includes getting

## Got News?



## In this Issue

[September Chapter Meeting: Building Tour](#)

[President's Message](#)

[CSI Annual Golf Tournament Great Success](#)

[Save the Date](#)

[Learning & Libations Year in Review](#)

[Portland Chapter Membership Committee Stymied](#)

[Get Social](#)

[Let's Fix Construction](#)

[Masonry: Beyond the Details](#)

[Call for Volunteer Design Professionals & Architecture Students](#)

## Upcoming Events

**September 7-9**  
[CONSTRUCT](#)  
Austin, TX

**September 13**  
[Chapter Meeting:](#)

better acquainted with others in our construction industry and becoming a trusted advisor--someone who will be used as a resource for those tough, one-of-a-kind products and buildings.

By the time you read this, some of the members of Portland Chapter will be headed off to Austin, Texas for CONSTRUCT, the national CSI conference. As in years past, it is four days packed with education, networking, trade show and lots of fun.

In the middle of it, I have the distinguished pleasure and honor to accept the Outstanding Chapter Accommodation again this year. I am so proud of this chapter; it is wonderful that the rest of the nation sees everything we are doing as well. I believe there are a few other Institute awards that I may need to find room in my suitcase for, but more about that next month.

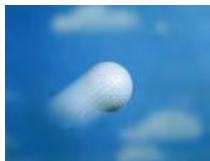
My presidential advice as we careen into the second half of 2016?

- Enjoy the time we have; Christmas will be here before you know it. (If you shop at Costco you know it's already here.)
- Get involved, join a committee or take on a new task to stretch yourself.
- Attend something new.
- Speak with someone you haven't met at chapter events (they may be just as nervous as you).
- Don't work too much; time with family and friends is not something you can get back once the opportunity is missed.
- Enjoy fall! It is beautiful in the Pacific Northwest, and we are lucky to be living here. And, while the weatherman has us in the triple digits' through the end of August, we know the winter rain is just around the corner.

## CSI PORTLAND NEWS

### CSI Annual Golf Tournament Great Success

*Erica Bitterman-Ryon, CSI, Golf Committee Chair*



We were a sold out show again this year. Thank you to all our sponsors and golfers for making the 2016 Annual CSI Golf Tournament a great success and a wonderful time (despite the heat). We all survived the 95-degree weather and came out smiling in the end. We hope all that attended will share their

adventure with others and joins us again next year.

Of course this event does have a great purpose and cause. The money raised helps provide scholarships to those that want to further their education in the A/E/C industry. Have you heard about the CDT exams? If not, check into certification program on our website. The scholarships we award from the proceeds of our golf tournament pay for an 8-week study classes, study materials, and the exam fee. These scholarships not only help the recipients, but you in the industry when you interact with professionals that understand spec writing from all perspectives.

#### **In gratitude to our sponsors**

And of course we could not put on this event without the amazing sponsors that contribute every year. HUGE THANKS to you all for helping make things easier on me and jumping in with both feet this year.

Dinner Sponsors: Bain Associates and Precision Images  
Thank you for our wonderful Mexican Buffet this year for dinner.  
Yummy in everyone's tummy.

[Construction Tour of Block 8L, AMAA New Offices](#)

**September 20h**  
[Learning & Libations Series: Roofing 101](#)

**October 11**  
[Member Orientation](#)

**October 18**  
[Learning & Libations Series: Roofing 201](#)

**November 8**  
[Chapter Meeting: Law in Design & Construction: Who's At Risk](#)

**December 13**  
[Multi-Generational Panel: Design/Construction and the Changing of the Guard](#)

**December 15**  
[Learning & Libations Series: Roofing 301](#)

---

CSI Sponsors

[Support CSI, Learn How Here >](#)

Hot Dog Stand Sponsors: DeaMor Associates and Faustrollean Fixtures. Thank you for getting everyone off to a good start with a some fuel.

Last Ball Standing Sponsor: Johnson Air Products. Our disco ball challenge. There are sparkly disco balls all over Lewis River now.

Tee Box Sponsors: For those that braved manning a tee box and sitting out all day greeting people as they came by, thank you. Thank you for all you efforts, the games, the snacks, drinks and just taking time out to hang with us.

1. Vertrotech Saint-Gobain
2. Firestone Building Products
3. Armstrong World
4. Oldcastle BE
5. Sherwin-Williams
- 6.
7. Woodfold
8. Creative Design Concepts
9. Ameriprise Financial Services
10. Ideate
11. Airefo Co
12. Stanley
13. Cosella Dorken
14. Weller Associates
15. NW Wall & Ceiling Bureau
16. Tranquility natural Health
17. Professional Roof Consultants
18. Market Contractors

Game holes - these are the long drive, closest to the pin, longest putt, straight drive and hole in one contest holes.

- Hole in One - Professional Roof Consultants ROCK. For many years they have sponsored not just the tee box, but the \$10,000 hole-in-one contest for the tournament and covered 3 other prize holes. Thank you for doing the extra work and bringing some extra fun and excitement to the tournament.
- Straight Drive - Behr Paint, Toto USA
- Closest to the Pin (KP) - JLD Construction Consulting, Fortifiber
- Long Drive (LD) - Forbo Flooring
- Longest Putt - Ankrom Moisan Architects, Willamette Graystone

#### **Tournament Big Winners**

Bet you wanna know who are big winners were. Well you should have come to the tournament, it is top secret. Just kidding, I am happy to announce our proud winners of the 2016 CSI Golf Tournament.

1. Market Contractors (with a score of 59).
2. OldCastle Building Envelope (with a score of 60).
3. Hoffman Construction (with a score of 61).
4. Boobie Prize - Professional Roof Consultants team 4.

Special game hole prizes went to Ray Clevenger for Men's Longest Putt on #5, Bruce Ryan for Men's KP on #11, Mark Atteridge for Men's Straight Drive on #18, Caleb Beaudin for Men's Longest Drive on #13, Ali Clark for Ladies KP on #7, Cherie McNabb on Ladies Longest Drive #8 and Jennifer Beattie on Ladies Longest Putt #10. CONGRATS to all our winners!

I hope all of you will return next year and join us again. We are tentatively considering the fourth Thursday of August 2017. Watch for a Save the Date in December. FORE !!!!!

---

# Save the Date



**September 7-9, 2016**

CSI National Conference CONSTRUCT: Beyond Limits  
Plan now to attend the only national trade show and educational conference for the commercial building teams that spec and source building products. Three

days filled with education, exhibit hall, networking and unprecedented opportunity to see, touch and experience the products up close.

**November 8, 2016**

Law in Design and Construction: Who's at Risk?

Design and Construction can be a contentious industry. Construction Defect, digital documents, project warranties, can all bring up lots of questions about the correct way to do things, and the actual way things get done. Come ask your questions to our panel of experts.

**December 13, 2016**

Multi-Generational Panel: Design/Construction and the Changing of the Guard

Speed Mentoring Event

Baby Boomers are retiring, Millennials are entering the workforce in-mass, and the Recession threw a wrench in the whole system.

Sponsorship opportunities available! Contact [Ali Clark](#) for more details!

## EDUCATION

### Learning & Libations: Low-Slope Roofing Series

*Jake LaManna, CSI-EP, CDT, Education Chair*



Join us this fall for our Learning & Libations vertical series on the low-slope roofing assembly.

**September 20th - Roofing 101**

Ever wonder what the difference between BUR, SBS, TPO, and PVC are when discussing roofing?

This event will focus on the terminology and basic summaries the different low-slope roofing systems. We'll also discuss a general overview of how these systems are described in the specifications. The goal will be for you to walk away with a matrix that describes the benefits and drawbacks of the different low slope roofing systems relative to one another, which can be used to help inform early discussions about roofing options for future projects.

**October 18th - Roofing 201**

In the second session in this L&L Vertical Series, we will delve into standard detailing of common elements for different low-slope roofing systems. We will also address more unique specification do's and don'ts with regards to the detailed roofing systems. Stay tuned for more details in September's Predictor!

**December 15th - Roofing 301**

Come listen to a panel of roofing experts from various aspects of the building industry share their personal anecdotes on what works, what does not work, and discuss how to improve the delivery of roofing projects of high quality, on time, and on budget. Again, stay tuned for more details in September's Predictor!

## MEMBERSHIP

### Portland Chapter Membership Committee Stymied

*Lee Kilbourn, CSI, Membership Chair*



For the second time in three years, the National Institute has "upgraded" its computer systems resulting in significant delays in reporting member payments. Our Chapter Membership Committee then has no information about which members need to be reminded to renew their membership.

For today's example (8/17/2016), one of our members sent in their renewal payment to the Institutes' PO Box on July 18 which cleared the members' bank on July 22. The CSI Chapter/Region Leaders Reports still shows their membership expiration date to be 5/31/2016, along with five other members. One member is no longer in our Industry, leaving four that have received messages from me.

Portland Chapter suffers along with the Institute when renewals are delayed because, in my opinion, late-paying members too easily decide not to renew. Portland Chapter lost four members in April. One member retired.

On a happier note, Portland Chapter has six new members so far this month.

## SOCIAL MEDIA

### Get Social



CSI members in Portland, across the country and beyond are sharing information on LinkedIn discussion groups, Twitter, and blogs that are full of great content. We encourage you to connect with these professionals and expand your network. We learn something new from them each and every day.

Featured blogs this month:

[Trade Show vs. Online Education? Why you should attend CONSTRUCT](#),  
Cherise Lakeside

[Product Manufacturers: Are you doing it right? Construction Education for Product Reps](#), Cherise Lakeside

## INDUSTRY NEWS

### Let's Fix Construction!



Tired of the same stories and the same results? We are too! Good news, things are looking up.

With years of experience in the Construction Specifications Institute demonstrating 'the way things are supposed to be' in construction, it is sometimes too easy to offer complaints without offering solutions. While we aren't here to offer solutions to all of the problems you face, we are here to let you know that you aren't the only one seeing issues in the office or in the field. We are here to offer our point of view, our thoughts on what we see and perhaps an answer or two along the way that you can put to good use.

Would you like to contribute your voice? The contributors of Let's Fix Construction share their knowledge to anyone that will listen, whether on their personal websites, on social media.

We are always looking for like-minded individuals to share your forward- thinking constructive thoughts. It is not a true problem unless

you offer a true solution!

Contact us below or at any of the following.

Web <http://www.letsfixconstruction.com/>

Email [letsfixconstruction@gmail.com](mailto:letsfixconstruction@gmail.com)

Twitter @FixConstruction

Facebook @LetsFixConstruction

LinkedIn Let's Fix Construction

---

## Masonry: Beyond the Details



Wednesday, September 7th, 2016  
Widmer Brothers Brewery, West Wing  
947 N. Russell Street  
Portland, Oregon 97227

### Schedule:

8:30-9:00am Registration  
9:00-10:30am Masonry Beyond the Details  
10:30-11:30am Designing, Detailing, and Constructing Masonry Rain Screen Wall Systems  
11:30-12:30am Lunch and Mingling/Discussion about IMI and BAC Services

**Cost:** Free, but registration is required.

**Registration:** Fill out the [PDF](#) and email to Marcy Rhoades at [mrhoades@imiweb.org](mailto:mrhoades@imiweb.org).

**Continuing Education:** Meets AIA/CES criteria for 2.5 H/S/W learning units

**Brief Description:** The seminar takes participants beyond the details ([www.masonrydetails.org](http://www.masonrydetails.org)), simultaneously exploring each condition through construction site photos, failure analyses, building code requirements, and best practice recommendations. This program investigates the building science and evolution of wall theory from mass walls to drainage and cavity walls; finally to both pressurized and non-pressurized rain screen wall systems. For more information, see the flyer [HERE >](#)

---

## Call for Volunteer Design Professionals and Architecture Students



Inspire elementary school students to examine and learn about the built environment through the Architecture Foundation of Oregon's Architects in Schools (AiS) program. AiS matches professional architects and other design professionals with primarily 3rd, 4th and 5th grade teachers for a 6-week classroom residency (approximately 1-2 hours a week per class), offered free of charge to schools. Design professionals volunteer their time because sharing their passion for architecture with students energizes them. Teachers continuously say AiS has a tremendous impact on their students. With AiS growing exponentially each year, the demand for design professionals continues to rise. The Architecture Foundation of Oregon invites you to be part of Architects in Schools, impacting over 3,800 students in Oregon each year.

For more information on the program, [VISIT THE WEBSITE >](#)

For application info, [CLICK HERE >](#)



Inquiries and questions, contact [Candice](#) at 503-542-3823.

---

*CSI's mission is to advance building information management and education of project teams to improve facility performance. We are the only organization that brings together all the players in the built industry.*



VOLUME 56 | ISSUE 10 | OCTOBER 2016

[Got News?](#)

IN THE SPOTLIGHT



## October Chapter Meeting Portland State Viking Pavilion: Project Delivery and Collocation

*Alicia Clark, CSI, CDT, Programs Chair*



Wednesday, October 11th  
5:30 - 8:30 PM  
Widmer Bros. Brewer

Located on Portland State University's campus at the south end of the South Park Blocks, this project involves the renovation and expansion of PSU's Peter W. Stott Center. The project transforms the existing outdated, inward-focused building into a vibrant and welcoming 138,500-square-foot facility that will support a wide range of functions including academics, athletics, and general student use. A centerpiece of the project will be the creation of the Viking Pavilion, a new multi-use arena that will host events ranging from athletic competitions to concerts to commencements. Come join Miles Woofter and Justin Cook as they discuss this vibrant and challenging project at Oregon's Largest Public University. [REGISTER HERE >](#)

In this Issue

[Learning & Libations](#)  
[Year in Review](#)

[President's Message](#)

[2017 Sponsorship](#)  
[Opportunities Open](#)

[Save the Date](#)

[Learning & Libations](#)  
[Year in Review](#)

[CDT & Advanced](#)  
[Certification](#)  
[Scholarships](#)

[Autumn Member](#)  
[Orientation](#)

[Portland Chapter](#)  
[Membership Committee](#)  
[Stymied](#)

[Portland Chapter](#)  
[Membership Committee](#)  
[Stymied](#)

[New Social Media](#)  
[Channel for CSI](#)

[Job Opening](#)

PRESIDENT'S MESSAGE

## President's Message

*Ellen Onstad, CSI, CDT, Board President*



Greetings from Exit 22 at the Austin airport. My flight to San Francisco is delayed so I have a few minutes to type up a summary of the last few days. CONSTRUCT 2016 and CSI Annual meeting is a fun filled, education packed, huge networking event that happens once a year. As many of you know, I started out attending CSI national conventions as a child and attended the kids programs for many years. When my daughter was younger and my mother was alive they would attend the spouse programs together and always seemed to have a good time. [READ MORE >](#)

Upcoming Events

**October 11**  
[Member Orientation](#)

# 2017 Sponsorship Opportunities Open



Portland CSI has been recognized and rewarded for being one of the top CSI chapters in the United States. Our members number over 260 and growing. We have a wide variety of disciplines engaged in bringing the build community together under one umbrella, which is what makes sponsoring event(s) with CSI an unparalleled opportunity for your company and brand recognition.

Many companies are moving away from using traditional media to promote their brand, relying more on sponsorship and event opportunities. Please consider event marketing or sponsoring one or more of the monthly or yearly Portland CSI events. Detailed information is available [HERE >](#)

If you have questions please feel free to e-mail CSI Portland directly at our new email address [office@portlandcsi.org](mailto:office@portlandcsi.org).

---

## Save the Date

### November 8, 2016

Law in Design and Construction: Who's at Risk?  
Design and Construction can be a contentious industry. Construction Defect, digital documents, project warranties, can all bring up lots of questions about the correct way to do things, and the actual way things get done. Come ask your questions to our panel of experts.

### December 13, 2016

Multi-Generational Panel: Design/Construction and the Changing of the Guard  
Speed Mentoring Event  
Baby Boomers are retiring, Millennials are entering the workforce in-mass, and the Recession threw a wrench in the whole system.

### January 10, 2017

Economic Forecast  
For a full understanding of the issues impacting construction please join Cliff Brewis with Dodge Data and Analytics for a breakdown of the industry and a review of the influencers impacting the various sectors.

### February 2017

Grill the Developer  
The grill is heating up again, so watch out Developers!

### August 24, 2017

Annual Golf Tournament  
Lewis River Golf Course

Sponsorship opportunities available! Contact [Ali Clark](#) for more details!

## EDUCATION

### Learning & Libations: Low-Slope Roofing Series

*Jake LaManna, CSI, CDT, Education Chair*

**October 11**  
[Chapter Meeting: PSU Viking Pavilion Project Delivery & Collocation](#)  
5:30-8:30 PM  
Widmer Bros. Brewery

**October 18**  
[Learning & Libations Series: Roofing 201](#)  
5:30-7:30 PM  
Walsh Construction

**November 8**  
Chapter Meeting: Law in Design & Construction: Who's At Risk

**December 13**  
Multi-Generational Panel: Design/Construction and the Changing of the Guard

**December 15**  
Learning & Libations Series: Roofing 301

**January 10, 2017**  
Chapter Meeting: Annual Economic Forecast

**February 14**  
Chapter Meeting: Grill the Developer

**August 24**  
[Annual Golf Tournament](#)  
Lewis River Golf Course

---

## CSI Sponsors

[Support CSI, Learn How Here >](#)



Join us this fall for our Learning & Libations vertical series on the low-slope roofing assembly.

### October 18th - Roofing 201

In the second session in this L&L Vertical Series, we will delve into standard detailing of common elements for different low-slope roofing systems. We will also address more unique specification do's and don'ts with regards to the detailed roofing systems. [REGISTER HERE >](#)

### December 15th - Roofing 301

Come listen to a panel of roofing experts from various aspects of the building industry share their personal anecdotes on what works, what does not work, and discuss how to improve the delivery of roofing projects of high quality, on time, and on budget. Again, stay tuned for more details in September's Predictor!

## CERTIFICATION

### CDT and Advanced Certification Scholarships

*Cherise Lakeside, CSI, CDT, Certification Chair*



The Portland Chapter of CSI will again be offering Emerging Professional scholarships for CDT and advanced certification scholarships for existing Portland CSI Members. More information will be available in the November and December newsletters. Keep your eyes peeled for this great opportunity!

## MEMBERSHIP

### CSI's Autumn Member Orientation

*Alicia Clark, CSI, CDT, Programs Chair*



Portland CSI will be hosting our Autumn New Member Orientation Tuesday, October 11, 2016, right before our October Chapter Meeting. This event is open to all New and Existing CSI members and is an opportunity to meet the board, and learn how to make the most out of your membership experience.

Interested in Joining a Committee or becoming more involved? Come learn about the different committee we have available and meet some of the committee chairs. Joining a committee is a great way to meet new people and develop your professional skills.

Know someone interested in becoming a member? Invite them to come along and hear more about what CSI has to offer. Everyone is welcome. [RSVP HERE >](#)

This is a FREE event prior to our regular chapter meeting. Our [October Chapter meeting](#) will be held right after the orientation, so make sure to also sign up for the presentation on the PSU Viking Pavilion.

## Membership

*Lee Kilbourn, FCSI, Membership Chair*

New and renewed members as of June 2016

- Mike Aguilar, CSI; Stonhard; member since 2015
- Jaci Amend, CSI; Moxie Management; member since 2013
- Mike Bair, CSI; Trus Joist/Weyerhaeuser; member since 2016 -

## NEW

- Julie Bronder, CSI, AIA; ZGF Architects LLP; member since 1993
- Maddie Carde, BA, CSI, USGBC; Boral; member since 2015
- Mark Cooney, CSI, CDT; Hubbell; member since 2005
- Jody "Joe" Cross, CSI, AHC; Allegion, PLC; member since 1998
- Joseph Gehlen, CSI; Kramer-Gehlen & Associates, Inc.; member since 1988
- Brad Glauser, CSI, SAME; Wausau Window & Wall Systems; member since 2015
- Jordan Mason, CSI-EP; Thyssen Krupp; member since 2016 - **NEW**
- Richard McBride, CSI; McBride Architects, P.C.; member since 1996
- Glen Miller, CSI; GA Miller Architecture; member since 1997
- Ian Murphy, CSI, CDT; Exterior Allied Systems LLC; member since 1992
- D. Dustin Posner, CSI, CCCA, AIA, NCARB; Clark/Kjos Architects LLC; member since 2009
- Ray Rauscher, CSI; Speedy Glass Commercial Division; member since 2015
- Austin Sloat, CSI, AIA; Neumann Sloat Architects LLP; member since 2009
- Alan Taylor, CSI; Ankrom Moisan Architects, Inc.; member since 2016 - **NEW**

## Members Emeritus with Anniversary Dates in May and June

- *Fred Chomowicz, CSI, Member Emeritus; member since 1983*
- *Deane "Bud" Smith, CSI, Member Emeritus; member since 1959*
- *Lee Kilbourn, FCSI, Member Emeritus, CCS, FAIA; member since 1967*
- *Samuel Ream, CSI, Member Emeritus, AIA; member since 1978*

---

## Goodbye to an Old Friend

I am saddened to be the bearer of bad news. David Maughan, specifier and longtime member of Puget Sound Chapter, passed away unexpectedly on Friday afternoon, September 2nd from complications due to lung inflammation. David was a great guy and will be sorely missed by his family and many, many friends.

## SOCIAL MEDIA

### New Social Media Channel for CSI



This month, we have made a change. Whereas our LinkedIn page was simply a group page, we have now created an official Portland CSI business page to better reach our members and share exciting news. Be sure to follow us on our new LinkedIn page and all

of our social media channels by clicking the icons at the top of this newsletter.

CSI members in Portland, across the country and beyond are sharing information on LinkedIn discussion groups, Twitter, and blogs that are full of great content. We encourage you to connect with these professionals and expand your network. We learn something new from them each and every day.

Featured blogs this month:

[Get Your Hands Dirty!](#) by Sheldon Wolfe, RA, FCSI, CCS, CCCA, CSC

## INDUSTRY NEWS

## Job Opening: Specification Representative



Collaborate with sales and marketing to develop and implement a specification strategy to target large architectural and commercial construction firms with the goal of increasing awareness, specification and sales of Roseburg composite products.

[DOWNLOAD CRITERIA HERE >](#)

*CSI's mission is to advance building information management and education of project teams to improve facility performance. We are the only organization that brings together all the players in the built industry.*



VOLUME 56 | ISSUE 10 | NOVEMBER 2016

## IN THE SPOTLIGHT

## November Chapter Meeting The Future of Specifications: A Panel Discussion

*Alicia Clark, CSI, CDT, Programs Chair*

Tuesday, November 8th  
5:30 - 8:00 PM  
Elephant's on Corbett

The construction industry is rapidly changing with new technologies, increased awareness of sustainability and resiliency, and many firms no longer have a dedicated spec writer. Most people think specifications are just that giant door stop, and many emerging professionals don't want to be pigeon-holed into writing specifications. Some people believe that the specifier will always exist, but the role of the specifier will inevitably change, and Portland CSI wants to lead a conversation on what that might look like.

Come join our panel of distinguished specifiers who will be discussing the current and future use of specifications, their best tips, pet peeves, product reps, and how to help train the next generation.

[REGISTER HERE >](#)

Sponsored by:



## PRESIDENT'S MESSAGE

## President's Message

*Ellen Onstad, CSI, CDT, Board President*

Did you attend the October New member orientation? Where you impressed with Ali and all the information she had to offer? Did you think about joining a committee or becoming more involved in the Portland Chapter? Which one are you considering?

What does it mean to join a committee? Sometimes

**Got News?**

## In this Issue

[November Chapter Meeting](#)

[President's Message](#)

[October Meeting Recap](#)

[Got Skills?](#)

[Don't Forget to Update Your Email Preferences](#)

[2017 Sponsorship Opportunities Open](#)

[Save the Date](#)

[Learning & Libations Series](#)

[In Memory](#)

[Members Renewed](#)

[Expand Your Horizons](#)

[Drones Over the Northwest](#)

[Building Envelope & Rooftop Quality Assurance 2-Day Symposium](#)

## Upcoming Events

**November 8**

it's just gathering with friends and brainstorming ideas, sometimes it's getting more things on our two do list.

We all have enough to do now - why would we want to join a committee with something else to do. I have no idea. I don't have time for the things I have agreed to. I don't want to do anything else. What other things aren't we ready for? Our job? How do we fix it? More education? We are always learning more - I know there are things I don't know at work all the time. How do you find things? Do you go to co-workers? Do you go to your CSI Friends and ask them? Or do you research on the internet? Which is how you find things out?

[READ MORE >](#)

## CSI PORTLAND NEWS

### October Recap: PSU Viking Pavilion & Integrated Project Delivery Lite



Last month we had a great presentation by Woofter Architects and Fortis Construction on the renovation and expansion of the PSU Viking Pavilion. They are working with a very tight budget and tight schedule, so the project team decided to use an Integrated Project Delivery method to help make sure the project is successful. The Woofter design team collocated in the Fortis office to allow for a real-time collaborative process to finish the construction documents on time and on budget. Make sure to check out the video on our [Portland CSI YouTube Channel](#).

### Got Skills?



CSI Portland is looking for volunteers that could very well be passionate to join the 2016-2017 Publicity Committee. CSI prides itself in making committee participation easy and enjoyable! Each committee allows you to volunteer for specific events that fit within your time schedule.

The Publicity Committee members will assist the committee chair in ensuring the CSI website and social media sites maintain current and relevant information and content. Committee members will be asked to attend CSI events to take pictures for posting on website and social media sites. These are just a few of the activities. Collaboration is our main task working with all CSI committees to make sure we have all the ammunition needed to properly and successfully publicize CSI Portland Chapter and all we have to offer. If you have an energetic, creative side and enjoy working with a variety of people and professions, then this is the committee for you!

Contact us at [office@portlandcsi.org](mailto:office@portlandcsi.org) for more information.

### Don't Forget to Update Your Email Preferences



The AEC Industry is booming right now, and we are all being bombarded with emails constantly. However, we don't want to miss out on any interesting events. So to help cut down on unwanted email, Portland CSI has set up various email lists that you can subscribe

[Chapter Meeting: The Future of SpecificationsA Panel Discussion](#)

**November 15**  
[ASPE Presents Drones Over the Northwest](#)

**November 16**  
[Learning & Libations Series: Are We Ready for the Big One?](#)

**December 1-2**  
[RCI Puget Sound Chapter Presents Building Envelope & Rooftop Quality Assurance 2-Day Symposium](#)

**December 13**  
Multi-Generational Panel: Design/Construction and the Changing of the Guard

**December 13**  
Holiday Mixer & Ugly Sweater Contest

**December 15**  
Learning & Libations Series: Roofing 301

### 2017

**January 10, 2017**  
Chapter Meeting: Annual Economic Forecast

**February 14**  
Chapter Meeting: Grill the Developer

**March 16**  
[CSI Industry Forum 2017](#)

**August 24**  
[Annual Golf Tournament](#)  
Lewis River Golf Course

### CSI Sponsors

[Support CSI, Learn How Here >](#)



to.

Just want to hear about the Learning and Libations Events? No problem. Really like our Golf Tournament and Industry Forum? You can sign up for those list too! This is a great way to make sure you are getting invited to the events that you are interested in. We also want to make sure that all your contact information is up to date. We have a lot of great events coming up in the next few months, and don't want you to miss out on them! So, please take a moment to update your email subscription preferences. Just [CLICK THIS LINK](#) and enter in your email address. It should only take 30 seconds, and will be well worth it to make sure you are getting the most out of Portland CSI.

---

## 2017 Sponsorship Opportunities Open



Portland CSI has been recognized and rewarded for being one of the top CSI chapters in the United States. Our members number over 260 and growing. We have a wide variety of disciplines engaged in bringing the build community together under one umbrella, which is what makes sponsoring event(s) with CSI an unparalleled opportunity for your company and brand recognition.

Many companies are moving away from using traditional media to promote their brand, relying more on sponsorship and event opportunities. Please consider event marketing or sponsoring one or more of the monthly or yearly Portland CSI events. Detailed information is available [HERE >](#)

If you have questions please feel free to e-mail CSI Portland directly at our new email address [office@portlandcsi.org](mailto:office@portlandcsi.org).

---

## Save the Date



### December 13, 2016

Holiday Mixer and Ugly Sweater Contest - An Emerging Professional Event

A Joint Event with AIA Emerging Professionals Committee, ASHRAE, and Others

Our Emerging Professional Mixer / Ugly Sweater Contest from Last year is making a comeback as our December Chapter Meeting. This is a fun and festive

networking event that we are co-hosting with other professional organizations in town. While the goal is to get as many emerging professionals in the room as possible, this event is open to anyone and everyone looking to have a good time and expand their network.

### January 10, 2017

Economic Forecast

For a full understanding of the issues impacting construction please join Cliff Brewis with Dodge Data and Analytics for a breakdown of the industry and a review of the influencers impacting the various sectors.

### February 14, 2017 - LUNCH MEETING

Chapter Meeting Topic TBD

We're looking into topics such as the Post Office Master Plan, Vancouver Gramor Development, OSU Cascade Campus. If you have a topic you are really interested in seeing, please email Ali LaManna at [programs@portlandcsi.org](mailto:programs@portlandcsi.org)

**March 16, 2017**

CSI Portland Chapter Industry Forum 2017

Industry Forum 2017, attended by hundreds of designers, engineers, contractors, product reps, and owners, provides the AEC community an annual and stimulating look at what's innovated in the industry. More details will be announced soon! Mark your calendars! Sponsorship opportunities are available now!

**August 24, 2017**

2017 Portland Chapter CSI Golf Tournament at Lewis River

The golf course will be calling your name soon enough, so why not put it on your calendar early? Find your golf mojo and join us for a fun-filled day in the sun and support the CSI scholarship program in the process. Prizes awarded, raffle tickets available, banquet following, and fun for all.

For more information and registration: [Portland.csinet.org](http://Portland.csinet.org)

Sponsorship opportunities available! Contact [Ali LaManna](#) for more details.

## EDUCATION

### Learning & Libations: Low-Slope Roofing Series

*Jake LaManna, CSI, CDT, Education Chair*



**November 16th - Are We Ready for the Big One?**

The gas explosion on NW 23rd Avenue in Portland was a shock to a lot of people, and one of contractors biggest fears working on construction sites. It is why we have so many safety measures in place to avoid situations like this. However, it has reminded people how vulnerable our infrastructure can be. In response to the explosion, The Oregonian has put together a great article about how NW

Natural has prepared for the "Big One," but it is only one small piece in a large web of interconnected relationships that we as a design and construction industry need to be thinking about when it comes to earthquake preparedness and resiliency.

How are we going to build buildings and infrastructure that will be resilient to a major earthquake or natural disaster? How are we going to convince owners that it is worthwhile to pursue? These are questions we will be addressing in our upcoming Learning and Libations with Kent Yu of SEFT Consulting. Kent has been instrumental in creating the Oregon Resilience Plan and is coming to speak to us on Wednesday, November 16th on how to consider the relationships between different systems need to be considered in creating our own resilience plans at the local level. You can't beat getting beer, pizza, and a whole lot of expertise for only \$10. We hope to see you there! [REGISTER HERE >](#)

**December 15th - Roofing 301**

Join us this fall for our Learning & Libations vertical series on the low-slope roofing assembly. Roofing 101 and 201 have presented, but you can still catch the last in the series. Email

[jlamanna@walshconstruction.com](mailto:jlamanna@walshconstruction.com) for more information.

## MEMBERSHIP

### In Memory

*Lee Kilbourn, FCSI, Membership Chair*



I am sad to report the recent passing for Arnie Schmautz, CSI Member Emeritus on September 13, 2016 at the age of 83 years. He joined CSI in 1979.

Additionally, we lost Ann Rose Gira, wife of R. Dick Gira recently. Dick is a CSI Member Emeritus and was previously President of the Portland Chapter, Regional Director for the Northwest Region, served on the Institute's Education Committee, a member of the Salem and Willamette Valley chapters, had several articles published in the Specifier magazine, as well as a multitude of other activities and expertise. And Rose was with Dick every step of the way at events and meeting many of our members.

A classical piano recital has been established in Rose Ann Gira's name at the University of Indianapolis. First place winners receive an award of \$1,000 and second place wins \$500. For more information, please email R. Dick Gira, Member Emeritus at [richardgira@cox.net](mailto:richardgira@cox.net).

Our CSI community will greatly miss both Arnie and Rose. Our prayers go out to each's family and friends.

---

## Membership

*Lee Kilbourn, FCSI, Membership Chair*

Renewed Members July 2016

- Megan Barber, CSI-EP; Weller Associates, Inc.; member since 2015
- Bruce Brown, CSI, AIA; GBD Architects, Incorporated; member since 1990
- Richard Heiserman, FCSI, CCCA, AIA; Ankrom Moisan Architects Inc.; member since 1986
- Craig Jaeger, CSI, CDT; Jaeger& Erwert General Contractors; member since 1986
- Marc Labadie, CSI; TVA Architects, Inc.; member since 1994
- Erik Lawrence, CSI, AIA, M. Arch, NCARB; RDH Building Sciences, Inc.; member since 2013
- Brian Lee, PE, CSI; PACE Engineers; member since 1997
- Jody Moore, CSI, CDT; DeaMor Associates, Inc.; member since 1984
- Justin Norman, CSI; Woodfold Mfg. Inc.; member since 2010
- Douglas Sams, CSI, CDT, AIA, LEED AP; ZGF Architects LLP; member since 2002
- Stan Vande Bergh, CSI; Portland Bureau of Water; member since 1993
- James Wilson, CSI, CCS; SRG Partnership, P.C.; member since 1989

Members Emeritus with anniversary date in July:

- Robert Cloud, CSI, Member Emeritus, member since 1976
- Arnie Schmautz, CSI, Member Emeritus, member since 1979

## SOCIAL MEDIA

### Expand Your Horizons



CSI members in Portland, across the country and beyond are sharing information on LinkedIn discussion groups, Twitter, and blogs that are full of great content. We encourage you to connect with these professionals and expand your network. We learn something new from them each and every day.

Featured blogs this month:

[Tegularity](#) by Sheldon Wolfe, RA, FCSI, CCS, CCCA, CSC

## INDUSTRY NEWS

## ASPE Presents Drones Over the Northwest



Tuesday, November 15, 2016 at 5:30 PM  
University Place, 310 SW Lincoln Street, Portland, OR  
Cost: \$35/each + bring 1 guest for free (BOGO Special)

Construction projects have utilized aerial photography for decades - if documenting the logistics and the progress of physical site was critical, and if the budget could afford it. With rapid advances in drone access abilities and equipment payloads and shrinking price points, a simple set of photographs has evolved into an enhanced array of "must have" data gathering: high resolution videos, GPS precision, 3D mapping and analysis . . . the "sky's the limit"! Join us as Joe takes us on a virtual flight and explains the ins and outs; and ups and downs of this exciting new technology. [DOWNLOAD FLYER HERE >](#)

---

## RCI Puget Sound Presents Building Envelope and Rooftop Quality Assurance 2-Day Symposium

December 1-2, 2016

Portland Doubletree by Hilton

Two one-day courses offered for professionals interested in field inspections and quality of applications, including material manufacturers, general contractors, quality assurance observers, and field inspectors. [DOWNLOAD FLYER HERE >](#)

---

*CSI's mission is to advance building information management and education of project teams to improve facility performance. We are the only organization that brings together all the players in the built industry.*



VOLUME 56 | ISSUE 12 | DECEMBER 2016

## IN THE SPOTLIGHT

## December Chapter Meeting Ugly Sweater Holiday Mixer: An Emerging Professional Event

*Alicia Clark, CSI, CDT, Programs Chair*



Tuesday, December 13th  
5:30 - 8:30 PM  
Lightning Will  
305 NW 21st Avenue, Portland, OR 97209

Our Emerging Professional Mixer/Ugly Sweater Contest from last year is making a comeback as our December Chapter Meeting. This is a fun and festive networking event that we are co-hosting with other

professional organizations in town. While the goal is to get as many emerging professionals in the room as possible, this event is open to anyone and everyone looking to have a good time and expand their network. [REGISTER HERE >](#)

## PRESIDENT'S MESSAGE

## President's Message

*Ellen Onstad, CSI, CDT, Board President*



One of the first things I did with CSI was meeting summaries. I find it funny that I am back there again. The November meeting topic was the future of specifications. Within the first few minutes we talked about mentors. Everyone on the panel I would consider a mentor. I could ask them all questions or ask for help or turn to them for CSI or work

assistance.

The panel consisted of two fellows, three past region presidents/directors, and four past chapter presidents. All of them have been on a CSI board of directors for at least a year, most for many more. While they have energy and knowledge and will answer any question thrown at them, what happens when they retire or get so busy they can't take on another project or decide they want to go into project management or something else? Who will take their place?

[Got News?](#)

## In this Issue

[December Chapter Meeting](#)[President's Message](#)[November Meeting Recap](#)[Industry Forum 2017](#)[2017 Sponsorship Opportunities Open](#)[Save the Date](#)[A Resilient Spirit](#)[Learning & Libations Series](#)[In Memory](#)[Members Renewed](#)[CSI Bi-Region Conference](#)[Updated Carbon Calculator](#)

## Upcoming Events

**December 13**  
[December Chapter Meeting: Holiday Mixer & Ugly Sweater Contest](#)

**2017**

In December we are taking on the next generation as the ugly sweater contest continues. These are those professionals moving up the ranks of their local firms, shadowing in larger projects, and one day taking over the world. I don't want to get into what sort of world we will leave them or how this past election changes many things. I want to look at what we can do to spread knowledge and the information about CSI.

Leadership begins at the bottom, volunteering for small tasks and working your way up to committee chair. If the group needs an infusion of new ideas, then jump with both feet! If it's not something that works, find a new committee or create a new one. We have lots of opportunities here in Portland and nationally.

It's been a crazy few months. It feels like just yesterday I was standing in front of the Chapter at the golf tournament, and shortly it will be 2017. Where does the time go? Thank you everyone for your support!

## CSI PORTLAND NEWS

### November Recap: The Future of Specifications

*Alicia Clark, CSI, CDT, Programs Chair*



A loyal group of people ventured out on election night to attend our Future of Specifications Panel, and while a lot of interesting ideas were discussed, the overwhelming consensus was that this is just the beginning of the conversation. Many of our specifiers are retiring and many young professionals don't want to be pigeon-holed into becoming the next spec writer, and with the ever growing complexity of how buildings are built, the current format for specs might not continue to be the best format for the information. Portland CSI wants to make sure we stay on the cutting edge of leading our industry, so expect to see this conversation continue and make sure to check out the video on the Portland CSI YouTube Channel. A BIG THANK YOU to our sponsors [Willamette Graystone](#) and [Versico Roofing Systems](#), and all our distinguished panelists!

### Industry Forum 2017 Welcomes Keynote Michael Rotundi



We're pleased to welcome [Michael Rotundi](#) of [RoTo Architecture](#) as the Industry Forum 2017 Keynote speaker. As with past Industry Forums, the 2017 keynote promises to be inspiring! "I like the fact that this has a practical and technical underpinning to it-I will add a poetic component to it as I describe a creative process that considers purpose, meaning and material details...as I go from straw bale to teflon construction," says Michael.

Since its founding in 1992, RoTo has envisioned and built a wide range of project types varying in scope and complexity. RoTo Architecture has exhibited an openness in spirit that has enabled them to collaborate in a genuine sense with those who commission and inhabit the architecture they facilitate.

#### What's new with Industry Forum 2017?

- New date, March 16, 2017 - Portland Art Museum
- Speed Education in Partnership with AIA Portland. Speed

**January 10, 2017**  
Chapter Meeting: Annual Economic Forecast

**February 14**  
Chapter Meeting: Grill the Developer

**March 16**  
[CSI Industry Forum 2017](#)

**April 11**  
April Chapter Meeting  
Resiliency: How to Prepare for the "Big One"

**May 9**  
May Chapter Meeting:  
Topic TBD

**June 13**  
Annual Chili Cook-Off and Awards Night

**July 11**  
Annual Architectural Scavenger Hunt

**August 24**  
[Annual Golf Tournament](#)  
Lewis River Golf Course

CSI Sponsors

[Support CSI, Learn How Here >](#)

Education is an interactive session where sponsor's provide AIA HSW educational discussions directly with IF attendees. Attendees will have a chance to visit with at least 10 sponsor's to learn what new innovated products & services are available. Speed education provides an informative link between design professionals and Industry Forum Sponsors. Adding value to the community is a hallmark of Industry Forum, and the partnership with AIA Portland and Speed Education achieves this goal. We look forward to adding this new session to IF 2017. Speed Education is available for Platinum, Gold and Silver sponsors.

### Event Schedule

3:00 to 3:30; Registration

3:30 to 5:00; Speed Education

5:00 to 6:00; 5 x 10's

6:00 to 7:15; Food & Networking

7:15 to 7:30; Introductions and door prizes

7:30 to 8:30: Keynote Presentation by Michael Rotundi.

[REGISTER HERE >](#)

Sponsorships are now open with early bird pricing until Jan 31, 2017

- Platinum \$2,250.00 (\$2,500.00 after 1/31/2107)
- Gold \$1,495.00 (\$1,600.00 after 1/31/2017)
- Silver \$995.00 (\$1,200.00 after 1/31/2017)
- Bronze \$595.00 (\$700.00 after 1/31/2017)

[SPONSOR HERE >](#)

Thank you to DeaMor, Boral, R-Stud, Pacific Architectural Products, Northwest Wall & Ceiling Bureau (NWCB) for Sponsoring Industry Forum 2017.

---

## 2017 Sponsorship Opportunities Open



Portland CSI has been recognized and rewarded for being one of the top CSI chapters in the United States. Our members number over 260 and growing. We have a wide variety of disciplines engaged in bringing the build community together under one umbrella, which is what makes sponsoring event(s) with CSI an unparalleled opportunity for your company and brand recognition.

Many companies are moving away from using traditional media to promote their brand, relying more on sponsorship and event opportunities. Please consider event marketing or sponsoring one or more of the monthly or yearly Portland CSI events. Detailed information is available [HERE >](#)

If you have questions please feel free to e-mail CSI Portland directly at our new email address [office@portlandcsi.org](mailto:office@portlandcsi.org).

---

## 2017 is Looking Gooooood!



January 10, 2017

#### Economic Forecast

Our annual Construction Economic Forecast is coming back in January. For a full understanding of the issues impacting construction please join Cliff Brewis with Dodge Data and Analytics for a breakdown of the industry and a review of the influencers impacting the various sectors and what the prediction for the next year will be.

#### February 14, 2017 - LUNCH MEETING

##### Chapter Meeting Topic TBD

We're looking into topics such as the Post Office Master Plan, Vancouver Gramor Development, OSU Cascade Campus. If you have a topic you are really interested in seeing, please email Ali LaManna at [programs@portlandcsi.org](mailto:programs@portlandcsi.org)

#### March 16, 2017

##### CSI Portland Chapter Industry Forum 2017

Industry Forum 2017, attended by hundreds of designers, engineers, contractors, product reps, and owners, provides the AEC community an annual and stimulating look at what's innovative in the industry. More details will be announced soon! Mark your calendars! Sponsorship opportunities are available now! [REGISTER HERE >](#)

#### April 11, 2017

##### Resiliency: How to prepare for the "Big One"

This panel presentation will cover a variety of topics regarding resiliency and earthquake preparedness, and how the AEC community in Portland can play a larger role.

#### May 9, 2017

##### Chapter Meeting Topic TBD

We're looking into topics such as the Post Office Master Plan, Multnomah Courthouse, and OSU Cascade Campus. If you have a topic you are really interested in seeing, please email Ali LaManna at [programs@portlandcsi.org](mailto:programs@portlandcsi.org)

#### June 13, 2017

##### CSI 5th Annual Chili Cook-Off and Awards Night

Warmer weather means more fun with Portland CSI! The Annual Chili Cook-Off is the perfect event for all you networking chili-lovers. Whether you want to join the competition as a team with your own chili recipe, or just come to judge your colleague's cooking skills and costumes, you are more than welcome. This is also our annual chance to thank all of our hardworking volunteers with the Portland Chapter Awards, and all of our members with low price tickets for a fun and festive evening.

#### July 11, 2017

##### Annual Architectural Scavenger Hunt (FREE EVENT!)

Put your thinking cap, grab the map and the clues, and come test your architectural knowledge! The summer time is also the time for our Annual Architectural Scavenger Hunt, and we are busy hunting down clues to make a fun and challenge trail for you to follow, and this year will be our first over on the eastside of the river. Brush off your sleuthing skills and save the date for July 12th. This is a free event with a hosted Happy Hour to follow, so spread the word around your office to anyone that is interested in coming to see what Portland CSI is all about!

#### August 24, 2017

##### 2017 Portland Chapter CSI Golf Tournament at Lewis River

The golf course will be calling your name soon enough, so why not put it on your calendar early? Find your golf mojo and join us for a fun-filled day in the sun and support the CSI scholarship program in the process. Prizes awarded, raffle tickets available, banquet following, and fun for



all. [REGISTER OR SPONSOR HERE >](#)

For more information and registration: [Portland.csinet.org](http://Portland.csinet.org)  
Sponsorship opportunities available! Contact [Ali LaManna](#) for more details.

## EDUCATION

### A Resilient Spirit

*Leslie Case, CSI, Publicity Committee Chair*



It seems no matter where my nomadic life takes me there is always a fault, a great big fault. Not in my personal life (although that has been known to be true) but rather under my feet, in the earth.

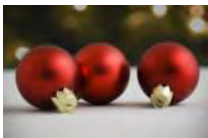
This time, it is the Cascadia Fault and from the Learning and Libations last Wednesday night I learned even more about what we can expect from the "big one". I came away that night feeling unsettled and concerned enough to put together some supplies just in case. It really got me thinking about the people who choose to live in Oregon with possible impending disaster; the teams of people that find the budgets to retro fit old buildings and create a better plan for future buildings, the hundreds of labor hours that go into planning emergency response systems, services and shelters. Everyone with their eye on having strong, effective resilience planning. It occurred to me that it is also about the people who love this state and stay in the face of danger, that's what I call a resilient spirit! Thank you to Kent Yu for an excellent presentation.

Stay tuned next year as we delve deeper into Resiliency and Preparedness in both the Learning and Libations Series and the April Chapter meeting. If you missed Kent's presentation, you can find it on our [Portland CSI YouTube Channel](#).

---

### Learning & Libations Series is Home for the Holidays

*Jake LaManna, CSI, CDT, Education Chair*



The Learning and Libations Series will be taking a brief break through the holiday season, but make sure to keep an eye out for Roofing 301 (the third part of our roofing series) to conclude in January. And even though the committee will be stuffing themselves full of turkey and other holiday treats we are all still busy planning the next year of amazing events! Thank you so much to our Series Sponsor Versico Roofing Systems for making this year's events so spectacular. We hope you all have a wonderful holiday season and we will see you in 2017!!!



## CERTIFICATION

### CDT Scholarships for Emerging Professionals

*Cherise Lakeside, CSI, CDT, Certification Chair*



Portland CSI is proud to dedicate our scholarship dollars to emerging professional CDT scholarships and existing member advanced certification scholarships. The application period is open now and will close on December 26, 2016.

I urge you to look around your office, identify emerging professionals who would benefit from achieving CDT certification and urge them to apply. Emerging professionals from any discipline or area of the built industry are welcome to apply (architecture, engineering, construction, product reps, owners, etc.).

CDT Scholarships are available to emerging professionals within the following guidelines:

1. Must be an existing CSI member or become one. (See covered costs below)
2. Must be an emerging professional with less than ten years experience in your field (this scholarship is not based on age, it is based on years of experience).
3. Must make a one-year commitment to a Portland CSI committee of your choice.

The scholarship includes the following:

1. Membership fees (if needed) after the first \$100.
2. Cost of Portland Chapter CDT class
3. Cost of Project Delivery Practice Guide and Study Workbook
4. Exam cost reimbursed upon passing (Early Registration Rate)

This scholarship has an approximate dollar value of \$800. Total cost to winners is \$100 (your portion of membership if you are not already a member) provided you pass the exam.

To apply, please send an email with the following information:

- Your name
- Your mailing address, city, state, zip
- Your contact phone number and email
- Your company
- Your discipline
- A brief statement stating why you are interested in becoming CDT certified

Scholarship recipients will be notified of award by December 31st. Applications and questions should be sent to Cherise Lakeside, [cheriselakeside@gmail.com](mailto:cheriselakeside@gmail.com).

## MEMBERSHIP

### In Memory

*Lee Kilbourn, FCSI, Membership Chair*



The Willamette Valley Chapter CSI family received sad news recently.

**Benny Bartel**, one of the chapter's earliest members, passed away peacefully last month. Benny saw and enjoyed much over his almost century-long time on this earth. We will forever remember him for his noteworthy contributions to many significant projects in the Eugene-Springfield area. He made his mark in life; his legacy will remain with us for many years.

**Morgan Deines** leaves us at far too young an age, the tragic victim of a

senseless crime. Morgan's dad, Tom, FCSI, CCCA, is a Construction Specifications Institute stalwart: past Institute Vice-President, past Northwest Region Director, and perennial member of the Institute's Technical Committee. We mourn along with Tom, Tom's wife Trixie, Morgan's mother Sirkka, and all of Morgan's other family and friends. Words alone cannot adequately express our sorrow and condolences."

### Jerry McDonnell

Published obituaries for Benny, Morgan, and Jerry, which paint a picture of their lives for those who may not have enjoyed the honor of knowing them, may be found at a blog published for the SouthWest Oregon Chapter of the American Institute of Architects by Randy Nishimura, AIA, CSI, CCS. [READ MORE >](#)

---

## Update Your Contacts

*Leslie Case, CSI, Publicity Chair*

In an effort to keep up with the ever-present changes in technology, the Chapter has change our general email address, and added a few more. Please add the following new Portland CSI email addresses to your contacts.

office@portlandcsi.org  
webmaster@portlandcsi.org  
membership@portlandcsi.org  
programs@portlandcsi.org  
industryforum@portlandcsi.org

We will, also be reaching out to our CSI members during month of December to ensure we have updated contact information for each of you. If you have new contact information please provide updated info to [membership@portlandcsi.org](mailto:membership@portlandcsi.org) and look for an email in your inbox arriving this week.

---

## Membership

*Lee Kilbourn, FCSI, Membership Chair*

Renewed Members August 2016

- Dean Aldrich, Esq., CSI; The Aldrich Law Office ; member since 1996
- Bryon Allen, CSI; W.R. Meadows; member since 2008
- Mark Atteridge, CSI; Deamor; member since 2007
- Mark Booth, CSI, CDT; ZGF Architects LLP; member since 1991
- Jerry Davis, CSI, CDT, AHC, DHI; Allegion; member since 1986
- Jeff Dellis, CSI; Klein Architecture& Engineering, Inc.; member since 2016 - **NEW**
- Ken Dzioba, CSI, CDT; GCP Applied Technologies; member since 1996
- Jasmine Ezat-Agha, CSI-EP; Oh Planning + Design, Architecture; member since 2016 - **NEW**
- Anthony Fennig, CSI; PKA Architects ; member since 1993
- Angela Frye, CSI; PPG Industries; member since 2014
- Bud Henson, CSI; Window Tech Inc.; member since 1997
- Andre Kenstowicz, CSI-EP; PPG; member since 2016 - **NEW**
- John Killin, CSI; NW Wall and Ceiling Bureau; member since 2013
- James LaManna Jr., BA, CSI-EP, CDT, M. Arch; Walsh Construction Company; member since 2013
- Erica Lange, CSI, CDT; CertainTeed; member since 2015
- Dennet Latham, RA, CSI, CCS, AIA, LEED AP, M. Arch; ; member since 1980
- Phil Madden, CSI, AIA, LEED AP, NCARB; Mead & Hunt; member since 2016 - **NEW**
- Michael Madias, CSI, CDT; Architect; member since 1990
- William Pelke, CSI, AIA, CSC; Covestro; member since 2004

- George Volker, CSI; Pella; member since 2016 - *NEW*
- Eric Watson, CSI; Miller Consulting Engineers, Inc. ; member since 2003
- Alex Wuebben, CSI-EP; Swinerton; member since 2016 - *NEW*

Members Emeritus with anniversary date in August:

- Inge Annelise Carstanjen, CSI, Member Emeritus, CDT; 1983
- Richard Hurley, CSI, Member Emeritus, CDT; 1988
- Richard Gessford, CSI, Member Emeritus, CDT, AIA; 1993

## CSI REGIONAL NEWS

### Save the Date



When: May 18-20, 2017  
Location: Seattle, Washington  
Hotel: Sheraton-Seattle

AIA Educational Sessions to include the following:

1. Revit
2. Construction Management
3. Material Sciences
4. Concrete and hands on demonstrations
5. Estimators
6. NW Day and Sustainability

As well as manufacturer trade shows and tours. More information to follow!

## INDUSTRY NEWS

### It's Here: Updated Carbon Calculator



WoodWorks recently launched an updated version of its free carbon calculator, providing more options for buildings made from CLT and other mass timber products. See the full release with additional details on how to use the carbon calculator as well as the figures it estimates below.

[LEARN MORE >](#)

For questions, please contact Alexandra Wilson at 206-686-6434.

*CSI's mission is to advance building information management and education of project teams to improve facility performance. We are the only organization that brings together all the players in the built industry.*