



# The Predicator

## IN THE SPOTLIGHT

### January Chapter Meeting: 2015 Construction Forecast

*Alicia Clark, CSI-EP, CDT, Chapter Director, Programs Chair*



January 13, 2015, 5:30-8:30 PM

DoubleTree Lloyd Center

1000 NE Multnomah, Portland, OR

Speaker: Cliff Brewis, Dodge Data & Analytics

[REGISTER HERE >](#)

The new year is upon us. What will the economic environment look like moving into 2015, and how will that effect the construction outlook? Will the construction expansion be able to continue in 2015?

This presentation will examine the various factors affecting construction, such as emerging economic and legislative developments, in assessing the 2015 prospects for major sectors of the construction industry.

## PRESIDENT'S MESSAGE

### President's Message

*Cherise Schacter, CSI, CDT, Chapter President*



Helloooooo 2015! Portland CSI is really excited about all the great things we have planned for 2015.

Ali Clark and the Programs Committee are hard at work scheduling all kinds of great chapter meetings and events. Jake LaManna and the Education

Committee are continuing our value added education series into the New Year (seriously, where else can you get beer, pizza and education for \$10). These education sessions are open to members and non-members alike for the same cost.

[READ MORE >](#)

## CSI PORTLAND EVENTS

### December Chapter Meeting and Toy Drive Recap



JOIN OUR MAILING LIST

SUBMIT NEWS

#### In this Issue

[December Chapter Meeting](#)

[President's Message](#)

[President's Message](#)

[Save the Dates](#)

[Specifier's Share Group](#)

[Lecture Series](#)

[Are you a Kraken?](#)

[Seeking Publicity Chair](#)

[Time to be Grateful](#)

[Get Social](#)

[New & Renewed Members](#)

[New & Renewed Members](#)

[Region Chapter Contacts](#)

[New & Renewed Members](#)

[New & Renewed Members](#)

[New & Renewed Members](#)

[Professional Organizations](#)



### Washington High School Tour and Holiday Social

Do you ever wish you could go back to middle school? The December Portland Chapter CSI program did just that. Washington High School (which was reused for a middle school in the 1980's) is currently being remodeled into office / retail / flex space. The fourth floor is being remodeled into Corporate offices for New Seasons Market. The classrooms (with chalkboards still on walls - cleaned and ready to use) will become smaller office space for individual companies. The auditorium is being upgraded to a theater space. The roof has also become its own community gathering space. They say you can't go back to school - but you can remodel the space and have your office there when you grow up!



### Annual Community Giving: Toy Drive for Randall's Childrens Hospital

So far the toy drive has collected 122 toys plus \$125. Thank you to everyone that has donated a toy at our last few meetings. This will put a huge smile on all the faces at the Randall's Children Hospital.

If you have forgotten to bring a toy or would like to donate another one, we will continue to collect them through the end of the month. Toys or monetary donations can be dropped off at Precision Images Attn: Erica Bitterman-Ryon at either of their locations: 900 SE Sandy Blvd or 1123 SW Washington.

## Save the Dates: Upcoming Chapter Meetings

Alicia Clark, CSI, CDT, Chapter Director, Programs Chair



### February Chapter Meeting - Grill the Product Rep

Tuesday, February 10, 2015

DoubleTree Lloyd Center

Moderator: Robert Hoffman, AIA, Executive Vice

President/CEO of [AIA Portland Chapter](#)

Panelists: Brian Kiel, Sherwin Williams Paint; Chris Bennett, Husqvarna; Robert Simmons, RW Simmons & Associates; Cherie McNabb, Forbo Floors; Georgia Spencer, PacMat

[LEARN MORE >](#)



### March Chapter Meeting - Designing for the Post Carbon Economy

Tuesday, March 10, 2015

The Sentinel (formerly The Governor Hotel)

Presenter: Eric Corey Free, Vice President of Global Outreach, [International Living Future Institute](#)

The next generation of buildings can't simply continue trying to be "less bad" or make us feel guilty for our lifestyles. What is needed are living, regenerative buildings that do no harm and repair the damage we've done. In this talk we will explore new models for how to transform our buildings into living habitats. [LEARN MORE >](#)

**April Chapter Meeting - The Future of the Lloyd Center District**

## Upcoming Events

### JANUARY 2015

#### January 6, 2015

[Managing Complex Public Capital Bond Projects](#)

#### January 8, 2015

[Specifier Share Group Electronic Project Management Tools](#)

#### January 13, 2015

[January Chapter Meeting 2015 Dodge Construction Outlook Lloyd Center DoubleTree](#)

#### January 20, 2015

[CSI Lecture Series Specs: Basic Concepts & Typical Conflicts for the Uninitiated](#)

#### January 21, 2015

[Educational Lighting: New Lighting Solutions](#)

#### January 30, 2015

Last chance to donate to CSI Toy Drive

### FEBRUARY 2015

#### February 10, 2015

[February Chapter Meeting Grill the Product Rep Lloyd Center DoubleTree](#)

### LATER

#### March 10, 2015

[March Chapter Meeting Designing for the Post Carbon Economy The Sentinel](#)

#### April 14, 2015

[April Chapter Meeting: The Future of the Lloyd Center District](#)

Tuesday, April 14, 2015

DoubleTree Lloyd Center

The Lloyd district is experiencing a huge increase in construction and revitalization. We are currently putting a panel together to discuss some of the most visible projects happening right now in the district. Stay tuned for more details to come...

---

## Specifier's Share Group: Electronic Project Management

*Corey Morris, AIA, CSI, CDT, Chapter Secretary, Share Group Chair*

Thursday, January 8, 2015 from 12:00-1:00 PM

Hennebery Eddy Architects

921 SW Washington Street, Suite 250, Portland, OR

Ian Conley from [J E Dunn](#) will join us to discuss:

- Benefits and disadvantages of software tools for project management
- What are contractors in Portland (or elsewhere) using for project management software?
- What are architects using, if anything?
- Is anyone specifying project management software be used on projects?

[REGISTER HERE >](#)

### EDUCATION

## Lecture Series Specs: Basic Concepts & Typical Conflicts for the Uninitiated

*Jake LaManna, CSI, Chapter Director, Education Chair*

January 20, 2015 from 5:30-7:30 PM

Ideate, Inc.

805 SW Broadway, Suite 2280, Portland, OR

Presenter: Cherise Schacter, Standards Coordinator, Interface Engineering

This course will cover some of the basic principles of specification organization, language, procedures, general requirements, roles and responsibilities. This course is appropriate for any member of the AEC industry (Architect, Engineer, Contractor, Product Representative, Owner, etc.) who would like a better understanding of specifications and their role in the project delivery process as well as basic procedures to avoid conflicts. [REGISTER HERE >](#)

Please contact Jake LaManna at [jake.lamanna@ohpd.net](mailto:jake.lamanna@ohpd.net) for further information on these education sessions or if you have an education session suggestion.

### KRAKEN

## Are you a Kraken?

*Cherise Schacter, CSI, CDT, Chapter President*

**April 16-18, 2015**

CSI Academies

San Francisco, CA

**May 12, 2015**

CSI Portland Industry

Forum 2015

Portland Art Museum

**May 13-16, 2015**

Tri-Region

Conference

San Diego, CA

**May 18-22, 2016**

Bi-Region Conference

Lake Tahoe

**August 27, 2015**

[CSI Annual Golf](#)

[Tournament](#)

Lewis River Golf

Course

---



You should be! The CSI Kraken Committee is a group of dedicated, positive, forward thinking members with a "go big or go home" attitude. The only requirements to call yourself a CSI Kraken is a willingness to adopt this attitude and help take our chapter to the next level. No meetings, no dues - just a willingness to pitch in, think outside the box and help make it happen. Contact me for more information.

---

## Seeking Publicity Chair

*Cherise Schacter, CSI, CDT, Chapter President*



One of the things that makes Portland CSI such a large, vibrant and active chapter are the wonderful, long term, quality leaders that bring it to the table month after month. The longevity of our leaders speaks to the quality of the people that make up our organization. Let's face it; it is all about the people. Good people don't stick around in boring, stale organizations.

We need you! We have many ways you can get involved. From big jobs to small ones, we would love to have your expertise as a contribution to our chapter. Fresh eyes and new ideas are welcome.

We are currently seeking a person to Chair our Publicity Committee. If you have a knack for marketing, online activity and a creative side, please consider getting involved. Please e-mail me for more information at [cheriseschacter@gmail.com](mailto:cheriseschacter@gmail.com).

---

## Thank you 2014 Event Sponsors

*Cherise Schacter, CSI, CDT, Chapter President*

CSI Portland would like to extend a special thank you to all of our 2014 event sponsors. Your generosity helps us to continue planning amazing chapter meetings month after month. Please take a moment to thank our generous sponsors for their dedication and support of the Portland Chapter of CSI.



If you are interested in sponsoring some of our programs coming up in 2015, please see our 2015 sponsorship levels or contact Alicia Clark at [alic@emerick.com](mailto:alic@emerick.com).

---

### SOCIAL MEDIA

## Get Social



CSI Members in Portland, across the country and beyond are sharing information on LinkedIn Discussion Groups, Twitter and blogs that are full of great information. We encourage you to connect with these professionals and expand your network. We learn something new from them each and every day.

Featured blogs this month:

[Manufacturer's Specifications Don't Follow CSI's Practice Guide: Why are you surprised?](#) by Sheldon Wolfe, FCSI, CCS

[DOWNLOAD A FULL LIST OF SOCIAL RESOURCES HERE >](#)

## MEMBERSHIP

### New & Renewed Members

*Lee Kilbourn, FAIA, FCSI, CCS, Membership Chair*

The Institute has been doing an update and overhaul to their website. At this printing, updated membership data is not available. We will publish missed information in the next newsletter.

## CSI NATIONAL NEWS

### Tri Region Conference Early Bird Rate Deadline Fast Approaching

May 13-16, 2015 - San Diego, CA

If you attended the NW Region Conference in Portland last May, then you know how much fun the Northwest region has when it gets together. This year we have the unique opportunity to join the West and the Southwest regions in a three-day conference "Coming Together to build a Better 2015".

Leadership tracks, AIA/CEU credits, specification tracks and product rep tracks are in development now. Put this on your calendar now - this is an event you won't want to miss! Early Bird Registration ends February 14, 2015.

## Institute and Region Chapters

[CSI National](#)

[CSI Northwest Region](#)

<b>Chapter Name</b>	<b>Contact</b>	<b>Phone</b>	<b>Monthly Meetings</b>
<a href="#">Big Sky</a>	Jan O'Brien	406-245-6363	Last Tuesday

<u>Capital</u>	Chris Veit	503-390-0291	Third Thursday
<u>Cook Inlet</u>	Mark Hughes	907-267-5163	Third Tuesday
<u>Idaho</u>	Karen Morris	208-343-3620	Third Tuesday
<u>Mt. Rainier</u>	Bob Kenworthy	253-931-4904	First Thursday
<u>Puget Sound</u>	Andrew Estep	206-382-3393	Second Thursday
<u>Spokane</u>	Georgia Spencer	509-328-2771	Second Thursday
<u>Willamette Valley</u>	Alorie Mayer	541-485-0922	Last Thursday

## INDUSTRY NEWS

### Educational Lighting: New Lighting Solutions

January 21, 2015 from 11:30 AM to 1:30 PM

Presented by IES, The Lighting Authority

IES will honor member rates for CSI members for this event.

[LEARN MORE HERE >](#)

### Managing Complex Public Capital Bond Projects

The Professional Engineers of Oregon, Columbia Chapter will host a panel discussion on Managing Complex Public Capital Bond Projects. The panelists include Jim Owens, executive director of the Office of School Modernization of Portland Public Schools who is managing the PPS bond program, David Etchart, Administrator for Facilities Development overseeing the Beaverton School bond program and Adam Stewart, Chief Financial Officer, Hillsboro School District.

The panel discussion will take place on January 6, 2015 at the MODA Center in Portland. We will have an opportunity to hear from the leaders on how they are delivering these major public improvement programs for Oregonians. Registration is from 6 - 6:30 pm, social hour and dinner from 6:30 pm to 7:30 pm with the presentation to follow.

[LEARN MORE >](#)

### CANstruction 2015: Call for Entries



It's that time--time to sign up for the 19th annual design and build competition to benefit the Oregon Food Bank. Design and build structures made entirely from canned foods as a creative fundraising and team building opportunity for the A/E/C community. Entry fees are \$250. [LEARN MORE >](#)

## Professional Organizations

Construction Specifications Canada (CSC)  
Construction Specifications Institute (CSI)  
Specifications Consultants in Independent Practice (SCIP)

---

## Allied Organizations

Got an addition to the list? Send it to [portlandcsi@gmail.com](mailto:portlandcsi@gmail.com).

### Design

American Institute of Architects - Portland (AIA)  
American Society of Interior Designers (ASID)  
Cascadia Region Green Building Council (GBC)  
National Association of Office and Industrial Properties - Oregon (NAIOP)  
Society for Marketing Professional Services - Oregon (SMPS)  
Architectural Foundation of Oregon (AFO)

### Technical

American Society of Mechanical Engineers - Oregon (ASME)  
American Society of Plumbing Engineers - Portland Chapter  
Building Owners and Managers Association International - Oregon (BOMA)  
International Facilities Management Association - Oregon & SW Washington Chapter (IFMA)  
Portland Building Enclosure Council (BEC)

### Construction

Associated General Contractors - Oregon-Columbia Chapter (AGC)  
Construction Management Association of America - Oregon (CMAA)  
Design-Build Institute of America - Northwest Region (DBIA)  
Home Builders Association of Metropolitan Portland (HBA)  
Oregon Remodelers Association (ORA)  
National Women in Construction - Portland Chapter #54 (NAWIC)



# The Predicator

## IN THE SPOTLIGHT

### February Chapter Meeting: Grill the Product Rep

*Alicia Clark, CSI-EP, CDT, Chapter Director, Programs Chair*



Tuesday, February 10, 2015  
DoubleTree Lloyd Center

It may be cold outside, but Portland CSI likes to turn up the heat... So watch out Product Reps. You know them as those pesky people that keep calling, or that trusted advisor helping you with your spec, or maybe they are just the people that show up with delicious food. This is your chance to ask direct questions to a panel of distinguished product representatives moderated by Robert Hoffman, AIA Executive Director.

#### Panelists

Brian Kiel, Sherwin Williams Paint;  
Robert Simmons, RW Simmons & Associates;  
Cherie McNabb, Forbo Floors;  
Georgia Spencer, PacMat

[LEARN MORE >](#)

### In Search of Good Fellows

*Richard Heiserman, AIA, FCSI, CCCA  
2015 CSI Jury of Fellows*



As a member of the Jury of Fellows, we are encouraging Chapter Leaders to consider members worthy of Fellowship in CSI to prepare the documentation of those individuals for consideration. The deadline for the Dossier and Endorsement Letters is: May 1st, 5 PM EST. All documentation must be submitted to the Institute electronically. [DOWNLOAD INFORMATION HERE >](#)

## PRESIDENT'S MESSAGE

### President's Message

*Cherise Schacter, CSI, CDT, Chapter President*



JOIN OUR  
MAILING LIST

SUBMIT NEWS

#### In this Issue

[February Chapter Meeting](#)

[In Search of Good Fellows](#)

[President's Message](#)

[Save the Dates](#)

[Lecture Series](#)

[Scholarship Winners](#)

[Spring Exam Update](#)

[Got a Lust for Learning](#)

[Are you a Kraken?](#)

[Seeking Publicity Chair](#)

[Pay it Forward](#)

[Get Social](#)

[New & Renewed Members](#)

[CSI Academies](#)

[Upcoming CSI Conferences](#)

[Region Chapter Contacts](#)

[2015 Technical Products Showcase](#)





It's no secret to anyone who knows me that my passion is improving communication and coordination between all disciplines in order to provide better projects with less error, omissions and conflict.

An unfortunate reality in this business is that very few AEC professionals get any project delivery, contract administration or specifications training during their schooling. An even more unfortunate reality is that first education typically happens as a result of a conflict on a project.

The burning need to get more of this education out there was apparent by our sold out Specs 101 Class in January and the feedback received after. Industry professionals need and want this education but don't always know where to get it. CSI is the place! [READ MORE >](#)

## CSI PORTLAND EVENTS



## Industry Forum 2015

*Corey Morris CSI, Chapter Secretary, Share Group Chair*

Plans for the 2015 Industry Forum - Art by Design - on May 12, 2015 are well underway! We are pleased to offer you this opportunity to be one of the first to join as a Platinum Sponsor! Our venue and track record of quality attendees make this the construction industry event of the year you do not want to miss!

### Keynote Announced

Our keynote, OMA (Office for Metropolitan Architecture) is an architecture firm based in Rotterdam, founded in 1975 by Dutch architect Rem Koolhaas and Greek architect Elia Zenghelis. The firm has completed housing, institutional, commercial and civic work around the globe. Recent notable (and recognizable) projects include the Seattle Central Library, Central China Television Headquarters in Beijing, and the Musee National des Beaux-Arts in Quebec.

### Event Schedule

- 4:00 PM Registration
- 4:30 PM 6 x 10 Presentations (six 10-minute presentations on emerging industry topics)
- 5:30 PM Vendor booths open
- 7:00 PM Keynote Presentation

### Sponsorship Opportunities

- **Platinum Sponsorship:** \$2,250 (before February 28th) you can enjoy the benefits of a Platinum Sponsorship: 30 event tickets for your guests (value \$25 each), sixty-second spotlight on your firm at the Forum, your logo on event materials, including a poster that will be distributed prior to the event, personal meeting with our keynote speaker for you and two guests - an opportunity to build relationships for future partnering opportunities, and many more.
- **Gold Exhibitor:** \$1,375 (before February 28): 20 event tickets for your guests (value \$25 each), your logo on all email advertising, select exhibit location at Industry Forum, your logo

[MatriArchs](#)

[Professional Organizations](#)

[Allied Organizations](#)

## Upcoming Events

### FEBRUARY

**February 10**  
[February Chapter Meeting Grill the Product Rep](#)  
 Lloyd Center  
 DoubleTree

**February 12**  
[CSI Share Group: Fire Stop Systems](#)

**February 12**  
[CSI CDT Classes begin](#)

**February 17**  
[Lecture Series: AIA A201 Introduction to Roles & Responsibilities within the General Conditions](#)

**February 17**  
[ASPE Program: Portland At Fault, A Seismic overview of our region - and the Pacific Rim](#)

**February 28**  
[Early bird discount for Industry Forum sponsorship ends](#)

### MARCH

**March 10**  
[March Chapter Meeting Designing for the Post Carbon Economy](#)  
 The Sentinel

**March 30**  
 CSI spring exams begin

### LATER

**April 14**

on a banner at the event, your logo prominently displayed on-screen during event introductions, and six months advertising on the Chapter website

- **Silver Exhibitor:** \$950 (before February 28): Five event tickets for your guests (value \$25 each), your logo on all email advertising, your logo prominently displayed on-screen during event introductions, and a great exhibit location

The Industry Forum is an annual educational and networking event, and this seventh annual Industry Forum promises the architects, designers, contractors, product representatives, fabricators and building owners together in a social event, featuring a keynote speaker and the "6x10", six ten-minute presentations by students and professionals on innovation in the building construction industry.

[REGISTER HERE >](#)

## Share Group: Firestopping Systems

*Corey Morris CSI, Chapter Secretary, Share Group Chair*



Thursday February 12, 2015 from 12:00 PM to 1:00 PM PST

Geoffrey Miller, Fortis Construction, and Bob Hasting, Specialty Firestop Systems, will share new products, trends and tricks of the trade related to firestopping. Lunch will be provided if you RSVP! Join us and share your experiences. [RSVP HERE >](#)

## Save the Dates: Upcoming Chapter Meetings & Events

*Alicia Clark, CSI-EP, CDT, Chapter Director, Programs Chair*



### March Chapter Meeting - Designing for the Post Carbon Economy

Tuesday, March 10, 2015

The Sentinel (formerly The Governor Hotel)

Presenter: Eric Corey Free, Vice President of Global Outreach, [International Living Future Institute](#)

The next generation of buildings can't simply continue trying to be "less bad" or make us feel guilty for our lifestyles. What is needed are living, regenerative buildings that do no harm and repair the damage we've done. In this talk we will explore new models for how to transform our buildings into living habitats. [LEARN MORE >](#)



### April Chapter Meeting - The Future of the Lloyd Center District

Tuesday, April 14, 2015

DoubleTree Lloyd Center

The Lloyd district is experiencing a huge increase in construction and revitalization. We are currently putting a panel together to discuss some of the most visible projects happening right now in the district. Stay tuned for more details to come.



### Industry Forum 2015: Art by Design with OMA

May 12, 2015 from 4-9 PM

Location: Portland Art Museum

[LEARN MORE HERE >](#)

[DOWNLOAD FLYER HERE >](#)

April Chapter Meeting: The Future of the Lloyd Center District  
DoubleTree Lloyd

### April 16-18

CSI Academies  
San Francisco, CA

### April 21

Lecture Series:  
Understanding Roof Assemblies

### May 1

CSI Fellowship endorsement letters deadline

### May 12

[CSI Portland Industry Forum 2015](#)  
Portland Art Museum

### May 13-16

Tri-Region Conference  
San Diego, CA

### August 27

[CSI Annual Golf Tournament](#)  
Lewis River Golf Course

### 2016

### May 18-22

Bi-Region Conference  
Lake Tahoe



## Annual Golf Tournament

August 27, 2015

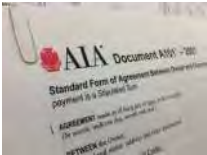
Lewis River Golf Course

[DOWNLOAD REGISTRATION FORM >](#)

## EDUCATION

### Lecture Series:

*Jake LaManna, CSI, Chapter Director, Education Chair*



**AIA A201 Introduction to Roles & Responsibilities within the**

#### **General Conditions**

February 17, 2015 from 5:30-7:30 PM

Presenter: Rick Heiserman, AIA, FCSI, CCCA, Senior Associate, Ankrom Moisan Architects and Jody Moore, AIA, CDT, Vice President, DeaMor Associates

The AIA A201 class is designed for the CDT student, but really applies to everyone in the construction industry. The session will introduce and use the AIA A201 as a review aid to understand the similarities and differences between the different standard general conditions from the AGC, EJCDC and AIA. We will review all of the articles within the A201 General conditions in particular. There will be discussion on the roles and responsibilities of all parties in regards to the A201.

[REGISTER HERE >](#)

#### **Understanding Roofing & Assemblies**

April 21, 2015 5:30-7:30 PM

Location: Walsh Construction

2905 SW First Avenue, Portland, OR 97201

As one of the most critical enclosure components, the roof assembly is often one of the least understood. With so many system options and insulation strategies to choose from, it can be difficult to make the right decision for your project. Please join us for a panel discussion featuring local industry roofing experts, who will address common questions about roofing including:

- How do I know if I need a Class A roof- and what does that mean?
- what's the deal with vapor barriers- do I really need one?
- are vented low slope roofs acceptable in our climate?
- what options do I have for insulating roof assemblies?
- are white roofs really a good solution for our climate?

As with life, there are no dumb questions, so bring your burning questions and a hearty appetite. Refreshments and pizza will be served during the networking time prior to the moderated panel discussion.

Please contact Jake LaManna at [jake.lamanna@ohpd.net](mailto:jake.lamanna@ohpd.net) for further information on these education sessions or if you have an education session suggestion.

## CERTIFICATION

### Scholarship Winners Announced



We are proud to announce the six recipients for our CDT Scholarship and the winner of our Advanced Certification scholarship.

Each of the following emerging professionals will receive CSI membership for a year, the *Project Delivery & Practice Guide* book, the *CDT Study Workbook*, classes with experienced instructors and the cost of the exam, all for the cost of \$100 (towards membership).

#### **CDT Scholarship Winners**

Doug Beens, Interface Engineering  
Geoff Jenks, Interface Engineering  
Jeffrey Glanville, Interface Engineering  
Jessica Kaplan, Interface Engineering  
Thaniel Davis, DeaMor Associates  
Kristin Glanville, Interface Engineering

#### **Advanced Certificate Winner**

Alexander Lungershausen, Hennebery Eddy

Congratulations to all of you!

---

## Spring Exam Registration Update

Kathy Hempel, CSI, CCCA, Chapter Director, Certification Chair



CSI's National website has been updated with the spring exam information. Here is the update we just received from Joy Davis, the Web Director.

*Registration for the spring 2015 CSI*

*Certificate/Certification Exams is now open. The new registration deadline and extended exam window are:*

*Registration deadline: March 13, 2015*

*Exam window: March 30, 2015 - May 9, 2015*

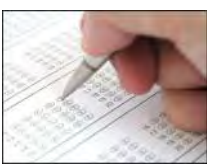
*By opening registration now and extending the exam window, CSI is allowing candidates the 8-12 weeks of study CSI's Strategic and Maintenance Certification Committees recommend. To keep registration easy during this truncated registration window, CSI will have only one registration deadline, and candidates will pay only the early registration exam fee. There will be no "final registration deadline" or associated higher price.*

*I apologize for the frustration and inconvenience this delay has caused your chapter and the candidates you are supporting. Thank you for all your effort to help members and potential members prepare for exams and become the experts that lead our industry.*

---

## Got a Lust for Learning?

Kathy Hempel, CSI, CCCA, Chapter Director, Certification Chair



Did you know that you don't have to be a member of The Construction Specifications Institute to take the CDT exam or classes? You can earn AIA CES and CSI CEN learning units while furthering your knowledge on the construction process.

The CDT exam (Construction Documents Technologist) Educations Program teaches a thorough overview of the design and construction process. It promotes an understanding of contractual agreements, roles, responsibilities, drawings and specifications, and construction delivery systems and how to consistently develop organized, effective construction documents.

Registration is open for our classes that start on February 12th at Ankrom Moisan Architects. [REGISTER HERE >](#)

Please contact Kathy Hempel at [kathy@deamor.com](mailto:kathy@deamor.com) or Katie Kniestadt [KatieK@gbdachitects.com](mailto:KatieK@gbdachitects.com) with any questions about obtaining CSI Certifications.

## KRAKEN

### Are you a Kraken?

*Cherise Schacter, CSI, CDT, Chapter President*



You should be! The CSI Kraken Committee is a group of dedicated, positive, forward thinking members with a "go big or go home" attitude. The only requirements to call yourself a CSI Kraken is a willingness to adopt this attitude and help take our chapter to the next level. No meetings, no dues - just a willingness to pitch in, think outside the box and help make it happen. Contact me for more information.

### Seeking Publicity Chair

*Cherise Schacter, CSI, CDT, Chapter President*



One of the things that makes Portland CSI such a large, vibrant and active chapter are the wonderful, long term, quality leaders that bring it to the table month after month. The longevity of our leaders speaks to the quality of the people that make up our organization. Let's face it; it is all about the people. Good people don't stick around in boring, stale organizations.

We need you! We have many ways you can get involved. From big jobs to small ones, we would love to have your expertise as a contribution to our chapter. Fresh eyes and new ideas are welcome.

We are currently seeking a person to Chair our Publicity Committee. If you have a knack for marketing, online activity and a creative side, please consider getting involved. Please e-mail me for more information at [cheriseschacter@gmail.com](mailto:cheriseschacter@gmail.com).

### Kraken Rule #19 Pay it Forward

*Cherise Schacter, CSI, CDT, Chapter President*



CSI Portland would like to say thank you to Cliff Brewis of Dodge Data & Analytics for flying all the way across the country to share his expertise and insight into our national and local construction economic forecast for 2015. Your time and effort is very much appreciated. The presentation was excellent!

If you are interested in sponsoring some of our amazing programs coming up in 2015, please contact Alicia Clark at [alic@emerick.com](mailto:alic@emerick.com).

## SOCIAL MEDIA

### Get Social



CSI Members in Portland, across the country and beyond are sharing information on LinkedIn Discussion Groups, Twitter and blogs that are full of great information. We encourage you to connect with these professionals and expand your network. We learn something new from them each and every day.

Featured blogs this month:

[Rules of Thumb](#) by Sheldon Wolfe, FCSI, CCS

[Brush up your Resume](#) by Sheldon Wolfe, FCSI, CCS

[DOWNLOAD A FULL LIST OF SOCIAL RESOURCES HERE >](#)

## MEMBERSHIP

### New & Renewed Members

*Lee Kilbourn, FAIA, FCSI, CCS, Membership Chair*

The Institute has been doing an update and overhaul to their website. At this time, updated membership data is not available. We will publish missed information in the upcoming newsletters.

## CSI NATIONAL NEWS

### CSI Academies



April 16-18, 2015

San Francisco, CA

[REGISTER HERE >](#)

Sponsorship packages are now available for this event attended by experienced specifiers, contract administrators and product reps from all over the country. [DOWNLOAD INFO HERE >](#)

## Construct 2015



CSI CONSTRUCT will be held in St Louis, Mo from

September 30 to October 3rd, 2015. If last year was

any indication, this will be a wonderful week of networking, education,

sightseeing and laughing along with catching up with old and new friends. For a review of the events of this year may I suggest going on twitter and searching for #CONSTRUCT or #CSINIGHTOUT

---

## Upcoming CSI Conferences



### Tri Region Conference

May 13-16, 2015 - San Diego, CA

If you attended the NW Region Conference in Portland last May, then you know how much fun the Northwest region has when it gets together. This year we have the unique opportunity to join the West and the Southwest regions in a three-day conference "Coming Together to build a Better 2015".

Leadership tracks, AIA/CEU credits, specification tracks and product rep tracks are in development now. Put this on your calendar now - this is an event you won't want to miss! Early Bird Registration ends February 14, 2015.



### Bi Region Conference

Early Planning is underway for the Bi-Region Conference May 18-22nd, 2016 in Lake Tahoe. If you are interested in helping out please let one of your region leaders know.

---

## Institute and Region Chapters

[CSI National](#)

[CSI Northwest Region](#)

<b>Chapter Name</b>	<b>Contact</b>	<b>Phone</b>	<b>Monthly Meetings</b>
<a href="#"><u>Big Sky</u></a>	Jan O'Brien	406-245-6363	Last Tuesday
<a href="#"><u>Capital</u></a>	Chris Veit	503-390-0291	Third Thursday
<a href="#"><u>Cook Inlet</u></a>	Mark Hughes	907-267-5163	Third Tuesday
<a href="#"><u>Idaho</u></a>	Karen Morris	208-343-3620	Third Tuesday
<a href="#"><u>Mt. Rainier</u></a>	Bob Kenworthy	253-931-4904	First Thursday
<a href="#"><u>Puget Sound</u></a>	Andrew Estep	206-382-3393	Second Thursday
<a href="#"><u>Spokane</u></a>	Georgia Spencer	509-328-2771	Second Thursday
<a href="#"><u>Willamette Valley</u></a>	Alorie Mayer	541-485-0922	Last Thursday

# ASPE: 2015 Technical Products Showcase

February 11, 2015 4-7 PM

Location: NW Natural

220 NW Second Avenue, Portland, OR 97209

[DOWNLOAD FLYER HERE >](#)

---

## MatriArchs: Pioneering Women Architects in Oregon

Exhibit documenting the lives and careers of thirteen of the first women to practice architecture in Oregon.  
Portland State University, Shattuck Hall 235

Opening Reception, February 5th, 5pm to 6pm  
Lecture by Alison B. Hirsch 6pm  
Exhibit open February 5th through 26th

---

## Professional Organizations

[Construction Specifications Canada \(CSC\)](#)  
[Construction Specifications Institute \(CSI\)](#)  
[Specifications Consultants in Independent Practice \(SCIP\)](#)

---

## Allied Organizations

Got an addition to the list? Send it to [portlandcsi@gmail.com](mailto:portlandcsi@gmail.com).

### Design

[American Institute of Architects - Portland \(AIA\)](#)  
[American Society of Interior Designers \(ASID\)](#)  
[Cascadia Region Green Building Council \(GBC\)](#)  
[National Association of Office and Industrial Properties - Oregon \(NAIOP\)](#)  
[Society for Marketing Professional Services - Oregon \(SMPS\)](#)  
[Architectural Foundation of Oregon \(AFO\)](#)

### Technical

[American Society of Mechanical Engineers - Oregon \(ASME\)](#)  
[American Society of Plumbing Engineers - Portland Chapter](#)  
[Building Owners and Managers Association International - Oregon \(BOMA\)](#)  
[International Facilities Management Association - Oregon & SW Washington Chapter \(IFMA\)](#)  
[Portland Building Enclosure Council \(BEC\)](#)

### Construction

[Associated General Contractors - Oregon-Columbia Chapter \(AGC\)](#)  
[Construction Management Association of America - Oregon \(CMAA\)](#)  
[Design-Build Institute of America - Northwest Region \(DBIA\)](#)  
[Home Builders Association of Metropolitan Portland \(HBA\)](#)  
[Oregon Remodelers Association \(ORA\)](#)







# The Predicator

## IN THE SPOTLIGHT

### March Meeting: Designing for the Post Carbon Economy

*Alicia Clark, CSI-EP, CDT, Chapter Director, Programs Chair*



Tuesday, March 10, 2015 from 5:30-7:30 PM  
The Sentinel (formerly The Governor Hotel)  
Cost: \$30 members / \$40 non-members includes presentation and hearty appetizer. No host bar.  
Presenter: Eric Corey Freed, Vice President of Global Outreach, [International Living Future Institute](#)

The next generation of buildings can't simply continue trying to be "less bad" or make us feel guilty for our lifestyles. What is needed are living, regenerative buildings that do no harm and repair the damage we've done. In this talk we will explore new models for how to transform our buildings into living habitats. Event sponsorship for \$250 is still available. [LEARN MORE >](#)

## PRESIDENT'S MESSAGE

### President's Message: Where do we go from here?

*Cherise Schacter, CSI, CDT, Chapter President*



In my preparations for the CSI Academies, I got to thinking about how much the AEC industry has changed in the 30 years that I have been a part of it. As the voices in my head tend to wander, my thoughts strayed to the top five risks for design firms and how they have not changed since 1973.

1. Failure to supervise inexperienced employees.
2. Inadequate project coordination and in-house communication.
3. Failure to communicate between the prime professional and the consultants.
4. Lack of quality control on design changes.
5. Poorly worded contract documents.

All of these musings led me to ask myself, with the lightning speed of change we are seeing in the way we do our jobs, are we keeping up? My conclusion - not even close! [READ MORE >](#)

## CSI PORTLAND EVENTS



JOIN OUR MAILING LIST

SUBMIT NEWS

### In this Issue

[Save the Dates](#)

[President's Message](#)

[Industry Forum 2015](#)

[Firestopping Systems Recap](#)

[Save the Dates](#)

[Energy Sub-Metering](#)

[Understanding Roofing Assemblies](#)

[CDT Classes](#)

[Underway](#)

[Are you a Kraken?](#)

[Get Social](#)

[Membership Report](#)

[Upcoming CSI Conferences](#)

[CSI Academies](#)

[Construct 2015](#)

[Region Chapter Contacts](#)

[2015 Technical Products Showcase](#)

[2015 SeaBec Symposium](#)



## Industry Forum 2015

Corey Morris CSI, CDT, Chapter Secretary, Share Group Chair

The Industry Forum is an annual educational and networking event, and this seventh annual Industry Forum promises the architects, designers, contractors, product representatives, fabricators and building owners together in a social event, featuring a keynote speaker and the "6x10", six ten-minute presentations by students and professionals on innovation in the building construction industry.

[REGISTER HERE >](#)

### Keynote Speaker



Shohei Shigematsu joined OMA in 1998 and became a partner in 2008. He has led the OMA office in New York since 2006 and is responsible for OMA's operations in North America. Under his direction, the New York office has overseen the completion of Milstein Hall at Cornell University as well as the construction of the Quebec National Beaux Arts

museum and the Faena Arts Center in Miami Beach. Sho has also led numerous direct collaborations with artists, including a pavilion in Cannes housing a seven screen system designed in collaboration with Kanye West, the Marina Abramovic Institute for the Preservation of Performance Art in upstate New York, and a studio renovation for artist Cai Guo Qiang in New York. Most recently, Sho led the winning competition designs for residential towers in Coconut Grove, the Miami Beach Convention Center, a mixed use project in Los Angeles, a tower in Sao Paulo and a new civic center masterplan in Bogota, Colombia. Shigematsu is a Design Critic for Harvard University Graduate School of Design.

### Sponsorship Opportunities Still Abound

- *Platinum Sponsorship:* \$2,500
- *Gold Exhibitor:* \$1,500
- *Silver Exhibitor:* \$950

[SIGN UP FOR SPONSORSHIP TODAY >](#)

## Firestopping Systems February Share Group Event

Alexander Lungershausen, CSI, CDT, AIA, LEED AP, Chapter Treasurer, Share Group Chair



On February 12, 2015 the Portland Specifier Share Group invited Bob Hasting, FCIA from Specialty Firestop Systems and Geoffrey D. Miller, LEED AP BD+C from Fortis Construction. Bob shared his 38 years of experience in the firestopping industry alerting all present to the challenges of this part of the work when not

[Upcoming AIA Events](#)

[Professional](#)

[Organizations](#)

[Allied Organizations](#)

[Upcoming Events](#)

### MARCH

#### March 6

[Controlling Comfort: The Benefits of VRF Heating and Cooling Systems for Buildings](#)

#### March 10

[March Chapter Meeting Designing for the Post Carbon Economy](#)  
The Sentinel

#### March 19

[Quartz Surfacing](#)

#### March 19

[Trends and Best Practices in Sustainability and Green Building](#)

#### March 24

[CSI Lecture Series Energy Sub-Metering: A Closer Look](#)  
Interface  
Engineering

#### March 27

[The Case for Cross Laminated Timber | Detailing Considerations for Mid-Rise](#)

#### March 30

CSI spring exams begin

### APRIL

#### April 14

April Chapter Meeting: The Future of the Lloyd Center District  
DoubleTree Lloyd

#### April 16-18

purposefully specified.

Smoke infiltration, the biggest threat to human life during a fire, quickly propagates through the smallest openings in rated walls, and only properly installed and tooled firestopping in correctly cut penetrations will provide adequate protection around penetrations. All firestop systems should be installed by an UL/FM approved contractor, which is a higher qualification than just a firestopping manufacturer-approved installer. An upcoming update to IBC Chapter 7, which is currently under review, is proposing third party inspection of firestop installations by an Agency with an AC291 accreditation.

## Save the Dates: Upcoming Chapter Meetings & Events

*Alicia Clark, CSI-EP, CDT, Chapter Director, Programs Chair*



### April Chapter Meeting - The Future of the Lloyd Center District

Tuesday, April 14, 2015  
DoubleTree Lloyd Center

The Lloyd district is experiencing a huge increase in construction and revitalization. We are currently putting a panel together to discuss some of the most visible projects happening right now in the district. Stay tuned for more details to come.



### Industry Forum 2015: Art by Design with OMA

May 12, 2015 from 4-9 PM  
Location: Portland Art Museum

[LEARN MORE HERE >](#)  
[DOWNLOAD FLYER HERE >](#)



### 3rd Annual Chili Cook-Off

Tuesday, June 9, 2015  
Location: TBD

All you chefs out there, start getting together your Chili Cook-off teams. Competition will be fierce to try and unseat the reigning CSI Kraken

Team in our 3rd Annual Chili Cook-off and Awards Night. It will be a fun night of music, good beer, scintillating chili, and stiff competition. More details to follow soon!



### Annual Golf Tournament

August 27, 2015  
Lewis River Golf Course

[DOWNLOAD REGISTRATION FORM >](#)

## EDUCATION

## Lecture Series Energy Sub-Metering: A Closer Look

*Jake LaManna, CSI-EP, CDT, Chapter Director, Education Chair*

CSI Academies  
San Francisco, CA

### April 21

Lecture Series:  
Understanding Roof Assemblies

### LATER

### May 1

CSI Fellowship  
endorsement letters  
deadline

### May 12

[CSI Portland  
Industry Forum  
2015](#)  
Portland Art  
Museum

### May 13-16

Tri-Region  
Conference  
San Diego, CA

### May 19

2015 SeaBec  
Symposium:  
High/Low Tech, The  
Evolution of Building  
Enclosures  
Seattle Art Museum

### June 9

3rd Annual CSI Chili  
Cookoff  
Location TBD

### August 27

[CSI Annual Golf  
Tournament](#)  
Lewis River Golf  
Course

### Sept 30-Oct 3

Construct 2015  
St. Louis, MO

### 2016

### May 18-22

Bi-Region  
Conference  
Lake Tahoe

Thank You to our  
Industry Forum  
Early Bird



March 24, 2015 5:30 - 7:30 PM

Location: Interface Engineering

100 SW Main Street, Suite 1600, Portland, OR 97201

Presenter: Alexei Holstein, Veris Industries

Join us for a discussion of what sub-metering is and how you can employ it on your next project. This session will cover codes, standards and market conditions influencing the need for sub meters. We will discuss how metering data can be expressed through visual dashboards and identify efficient and space saving metering options, i.e. replacing multiple socket meters with High-Density metering. It will also explain cost saving and revenue generating opportunities via building energy management.

Engineers, bring your architects. Architects, bring your building owners and owner's representatives. Let's all learn the why and the how of incorporating sub-metering into your next project.

[REGISTER HERE >](#)

## Lecture Series: Understanding Roofing & Assemblies

*Jake LaManna, CSI-EP, CDT, Chapter Director, Education Chair*



April 21, 2015 5:30-7:30 PM

Location: Walsh Construction

2905 SW First Avenue, Portland, OR 97201

As one of the most critical enclosure components, the roof assembly is often one of the least understood. With so many system options and insulation strategies to choose from, it can be difficult to make the right decision for your project. Please join us for a panel discussion featuring local industry roofing experts, who will address common questions about roofing including:

- How do I know if I need a Class A roof- and what does that mean?
- what's the deal with vapor barriers- do I really need one?
- are vented low slope roofs acceptable in our climate?
- what options do I have for insulating roof assemblies?
- are white roofs really a good solution for our climate?

As with life, there are no dumb questions, so bring your burning questions and a hearty appetite. Refreshments and pizza will be served during the networking time prior to the moderated panel discussion.

Please contact Jake LaManna at [jake.lamanna@ohpd.net](mailto:jake.lamanna@ohpd.net) for further information on these education sessions or if you have an education session suggestion.

### CERTIFICATION

## CDT Classes Underway

*Kathy Hempel, CSI, CCCA, Chapter Director, Certification Chair*

### Sponsors





Our CDT classes are now underway. The first class was held on February 12th at Ankrom Moisan and went very smoothly thanks to Dennet Latham's fine instructing skills.

CSI's National website has been updated with the spring exam information. [CLICK HERE TO SIGN UP >](#)

**Did you know that you don't have to be a member of The Construction Specifications Institute to take the CDT exam or classes?** You can earn AIA CES and CSI CEN learning units while furthering your knowledge on the construction process.

The CDT exam (Construction Documents Technologist) Educations Program teaches a thorough overview of the design and construction process. It promotes an understanding of contractual agreements, roles, responsibilities, drawings and specifications, and construction delivery systems and how to consistently develop organized, effective construction documents.

Contact the committee if you have any questions or even if you want more information on what your options are. Kathy Hempel at [kathy@deamor.com](mailto:kathy@deamor.com) or Katie Kniesteadt at [KatieK@gbdarchitects.com](mailto:KatieK@gbdarchitects.com).

## KRAKEN

### Are you a Kraken?

*Cherise Schacter, CSI, CDT, Chapter President*



You should be! The CSI Kraken Committee is a group of dedicated, positive, forward thinking members with a "go big or go home" attitude. The only requirements to call yourself a CSI Kraken is a willingness to adopt this attitude and help take our chapter to the next level. No meetings, no dues - just a willingness to pitch in, think outside the box and help make it happen. Contact me for more information.

## SOCIAL MEDIA

### Get Social



CSI Members in Portland, across the country and beyond are sharing information on LinkedIn Discussion Groups, Twitter and blogs that are full of great information. We encourage you to connect with these professionals and expand your network. We learn something new from them each and every

day.

Featured blogs this month:

[Furnish, Install or Provide?](#) by Sheldon Wolfe, FCSI, CCS

[DOWNLOAD A FULL LIST OF SOCIAL RESOURCES HERE >](#)

## MEMBERSHIP

### Membership Report

## **Members with renewal dates in February and March may**

**now login at [portal.csinet.org](http://portal.csinet.org) and renew.**

These members were unable to renew until late last week. Direct renewing members to login at [portal.csinet.org](http://portal.csinet.org) and look for a "Renew Your Membership" link in yellow on the left. Paper invoices will also be mailed to these members, however applications received by fax or mail are not automated and are processed much more slowly. Using the online system increases accuracy of information and speed, and reduces the time and resources needed to process the applications backlog.

## **Members can update their information**

**at [portal.csinet.org](http://portal.csinet.org).** Direct them to log in and click "update your profile" on the left. Members can change their contact information, join a practice group, select email and fax preferences, choose to be included in CSI's Member Directory, and add social media profiles, among other options. Note: information about speakers and accommodations is not in active use yet.

## **New members may join online at [portal.csinet.org](http://portal.csinet.org).**

Again, applications received by fax or mail are not automated and are processed much more slowly. Direct new members to join online.

**Corporate partner members** should direct all inquiries on any aspect of membership or participation in CSI national programming to CSI Corporate Partner Manager Shannon Pennington at [spennington@csinet.org](mailto:spennington@csinet.org). Corporate partners' needs are handled by CSI's Corporate Partners team.

## **CSI NATIONAL NEWS**

# Upcoming CSI Conferences



**Tri Region Conference: Southwest, Northwest  
and West Regions coming together to build  
better**

May 13-16, 2015

Mission Bay Hilton, San Diego, CA

3 Regions + 20 Chapters + 2,700 Members =  
1 great conference!

We are looking forward to joining with our CSI colleagues throughout the western US for a great time of leadership training, professional education, team building, and just plain fun! Major activities include:

- Region board and annual meetings
- Product show with up to 70 booths
- CSI leadership training, including a tri region challenge
- Education tracks on energy conservation, accessibility, and more

- Welcome reception
- Local tours, including the San Diego Zoo
- AIA-CSI Golf tournament

Meet people with the same concerns and issues. Enlarge your base of experts. 8.5 hours of quality construction industry education with continuing education credits.

### Sponsorships

Get your products seen at dedicated sponsor-oriented activities. Some sponsor opportunities include presenting an education session of your choice. Some also include conference registrations so you can spend time with key, technically-oriented architects and engineers during the entire event. There are so many ways to make connections and contacts with the people making product decisions every day.

[LEARN MORE HERE >](#)



### Bi Region Conference

Early Planning is underway for the Bi-Region Conference May 18-22nd, 2016 in Lake Tahoe. If you are interested in helping out please let one of your region leaders know.

---

## CSI Academies



April 16-18, 2015  
San Francisco, CA

[REGISTER HERE >](#)

Sponsorship packages are now available for this event attended by experienced specifiers, contract administrators and product reps from all over the country. [DOWNLOAD INFO HERE >](#)

---

## Construct 2015



CSI CONSTRUCT will be held in St Louis, Mo from September 30 to October 3rd, 2015. If last year was

any indication, this will be a wonderful week of networking, education, sightseeing and laughing along with catching up with old and new friends. For a review of the events of this year may I suggest going on twitter and searching for #CONSTRUCT or #CSINIGHTOUT

---

## Institute and Region Chapters

[CSI National](#)  
[CSI Northwest Region](#)

Chapter	Contact	Phone	Monthly
---------	---------	-------	---------



<b>Name</b>			<b>Meetings</b>
<u>Big Sky</u>	Jan O'Brien	406-245-6363	Last Tuesday
<u>Capital</u>	Chris Veit	503-390-0291	Third Thursday
<u>Cook Inlet</u>	Mark Hughes	907-267-5163	Third Tuesday
<u>Idaho</u>	Karen Morris	208-343-3620	Third Tuesday
<u>Mt. Rainier</u>	Bob Kenworthy	253-931-4904	First Thursday
<u>Puget Sound</u>	Andrew Estep	206-382-3393	Second Thursday
<u>Spokane</u>	Georgia Spencer	509-328-2771	Second Thursday
<u>Willamette Valley</u>	Alorie Mayer	541-485-0922	Last Thursday

## INDUSTRY NEWS

### Quartz Surfacing

Presented by: Cambria

March 19, 2015 11:30 AM - 2:00 PM (presentation 12-1 PM)

Location: FloForm Countertops

9220 SW Nimbus Avenue, Beaverton, OR 97008

[DOWNLOAD FLYER HERE >](#)

### 2015 SeaBec Symposium High/Low Tech: The Evolution of Building Enclosures

May 19, 2015

Location: Seattle Art Museum

Cost: \$100 members/\$125 non-members before 5/1/2015

We have an amazing lineup of presenters who will be discussing various topics including new enclosure technologies, biomimicry, kinetic architecture, and cold climate design. Six hours of AIA continuing education credits will be provided. The keynote speaker is Kai-Uwe Bergmann, Partner at Bjarke Ingels Group (BIG) based in New York City. His presentation "Hot to Cold: An Odyssey of Architectural Adaptation" will document a series of projects from the hottest to the coldest parts of our planet, and will explore how the designs were shaped by their cultural and climatic contexts. Other

speakers include: \* Russel Fortmeyer, LEED AP, BD+C, Associate,  
Arup Los Angeles \* Jack Herbert, Chief Executive Officer, Cold Climate  
Housing Research Center \* Rankin Naldrett-Jays, Product Manager, Sto  
Corporation \* Peter Ryan, AIA, Associate Principal, Wiss Janney Elstner  
Associates Inc. \* Kathrina Simonen, AIA, SE, LEED AP, Associate  
Professor, University of Washington. [DOWNLOAD FLYER HERE >](#)

---

## Upcoming AIA Events

[Controlling Comfort: The Benefits of VRF Heating and Cooling Systems for Buildings](#)

Friday, March 6th (9am-11am) Breakfast will be included!

[Trends and Best Practices in Sustainability and Green Building](#)

Thursday, March 19th (8am-10am) Coffee and Refreshments included!

[The Case for Cross Laminated Timber | Detailing Considerations for Mid-rise](#)

Friday, March 27th (12pm - 2pm) Lunch included!

Class Locations:

AIA Portland  
403 NW 11th Avenue  
Portland, OR 97209

AIA will extend the special AIA member discount to CSI members as well.

---

## Professional Organizations

[Construction Specifications Canada \(CSC\)](#)

[Construction Specifications Institute \(CSI\)](#)

[Specifications Consultants in Independent Practice \(SCIP\)](#)

---

## Allied Organizations

Got an addition to the list? Send it to [portlandcsi@gmail.com](mailto:portlandcsi@gmail.com).

### Design

[American Institute of Architects - Portland \(AIA\)](#)

[American Society of Interior Designers \(ASID\)](#)

[Cascadia Region Green Building Council \(GBC\)](#)

[National Association of Office and Industrial Properties - Oregon \(NAIOP\)](#)

[Society for Marketing Professional Services - Oregon \(SMPS\)](#)

[Architectural Foundation of Oregon \(AFO\)](#)

### Technical

[American Society of Mechanical Engineers - Oregon \(ASME\)](#)

[American Society of Plumbing Engineers - Portland Chapter](#)

[Building Owners and Managers Association International - Oregon \(BOMA\)](#)

[International Facilities Management Association - Oregon & SW](#)

Washington Chapter (IFMA)

Portland Building Enclosure Council (BEC)

**Construction**

Associated General Contractors - Oregon-Columbia Chapter (AGC)

Construction Management Association of America - Oregon (CMAA)

Design-Build Institute of America - Northwest Region (DBIA)

Home Builders Association of Metropolitan Portland (HBA)

Oregon Remodelers Association (ORA)

National Women in Construction - Portland Chapter #54 (NAWIC)



# The Predicator

## IN THE SPOTLIGHT

### April Meeting: Looking at Lloyd

*Alicia Clark, CSI-EP, CDT, Chapter Director, Programs Chair*



Tuesday, April 14, 2015

5:30 - 7:30 PM

DoubleTree at Lloyd Center

Cost: CSI member \$30 / Non-member \$40

Heavy appetizers, no host bar, free parking

The Lloyd District has been growing and expanding, so we are going to take a closer look at the different projects underway that span housing and hotels, to commercial renovation. The panel will talk about the following projects:

- Hasslo on Eighth
- The Lloyd Center Mall Renovation
- The Convention Hotel

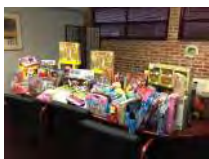
Our panelists include:

- Wade Lange, CPM, RPA, FMA - Vice President, Regional Manager - Portland, American Assets Trust
- Michael Great, LEED AP, Managing Principal, Ankrom Moisan Architects
- Bill Bailey, AIA, Partner, Waterleaf Architecture

[LEARN MORE >](#)

### 2014 CSI Toy Drive

*Alicia Clark, CSI-EP, CDT, Chapter Director, Programs Chair*



Our goal for our December toy drive benefitting Randall Childrens Hospital was 500 toys. While we didn't make it this year, we were proud to deliver 230 toys and items to the sick children in this facility. It is never too early to start thinking about this toy drive for December 2015. If you are able,

pick up something here or there to help put a smile on these kid's faces.

Contact Erica Bitterman-Ryon for more information or to deliver goodies at [ebitterman@precisionimages.com](mailto:ebitterman@precisionimages.com), 503-274-2030.

## PRESIDENT'S MESSAGE



JOIN OUR  
MAILING LIST

SUBMIT NEWS

#### In this Issue

[April Meeting:  
Looking at Lloyd](#)

[2014 CSI Toy Drive](#)

[President's Message](#)

[Industry Forum 2015](#)

[Save the Dates](#)

[Lecture Series:  
Understanding  
Roofing Assemblies](#)

[Good Luck but not  
Goodbye](#)

[Are you a Kraken?](#)

[Get Social](#)

[Membership Report](#)

[CSI Spring Member  
Orientation](#)

[The Road to  
Fellowship](#)

[CSI Academies](#)

[Upcoming CSI  
Conferences](#)

[Construct 2015](#)

[Region Chapter  
Contacts](#)

[Featured Product Day](#)

# President's Message: My First Tweet - Was it Worth it?

*Cherise Schacter, CSI, CDT, Chapter President*



April 9th will mark the third anniversary of my first tweet. Since April of 2012, I have accumulated 1,828 followers (almost all in AEC), I am following 2,000 people and I have tweeted (or retweeted) over 38,000 times.

I will be the first to admit that I thought Twitter was just about the stupidest thing anyone could do. I mean, really, who in their right mind cares where I am eating. It's just a bunch of kids following the Kardashians and teen idols, right? Turns out, like most of the clueless people walking around this planet, I was making a lot of assumptions based on perception and not based on facts. [READ MORE >](#)

## CSI PORTLAND EVENTS



## It's Coming Soon: Industry Forum 2015 with OMA

*Corey Morris CSI, CDT, Chapter Secretary, Share Group Chair*

**Tuesday May 12, 2015  
4:00 PM to 9:00 PM PDT  
Portland Art Museum, Kridel Ballroom**

The Industry Forum, attended by hundreds of designers, engineers, contractors, product representatives and project owners, provides the design and construction community an annual informative and stimulating look at what's new and innovative in the industry. Tickets are \$25 (Students \$10).

The "6x10" is a series of six ten-minute presentations by six different presenters on a variety of topics related to innovation in the design and construction fields. Check back soon - we're finalizing the schedule of 6x10 presenters.

Our keynote for 2015 is Shohei Shigematsu from OMA. OMA is a leading international partnership practicing architecture, urbanism, and cultural analysis. OMA's buildings and masterplans around the world insist on intelligent forms while inventing new possibilities for content and everyday use. OMA is led by ten partners - Rem Koolhaas, Ellen van Loon, Reinier de Graaf, Shohei Shigematsu, Iyad Alsaka, David Gianotten, Chris van Duijn, Ippolito Pestellini Laparelli, Jason Long and Michael Kokora - and maintains offices in Rotterdam, New York, Beijing, Hong Kong, Doha and Dubai.

[REGISTER HERE >](#)

**Sponsorship Opportunities Still Available**

[at AIA](#)

[SDA 19th Annual  
CANstruction](#)

[IES Daylighting  
Presentation](#)

[2015 SeaBec  
Symposium](#)

[Professional  
Organizations](#)

[Allied Organizations](#)

## Upcoming Events

### APRIL

**April 3**  
[Featured Product  
Day at AIA](#)  
AIA Center for  
Architecture

**April 14**  
[April Chapter  
Meeting: The Future  
of the Lloyd Center  
District](#)  
5:30-7:30 PM  
DoubleTree Lloyd

**April 14**  
[CSI Spring Member  
Orientation](#)  
4:45-5:30 PM  
DoubleTree Lloyd  
Center

**April 16-18**  
[CSI Academies](#)  
San Francisco, CA

**April 20**  
[IES Daylighting  
Presentation](#)  
World Trade Center

**April 21**  
[Lecture Series:  
Understanding Roof  
Assemblies](#)  
5:30-7:30 PM  
Walsh Construction

**April 27 - May 3**  
[SDA 19th Annual  
CANstruction](#)

### MAY

- *Platinum Sponsorship:* \$2,500
- *Gold Exhibitor:* \$1,500
- *Silver Exhibitor:* \$950

[SIGN UP FOR SPONSORSHIP TODAY >](#)

## Save the Dates: Upcoming Chapter Meetings & Events

*Alicia Clark, CSI-EP, CDT, Chapter Director, Programs Chair*



### Industry Forum 2015: Art by Design with OMA

May 12, 2015 from 4-9 PM  
Location: Portland Art Museum

[LEARN MORE HERE >](#)  
[DOWNLOAD FLYER HERE >](#)



### 3rd Annual Chili Cook-Off & Chapter Awards

Tuesday, June 9, 2015 from 5:30-8:30 PM  
Location Announced: Lucky Labrador - Northwest  
All you chefs out there, start getting together your Chili Cook-off teams. Competition will be fierce to try and unseat the reigning CSI Kraken

Team in our 3rd Annual Chili Cook-off and Awards Night. It will be a fun night of music, good beer, scintillating chili, and stiff competition. [RSVP HERE >](#)

[DOWNLOAD TEAM INFORMATION HERE >](#)



### Annual CSI Architectural Scavenger Hunt

July 14, 2015 from 5:30-7:30 PM  
We are busy planning our popular scavenger hunt for July. This free event is a great way to come network, have some fun, and see what CSI can offer. Make sure to mark your calendars. More details will be coming soon...



### Annual Golf Tournament

August 27, 2015  
Lewis River Golf Course

[DOWNLOAD REGISTRATION FORM >](#)

## EDUCATION

## Lecture Series: Understanding Roofing & Assemblies

*Jake LaManna, CSI-EP, CDT, Chapter Director, Education Chair*



April 21, 2015 5:30-7:30 PM  
Location: Walsh Construction  
2905 SW First Avenue, Portland, OR 97201

As one of the most critical enclosure components, the roof assembly is often one of the least understood. With so many system options and

**May 1**  
CSI Fellowship endorsement letters deadline

**May 8**  
[SDA Virtual Spring Conference](#)

**May 12**  
[CSI Portland Industry Forum 2015](#)  
Portland Art Museum

**May 13-16**  
[Tri-Region Conference](#)  
San Diego, CA

**May 19**  
[2015 SeaBec Symposium: High/Low Tech, The Evolution of Building Enclosures](#)  
Seattle Art Museum

### LATER

**June 9**  
[3rd Annual CSI Chili Cookoff & Chapter Awards](#)  
Lucky Labrador - Northwest

**July 14**  
CSI Architectural Scavenger Hunt  
5:30-7:30 PM  
Location: TBD

**August 27**  
[CSI Annual Golf Tournament](#)  
Lewis River Golf Course

**Sept 30-Oct 3**  
[Construct 2015](#)  
St. Louis, MO

### 2016

**May 18-22**  
Bi-Region Conference  
Lake Tahoe

insulation strategies to choose from, it can be difficult to make the right decision for your project. Please join us for a panel discussion featuring local industry roofing experts, who will address common questions about roofing including:

- How do I know if I need a Class A roof- and what does that mean?
- what's the deal with vapor barriers- do I really need one?
- are vented low slope roofs acceptable in our climate?
- what options do I have for insulating roof assemblies?
- are white roofs really a good solution for our climate?

As with life, there are no dumb questions, so bring your burning questions and a hearty appetite. Refreshments and pizza will be served during the networking time prior to the moderated panel discussion.

Please contact Jake LaManna at [jake.lamanna@ohpd.net](mailto:jake.lamanna@ohpd.net) for further information on these education sessions or if you have an education session suggestion.

## CERTIFICATION

### Good Luck but not Goodbye

*Kathy Hempel, CSI, CCCA, Chapter Director, Certification Chair*



Our CDT classes are complete and we wish all of our students GOOD LUCK on their exams over the next couple of months.

Did you know that you don't have to be a member of The Construction Specifications Institute to take the CDT exam or classes? You can earn AIA CES and CSI CEN learning units while furthering your knowledge on the construction process.

The CDT exam (Construction Documents Technologist) Educations Program teaches a thorough overview of the design and construction process. It promotes an understanding of contractual agreements, roles, responsibilities, drawings and specifications, and construction delivery systems and how to consistently develop organized, effective construction documents.

Contact the committee if you have any questions or even if you want more information on what your options are. Kathy Hempel at [kathy@deamor.com](mailto:kathy@deamor.com) or Katie Kniesteadt at [KatieK@gbdarchitects.com](mailto:KatieK@gbdarchitects.com).

## KRAKEN

### Are you a Kraken?

*Cherise Schacter, CSI, CDT, Chapter President*



You should be! The CSI Kraken Committee is a group of dedicated, positive, forward thinking members with a "go big or go home" attitude. The only requirements to call yourself a CSI Kraken is a willingness to adopt this attitude and help take our chapter to the next level. No meetings, no dues - just a willingness to pitch in, think outside the box and help make it happen. Contact me for more information.

Thank You to our  
Industry Forum  
Committed  
Sponsors





CSI Portland would like to say thank you to Eric Corey Freed of The Living Future Institute for his engaging and enlightening presentation on Designing for the Post Carbon Economy at our February meeting. I first got to know Eric through my activities in Social Media and on Twitter. When he said he was moving to Portland and joining Living Future, it was a natural to ask him to come speak to our Chapter. Portland CSI is working hard to reach out to other industry organizations to share knowledge and resources. We appreciate Eric's gracious willingness to share his time and expertise!

## SOCIAL MEDIA

### Get Social



CSI Members in Portland, across the country and beyond are sharing information on LinkedIn Discussion Groups, Twitter and blogs that are full of great information. We encourage you to connect with these professionals and expand your network. We learn something new from them each and every

day.

Featured blogs this month:

[Haystacks: Do construction documents do what they're supposed to?](#)  
by Sheldon Wolfe, FCSI, CCS

Spec That by Gary Beimers, CSI, Independent Consultant

- [Window washing systems](#)
- [Metal parking bumpers](#)
- [Door hardware 01](#)
- [Gutters and downspouts](#)

[DOWNLOAD A FULL LIST OF SOCIAL RESOURCES HERE >](#)

## MEMBERSHIP

### Membership Report

Our national institute has been doing an update and overhaul to their website. At this time, updated data is just becoming available. We are hoping to publish complete, updated information in the next newsletter. Thank you all for your patience.

### CSI Spring Member Orientation at the April Chapter Meeting

*Alicia Clark, CSI-EP, CDT, Chapter Director, Programs Chair*



Each year, Portland Chapter CSI has a Member Orientation event. It is good way for us to meet you and for you to know who to contact when you have questions about CSI. Take this opportunity to meet your Board and Committee Chairs and other officers of the Portland Chapter CSI and to receive your new member pin. The member orientation event is not just for new members, but is also open to existing members who want to get more from their membership. It will be held right before the April Chapter meeting in the same venue.



[LEARN MORE >](#)

## CSI NATIONAL NEWS

# The Road to Fellowship

*Phillip L. McDade, FCSI, CCS, FASLA, Jury of Fellows Chair*



Hopefully by now, those of you that are submitting for Fellowship in the Institute this year have begun the process by asking some very personal questions of yourself, and if you answered those positively, you have begun the process! . If you're having trouble getting started the following 4 questions should get you going. [READ MORE >](#)

## CSI Academies



April 16-18, 2015

San Francisco, CA

[REGISTER HERE >](#)

Sponsorship packages are now available for this event attended by experienced specifiers, contract administrators and product reps from all over the country. [DOWNLOAD INFO HERE >](#)

## Upcoming CSI Conferences



### Tri Region Conference

May 13-16, 2015

Mission Bay Hilton, San Diego, CA

CSI San Diego Chapter invites you to join us in sunny San Diego California for the CSI Tri-Region Conference May 13th thru 16th 2015 at the beautiful Hilton Mission Bay Resort. The CSI Tri-Region Conference will be jam packed with activities, networking, educational seminars, product shows, guest speakers and experiences you won't want to miss. Click on the links for additional information.



Check out the world famous San Diego Zoo at the conference.

Saturday, May 16, 2015 from 4-10 PM

\$99 per person (not included in conference registration) [REGISTER HERE >](#)

Includes transportation to and from the zoo, 2 hour zoo admission (\$48 value), private event space with an exotic animal show, dinner and dancing with a live band. Buses will leave from the hotel starting at 3:00 PM and return to the hotel afterwards (included in the cost). You will get your zoo entry passes on the bus.



### Bi Region Conference

May 18-22, 2016

Lake Tahoe

If you are interested in helping out please let one of your region leaders know.

## Construct 2015



CSI CONSTRUCT will be held in St Louis, Mo from

September 30 to October 3rd, 2015. If last year was

any indication, this will be a wonderful week of networking, education,

sightseeing and laughing along with catching up with old and new

friends. For a review of the events of this year may I suggest going on

twitter and searching for #CONSTRUCT or #CSINIGHTOUT

## Institute and Region Chapters

CSI National

CSI Northwest Region

Chapter Name	Contact	Phone	Monthly Meetings
<u>Big Sky</u>	Jan O'Brien	406-245-6363	Last Tuesday
<u>Capital</u>	Chris Veit	503-390-0291	Third Thursday
<u>Cook Inlet</u>	Mark Hughes	907-267-5163	Third Tuesday
<u>Idaho</u>	Karen Morris	208-343-3620	Third Tuesday
<u>Mt. Rainier</u>	Bob Kenworthy	253-931-4904	First Thursday
<u>Puget Sound</u>	Andrew Estep	206-382-3393	Second Thursday
<u>Spokane</u>	Georgia Spencer	509-328-2771	Second Thursday
<u>Willamette Valley</u>	Alorie Mayer	541-485-0922	Last Thursday

## INDUSTRY NEWS

### Featured Product Day at AIA on April 3rd



Join AIA Portland for a fun and fast-paced

educational event. Learn about products in a

condensed presentation from up to 9 vendors while

earning 2 AIA HSW/CEH credits. Attendees at either session will be

entered to win a new GoPro camera. You may choose to attend either

the morning OR the afternoon session.

**Morning Session:**

8:00 am - doors open for vendor displays and drawing entry

8:30 am - CLOCK STARTS on speed education

10:30 am - speed education convenes

Coffee and snacks provided

**Afternoon Session:**

3:00 pm - doors open for vendor display and drawing entry

3:30 pm - CLOCK STARTS on speed education

5:30 pm - speed education convenes

Beer and snacks provided

[REGISTER HERE >](#)

---

## SDA 19th Annual CANstruction - April 27 - May 3



Canstruction is the most unique food charity in the world. A foundation of the Society for Design Administration (SDA), Canstruction is a design/build competition held in cities throughout the world. Each year teams of architects, engineers and contractors compete to build unique sculptures made entirely out of canned foods. Portland is one of more than

150 cities around the world taking part in the international competition, which has donated more than 25 million pounds of food to local hunger programs since its founding in 1992. Since its inception in 1997, the Portland event has raised approximately 526,219 pounds of food and donated \$186,242 to help fight hunger in Oregon and Southwest Washington.

The Awards Gala will be April 28th at 5:30 at Punch Bowl Social inside Pioneer Place.

---

## IES Daylighting Presentation - Reservations due by Apr. 15th



April 20, 2015 from 11:30 AM to 1:30 PM

World Trade Center, Plaza Conference Room

121 SW Salmon, 2WTC Bldg, Portland, OR 97204

Cost: \$25 members/\$30 non-members/\$5 students

[DOWNLOAD FLYER HERE >](#)

---

## 2015 SeaBec Symposium High/Low Tech: The Evolution of Building Enclosures



May 19, 2015

Location: Seattle Art Museum

Cost: \$100 members/\$125 non-members before 5/1/2015

We have an amazing lineup of presenters who will be discussing various topics including new enclosure technologies, biomimicry, kinetic architecture, and cold climate design. Six hours of AIA continuing education credits will be provided. The keynote speaker is Kai-Uwe Bergmann, Partner at Bjarke Ingels Group (BIG) based in New York City. His presentation "Hot to Cold: An Odyssey of Architectural Adaptation" will document a series of projects from the hottest to the coldest parts of our planet, and will explore how the designs were shaped by their cultural and climatic contexts. Other speakers include: \* Russel Fortmeyer, LEED AP, BD+C, Associate, Arup Los Angeles \* Jack Herbert, Chief Executive Officer, Cold Climate Housing Research Center \* Rankin Naldrett-Jays, Product Manager, Sto Corporation \* Peter Ryan, AIA, Associate Principal, Wiss Janney Elstner Associates Inc. \* Kathrina Simonen, AIA, SE, LEED AP, Associate Professor, University of Washington. [DOWNLOAD FLYER HERE >](#)

---

## Professional Organizations

[Construction Specifications Canada \(CSC\)](#)  
[Construction Specifications Institute \(CSI\)](#)  
[Specifications Consultants in Independent Practice \(SCIP\)](#)

---

## Allied Organizations

Got an addition to the list? Send it to [portlandcsi@gmail.com](mailto:portlandcsi@gmail.com).

### Design

[American Institute of Architects - Portland \(AIA\)](#)  
[American Society of Interior Designers \(ASID\)](#)  
[Cascadia Region Green Building Council \(GBC\)](#)  
[National Association of Office and Industrial Properties - Oregon \(NAIOP\)](#)  
[Society for Marketing Professional Services - Oregon \(SMPS\)](#)  
[Architectural Foundation of Oregon \(AFO\)](#)

### Technical

[American Society of Mechanical Engineers - Oregon \(ASME\)](#)  
[American Society of Plumbing Engineers - Portland Chapter](#)  
[Building Owners and Managers Association International - Oregon \(BOMA\)](#)  
[International Facilities Management Association - Oregon & SW Washington Chapter \(IFMA\)](#)

Portland Building Enclosure Council (BEC)

**Construction**

Associated General Contractors - Oregon-Columbia Chapter (AGC)

Construction Management Association of America - Oregon (CMAA)

Design-Build Institute of America - Northwest Region (DBIA)

Home Builders Association of Metropolitan Portland (HBA)

Oregon Remodelers Association (ORA)

National Women in Construction - Portland Chapter #54 (NAWIC)



# The Predicator

## IN THE SPOTLIGHT



## Now is the Time

*Corey Morris CSI, CDT, Chapter Secretary, Share Group Chair*

**Tuesday May 12, 2015**  
**4:00 PM to 9:00 PM PDT**  
**Portland Art Museum, Kridel Ballroom**

If you haven't claimed your spot as a Gold or Silver sponsor yet, you have just days left to do so.

Want to attend? Tickets are at [portland.csinet.org](http://portland.csinet.org) or tell your favorite product rep (not your competitor!) that you'd like to be their guest!

[REGISTER HERE >](#)

## CSI PORTLAND EVENTS

## Save the Dates: Upcoming Chapter Meetings & Events

*Alicia Clark, CSI-EP, CDT, Chapter Director, Programs Chair*



### Industry Forum 2015: Art by Design with OMA

May 12, 2015 from 4-9 PM  
 Location: Portland Art Museum

[LEARN MORE HERE >](#)  
[DOWNLOAD FLYER HERE >](#)



### 3rd Annual Chili Cook-Off & Chapter Awards

Tuesday, June 9, 2015 from 5:30-8:30 PM  
 Location Announced: Lucky Labrador - Northwest  
 All you chefs out there, start getting together your Chili Cook-off teams. Competition will be fierce to try and unseat the reigning CSI Kraken

Team in our 3rd Annual Chili Cook-off and Awards Night. It will be a fun night of music, good beer, scintillating chili, and stiff competition. [RSVP HERE >](#)

[DOWNLOAD TEAM INFORMATION HERE >](#)



JOIN OUR  
MAILING LIST

SUBMIT NEWS

### In this Issue

[Industry Forum 2015](#)

[Save the Dates](#)

[Education Committee  
Break](#)

[Classifieds](#)

[Get Social](#)

[Membership Report](#)

[Annual Joint CSI  
Olympia Chapter  
Meeting with AIA SWW](#)

[CSI Willamette Valley  
Chapter 50th  
Anniversary](#)

[Upcoming CSI  
Conferences](#)

[Student & Young  
Professional Day at  
Construct 2015](#)

[Region Chapter  
Contacts](#)

[The Suburban Revival](#)

[Engineering and  
Internet Security](#)

[The Spirit of Details:  
Tilikum Crossing](#)

[2015 Products](#)

## Architecture Scavenger Hunt

### Annual CSI Architectural Scavenger Hunt

July 14, 2015 from 5:30-7:30 PM

We are busy planning our popular scavenger hunt for July. This free event is a great way to come network, have some fun, and see what CSI can offer. Make sure to mark your calendars. More details will be coming soon...



### Annual Golf Tournament

August 27, 2015

Lewis River Golf Course

[DOWNLOAD REGISTRATION FORM >](#)

## EDUCATION

### Spring Break

*Jake LaManna, CSI-EP, CDT, Chapter Director, Education Chair*



The Education Committee has no events scheduled for May. We encourage all those who have been attending our education sessions this past winter/spring to attend the Industry Forum. It looks to be a spectacular opportunity for learning, as well as food and drink, which is pretty much what pdxCSI

Education Sessions are all about. We will be announcing summer education sessions soon, so stay tuned!

## CLASSIFIEDS

### For Sale: Drawing Desk

*Cherise Schacter, CSI, CDT, Chapter President*



Solid oak frame with adjustable maple top. Measurements are 84" width, depth 48", height 37" . Matching blocks fit bottom of legs to add 3" to the height. Table made by Hamilton, Two Rivers, Wisconsin. Price: \$1200

Contact Sam Boulis if interested at 503-929-1727 or samboulis@yahoo.com.

## SOCIAL MEDIA

### Get Social



CSI Members in Portland, across the country and beyond are sharing information on LinkedIn Discussion Groups, Twitter and blogs that are full of great information. We encourage you to connect with these professionals and expand your network. We learn something new from them each and every

day.

[Showcase/Tradeshow](#)

[2015 SeaBec](#)

[Symposium](#)

[High Performance](#)

[Building Design](#)

[Professional](#)

[Organizations](#)

[Allied Organizations](#)

Upcoming Events

### MAY

#### May 1

CSI Fellowship endorsement letters deadline

#### May 5

[The Suburban Revival: Planning for Growth and Creating Live/Work Desirability for Professionals](#)  
SMPS

#### May 8

[SDA Virtual Spring Conference](#)

#### May 12

[CSI Portland Industry Forum 2015](#)  
Portland Art Museum

#### May 13-16

[Tri-Region Conference](#)  
San Diego, CA

#### May 14

2015 Products Showcase/Tradeshow  
ASHRAE Oregon

#### May 19

[2015 SeaBec Symposium: High/Low Tech, The Evolution of Building Enclosures](#)  
Seattle Art Museum

#### May 20

[Annual Joint CSI Olympia Meeting with AIA SWW](#)

### JUNE

Featured blogs this month:

A recent tweet-chat included a stating that specifiers must stay up with the times. Indeed they do, but is that enough? Or are specifiers no longer needed?

[Are specifiers an endangered species?](#) by Sheldon Wolfe, FCSI, CCS

## MEMBERSHIP

# Membership Report: October 2014-February 2015

### December 2014

- Loren Boeckman, CSI; Alliance Window Co. Inc.; member since 2012
- Alicia Clark, CSI-EP, CDT; Emerick Construction Company; member since 2012
- Linda Joens, CSI; Cambria; member since 2007
- John Lamb, CSI; Structural Waterproofing Consultants; member since 1983
- Mike Murphy, CSI, CDT; Miller Paint Co.; member since 2006
- Ron Ogden, CSI; R. J. Ogden Associates, Inc.; member since 1986
- Scott Portman, CSI; Bostik, Inc.; member since 2004

### November 2014

- Marjorie Chang Fuller, CSI; Hoffman Construction; member since 1996
- James Cundiff, CSI; Cundiff Engineering, Inc.; member since 1989
- Danny Elkins, CSI; D & R Waterproofing, Inc.; member since 2007
- Ray Elkins, CSI; D & R Waterproofing, Inc.; member since 2007
- John Kouba, CSI; Malarkey Roofing Company; member since 2001
- Mike Manzi, RA, CSI, CDT, LEED AP; Boora Architects; member since 2010
- David Pugh Jr., CSI; Giffin Bolte Jurgens; member since 2006
- David Schulman, CSI, CDT; Portland Millwork; member since 2013
- Walt Suman, CSI, CDT; TekTerior Systems; member since 1985
- Christopher Veit, CSI, CCS; Carlson/Veit Architects, P.C.; member since 1983
- Toby White, CSI; Forensic Building Consultants; member since 2004
- David Young, PE, CSI; RDH Building Sciences Inc.; member since 2004

### October 2014

- Kean Bacus, CSI, AHC; Stanley Security Solutions; member since 2013
- Tana Bishop, CSI; Contractor Plan Center, Inc.; member since 1999
- Michelle Cartwright, CSI; Artek, Inc.; member since 2013
- Bill Coady, CSI, CCPR; Guardian Industries Corp.; member since 1994
- Ken Dzioba, CSI, CDT; Parex USA Inc.; member since 1996
- David Grigsby, CSI; ZGF Architects; member since 2012
- Richard Jermain, CSI, CDT, AHC; Allegion; member since 2004
- Halliday Meisburger, CSI, AIA; ZGF Architects; member since 2013
- Corey Morris, CSI, CDT; Carleton Hart Architecture; member

**June 5**

[High Performance Building Design Training](#)

AHRAE Oregon & NW Natural

**June 9**

[3rd Annual CSI Chili Cookoff & Chapter Awards](#)

Lucky Labrador - Northwest

**July 14**

CSI Architectural Scavenger Hunt  
5:30-7:30 PM  
Location: TBD

**LATER**

**August 27**

[CSI Annual Golf Tournament](#)

Lewis River Golf Course

**Sept 30-Oct 3**

[Construct 2015](#)  
St. Louis, MO

**2016**

**May 18-22**

Bi-Region Conference  
Lake Tahoe

Thank You to our  
Industry Forum  
Committed  
Sponsors





since 1998

- Terry Wildeboer, CSI; Isolatek International; member since 1991

## CSI NATIONAL NEWS

# Annual Joint CSI Olympia Chapter Meeting with AIA SWW

May 20, 2015 at 5:00-8:30 PM  
Olympia Regional Learning Academy  
2400 15th Avenue SE, Olympia, WA

The meeting program will be a tour of the Olympia Regional Learning Academy (ORLA) and a panel presentation on GCCM Project Delivery using the ORLA project as a case study. Panel members include Tim Byrne from the Olympia School District, Brian Fitzgerald CSI from TCF Architecture, and Drew Phillips from Forma Construction. The panel discussion will be moderated by Matt Nolan CSI from Performance Systems Inc. The tour and the panel discussion are each being registered for one AIA LU.

### Schedule:

5:00 to 5:15 p.m. - Check In  
5:15 and 5:30 p.m. - Tour Starting Times  
5:30 to 6:15 p.m. - ORLA Tours  
6:15 to 7:00 p.m. - Social and Appetizer Buffet  
7:15 to 7:30 p.m. - Chapter Business  
7:30 to 8:30 p.m. - Panel Presentation

[REGISTER BY MAY 8th >](#)

## CSI Willamette Valley Chapter 50th Anniversary Reception

Save the date: October 22, 2015  
Shadow Hills Country Club  
92512 River Road, Junction City, OR  
Social hour begins at 5:30 PM, dinner and program to follow

[DOWNLOAD INVITE >](#)

## Upcoming CSI Conferences



### Tri Region Conference

May 13-16, 2015  
Mission Bay Hilton, San Diego, CA

CSI San Diego Chapter invites you to join us in sunny San Diego California for the CSI Tri-Region Conference May 13th thru 16th 2015 at the beautiful Hilton Mission Bay Resort. The CSI Tri-Region Conference will be jam packed with activities, networking, educational seminars, product shows, guest speakers and experiences you won't want to miss. Click on the links for additional information.





Check out the world famous San Diego Zoo at the conference.  
 Saturday, May 16, 2015 from 4-10 PM  
 \$99 per person (not included in conference registration) [REGISTER HERE >](#)

Includes transportation to and from the zoo, 2 hour zoo admission (\$48 value), private event space with an exotic animal show, dinner and dancing with a live band. Buses will leave from the hotel starting at 3:00 PM and return to the hotel afterwards (included in the cost). You will get your zoo entry passes on the bus.



**Bi Region Conference**  
 May 18-22, 2016  
 Lake Tahoe  
 If you are interested in helping out please let one of your region leaders know.

## Student & Young Professional Day at Construct 2015



CSI CONSTRUCT will be held in St Louis, Mo from September 30 to October 3rd, 2015. This year, there

is a new event created for all students and young professionals just beginning their career. A full day has been planned just for you on September 30th. [LEARN MORE >](#)

## Institute and Region Chapters

[CSI National](#)  
[CSI Northwest Region](#)

Chapter Name	Contact	Phone	Monthly Meetings
<a href="#">Big Sky</a>	Jan O'Brien	406-245-6363	Last Tuesday
<a href="#">Capital</a>	Chris Veit	503-390-0291	Third Thursday
<a href="#">Cook Inlet</a>	Mark Hughes	907-267-5163	Third Tuesday
<a href="#">Idaho</a>	Karen Morris	208-343-3620	Third Tuesday
<a href="#">Mt. Rainier</a>	Bob Kenworthy	253-931-4904	First Thursday
<a href="#">Puget Sound</a>	Andrew Estep	206-382-3393	Second Thursday
<a href="#">Spokane</a>	Georgia Spencer	509-328-2771	Second Thursday
<a href="#">Willamette Valley</a>	Alorie Mayer	541-485-0922	Last Thursday

### INDUSTRY NEWS

## The Suburban Revival: Planning for Growth and Creating Live/Work

# Desirability for Professionals

May 5, 2015

7:30AM - 9:30AM

Multnomah Athletic Club - West End Center Ballroom  
1849 SW Salmon St., Portland, OR 97205

With large companies investing in talent of all demographics, suburban cities such as Beaverton, Hillsboro, Tualatin, and Gresham are experiencing considerable growth. How do corporations, developers, brokers, and city planners entice this accomplished subset of professionals to work - and live - in the suburbs? How is the urban fabric being woven to provide cultural options people crave? Join SMPS Oregon for a panel discussion about the future of the suburbs and how the Portland Metro areas are catering to growing needs and expectations. [REGISTER HERE >](#)

---

## Engineering and Internet Security

On May 5, 2015, 6:00 PM at Jake's Grill, 611 SW 10th Ave, Portland, OR 97205 the Professional Engineers of Oregon, Columbia Chapter will host a panel discussion on Engineering and Internet Security. The panel will consist of IS and cryptography experts in the field including David Archer of Galois, Brian Nordlund of Pacific Corp and Ron Ropp, Independent Consultant. We will have an opportunity to hear from some of these key players on how the Internet works and how they see Internet Security interfacing with public/private infrastructure design and control systems

Registration and networking is at 6:00 pm, dinner at 7:00 pm, the speakers at 7:45 pm; followed by dessert and coffee with the speakers at the conclusion of the program.

For more information contact Christian Steinbrecher, P.E., PEO Columbia Chapter Program Chair, [cfs@CaRPEngrs.com](mailto:cfs@CaRPEngrs.com) or 503-297-4827. PDH hours available to attendees. [REGISTER HERE >](#)

---

## The Spirit of Details

May 7, 2015 at 6:30 PM (reception to follow)

Collaborative Life Sciences Building, OHSU

2730 SW Moody Avenue, Portland, OR

Admission is free

Join three members of the bridge's design team in a conversation with UO Yeon Center Director, Randy Gragg. [LEARN MORE >](#)

---

## 2015 Products Showcase/Tradeshaw

Presented by: ASHRAE Oregon Chapter

May 14, 2015 1:00-5:30 PM

Sentinel Hotel, Upstairs Billiard Room

614 SW 11th Avenue

Portland, OR 97205

Food and beverages provided

Admission is free

Visit the vendor booths, get a sticker, and enter the drawing for one of four \$100 Amazon gift cards. A sampling of vendors showcasing products:

ACI Mechanical Sales / Airefco / Belimo / Benz Air / Cole Industrial / Columbia Hydronics / Emerson Network Power / Energy Saving Products / Fox Engineering / Johnson Air Products / Johnson Controls / Honeywell / Mason / METU-Striemer / N.C.C. / Nortek Air Solutions-Hunt Air / N.W. Natural Gas / Oregon Air Reps / Proctor Sales / Trane Oregon / Victaulic

[DOWNLOAD FLYER HERE >](#)

---

## 2015 SeaBec Symposium High/Low Tech: The Evolution of Building Enclosures



May 19, 2015

Location: Seattle Art Museum

Cost: \$100 members/\$125 non-members before 5/1/2015

We have an amazing lineup of presenters who will be discussing various topics including new enclosure technologies, biomimicry, kinetic architecture, and cold climate design. Six hours of AIA continuing education credits will be provided. The keynote speaker is Kai-Uwe Bergmann, Partner at Bjarke Ingels Group (BIG) based in New York City. His presentation "Hot to Cold: An Odyssey of

Architectural Adaptation" will document a series of projects from the hottest to the coldest parts of our planet, and will explore how the designs were shaped by their cultural and climatic contexts. Other speakers include: \* Russel Fortmeyer, LEED AP, BD+C, Associate, Arup Los Angeles \* Jack Herbert, Chief Executive Officer, Cold Climate Housing Research Center \* Rankin Naldrett-Jays, Product Manager, Sto Corporation \* Peter Ryan, AIA, Associate Principal, Wiss Janney Elstner Associates Inc. \* Kathrina Simonen, AIA, SE, LEED AP, Associate Professor, University of Washington. [DOWNLOAD FLYER HERE >](#)

---

## High Performance Building Design

June 5, 2015 at 7:30-11:30 AM (or stay later for free lunch)

NW Natural

220 NW Second Avenue, Floor 4 Hospitality Suite, Portland, 97209

Cost: \$25 students / \$75 public employee ? \$100 all others

Instructor: Tom Lawrence, Ph.D., P.E., LEED AP

NW Natural has partnered with the Oregon Chapter of ASHRAE to offer local architects, engineers, government employees and students an opportunity to receive training on High-Performance Building Design Training - Morning session approved by AIA and GBCI. Course participants will receive 3 PDHs/AIA LUs or .3 CEUs for this course.

Class Session: This course will present applications of new technologies and design concepts to achieve the goal of high-performance buildings, including net-zero or nearly net-zero energy buildings. The course discusses exactly what a high-performance building is from the perspective of various stakeholders. High performance is more than just energy efficiency, and this course addresses issues and methods for providing high performance in areas beyond energy efficiency, such as indoor environmental quality. The course also describes future trends toward high-performance buildings across the globe, and quickly summarizes how ASHRAE Standards (existing and those in development) address these topics. [DOWNLOAD INVITATION >](#)

---

## Professional Organizations

[Construction Specifications Canada \(CSC\)](#)

[Construction Specifications Institute \(CSI\)](#)

[Specifications Consultants in Independent Practice \(SCIP\)](#)

---

## Allied Organizations

Got an addition to the list? Send it to [portlandcsi@gmail.com](mailto:portlandcsi@gmail.com).

**Design**

[American Institute of Architects - Portland \(AIA\)](#)

[American Society of Interior Designers \(ASID\)](#)

[Cascadia Region Green Building Council \(GBC\)](#)

[National Association of Office and Industrial Properties - Oregon \(NAIOP\)](#)

[Society for Marketing Professional Services - Oregon \(SMPS\)](#)

[Architectural Foundation of Oregon \(AFO\)](#)

**Technical**

[American Society of Mechanical Engineers - Oregon \(ASME\)](#)

[American Society of Plumbing Engineers - Portland Chapter](#)

[Building Owners and Managers Association International - Oregon \(BOMA\)](#)

[International Facilities Management Association - Oregon & SW Washington Chapter \(IFMA\)](#)

[Portland Building Enclosure Council \(BEC\)](#)

**Construction**

[Associated General Contractors - Oregon-Columbia Chapter \(AGC\)](#)

[Construction Management Association of America - Oregon \(CMAA\)](#)

[Design-Build Institute of America - Northwest Region \(DBIA\)](#)

[Home Builders Association of Metropolitan Portland \(HBA\)](#)

[Oregon Remodelers Association \(ORA\)](#)

[National Women in Construction - Portland Chapter #54 \(NAWIC\)](#)



# The Predicator

## IN THE SPOTLIGHT

### June Chapter Meeting: 3rd Annual Chili Cook-Off & Chapter Awards

*Alicia Clark, CSI-EP, CDT, Chapter Director, Programs Chair*



#### 3rd Annual Chili Cook-Off & Chapter Awards

Tuesday, June 9, 2015 from 5:30-8:30 PM  
 Location Announced: Lucky Labrador - Northwest  
 All you chefs out there, start getting together your Chili Cook-off teams. Competition will be fierce to try and unseat the reigning CSI

Kraken Team in our 3rd Annual Chili Cook-off and Awards Night. It will be a fun night of music, good beer, scintillating chili, and stiff competition. [RSVP HERE >](#)

[DOWNLOAD TEAM INFORMATION HERE >](#)

## CSI PORTLAND EVENTS

### We Want to Hear From You

*Alicia Clark, CSI-EP, CDT, Chapter Director, Programs Chair*



Are you enjoying our monthly chapter meetings? Do you have a great idea for something you would like to learn more about? Is there something we are missing you would like to see added?

Over the past year, our Program Committee has been making some changes to our monthly chapter meetings. Now we want to hear from you. Please take five minutes to share your opinion on those changes and the new format. [TAKE SURVEY >](#)

Thank you for your participation. Your feedback is valuable and will help us provide programming that will best serve our membership.

### Save the Dates: Upcoming Chapter Meetings & Events

*Alicia Clark, CSI-EP, CDT, Chapter Director, Programs Chair*



JOIN OUR MAILING LIST

SUBMIT NEWS

#### In this Issue

[June Chapter Meeting: Annual Chili Cook-off and Awards](#)

[We Want to Hear from You: Meeting Survey](#)

[Save the Dates: Upcoming Chapter Meetings & Events](#)

[CDT Certification](#)

[Get Social](#)

[June Chapter Board Meeting Change](#)

[Job Posting](#)

[Upcoming CSI Conferences](#)

[Region Chapter Contacts](#)

[High Performance Building Design](#)

[2015 Lighting Trade Show](#)

[Professional Organizations](#)

[Allied Organizations](#)

Upcoming Events

# Architecture Scavenger Hunt

## Annual CSI Architectural Scavenger Hunt

July 14, 2015 from 5:30-7:30 PM

Grab a map, the clues, a compass, and comfortable shoes - it's our Fourth Annual Architectural Scavenger Hunt! This year we will be focused on History in the Yamhill District, the oldest part of the city. Come and test your architectural

knowledge! Each team will be given a map and clues about the each building's exterior facade and historical relevance. The Team with the most correct answers wins! This is a great event for meeting up with friends, or making some new ones. Meet us on the northeast corner of 2nd and Oak. After the Scavenger Hunt, the winner will be announced at Kells Irish Pub. [RSVP HERE >](#)



## Annual Golf Tournament

August 27, 2015

Lewis River Golf Course

[DOWNLOAD REGISTRATION FORM >](#)



## September Meeting: Tour of Park Avenue West Tower

September 8, 2015 from 5:00-7:30 PM

SW Park Avenue & SW Ninth Avenue

Park Avenue West will be a 30-story, 546,000 square foot mixed-use development in the heart of downtown Portland. It will include Class A Office space, residential units, and has already secured pre-construction LEED Platinum. More details coming soon.

## CERTIFICATION

# Congratulations CDT Certificate Holders

*Kathy Hemple, CSI, CCCA, Chapter Director, Certification Chair*



Our CDT classes for spring of 2015 are complete and we are proud to present our new Construction Documents Technologists for the greater Portland area!! Congratulations to the following for getting their CDT certificates:

**Doug Beens**, Drafter, Interface Engineering  
**Jeffrey Glanville**, Electrical Designer, Interface Engineering  
**Jessica Kaplan**, Electrical Designer, Interface Engineering  
**Kristin Glanville**, Electrical Designer, Interface Engineering  
**Thaniel Davis**, Technical Drafter, DeaMor Associates  
**Thomas Bertrand**, ACAD Manager, Professional Roof Consultants  
**Faron Hall**, Technical Specialist, Professional Roof Consultants  
**Alexei Holstein**, Project Manager, Veris Industries  
**Manuel Roth**, Project Manager, Alliance NW

These talented individuals attended our study classes at Ankrom Moisan Architects every Thursday for six weeks and learned everything they needed to not only pass the exam, but function at a higher level in the construction industry

The CDT exam (Construction Documents Technologist) Educations Program teaches a thorough overview of the design and construction process. It promotes an understanding of contractual agreements, roles, responsibilities, drawings and specifications, construction delivery systems and how to consistently develop organized, effective

## JUNE

### June 5

[High Performance](#)

[Building Design](#)

[Training](#)

AHRAE Oregon & NW Natural

### June 9

[3rd Annual CSI Chili](#)

[Cookoff & Chapter](#)

[Awards](#)

Lucky Labrador - Northwest

### June 10

[Portland Lights](#)

[Lighting Trade Show](#)

2 World Trade Center

### June 17

12:00 PM

Annual CSI Portland

Planning Meeting &

June Board Meeting

## JULY

### July 14

[July Chapter Meeting:](#)

[Architectural](#)

[Scavenger Hunt](#)

5:30-7:30 PM

## LATER

### August 27

[CSI Annual Golf](#)

[Tournament](#)

Lewis River Golf

Course

### Sept 30-Oct 3

[Construct 2015](#)

St. Louis, MO

## 2016

### May 18-22

Bi-Region Conference

Lake Tahoe

Thank You to our  
Industry Forum  
Committed  
Sponsors



construction documents.

Contact the committee if you have any questions or even if you want more information on what your options are. Kathy Hempel at [kathy@deamor.com](mailto:kathy@deamor.com) or Katie Kniesteadt at [KatieK@gbdarchitects.com](mailto:KatieK@gbdarchitects.com).

## SOCIAL MEDIA

### Get Social



CSI Members in Portland, across the country and beyond are sharing information on LinkedIn Discussion Groups, Twitter and blogs that are full of great information. We encourage you to connect with these professionals and expand your network. We learn something new from them each and

every day.

Featured blogs this month:

Definitions are necessary, but when a defined term is used for other purposes it can be difficult to say how it's being used.

[What's the difference between drawings and specifications?](#) by Sheldon Wolfe, FCSI, CCS

## MEMBERSHIP

### June Chapter Board Meeting Change

The regularly scheduled Portland Chapter Board Meeting has been rescheduled to June 17, 2015 at noon, which coincides with our annual planning meeting. Please email [Cherise Schacter](#), Board President, if you would like to attend or have any suggestions or ideas for our next fiscal year.

## CLASSIFIEDS

### Job Posting

**Director of Industry Development and Technical Services, Oregon** - The International Masonry Institute, a labor/management trade association, is seeking an architect or engineer in the Oregon to join its national team of construction professionals. The candidate will help designers, owners, and developers to better understand the performance and advantages of masonry in the building enclosure. This position requires the ability to organize, plan and implement a targeted effort to contact the appropriate decision makers and then provide the educational seminars, technical advice or plan review necessary to potentially increase the use of brick, block, tile, marble and related materials in key projects. The candidate will also participate in national team efforts to develop strategies and tools for specific topics such as restoration and sustainability. Experience in business development is a plus and strong communication skills are essential. This position offers excellent benefits including fully paid health insurance, pension and generous vacation and sick leave. Please send resumes to [imijobs@imiweb.org](mailto:imijobs@imiweb.org)

#### Engineer 3

Specialty: Construction Specification Engineer - Transmission Line Engineering



JOB #: 6962  
LOCATION: Vancouver, WA

Position Overview:

This full time contract position is located within the TEL (Transmission Line Engineering) group in Vancouver, WA. This position will be responsible for the development, expansion, and maintenance of standard construction specifications for transmission line, access road, and substation construction, and assisting project teams in assembling project-specific construction specifications based on the Standard Construction Specification Library. This position will work with personnel to develop a training program to support users of the Standard Construction Specification Library, and in developing new project specification tools. Email Beth Murray at [bmurray@ie4solutions.com](mailto:bmurray@ie4solutions.com).

## CSI NATIONAL NEWS

### Upcoming CSI Conferences



**Construct 2015**

Sept 30 - Oct 3, 2015

St. Louis, MO

[LEARN MORE >](#)



**Bi Region Conference**

May 18-22, 2016

Lake Tahoe

If you are interested in helping out please let one of your region leaders know.

### Institute and Region Chapters

[CSI National](#)

[CSI Northwest Region](#)

<b>Chapter Name</b>	<b>Contact</b>	<b>Phone</b>	<b>Monthly Meetings</b>
<a href="#">Big Sky</a>	Jan O'Brien	406-245-6363	Last Tuesday
<a href="#">Capital</a>	Chris Veit	503-390-0291	Third Thursday
<a href="#">Cook Inlet</a>	Mark Hughes	907-267-5163	Third Tuesday
<a href="#">Idaho</a>	Karen Morris	208-343-3620	Third Tuesday
<a href="#">Mt. Rainier</a>	Bob Kenworthy	253-931-4904	First Thursday
<a href="#">Puget Sound</a>	Andrew Estep	206-382-3393	Second Thursday
<a href="#">Spokane</a>	Georgia Spencer	509-328-2771	Second Thursday
<a href="#">Willamette Valley</a>	Alorie Mayer	541-485-0922	Last Thursday

## INDUSTRY NEWS

### High Performance Building Design

June 5, 2015 at 7:30-11:30 AM (or stay later for free lunch)

NW Natural

220 NW Second Avenue, Floor 4 Hospitality Suite, Portland, 97209

Cost: \$25 students / \$75 public employee ? \$100 all others

Instructor: Tom Lawrence, Ph.D., P.E., LEED AP

NW Natural has partnered with the Oregon Chapter of ASHRAE to offer local architects, engineers, government employees and students an opportunity to receive training on High-Performance Building Design

Training - Morning session approved by AIA and GBCI. Course participants will receive 3 PDHs/AIA LUs or .3 CEUs for this course.

Class Session: This course will present applications of new technologies and design concepts to achieve the goal of high-performance buildings, including net-zero or nearly net-zero energy buildings. The course discusses exactly what a high-performance building is from the perspective of various stakeholders. High performance is more than just energy efficiency, and this course addresses issues and methods for providing high performance in areas beyond energy efficiency, such as indoor environmental quality. The course also describes future trends toward high-performance buildings across the globe, and quickly summarizes how ASHRAE Standards (existing and those in development) address these topics. [DOWNLOAD INVITATION >](#)

---

## 2015 Portland Lights Lighting Trade Show

June 10, 2015 from 8 AM to 7 PM

2 World Trade Center, 121 SW Salmon Street, Portland, 97204

Attend Portland Lights Lighting Trade Show & Educational Classes to learn about the latest in efficient lighting and controls and see new and innovative lighting products! CSI Portland Chapter will be represented at the event, so be sure to stop by our booth. [LEARN](#)

[MORE >](#)

---

## Professional Organizations

[Construction Specifications Canada \(CSC\)](#)

[Construction Specifications Institute \(CSI\)](#)

[Specifications Consultants in Independent Practice \(SCIP\)](#)

---

## Allied Organizations

Got an addition to the list? Send it to [portlandcsi@gmail.com](mailto:portlandcsi@gmail.com).

**Design**

American Institute of Architects - Portland (AIA)  
American Society of Interior Designers (ASID)  
Cascadia Region Green Building Council (GBC)  
National Association of Office and Industrial Properties - Oregon (NAIOP)  
Society for Marketing Professional Services - Oregon (SMPS)  
Architectural Foundation of Oregon (AFO)

**Technical**

American Society of Mechanical Engineers - Oregon (ASME)  
American Society of Plumbing Engineers - Portland Chapter  
Building Owners and Managers Association International - Oregon (BOMA)  
International Facilities Management Association - Oregon & SW Washington Chapter (IFMA)  
Portland Building Enclosure Council (BEC)

**Construction**

Associated General Contractors - Oregon-Columbia Chapter (AGC)  
Construction Management Association of America - Oregon (CMAA)  
Design-Build Institute of America - Northwest Region (DBIA)  
Home Builders Association of Metropolitan Portland (HBA)  
Oregon Remodelers Association (ORA)  
National Women in Construction - Portland Chapter #54 (NAWIC)



# The Predicator

## IN THE SPOTLIGHT

### July Chapter Meeting: Fourth Annual Scavenger Hunt

*Alicia Clark, CSI-EP, CDT, Chapter Director, Programs Chair*



Tuesday, July 14, 2015 at 5:30pm-7:30pm  
Yamhill District, Corner of SW 2nd and Oak

Grab a map, the clues, a compass, and comfortable shoes - it's our Fourth Annual Architectural Scavenger Hunt! This year we will be focused on History in the Yamhill District, the oldest part of the city. Come and test your architectural knowledge! Each team will be given a map and clues about the each building's exterior facade and historical relevance. The Team with the most correct answers wins! This is a great event for meeting up with friends, or making some new ones. Meet us on the northeast corner of 2nd and Oak. After the Scavenger Hunt, the winner will be announced at Kells Irish Pub.

[RSVP HERE >](#)

## CSI PORTLAND EVENTS

### Thoughts & Tweets from the Tri Region Conference

*Ellen Onstad, CSI, CDT, President-Elect*

Leadership is not a spectator sport - the pin from a few years ago stands true today. If you don't attend events, if you don't speak with people, if you don't interact, you don't get your membership money's worth, in other words return on investment (ROI).

#### **So what have you done for your chapter lately?**

The Tri Region Conference this year was held in San Diego California, The regions that attended were from the Northwest, West and Southwest (so in other words - everybody on the left half of the US) having attended the Northwest Region conferences for the past few years it was interesting to get a perspective from other chapters in the country.

For example, some chapters have as many members in their chapter as we have come to meetings. Portland chapter remains one of the largest in the Nation. (As of today our numbers are 267 - the next highest is 303 or so) our retention rate has improved due to the



JOIN OUR  
MAILING LIST

SUBMIT NEWS

#### In this Issue

[July Chapter Meeting:  
Fourth Annual  
Scavenger Hunt](#)

[Thoughts & Tweets  
from the Tri Region  
Conference](#)

[Save the Dates:  
Upcoming Chapter  
Meetings & Events](#)

[Get Social](#)

[Drum Roll Please](#)

[Membership](#)

[Upcoming CSI  
Conferences](#)

[Region Chapter  
Contacts](#)

[QA/QC Manager  
Wanted](#)

[Professional  
Organizations](#)

[Allied Organizations](#)

#### Upcoming Events

**July 14**  
[July Chapter Meeting:  
Architectural  
Scavenger Hunt](#)  
5:30-7:30 PM

diligent efforts of the membership committee. We average 50 to 75 people at our chapter meetings and are increasing our involvement in the industry.

While in San Diego I attended the leadership track and while I received a lot of information and interest, it was exciting to share with others what we are doing here in Portland. For example, in one of the seminars on students and membership, Kathy and I mentioned the CDT Student Scholarship program. That was met with lots of interest and excitement due to first - involving the young professionals in our chapter, but also increasing the number and passing rate for the CDT exam. Retention for these individuals can be a challenge due to the cost and support of their employers. Membership (as we know) is not cheap and unless employers see a return on investment there may not be support in future events.

Some chapters cycle thru the same members as leaders multiple times. We (the Portland Chapter Board) are always looking for new leaders; if you have interest please let us know.

## Save the Dates: Upcoming Chapter Meetings & Events

*Alicia Clark, CSI-EP, CDT, Chapter Director, Programs Chair*



### Annual Golf Tournament

August 27, 2015  
Lewis River Golf Course

[DOWNLOAD REGISTRATION FORM >](#)



### September Meeting: Building Tour

September 8, 2015 from 5:00-7:30 PM  
We are busy working out the logistics. More details coming soon.

## SOCIAL MEDIA

### Get Social



CSI Members in Portland, across the country and beyond are sharing information on LinkedIn Discussion Groups, Twitter and blogs that are full of great information. We encourage you to connect with these professionals and expand your network. We learn something new from them each and

every day.

Featured blogs this month:

What's worse? Under-specifying or over-specifying? It's a trick question; one is no better than the other. We'll look at under-specifying now, and over-specifying next time.

[Under-specifying: Less is not always more](#) by Sheldon Wolfe, FCSI, CCS

## MEMBERSHIP

### Drum roll please

## AUGUST

### August 27

[CSI Annual Golf Tournament](#)  
Lewis River Golf Course

## LATER

### Sept 30-Oct 3

[Construct 2015](#)  
St. Louis, MO

## 2016

### May 18-22

Bi-Region Conference  
Lake Tahoe

Thank you to our  
Industry Forum  
sponsors





We are proud to recognize our own John Lape who became a Fellow in CSC (Construction Specifications Canada) this May at the CSC Convention in Manitoba. John joins only one other CSI member who has obtained Fellow in both CSI and CSC. Congratulations John! We are all very proud.



We are also proud to announce that our current Chapter President, Cherise Lakeside, will be receiving an Institute Communications Awards at CONSTRUCT in St. Louis in September.

---

## Membership

### Renewed and New Members of Portland Chapter March 2015

- Bryon Allen, CSI; W.R. Meadows; member since 2008
- Tom Anderson, CSI; Assa Abloy DSS; member since 2003
- Jeffrey Barr, CSI, CCCA, AIA, NCARB; CASE Forensics; member since 2006
- Heidi Bertman, CSI; ZGF Architects; member since 2014
- Dan Elliott, CSI; Spec Products, Inc.; member since 2000
- Stephen Haner, CSI; Mid -Valley Glass and Millwork; member since 2007
- Russell Harrison, CSI; Window Tech, Inc.; member since 2014
- David Haug, CSI, AIA; Insulfoam; member since 2005
- Vaughn Hodgins, CSI; Premier Sales; member since 2015 - **NEW**
- Karl Michels, CSI; Knauf insulation; member since 2014
- Ellen Onstad, CSI, CDT; Dodge Data & Analytics; member since 1995
- D.J. Paul, CSI; Centria; member since 2015 - **NEW**
- Tim Shinnars, CSI; Da-Lite Screen Company; member since 2007
- Kourtney Strong, CSI, AIA, NCARB; BLRB Architects, p.s.; member since 2014
- Isaac Tevet, CSI, AIA; Ankrom Moisan Associated Architects; member since 1989
- Jeremy Tunney, CSI; Class A Roofing Consultants; member since 2012
- Michael Watson, CSI, CDT; Pacific Architectural Products; member since 1990

### Renewed and New Members of Portland Chapter CSI February 2015

- Keith Blodgett, CSI, CDT; Building Material Specialties; member since 1994
- David Chatburn, CSI; C.R. Laurence Co; member since 2007
- Mike Fletcher, CSI; D-Seven NW; member since 2015 - **NEW**
- Alexei Holstein, CSI-EP, PMP; Veris Industries; member since 2013
- Clifford Hood, PE, CSI; Hood-McNees, Inc.; member since 1996
- Jeff Humphreys, CSI, CDT, LEED AP; Group MacKenzie; member since 2004
- Geoffrey Jenks, CSI-EP; Interface Engineering; member since 2015 - **NEW**
- J. Knott, CSI; member since 1983
- Edward Macsisak, CSI; Spacesaver Specialists, Inc.; member

- since 2005
- Scott Martin, CSI, CDT; Tremco Inc. Vulkem Paraseal; member since 1995
- Joseph Mecalis, BA, CSI, CDT; Myhre Group; member since 2007
- Bob Mohr, CSI; Morin - A Kingspan Group Company; member since 2015 - **NEW**
- Brian Nelson, CSI, CDT, LEED AP; member since 2010
- Adam Owens, CSI-EP; Akzo Nobel Powder Coatings; member since 2015 - **NEW**
- Mark Reeves, CSI; Hanset Corp.; member since 1999
- Danny Sullivan, CSI; Sullivan Architectural Products; member since 2006

#### Renewed and New Members of Portland Chapter CSI January 2015

- Douglas Beens, CSI-EP; Interface Engineering; member since 2015 - **NEW**
- Christopher Bennett, CSI, CDT; HUSQVARNA Construction Products; member since 2014
- Erica Bitterman-Ryon, CSI; Precision Images; member since 2000
- Eric Bressman, CSI, CCCA; Ankrom Moisan; member since 2012
- Thaniel Davis, CSI; Deamor Associates; member since 2015 - **NEW**
- Colin Doherty, CSI, CCS; Port of Portland; member since 2009
- Devin Follingstad, CSI, CDT; Carleton Hart Architecture; member since 2007
- Jeff Glanville, CSI; Interface Engineering; member since 2015 - **NEW**
- Kristin Glanville, CSI; Interface Engineering; member since 2015 - **NEW**
- Gregory Hranac, RA, CSI, CCS; U.S. Fish & Wildlife Service; member since 1998
- Jessica Kaplan, CSI-EP; Interface Engineering; member since 2015 - **NEW**
- Katie Kniestadt, CSI, CDT; GBD Architects; member since 2013
- Steven McBride, CSI; Professional Roof Consultants, Inc.; member since 2002
- Bryan Ninneman, CSI, CDT; Creative Design Concepts; member since 2015 - **NEW**
- Jerry Pozo, CSI, CDT, BS; BMI Products of Northern CA; member since 1995
- Mark Schneider, CSI; CSAF LLC; member since 1997
- Amy Tacke, CSI, ASID, LEED AP; Miller Paint Co.; member since 2011
- Robert Temple, CSI; Hafele America Co.; member since 2012
- Randy Tessman, CPA, CSI, CDT; Benjamin Moore Paints; member since 1995
- Erl Thorgalsen, CSI; RTB Company; member since 1998
- Michael Thrailkill, CSI, CDT, AIA, LEED AP, NCARB; m.thrailkill.architect.llc; member since 2004
- Scott Tice, CSI; Tice Industries, Inc.; member since 2002
- Wendi Ziegler, CSI; Inpro; member since 2015

## CSI NATIONAL NEWS

### Upcoming CSI Conferences





St. Louis, MO

[LEARN MORE >](#)



**Bi Region Conference**

May 18-22, 2016

Lake Tahoe

If you are interested in helping out please let one of your region leaders know.

## Institute and Region Chapters

CSI National

CSI Northwest Region

<b>Chapter Name</b>	<b>Contact</b>	<b>Phone</b>	<b>Monthly Meetings</b>
<u>Big Sky</u>	Jan O'Brien	406-245-6363	Last Tuesday
<u>Capital</u>	Chris Veit	503-390-0291	Third Thursday
<u>Cook Inlet</u>	Mark Hughes	907-267-5163	Third Tuesday
<u>Idaho</u>	Karen Morris	208-343-3620	Third Tuesday
<u>Mt. Rainier</u>	Bob Kenworthy	253-931-4904	First Thursday
<u>Puget Sound</u>	Andrew Estep	206-382-3393	Second Thursday
<u>Spokane</u>	Georgia Spencer	509-328-2771	Second Thursday
<u>Willamette Valley</u>	Alorie Mayer	541-485-0922	Last Thursday

### CLASSIFIEDS

## QA/QC Manager Wanted

We are seeking a high-energy, technically-oriented architect to serve as QA/QC Manager in our Portland office.

The successful candidate will have 10+ yrs. extensive experience with design and construction of large commercial and multi-family residential wood frame, structural concrete and steel frame buildings with an emphasis on envelope detailing. Primary responsibilities include: Reviewing building plans, specifications, and details for constructability and quality assurance during the design phase of projects; facilitating coordination of plans, specifications, and details for quality assurance and quality control during construction phase; reviewing installation/ workmanship in progress on jobsites; planning, promoting and organizing training activities related to building quality. The QA Manager is also responsible for playing an active role in the evaluation and promotion of green building systems and energy efficiency strategies during the design phase. [READ MORE >](#)

### INDUSTRY NEWS

## Professional Organizations

Construction Specifications Canada (CSC)

## Allied Organizations

Got an addition to the list? Send it to [portlandcsi@gmail.com](mailto:portlandcsi@gmail.com).

### **Design**

American Institute of Architects - Portland (AIA)  
American Society of Interior Designers (ASID)  
Cascadia Region Green Building Council (GBC)  
National Association of Office and Industrial Properties - Oregon (NAIOP)  
Society for Marketing Professional Services - Oregon (SMPS)  
Architectural Foundation of Oregon (AFO)

### **Technical**

American Society of Mechanical Engineers - Oregon (ASME)  
American Society of Plumbing Engineers - Portland Chapter  
Building Owners and Managers Association International - Oregon (BOMA)  
International Facilities Management Association - Oregon & SW Washington Chapter (IFMA)  
Portland Building Enclosure Council (BEC)

### **Construction**

Associated General Contractors - Oregon-Columbia Chapter (AGC)  
Construction Management Association of America - Oregon (CMAA)  
Design-Build Institute of America - Northwest Region (DBIA)  
Home Builders Association of Metropolitan Portland (HBA)  
Oregon Remodelers Association (ORA)  
National Women in Construction - Portland Chapter #54 (NAWIC)

Hi, just a reminder that you're receiving this email because you have expressed an interest in Portland Chapter CSI. Don't forget to add portlandcsi@gmail.com to your address book so we'll be sure to land in your inbox!

You may [unsubscribe](#) if you no longer wish to receive our emails.

AUGUST 2015

VOL 55 / NO 8



## The Predicator

### IN THE SPOTLIGHT

## Portland CSI Golf Tournament SOLD OUT

*Erica Bitterman-Ryon, CSI, Golf Chairperson*



**Thursday, August 27, 2015 at 10 AM to 6 PM  
Lewis River Golf Course**

Did you know that proceeds from our Golf Tournament go directly back to our members in the form of scholarships to obtain all levels of certification? We support scholarships for CDT, CCS, CCCA and CCPR!

### **Sponsorship opportunities still available!**

We have sold out our teams but still have a few sponsorships available including our Platinum level. Check it out at the link below and consider sponsoring this great event and networking with a full slate of A/E/C professionals on the golf course.

This year's 2015 golf tournament is turning out to be one of the best years ever. It is so nice to have a packed house again, and we will be playing at the beautiful Lewis River Golf Course in Woodland, Washington. The great staff at Lewis River have taken care of CSI for many years and they help us put on a great tournament. [SPONSOR NOW >](#)

### **500 toys or bust**

Also, this is the start of the CSI Toy Drive for Randall's Children Hospital. We have a lofty goal of collecting 500 toys and items for teens this year. We only reached half of this goal last year and we aim to "go big or go home" and reach the top. We would love your help with donations and we will accept cash and go shopping for you if you can't fit it into your busy schedule. Show up with a toy at the golf course and throughout the year at any CSI event. 10,000 Children go through Randall's Children Hospital every year. Each sick child has a little bit brighter day with the toys and goodies they are given when they get there. It gives them some comfort when they can't go home. Please help us reach this goal. I know we can do this.



JOIN OUR  
MAILING LIST

SUBMIT NEWS

### In this Issue

[Portland CSI Golf Tournament](#)

[President's Message](#)

[Portland Chapter Annual Report](#)

[Board Planning Session Successful](#)

[July Scavenger Hunt Recap](#)

[Save the Dates: Upcoming Chapter Meetings & Events](#)

[Hot Fun, Summer in the City](#)

[Without You, We'd be Lonely](#)

[Fall Registration Open](#)

[Get Social](#)

[Upcoming CSI Conferences](#)

[Region Chapter Contacts](#)

[Professional](#)

## Huge thanks to our golf sponsors this year

Advanced Technology Group - Gary Frayn  
AkzoNobel Coatings Inc. - Adam Owens  
All Weather - Fred Larson  
Ameriprise Financial Services Inc - Briana Hinchliffe  
ARC of Oregon - Kaye Kloster  
Assa Abloy - Wesley Campos  
Atlas Supply - Cody Hakala  
Bain Associates - John Hermann & Chris Irwin  
Cambria-FloForm - Linda Joens  
Carlson Testing - Keith Gauvin  
Cosella Dorken - Marc Sandin  
DeaMor Associates - Mark Atteridge  
Dodge Data & Analytics - Ellen Onstad  
Forbo Flooring - Cherie McNabb  
Fortifiber - Frank Mendez  
Halfen USA - Nick Wutzke  
Harper Houf Peterson Righellis - Kaylee Houf  
Hoffman Construction - Derrick Beneville  
Ideate- Tony DiVincenzo  
Inline Commercial Construction - Jon Sandquist  
John Lape Architects - John Lape  
Kingspan - Bill Sandahl  
Laird Plastics - Leslie Case  
Meier Engineering - Zack Erz  
Miller Paint - Mike Murphy  
Mutual Materials - Mike Baker  
NW Wall & Ceiling Bureau -John Killin  
Oldcastle Building Envelope - Jeff Rubino  
PAE Engineering - Dave Williams  
Precision Countertops - Joe Jenkins  
Precision Images - Erica Bitterman-Ryon  
Professional Roof Consultants - Steven McBride  
Ross & Associates - Tim Cockburn  
Scott Edwards Architects  
SIKA - Serge Alexandre  
Skoler Building Resources - Mark Miller  
Skanska USA - Matt Hadfield  
STO Corp - Dan Crates  
The PPI Group - Ian Donovan  
TOTO USA, INC - Steve Mastrandrea  
Walsh Construction  
Wausau Window & Wall Systems- Brad Glauser  
Willamette Graystone - Dave Ingraham  
Woodfold - Justin Norman  
  
W.R. Meadows - Bryon Allen

## PRESIDENT'S MESSAGE

### President's Message

*Cherise Lakeside, CSI, CDT, Chapter President*



I am particularly proud to announce that Portland CSI will again be receiving an Outstanding Chapter Commendation at this year's convention. Our leadership has been working hard and I am excited to see them recognized at a National level. [READ MORE >](#)

[Organizations](#)

[Allied Organizations](#)

---

Upcoming Events

**August 27**

[CSI Annual Golf](#)

[Tournament](#)

Lewis River Golf

Course

**SEPTEMBER**

**Sept 30-Oct 3**

[Construct 2015](#)

St. Louis, MO

**2016**

**May 18-22**

Bi-Region Conference

Lake Tahoe

---

## Portland Chapter Annual Report

*Corey Morris, AIA, CSI, Chapter Secretary*

In accordance with the bylaws of the Chapter, an annual report of the Chapter's activities for the 2014-2015 fiscal year has been prepared and can be viewed on the website. Visit the website and click on "Chapter Board Meeting Minutes" on the left-hand side of the page. [VIEW HERE >](#)

---

## Board Planning Session Successful

*Cherise Lakeside, CSI, CDT, Chapter President*

June marked our annual Board Planning Retreat. I am excited and honored to be embarking on my second term as Portland CSI President. I am also excited to welcome **Marty Houston** of Walsh Construction and **Leslie Case** of Laird Plastics to our Board of Directors. We have a crack team from every area of A/E/C on our board this year (architects, engineers, contractors, product representatives, etc.) which only provides more variety and depth to our planning efforts.

At our planning session, the Board worked on setting goals and objectives for the upcoming year to meet our member's needs. Our top priorities this year center around the following. We have already started actively working on these goals.

1. Providing value-added education
2. Embracing and accommodating our young professional community
3. Reaching out to our industry partners
4. Doing a better job of spreading the message of CSI, still the best kept secret in the industry. (We aim to change that.)

### **Introducing our new chair of Emerging Professionals Committee**

One of the first orders of business was to find the perfect fit as Chair of our Portland Emerging Professionals Committee. We are excited to welcome Geoff Jenks of Interface Engineering to the fold. Not only will Geoff bring an engineering perspective to our planning but he is also a young professional (YP) who is active in the A/E/C YP community and passionate about helping CSI improve their programs, so that all of our professionals are equally represented. We will also be combining the meetings of our Education Committee and YP Committee to share resources and be sure our YP Committee has a voice in our education events. I am particularly excited about this and know this group is going to knock it out of the park.

### **Partnering with others a key to growth**

Another goal has been to reach out to our Industry Partners to see how we can share resources and knowledge to improve the programs and education for our members. In the last couple months, we have reached out and/or met with leadership at AIA, DBIA, ASHRAE, AFO, Estimators and BEC. Planning for

some joint events is already in the works and more is on the way. The best way to grow in this business is to share knowledge and we intend to make sure our members get as much of that as they need. Keep your eye out because we have a lot of great things on the way. A special thank you to the lovely and charming Jane Jarrett from the Architecture Foundation of Oregon for joining us at our annual Scavenger Hunt. AFO does a lot of wonderful things but their Architects in Schools program is unparalleled. They will be looking for volunteers soon and I hope to see some of you in those classrooms.

## CSI PORTLAND EVENTS

### July Scavenger Hunt Recap

*Cherise Lakeside, CSI, CDT, Chapter President*



We had a great time in the warm weather last month at our annual Architectural Scavenger Hunt! Three teams raced to identify 12 buildings in the historic Yamhill District, with only a few clues to guide the way. Congratulations to team "Those aren't Artichokes" who came in first with a perfect 12 out of 12 score, and a BIG "Thank you!" to Leslie Case and Laird Plastics for hosting the happy hour afterwards! Make sure to mark your calendars for next July 12th for a fun, free event!

---

### Save the Dates: Upcoming Chapter Meetings & Events

*Alicia Clark, CSI-EP, CDT, Chapter Director, Programs Chair*



#### **September Meeting: Building Tour Portland Water Bureau Interstate Maintenance & Operations Facilities**

September 8, 2015 from 4:30 - 7:30 PM

Join Portland Water Bureau / MWA Architects/ KPFF / ABHT and Hoffman Construction for a tour of the Interstate Renovation Project. We will be touring a new state of the art campus for the Portland Water Bureau campus. This Staged Renovation/New Construction of a Superfund site for the various departments involved in the City's Water Quality and water departments is unique to the Northwest.

Tentative Tour stops include Contaminated Materials and existing site - Storm water Management and Pervious paving - LEED (green roof / Solar Panels) - MWESB Workforce - Programming/Phasing and Product selection. [LEARN MORE >](#)

#### **Save the Date**

Make sure to keep the second Tuesday of the month open! We are busy working out the final details for our fall chapter meetings. Keep an eye out for more information to come!

---

### Hot Fun, Summer in the City

*Cherise Lakeside, CSI, CDT, Chapter President*

Historically, Portland CSI has reserved the summer months to

lighten it up a little and have some fun. This year is no different with another successful and entertaining Chili Cook-Off in June and the always fun and competitive Architectural Scavenger Hunt in July. This month, we will round out our 'summer break' with our sold out golf tournament at Lewis River Golf Course on the 27th of August. It is encouraging to see the activity and rising attendance at Portland CSI events and programs. This is indicative of the hard work and dedication of our leaders to take it to another level and be the Chapter to emulate. Please, if you haven't joined us lately, I encourage you to attend a chapter meeting or program and see some of the great changes and fresh ideas happening at Portland CSI.

Now, just because we have been having some fun this summer does not mean that we have not been hard at working planning and getting organized for the upcoming year. All of our committees have been busy gearing up for what will be a banner year at Portland CSI. Look for more exciting opportunities coming this fall.

## KRAKEN COMMITTEE

### Without You, We'd be Lonely

*Cherise Lakeside, CSI, CDT, Chapter President*



This month, CSI Portland would like to thank our amazing members. Without you, the depth of the knowledge sharing that makes CSI unique could never happen. If you have not attended a meeting or education session in a while, we urge you to come check out all the exciting changes we have been working hard to implement in our Chapter.

The Portland CSI Kraken Committee is a group of dedicated, positive, forward-thinking members with a "go big or go home" attitude. The only requirement to call yourself a CSI Kraken is a willingness to adopt this attitude and help take our Chapter to the next level. No meetings, no dues - just a willingness to pitch in, think outside the box and help make it happen. This movement has spread across the country and we are proud to know that CSI Kraken are making change all over the United States. [WANT TO KNOW MORE >](#)

## CERTIFICATION

### Fall Registration Open

*Kathy Hempel, CSI, CCCA, Certification Chair*

Registration for fall certification exams has opened. If you are considering obtaining your CDT, CCS, CCCA or CCPR, now is the time to get signed up. [LEARN MORE HERE >](#)

Contact our Portland Certification Committee if you have any questions:

## SOCIAL MEDIA

### Get Social



CSI Members in Portland, across the country and beyond are sharing information on LinkedIn Discussion Groups, Twitter and blogs that are full of great information. We encourage you to connect with these professionals and expand your network. We learn something new from them each and every

day.

Featured blogs this month:

[What does the future hold for specifiers?](#) by Sheldon Wolfe, FCSI, CCS

## CSI NATIONAL NEWS

### Upcoming CSI Conferences



#### Construct 2015

Sept 30 - Oct 3, 2015

St. Louis, MO

This year, to be held in St Louis, Missouri from September 30 to October 3rd, 2015. If last year was any indication, this will be a wonderful week of networking, education, sightseeing and fun along with catching up with old and new friends. Also follow the planning and conversation on Twitter by typing in the hashtags #CONSTRUCT or #CSINIGHTOUT [LEARN MORE >](#)

#### First Inaugural Young Professionals Day at Construct

If you are 35 and under, you are a young professional and don't want to miss this fabulous opportunity for a full day of events strictly for young A/E/C professionals for an amazing low price. Not only can you attend young professional day for only \$70, but that pass is also for the full education program at CONSTRUCT following YP Day. This is the most amazing deal ever, but spots are very, very limited and going fast. Check out all the details here and get signed up quick! [LEARN MORE >](#)



#### Bi Region Conference

May 18-22, 2016

Lake Tahoe

If you are interested in helping out please let one of your region leaders know.

## Institute and Region Chapters

[CSI National](#)

[CSI Northwest Region](#)

Chapter Name	Contact	Phone	Monthly Meetings
<a href="#">Big Sky</a>	Jan O'Brien	406-245-6363	Last Tuesday



<u>Capital</u>	Chris Veit	503-390-0291	Third Thursday
<u>Cook Inlet</u>	Mark Hughes	907-267-5163	Third Tuesday
<u>Idaho</u>	Karen Morris	208-343-3620	Third Tuesday
<u>Mt. Rainier</u>	Bob Kenworthy	253-931-4904	First Thursday
<u>Puget Sound</u>	Andrew Estep	206-382-3393	Second Thursday
<u>Spokane</u>	Georgia Spencer	509-328-2771	Second Thursday
<u>Willamette Valley</u>	Alorie Mayer	541-485-0922	Last Thursday

## INDUSTRY NEWS

### Professional Organizations

Construction Specifications Canada (CSC)  
Construction Specifications Institute (CSI)  
Specifications Consultants in Independent Practice (SCIP)

### Allied Organizations

Got an addition to the list? Send it to [portlandcsi@gmail.com](mailto:portlandcsi@gmail.com).

#### Design

American Institute of Architects - Portland (AIA)  
American Society of Interior Designers (ASID)  
Cascadia Region Green Building Council (GBC)  
National Association of Office and Industrial Properties - Oregon (NAIOP)  
Society for Marketing Professional Services - Oregon (SMPS)  
Architectural Foundation of Oregon (AFO)

#### Technical

American Society of Mechanical Engineers - Oregon (ASME)  
American Society of Plumbing Engineers - Portland Chapter  
Building Owners and Managers Association International - Oregon (BOMA)  
International Facilities Management Association - Oregon & SW Washington Chapter (IFMA)  
Portland Building Enclosure Council (BEC)

#### Construction

Associated General Contractors - Oregon-Columbia Chapter (AGC)  
Construction Management Association of America - Oregon (CMAA)  
Design-Build Institute of America - Northwest Region (DBIA)  
Home Builders Association of Metropolitan Portland (HBA)  
Oregon Remodelers Association (ORA)  
National Women in Construction - Portland Chapter #54 (NAWIC)

Hi, just a reminder that you're receiving this email because you have expressed an interest in Portland Chapter CSI. Don't forget to add portlandcsi@gmail.com to your address book so we'll be sure to land in your inbox!

You may [unsubscribe](#) if you no longer wish to receive our emails.

SEPTEMBER 2015

VOL 55 / NO 9



# The Predicator

## IN THE SPOTLIGHT

### September Chapter Meeting Portland Water Bureau Interstate Operations Building Tour

*Alicia Clark, CSI, Programs Chair*



**Tuesday, September 8th from 4:30 to 7:30 PM**

Join Portland Water Bureau, MWA Architects, KPFF Consulting Engineers, ABHT Structural Engineering, Interface Engineering, and Hoffman Construction for a tour of the Interstate Renovation Project. We will be touring the new state-of-the-art campus for the Portland Water Bureau. This staged renovation/new construction of a superfund site for the various departments involved in the City's Water Quality and water departments is unique to the Northwest. 1.5 HSW learning units available. [LEARN MORE OR REGISTER HERE >](#)

## PRESIDENT'S MESSAGE

### President's Message

*Cherise Lakeside, CSI, CDT, Chapter President*



CONSTRUCT IS COMING. Join me and other Portland CSI members at the annual CSI Convention in St. Louis from September 30th to October 3rd. I am very excited to be leading the first ever, all day program for Young Professionals as well as participating on the lunchtime "Practice Makes Perfect"

Pecha Kucha session. This year is jam packed with excellent education opportunities and a ton of fun events. There is still time to register and you do not want to miss this! As I am also the official CONSTRUCT blogger for 2015, you can read more about why you should attend here:

<http://bit.ly/1UkmAIC>

Portland CSI has had a summer of fun with the Chili Cook Off in June, the Architectural Scavenger Hunt in July, and our



JOIN OUR  
MAILING LIST

SUBMIT NEWS

EDIT MY  
EMAIL  
PREFERENCES

#### In this Issue

[Portland CSI Golf  
Tournament](#)

[President's Message](#)

[Portland Chapter Annual  
Report](#)

[Golf Tournament Recap](#)

[We Need Speakers](#)

[Save the Dates:  
Upcoming Chapter  
Meetings & Events](#)

[Certification](#)

[Kraken Committee](#)

[Fall Learning Ahead](#)

[Get Social](#)

[Membership](#)

[Upcoming CSI  
Conferences](#)

[Region Chapter Contacts](#)

sellout Golf Tournament in August (which was amazing - my apologies for anyone who I attacked with the Super Soaker!). As is always the case, summer fun ends and it is time to get down to business. Our new board spent a great five-hour planning session setting goals and objectives for the new fiscal year which runs July 1st through June 30th. Our committees are already hard at work getting programs in place to meet those goals. We would love to have you involved (which translates into "Don't make me come looking for you!")

What makes Portland CSI one of the most active and dynamic chapters in the country is, hands down, the people. More hands make less work and more brains equal programs with depth and many perspectives. Please consider getting involved.

We are ready to rock n' roll at Portland CSI this year and I am hoping to see you all at meetings, educational sessions and fun events. If you haven't visited in a while, please come back and join us! Happy September! #CSIKraken

## CSI PORTLAND NEWS

### Portland Chapter Annual Awards

*Cherise Lakeside, CSI, CDT, Chapter President*



Every June, we take a little time to honor our members who really work their tails off to keep this Chapter viable, exciting and full of great programs. This year was no different. Check out our list of our amazing individuals who go above and beyond every day. I will

never find the right words to acknowledge their hard work and amazing commitment. [VIEW ALL AWARD RECIPIENTS HERE >](#)

### Golf Tournament Recap

*Erica Bitterman-Ryon, CSI, Golf Chair*



WOW sums up another great year of CSI golf. We had a sold out event of 144 golfers, 16 tee boxes manned, lots of donation to kick off our toy drive, and a beautiful day on the course. With a full course, play naturally is a bit slower than normal, but it provided an excellent opportunity for networking, playing

games at each tee box, and enjoying prizes and snacks to keep things fun. This was an incredible year.



#### Great start to our annual toy drive

PPI started our toy drive off with a BANG, collecting items in advance of the event from their entire office. What a way to start our

annual toy drive. We will be collecting toys until the end of the year at every CSI event. The toys will be donated to Legacy Randall's Children's Hospital where 10,000 children are admitted with a serious illness. These toys help eliminate some of the fear and more importantly, put a smile on their face. We have a goal of 500 toys by our December holiday

[Professional](#)

[Organizations](#)

[Allied Organizations](#)

#### Upcoming Events

##### September 8th

[Chapter Meeting: Portland Water Bureau Tour](#)

##### Sept 30-Oct 3

[Construct 2015](#)  
St. Louis, MO

##### November 10th

Fall New Member Orientation

##### November 10th

[Chapter Meeting: Portland Japanese Garden Expansion Project](#)

##### December 8th

Chapter Meeting: OHSU Master Plan

#### 2016

##### May 18-22

Bi-Region Conference  
Lake Tahoe

#### THANK YOU GOLF 2015 SPONSORS!

Beverage/Dinner/  
Lunch Sponsors



event. Please help us meet that goal this year.

### To our fabulous sponsors

Without you, there would be no tournament. Thank you for taking the time to come out, staff a tee box, meet some great people, and enjoy the afternoon. We truly appreciate all of your effort to plan fun games and feed us with delicious snacks along the course. No hangry golfers on our watch because of you.

Last but not least, hearty gratitude goes out to those wonderful, happy, cheery golfers, that obey my one and only rule, have fun!!! Thank you for having fun with us. This tournament is about networking, enjoying each others company, and raising money for our scholarship program. I sincerely hope you will all come back next year and bring your colleagues, your clients--whomever--and play a round.

Sincerely,

CSI Golf Committee

Erica Bitterman-Ryon, Precision Images; Tony Fennig, PKA Architects; Fred Larson, All Weather; Ellen Onstad, Dodge Data Analytic, Susie Sirovatka, Professional Roof Consultants; and Chris Irwin, Bain Associates

## We Need Speakers

*Cherise Lakeside, CSI, CDT, Chapter President*



No, not those kind of speakers! We need presenters. Do you have a great topic that you can share with our members? Do you have an idea for a dynamic program?

Both our Programs Committee and our Education Committee are looking for speakers who can teach our members and

share valuable information on the latest and greatest new technologies, best practices and anything else that is valuable to help us do our day-to-day work. The Chapter is set up to get the courses approved for AIA credit and all presentations/courses need to qualify as a learning session. Please contact the chapter at [portlandcsi@gmail.com](mailto:portlandcsi@gmail.com) if you have content to share.

## Save the Dates: Upcoming Chapter Meetings & Events

*Alicia Clark, CSI-EP, CDT, Chapter Director, Programs Chair*

**Tuesday, October 13, 2015 at 5:30-8:00 PM**

Topic to be announced soon...



**Tuesday, November 10, 2015 4:30-5:30 PM**  
**New Member Orientation follow by**  
**Portland Japanese Garden Expansion Project**

The Portland Japanese Garden has unveiled a \$33.5 million expansion plan that will

include three new LEED certified buildings as part of what's called a Cultural Village, as well as seven new garden spaces, while only increasing its footprint by 11,328 square feet. The inspired design



Hole Sponsors



Portland • Seattle



blends traditional Japanese design with the spirit of the Pacific Northwest. Tokyo based Kengo Kuma and Associates developed the vision and design for the expansion of the Portland Japanese Garden, with THA Architecture and Walker Macy Landscape Architects serving as the local partners. [LEARN MORE HERE >](#)



**December 8, 2015**  
**OHSU Master Plan Presentation**

Overview of the Master Plan for the expanding campus for OHSU.



**January 12, 2016**  
**2016 Construction Forecast**

[VIEW KEY MARKET INDICATORS - JULY 2015 >](#)

As we saw in the June construction costs and commodity prices are largely under control. In fact, looking at the Construction Inputs PPI section, a surprisingly large number of costs are trending down. The direction of costs is not likely to change if China continues to slow down. Market Indicators are positive with the Architectural Billings Index and the Dodge Momentum Index trending in the same direction. On January 12, 2016 Cliff Brewis will expand on this information and look toward the future in Portland Chapter CSI Annual Construction Market Outlook. Please put on your calendar now for this not to miss event.



**February 9, 2016**  
**Grill the Estimator (Joint Meeting with ASPE)**

It's heating up in here! Come put the Estimator on the spot to answer the tough questions!

**March 9, 2016**

**Multi-Generational Panel: Design/Construction and the Changing of the Guard**

Baby Boomers are retiring, Millennials are entering the workforce in-mass, and the Recession through a wrench in the whole system.

**April 12, 2016**

**Design Build - Design Assist - Delegated Design: What do they all mean? (Joint Meeting with DBIA)**

What are the new trends in project delivery and where is the risk getting pushed to?



**June 14, 2016**  
**CSI 4th Annual Chili Cook-Off and Awards Night**

Start practicing those Chili Recipes and getting your Teams Together!



**July 12, 2016**  
**Annual Architectural Scavenger Hunt (FREE EVENT!)**

Put your thinking cap, grab the map and the clues, and come test your architectural knowledge!

For more information and registration, visit us online at <http://portland.csinet.org/> or contact Ali Clark ([alic@emerick.com](mailto:alic@emerick.com)) for more details!

**CSI PORTLAND EVENTS**

Tee Box Sponsors



Willamette Graystone



Sto Corp



# May the Force be with You

*Cherise Lakeside, CSI, CDT, Chapter President*



The fall certification window is underway. Good luck to our Portland CSI candidates who are taking their exams.

We are already gearing up for the Spring certification window and will again be offering CDT Certification Scholarships to young professionals as well as Advanced Certification Scholarships to our our members. Keep your eyes peeled for more info coming soon. Chapter CDT classes will begin mid to late January.

## KRAKEN COMMITTEE

### Stellar Members

*Cherise Lakeside, CSI, CDT, Chapter President*



Every month we try to highlight and recognize a member or two who is going above and beyond to make our Chapter the best it can be. This month I have two!

#### **Erica Bitterman-Ryon**

As she has for about 100 years, Ms. Erica and her team once again put on an awesome golf tournament. Erica works tirelessly to assure it is an awesome day and her efforts pay off every year. The money earned from the Portland CSI Golf Tournament directly benefits our members in CSI Certification Scholarships and keeps the value and education here at home where we need it.

Erica sold out the course, obtained a long list of sponsors, put up with me all day and attended to every need of our golfers during the event. This girl never says no and always takes it to the next level. I don't think I could find enough ways to tell her thank you for her dedication and commitment.

#### **Richard Heiserman**

We were in need of a new Certification Committee Chair and Rick has again agreed to step up for the next year and help us out to cover this position and train a new set of teachers and leaders. While I know Rick would like to step back a little and let the new guard take the helm, when we need help he never say's no and always brings his experience and guidance to help get the job done.

We are so thankful for that experience but even more thankful for Rick's unwavering dedication to our chapter and mentoring the people in it. It is the only reason I take so much guff from him! Thank you Rick for all that you do!

## EDUCATION

### Fall Learning Ahead

*Jake LaManna, CSI-EP, CDT, Education Chair*





The Education Committee is back from summer vacation! We have some great classes coming up this fall with some old favorites--Specs 101 and Mock Bid--as well as some new classes on commissioning and the difference between delegated design and design assist. Make sure to check our website for more information as details will be coming out soon!

## SOCIAL MEDIA

### Get Social



CSI Members in Portland, across the country and beyond are sharing information on LinkedIn Discussion Groups, Twitter and blogs that are full of great information. We encourage you to connect with these professionals and expand your network. We learn something new from them each and every day.

Featured blogs this month:

[Tell me again, Part I](#) by Sheldon Wolfe, FCSI, CCS

## MEMBERSHIP

### Membership

*Lee Kilbourn, FCSI, Member Emeritus, CCS, FAIA, Membership*

*Chair*

#### Renewed and New Members April 2015

- Bryan Ackler, CSI; member since member since 2012
- Mark Barney, CSI, CDT, AHC; Northwest Hardware Consultants; member since 2002
- Julie Bronder, CSI, AIA; ZGF Architects LLP; member since 1993
- Colleen Cameron, CSI; Owens Corning; member since 2007
- Jason Chupp, CSI; Swinerton Builders; member since 2013
- Craig Cody, CSI; Architextures; member since 2011
- Chris Ferguson, CSI; Atlas Supply, Inc.; member since 2015
- Jon Grastle, CSI, CDT; Hoffman Construction Co.; member since 1997
- Etta Goerl, CSI, CDT; Port of Portland; member since 2010
- Nick Haluschak, PE, CSI, ASCE; NH Engineering, PLLC; member since 1988
- Jim Hanset, CSI; Hanset Stainless; member since 1997
- Amy Hjelte, CSI, CCS; LRS Architects, Inc.; member since 2002
- Trasi Hogenhout, CSI; Contractor Plan Center, Inc.; member since 1988
- Kyle Holloway, CAPS, BIAW, CSI; Wikk Industries, Inc.; member since 2012
- Scott Huff, CSI-EP; Versico; member since 2015 - **NEW**
- Jim Hutchin, CSI; Bridgetown Sales, LLC; member since 2009
- John Lape, FCSI, CCS, AIA, FCSC; John Lape, Architect; member since 1986

- Fred Larson, CSI; All Weather Architectural Aluminum; member since 2003
- Ronald Lee, CSI, AIA; BBL Architects; member since 1985
- Randy McAdams, CSI; Atlas Supply; member since 2010
- Mark Miller, CSI-EP; Skoler Building Resources; member since 2012
- Gregory Mockford, CSI; Pinnell Busch Inc.; member since 2014
- Kenneth Mouchka, CSI, CCS, AIA; Mouchka Architecture LLC; member since 1980
- M. Myers, CSI, CDT, AIA; MK Myers; member since 1986
- Gordon Nelson, CSI; Pacific Facade Systems, LLC; member since 2014
- Stanley Nelson, CSI, CDT; Architect; member since 1975
- Bo Oswald, CSI; Essex General Construction; member since 2015 - **NEW**
- Derek Payne, CSI; Benchmark by Kingspan; member since 2014
- Larry Payne, CSI-S, CDT; ; member since 2010
- Russell Pitkin, RA, CSI, CDT, AIA, LEED AP; SERA Architects; member since 2004
- Steve Popkes, CSI, CDT; AEP Span; member since 1999
- Allison K Rouse, CSI; City of Portland; member since 2015 - **NEW**
- David Stephenson, CSI, AIA, LEED AP; SERA Architects; member since 2007
- Jon Texter, CSI; Essex General Construction; member since 1987
- Anna Todd, CSI, LEED AP; Todd Construction, Inc.; member since 2012
- Kristian Vockler, CSI; ICD Coatings; member since 2015 - **NEW**
- Susan Wurdeman, CSI, NCARB; Dull Olson Weekes - IBI Group Architects; member since 1997
- David York, CSI, AIA; David York architect, LLC; member since 2013

### **Renewed and New Members May 2015**

- Mike Aguilar, CSI; Stonhard; member since 2015 - **NEW**
- Mike Baker, CSI; Mutual Materials; member since 1997
- Megan Barber, CSI-EP; Weller Associates, Inc.; member since 2015 - **NEW**
- Maddie Carde, BA, CSI, USGBC; Boral; member since 2015 - **NEW**
- William Clark Jr., CSI, CDT; WM. Clark and Associates, LLC; member since 1991
- Timothy Clem, CSI, CDT, AIA, LEED AP, NCARB; Architect; member since 2002
- Chris Combs, CSI; Dow Corning; member since 2015 - **NEW**
- Mark Cooney, CSI, CDT; Hubbell; member since 2005
- Scott Harris, CSI; JRJ architects, llc; member since 1999
- John Havens, MS, CSI; ; member since 2015 - **NEW**
- Kathy Hempel, CSI, CCCA; DeaMor Associates, Inc.; member since 2009
- Jeff Herrmann, CSI, CDT; Georgia-Pacific; member since 2002
- Douglas Isaacs, CSI; Crawford Roll-Lite Door Sales of Oregon; member since 2014
- Bryce Jacobson, CSI; Metro SW&R; member since 1997
- Bassam Khalifeh, CSI; Washington County - Facilities; member since 1989
- Erica Lange, CSI; CertainTeed; member since 2015 - **NEW**
- Glen Miller, CSI; GA Miller Architecture; member since 1997



- Mark Moyes, CSI; KPFF Inc.; member since 1995
- Ian Murphy, CSI, CDT; Exterior Allied Systems LLC; member since 1992
- Jeff Rubino, CSI; Oldcastle Building Envelope; member since 2003
- Austin Sloat, CSI, AIA; Neumann Sloat Architects LLP; member since 2009
- Michael Steffen, CSI; Walsh Construction Co.; member since 2015 - **NEW**
- James Wright, CSI, CCS; Architect; member since 1995

### Renewed and New Members June 2015

- Paul Adelman, CSI; Performance Contracting Inc.; member since 2014
- Wesley Campos, CSI; Assa Abloy; member since 2015 - **NEW**
- Jody Cross, CSI, AHC; Allegion, PLC; member since 1998
- Russel Donohue, RA, CSI, CDT, NCARB; Architect; member since 2007
- Wayne Drexler, CSI; Grace Construction Products; member since 1999
- Joseph Gehlen, CSI; Kramer-Gehlen & Associates, Inc.; member since 1988
- Brad Glauser, CSI, SAME; Wausau Window & Wall Systems; member since 2015 - **NEW**
- Christine Irwin, CSI, CDT; Bain Associates, Inc; member since 1995
- Dale Kuykendall, CSI, CDT; Glen/Mar; member since 1986
- Robert Lecher, CSI, CDT, AIA, NCARB; Architect; member since 2012
- Sharon Libby, CSI, LEED AP, NCARB; Walsh Construction Co.; member since 2015 - **NEW**
- Alexander Lungershausen, CSI, CDT, AIA, LEED AP; Hennebery Eddy Architects; member since 2003
- Joseph McMillen, CSI-EP, CET; RDH Building Envelope; member since 2014
- Cherie McNabb, CSI, CDT; Forbo Flooring Systems; member since 1993
- Randall Page, CSI, AIA, LEED AP, NCARB; Randall A Page Architect; member since 2014
- D. Dustin Posner, CSI, CCCA, AIA, NCARB; DDP Architecture, LLC; member since 2009
- Brian Ross, CSI, CCS; Aerotek / BPA; member since 2013
- Mrs. Anne Ryan, CSI; Milliken; member since 2015 - **NEW**
- Douglas Sams, CSI, CDT, AIA, LEED AP; ZGF Architects LLP; member since 2002

## CSI NATIONAL NEWS

### Upcoming CSI Conferences



**Construct 2015**

Sept 30 - Oct 3, 2015

St. Louis, MO

This year, to be held in St Louis, Missouri from September 30 to October 3rd, 2015. If last year was any indication, this will be a wonderful week of networking, education, sightseeing and fun along with catching up with old and new friends. Also follow the planning and conversation on Twitter by typing in the hashtags

### First Inaugural Young Professionals Day at Construct

If you are 35 and under, you are a young professional and don't want to miss this fabulous opportunity for a full day of events strictly for young A/E/C professionals for an amazing low price. Not only can you attend young professional day for only \$70, but that pass is also for the full education program at CONSTRUCT following YP Day. This is the most amazing deal ever, but spots are very, very limited and going fast. Check out all the details here and get signed up quick! [LEARN MORE >](#)



### Bi Region Conference

May 18-22, 2016

Lake Tahoe

If you are interested in helping out please let one of your region leaders know.

---

## Institute and Region Chapters

[CSI National](#)

[CSI Northwest Region](#)

<b>Chapter Name</b>	<b>Contact</b>	<b>Phone</b>	<b>Monthly Meetings</b>
<a href="#">Big Sky</a>	Jan O'Brien	406-245-6363	Last Tuesday
<a href="#">Capital</a>	Chris Veit	503-390-0291	Third Thursday
<a href="#">Cook Inlet</a>	Mark Hughes	907-267-5163	Third Tuesday
<a href="#">Idaho</a>	Karen Morris	208-343-3620	Third Tuesday
<a href="#">Mt. Rainier</a>	Bob Kenworthy	253-931-4904	First Thursday
<a href="#">Puget Sound</a>	Andrew Estep	206-382-3393	Second Thursday
<a href="#">Spokane</a>	Georgia Spencer	509-328-2771	Second Thursday
<a href="#">Willamette Valley</a>	Alorie Mayer	541-485-0922	Last Thursday

## INDUSTRY NEWS

## Professional Organizations

[Construction Specifications Canada \(CSC\)](#)

[Construction Specifications Institute \(CSI\)](#)

[Specifications Consultants in Independent Practice \(SCIP\)](#)

---

## Allied Organizations

Got an addition to the list? Send it to [portlandcsi@gmail.com](mailto:portlandcsi@gmail.com).

### Design

[American Institute of Architects - Portland \(AIA\)](#)

[American Society of Interior Designers \(ASID\)](#)

[Cascadia Region Green Building Council \(GBC\)](#)

[National Association of Office and Industrial Properties - Oregon \(NAIOP\)](#)

[Society for Marketing Professional Services - Oregon \(SMPS\)](#)

[Architectural Foundation of Oregon \(AFO\)](#)

### Technical

[American Society of Mechanical Engineers - Oregon \(ASME\)](#)

American Society of Plumbing Engineers - Portland Chapter  
Building Owners and Managers Association International - Oregon  
(BOMA)

International Facilities Management Association - Oregon & SW  
Washington Chapter (IFMA)

Portland Building Enclosure Council (BEC)

**Construction**

Associated General Contractors - Oregon-Columbia Chapter (AGC)

Construction Management Association of America - Oregon (CMAA)

Design-Build Institute of America - Northwest Region (DBIA)

Home Builders Association of Metropolitan Portland (HBA)

Oregon Remodelers Association (ORA)

National Women in Construction - Portland Chapter #54 (NAWIC)

Hi, just a reminder that you're receiving this email because you have expressed an interest in Portland Chapter CSI. Don't forget to add portlandcsi@gmail.com to your address book so we'll be sure to land in your inbox!

You may [unsubscribe](#) if you no longer wish to receive our emails.

OCTOBER 2015

VOL 55 / NO 10



# The Predicator

## IN THE SPOTLIGHT

### October Chapter Meeting Willamette Falls: Rediscovery & Redesign

*Alicia Clark, CSI, Programs Chair*



**Tuesday, October 13th from 6:00 to 8:30 PM**

No landscape feature in the metro region is grander--and more hidden--than Willamette Falls. Second only to Niagara Falls for the volume of water spilling over it, the Falls have been sacred to Native Americans for millennia, a powerhouse to the economy for a century, and blocked from public access for decades. That's about to change. Join us this month for a presentation at Elephants Deli on Corbett and hear all about this exciting project. [LEARN MORE OR REGISTER HERE >](#)

## CSI PORTLAND NEWS

### We Need Speakers

*Cherise Lakeside, CSI, CDT, Chapter President*



No, not those kind of speakers! We need presenters. Do you have a great topic that you can share with our members? Do you have an idea for a dynamic program? Both our Programs Committee and our Education Committee are looking for speakers who can teach our members and share valuable information on the latest and greatest new technologies, best practices and anything else that is valuable to help us do our day-to-day work. The Chapter is set up to get the courses approved for AIA credit and all presentations/courses need to qualify as a learning session. Please contact the chapter at [portlandcsi@gmail.com](mailto:portlandcsi@gmail.com) if you have content to share.



JOIN OUR MAILING LIST

SUBMIT NEWS

EDIT MY EMAIL PREFERENCES

#### In this Issue

[October Chapter Meeting](#)

[We Need Speakers](#)

[Save the Dates: Upcoming Chapter Meetings & Events](#)

[Lecture Series Begins Again](#)

[Get Social](#)

[New Member Orientation](#)

[Membership](#)

[Upcoming CSI Conferences](#)

[Region Chapter Contacts](#)

[Professional Organizations](#)

[Allied Organizations](#)

Upcoming Events

**October 14th**

**Save the Dates: Upcoming Chapter**

# Meetings & Events

Alicia Clark, CSI-EP, CDT, Chapter Director, Programs Chair



## Tuesday, November 10, 2015 4:30-5:30 PM New Member Orientation follow by Portland Japanese Garden Expansion Project

The Portland Japanese Garden has unveiled a \$33.5 million expansion plan that will include three new LEED certified buildings as part of what's called a Cultural Village, as well as seven new garden spaces, while only increasing its footprint by 11,328 square feet. The inspired design blends traditional Japanese design with the spirit of the Pacific Northwest. Tokyo based Kengo Kuma and Associates developed the vision and design for the expansion of the Portland Japanese Garden, with THA Architecture and Walker Macy Landscape Architects serving as the local partners. [LEARN MORE HERE >](#)



## December 8, 2015 OHSU Master Plan Presentation

Overview of the Master Plan for the expanding campus for OHSU.



## January 12, 2016 2016 Construction Forecast

[VIEW KEY MARKET INDICATORS - JULY 2015 >](#)

As we saw in the June construction costs and commodity prices are largely under control. In fact, looking at the Construction Inputs PPI section, a surprisingly large number of costs are trending down. The direction of costs is not likely to change if China continues to slow down. Market Indicators are positive with the Architectural Billings Index and the Dodge Momentum Index trending in the same direction. On January 12, 2016 Cliff Brewis will expand on this information and look toward the future in Portland Chapter CSI Annual Construction Market Outlook. Please put on your calendar now for this not to miss event.



## February 9, 2016 Grill the Estimator (Joint Meeting with ASPE)

It's heating up in here! Come put the Estimator on the spot to answer the tough questions!

## March 9, 2016

### Multi-Generational Panel: Design/Construction and the Changing of the Guard

Baby Boomers are retiring, Millennials are entering the workforce in-mass, and the Recession through a wrench in the whole system.

## April 12, 2016

### Design Build - Design Assist - Delegated Design: What do they all mean? (Joint Meeting with DBIA)

What are the new trends in project delivery and where is the risk getting pushed to?



## June 14, 2016 CSI 4th Annual Chili Cook-Off and Awards Night

Start practicing those Chili Recipes and getting your Teams Together!

[AIA Case Study: City of Portland Emergency Coordination Center](#)

## October 16th

[AIA Building Tour: City of Portland Emergency Coordination Center](#)

## October 22nd

[CSI Lecture Series: Mock Bid Day](#)  
5:30-7:30 PM  
Columbia Square

## October 22nd

[CSI Willamette Valley Chapter 50th Anniversary Celebration](#)

## November 10th

Fall New Member Orientation

## November 10th

[Chapter Meeting: Portland Japanese Garden Expansion Project](#)

## December 8th

[Chapter Meeting: OHSU Master Plan](#)

## 2016

## May 18-22

[CSI Bi-Region Conference & Leadership Training](#)  
Hyatt Regency Lake Tahoe, NV

## THANK YOU GOLF 2015 SPONSORS!

Beverage/Dinner/  
Lunch Sponsors



**Husqvarna  
Group**



July 12, 2016

## Annual Architectural Scavenger Hunt (FREE EVENT!)

Put your thinking cap, grab the map and the clues, and come test your architectural knowledge!

For more information and registration, visit us online at <http://portland.csinet.org/> or contact Ali Clark ([alic@emerick.com](mailto:alic@emerick.com)) for more details!

### EDUCATION

## Lecture Series Begins Again

*Jake LaManna, CSI-EP, CDT, Education Chair*



### Specs 101 Successful

It's back! Our Lecture Series is back in full swing starting off the fall season with a very successful Specs 101 seminar taught by Cherise Lakeside, Interface Engineering. With a full-house of 30 audience members and enough pizza and microbrews to satisfy a fraternity, the event was a success. We will be looking to expand on this annual lecture in the near future.

### Mock Bid Day - October 22nd from 5:30-7:30 PM

Next up--Mock Bid Day. You asked, you screamed, we listened. Come experience the chaos that is a GC's office on bid day and get some hands-on experience. Review the flurry of faxes and get your bid in on time as you compete against your colleagues for the most accurate bid. Best part is the cost is only \$10, and that gets you beer, pizza and 1 CEU.

[REGISTER HERE >](#)

### SOCIAL MEDIA

## Get Social



each and every day.

CSI Members in Portland, across the country and beyond are sharing information on LinkedIn Discussion Groups, Twitter and blogs that are full of great information. We encourage you to connect with these professionals and expand your network. We learn something new from them

Featured blogs this month:

[Tell me again, Part II](#) by Sheldon Wolfe, FCSI, CCS

### MEMBERSHIP

## New Member Orientation

Welcome



Each year, Portland CSI holds a member orientation event. This provides our new or curious members the opportunity to come learn about all CSI has to offer. It provides an overlook of membership benefits, various committees or



Hole Sponsors



groups to get involved with, introduces you to our Board of Directors and Committee Chairpersons and get your questions answered. Our fall orientation will take place directly before our November Chapter Meeting in the same venue. Come and get to know us and find out how you can maximize your membership. This event is FREE. [RSVP here >](#)

## Membership

*Lee Kilbourn, FCSI, Member Emeritus, CCS, FAIA, Membership*

*Chair*

### Renewed and New Members July 2015

- Bruce Brown, CSI, AIA; GBD Architects, Incorporated; member since 1990
- Ray Rauscher, CSI; Speedy Glass Commercial Division; member since 2015 - **NEW**
- Richard Rapp, CSI, CDT, NCARB; member since 2013 - **NEW TO PORTLAND CHAPTER**
- William Pelke, CSI, AIA, CSC; Covestro (formerly Bayer MaterialScience); member since 2004
- Justin Norman, CSI; Woodfold Mfg. Inc.; member since 2010
- Jody Moore, CSI, CDT; DeaMor Associates, Inc.; member since 1984
- Richard McBride, CSI; McBride Architects, P.C.; member since 1996
- Brian Lee, PE, CSI; PACE Engineers; member since 1997
- Erik Lawrence, CSI, AIA, M. Arch, NCARB; RDH Building Sciences, Inc.; member since 2013
- Marc Labadie, CSI; TVA Architects, Inc.; member since 1994
- Craig Jaeger, CSI, CDT; Jaeger& Erwert General Contractors; member since 1986
- Richard Heiserman, FCSI, CCCA, AIA; Ankrom Moisan Associated Architects; member since 1986
- Artemus DeRosia, CSI, AIA; PacTrust; member since 2006
- Tim Cox, CSI-EP; Oregon Door; member since 2013 - **NEW TO PORTLAND CHAPTER**
- James Choate-Deeds, CSI, AIA, LEED AP; CPI Daylighting - NW; member since 2012

## CSI NATIONAL NEWS

### Upcoming CSI Conferences



#### Bi Region Conference

May 18-22, 2016

Lake Tahoe

If you are interested in helping out please let one of your region leaders know.

## Institute and Region Chapters

[CSI National](#)

[CSI Northwest Region](#)

Chapter Name	Contact	Phone	Monthly Meetings
--------------	---------	-------	------------------

**DODGE**  
DATA & ANALYTICS

**Armstrong**  
CEILING & WALL SYSTEMS

Tee Box Sponsors

BUILDING TRUST 

Willamette Graystone

 **WALSH**  
CONSTRUCTION CO.

  
**Document Solutions**

**ATG**  
ADVANCED TECHNOLOGY GROUP  
*Constructing the Future*  
atgweb.com

  
ENGINEERING

**MILLER**  
  
**PAINT CO.**  
SINCE 1890  
An Employee Owned Company

**Laird Plastics**  
One Source - The Right Way®

**Ameriprise**  
Financial

 **ideate**  
From Ideas to Reality

 **Fortifiber Building Systems Group**  
Protecting Your World from the Elements®

<u>Big Sky</u>	Jan O'Brien	406-245-6363	Last Tuesday
<u>Capital</u>	Chris Veit	503-390-0291	Third Thursday
<u>Cook Inlet</u>	Mark Hughes	907-267-5163	Third Tuesday
<u>Idaho</u>	Karen Morris	208-343-3620	Third Tuesday
<u>Mt. Rainier</u>	Bob Kenworthy	253-931-4904	First Thursday
<u>Puget Sound</u>	Andrew Estep	206-382-3393	Second Thursday
<u>Spokane</u>	Georgia Spencer	509-328-2771	Second Thursday
<u>Willamette Valley</u>	Alorie Mayer	541-485-0922	Last Thursday

Sto Corp



## INDUSTRY NEWS

### Professional Organizations

- Construction Specifications Canada (CSC)
- Construction Specifications Institute (CSI)
- Specifications Consultants in Independent Practice (SCIP)

### Allied Organizations

Got an addition to the list? Send it to [portlandcsi@gmail.com](mailto:portlandcsi@gmail.com).

#### Design

- American Institute of Architects - Portland (AIA)
- American Society of Interior Designers (ASID)
- Cascadia Region Green Building Council (GBC)
- National Association of Office and Industrial Properties - Oregon (NAIOP)
- Society for Marketing Professional Services - Oregon (SMPS)
- Architectural Foundation of Oregon (AFO)

#### Technical

- American Society of Mechanical Engineers - Oregon (ASME)
- American Society of Plumbing Engineers - Portland Chapter
- Building Owners and Managers Association International - Oregon (BOMA)
- International Facilities Management Association - Oregon & SW Washington Chapter (IFMA)
- Portland Building Enclosure Council (BEC)

#### Construction

- Associated General Contractors - Oregon-Columbia Chapter (AGC)
- Construction Management Association of America - Oregon (CMAA)
- Design-Build Institute of America - Northwest Region (DBIA)
- Home Builders Association of Metropolitan Portland (HBA)
- Oregon Remodelers Association (ORA)
- National Women in Construction - Portland Chapter #54 (NAWIC)



Hi, just a reminder that you're receiving this email because you have expressed an interest in Portland Chapter CSI. Don't forget to add portlandcsi@gmail.com to your address book so we'll be sure to land in your inbox!

You may [unsubscribe](#) if you no longer wish to receive our emails.

NOVEMBER 2015

VOL 55 / NO 11



# The Predicator

## IN THE SPOTLIGHT

### November Chapter Meeting: Portland Japanese Garden Expansion Project

*Alicia Clark, CSI, Programs Chair*



**Tuesday, November 10, 2015**

**5:30 - 7:30 PM**

**Widmer Bros. Brewery**

The Portland Japanese Garden has unveiled a \$33.5 million expansion plan that will include three new LEED certified buildings as part of what's called a Cultural Village, as well as seven new garden spaces, while only increasing its footprint by 11,328 square feet. The inspired design blends traditional Japanese design with the spirit of the Pacific Northwest. Tokyo based Kengo Kuma and Associates developed the vision and design for the expansion of the Portland Japanese Garden, with THA Architecture and Walker Macy Landscape Architects serving as the local partners.

[LEARN MORE HERE >](#)

## Sponsorship Opportunities 2016

*Corey Morris, CSI, Chapter Secretary*

In the 2016 year, CSI plans to present 12+ events that may be sponsored by companies or other organizations. Our programs and special events provide businesses within the A/E/C industry an outstanding business development opportunity. You will gain valuable exposure for your firm, productive networking opportunities, and access to key clients and market intelligence.

For more information about how to partner with Portland CSI as one of our sponsors, contact us at [portlandcsi@gmail.com](mailto:portlandcsi@gmail.com)

## PRESIDENT'S MESSAGE

### President's Message

*Cherise Lakeside, CSI, CDT, Chapter President*



JOIN OUR  
MAILING LIST

SUBMIT NEWS

EDIT MY  
EMAIL  
PREFERENCES

ADVERTISE  
WITH US

### In this Issue

[November Chapter Meeting](#)

[Sponsorship Opportunities 2016](#)

[President's Message](#)

[Reaching New Heights at CONSTRUCT](#)

[Save the Dates: Upcoming Chapter Meetings & Events](#)

[Certification Season is Upon Us](#)

[Helping Hand\\$ for You](#)

[Get Social](#)

[New Member Orientation](#)

[Membership](#)



In November and in conjunction with our monthly Chapter Meeting, we will be holding a New Member Orientation. Even if you are not a new member or you are a person considering joining CSI, I urge you to [join us](#). I truly wish I had attended something like this a long time ago and found out what CSI is really about which is so much more than just specifications with programs that cater to every discipline and every member of the project team. Please join me, our Board and our Committee Chairs and find out what you are missing. [READ MORE >](#)

## CSI PORTLAND NEWS

# Reaching New Heights at CONSTRUCT 2015

*Ellen Onstad, CSI, CDT, Chapter President-Elect*



Thank you for the opportunity to attend Construct in St Louis at end of September. The four days I spent there were jam packed with events, classes, product show, networking and socializing, and despite all the pictures, tweets, and blogs produced, I am not sure it will be possible to adequately summarize. CONSTRUCT should be experienced at least once in your career. No other event offers such a diverse group of architecture and construction professionals that all have an equal voice and interest at the table. Construct provides the contacts I need to conduct my business more effectively. It helps to know the people you are dealing with. [READ MORE >](#)

# Save the Dates: Upcoming Chapter Meetings & Events

*Alicia Clark, CSI-EP, CDT, Chapter Director, Programs Chair*



## December 8, 2015 OHSU Master Plan Presentation

Overview of the Master Plan for the expanding campus for OHSU.



## January 12, 2016 2016 Construction Forecast [VIEW KEY MARKET INDICATORS - JULY 2015 >](#)

As we saw in the June construction costs and commodity prices are largely under control. In fact, looking at the Construction Inputs PPI section, a surprisingly large number of costs are trending down. The direction of costs is not likely to change if China continues to slow down. Market Indicators are positive with the Architectural Billings Index and the Dodge Momentum Index trending in the same direction. On January 12, 2016 Cliff Brewis will expand on this information and look toward the future in Portland Chapter CSI Annual Construction Market Outlook. Please put on your calendar now for this

[Upcoming CSI](#)

[Conferences](#)

[Region Chapter](#)

[Contacts](#)

[Professional](#)

[Organizations](#)

[Allied Organizations](#)

## Upcoming Events

### November 10th

[Fall Member Orientation](#)  
4:30-5:30 PM  
Widmer Bros. Brewery

### November 10th

[Chapter Meeting: Portland Japanese Garden Expansion Project](#)  
5:30-7:30 PM  
Widmer Bros. Brewery

### December 8th

Chapter Meeting:  
OHSU Master Plan

## 2016

### January 12

Chapter Meeting  
2016 Construction Forecast

### February 9

Chapter Meeting  
Grill the Estimator

### March 9

Chapter Meeting  
Multi-Generational Panel

### April 12

Chapter Meeting:  
Design/Build, Design Assist, Delegated Design

### May 11

CSI Industry Forum  
Portland Art Museum

### May 18-22

[CSI Bi-Region Conference & Leadership Training](#)  
Hyatt Regency Lake

not to miss event.

For more information and registration, visit us online at <http://portland.csinet.org/> or contact Ali Clark ([alic@emerick.com](mailto:alic@emerick.com)) for more details!

## CERTIFICATION

### Certification Season is Upon Us

*Richard Heiserman, AIA, FCSI, CCCA, Certification Chair*

The Spring Certification season is quickly approaching. Portland CSI CDT Prep classes will be held at Ankrom Moisan Architects once a week during February and March leading up to the April testing window. Sign up for Spring testing will be coming soon on the CSI National website. Further details on the Portland CSI CDT classes will be coming in the December newsletter. Or you can [WATCH HERE >](#)

### Helping Hand\$ for You

*Richard Heiserman, AIA, FCSI, CCCA, Certification Chair*

Portland CSI is proud to dedicate our scholarship dollars to emerging professional CDT scholarships and existing member advanced certification scholarships. The application period is open now and will close on December 20, 2015.

I urge you to look around your office, identify emerging professionals who would benefit from achieving CDT certification and urge them to apply. Emerging professionals from any discipline or area of the built industry are welcome to apply (architecture, engineering, construction, product reps, owners, etc.).

CDT Scholarships are available to emerging professionals within the following guidelines:

1. Must be an existing CSI member or become one. (See covered costs below)
2. Must be an emerging professional with less than ten years experience in your field (this scholarship is not based on age, it is based on years of experience).
3. Must make a one-year commitment to a [Portland CSI committee](#) of your choice.

The scholarship includes the following:

1. Membership fees (if needed) after the first \$100.
2. Cost of Portland Chapter CDT class
3. Cost of Project Delivery Practice Guide and Study Workbook
4. Exam cost reimbursed upon passing

This scholarship has an approximate dollar value of \$800. Total cost to winners is \$100 provided you pass the exam.

To apply, please send an email with the following information:

- Your name
- Your mailing address, city, state, zip
- Your contact phone number and email

Tahoe, NV

#### June 14

CSI Annual Chili Cook-off and Awards

#### July 12

CSI Annual Architectural Scavenger Hunt

---

- Your company
- Your discipline
- A brief statement stating why you are interested in becoming CDT certified

Scholarship recipients will be notified of award by December 31st. Applications and questions should be sent [Rick Heiserman](#) and [Cherise Lakeside](#).

## SOCIAL MEDIA

### Get Social



CSI Members in Portland, across the country and beyond are sharing information on LinkedIn Discussion Groups, Twitter and blogs that are full of great information. We encourage you to connect with these professionals and expand your network. We learn something new from them each and every day.

Featured blogs this month:

Randy Nishimura, AIA, CSI, CCS - SW Oregon Architect  
[Sullivan-esque](#)

Sheldon Wolfe, CSI Chief Curmudgeon  
Tell Me Again Part 3  
[Constructive Thoughts](#)  
[Specific Thoughts](#)

Eric Lussier, CSI, CDT - Indoor Sports Flooring Trusted Advisor  
[Dear CSI: I Met Your Mark at CONSTRUCT 2015](#)

## MEMBERSHIP

### New Member Orientation



Each year, Portland CSI holds a member orientation event. This provides our new or curious members the opportunity to come learn about all CSI has to offer. It provides an overlook of membership benefits, various committees or groups to get involved with, introduces you to our Board of Directors and

Committee Chairpersons and get your questions answered. Our fall orientation will take place directly before our November Chapter Meeting in the same venue. Come and get to know us and find out how you can maximize your membership. This event is FREE. [RSVP here >](#)

## Membership

*Lee Kilbourn, FCSI, Member Emeritus, CCS, FAIA, Membership Chair*

### Put CSI's Member Directory on Your iPhone or iPad

CSI's Member Directory contains contact information for thousands of construction professionals who belong to the Construction Specifications Institute. It is available only to CSI members in good standing -- you'll need your CSI login to access the app. Search for a CSI member by name, company, location, CSI chapter or CSI Certification!

**Renewed and New Members August 2015**

- Dean Aldrich, Esq., CSI; The Aldrich Law Office; member since 1996
- James Wilson, CSI, CCS; SRG Partnership, P.C.; member since 1989
- Eric Watson, CSI; Miller Consulting Engineers, Inc.; member since 2003
- Brad Stotts, CSI; DryVit Systems, Inc.; member since 2012
- Dan Quatier, CSI; Interior Technology; member since 2007
- Barak Meinshausen, CSI; Behlen Manufacturing Co; member since 2012
- Raoul Meekcoms, CSI; Building Envelope Representatives; member since 1982
- Dennet Latham, RA, CSI, CCS, LEED AP; CH2M HILL; member since 1980
- John Killin, CSI; NW Wall and Ceiling Bureau; member since 2013
- Martin Houston, CSI, CDT, AIA, LEED AP; Walsh Construction; member since 2011
- Bud Henson, CSI; Window Tech Inc.; member since 1997
- Angela Frye, CSI; PPG Industries; member since 2014
- Anthony Fennig, CSI; PKA Architects; member since 1993
- Brett Cole, CSI; Pacific Stair; member since 2015 - **NEW**
- Leslie Case, CSI; Laird Plastics; member since 2014
- Mark Atteridge, CSI; Deamor; member since 2007

## CSI NATIONAL NEWS

### Upcoming National CSI Conferences



#### **Bi Region Conference**

May 18-22, 2016

Lake Tahoe

If you are interested in helping out please let one of your region leaders know.

### Institute and Region Chapters

[CSI National](#)

[CSI Northwest Region](#)

<b>Chapter Name</b>	<b>Contact</b>	<b>Phone</b>	<b>Monthly Meetings</b>
<u><a href="#">Big Sky</a></u>	Jan O'Brien	406-245-6363	Last Tuesday
<u><a href="#">Capital</a></u>	Chris Veit	503-390-0291	Third Thursday
<u><a href="#">Cook Inlet</a></u>	Mark Hughes	907-267-5163	Third Tuesday
<u><a href="#">Idaho</a></u>	Karen Morris	208-343-3620	Third Tuesday
<u><a href="#">Mt. Rainier</a></u>	Bob Kenworthy	253-931-4904	First Thursday
<u><a href="#">Puget Sound</a></u>	Andrew Estep	206-382-3393	Second Thursday
<u><a href="#">Spokane</a></u>	Georgia Spencer	509-328-2771	Second Thursday
<u><a href="#">Willamette Valley</a></u>	Alorie Mayer	541-485-0922	Last Thursday

## INDUSTRY NEWS

### Professional Organizations

Construction Specifications Canada (CSC)  
Construction Specifications Institute (CSI)  
Specifications Consultants in Independent Practice (SCIP)

---

## Allied Organizations

Got an addition to the list? Send it to [portlandcsi@gmail.com](mailto:portlandcsi@gmail.com).

### **Design**

American Institute of Architects - Portland (AIA)  
American Society of Interior Designers (ASID)  
Cascadia Region Green Building Council (GBC)  
National Association of Office and Industrial Properties - Oregon (NAIOP)  
Society for Marketing Professional Services - Oregon (SMPS)  
Architectural Foundation of Oregon (AFO)

### **Technical**

American Society of Mechanical Engineers - Oregon (ASME)  
American Society of Plumbing Engineers - Portland Chapter  
Building Owners and Managers Association International - Oregon (BOMA)  
International Facilities Management Association - Oregon & SW Washington Chapter (IFMA)  
Portland Building Enclosure Council (BEC)

### **Construction**

Associated General Contractors - Oregon-Columbia Chapter (AGC)  
Construction Management Association of America - Oregon (CMAA)  
Design-Build Institute of America - Northwest Region (DBIA)  
Home Builders Association of Metropolitan Portland (HBA)  
Oregon Remodelers Association (ORA)  
National Women in Construction - Portland Chapter #54 (NAWIC)

Hi, just a reminder that you're receiving this email because you have expressed an interest in Portland Chapter CSI. Don't forget to add portlandcsi@gmail.com to your address book so we'll be sure to land in your inbox!

You may [unsubscribe](#) if you no longer wish to receive our emails.

DECEMBER 2015

VOL 55 / NO 12



# The Predicator

## IN THE SPOTLIGHT

### December Chapter Meeting From Pill Hill to South Waterfront: OHSU's Campus Expansion & New Facilities

*Alicia Clark, CSI, Programs Chair*



**Tuesday, December 8, 2015**

**5:30 - 8:30 PM**

**Widmer Bros. Brewery**

**SOLD OUT - some walk-ins will be accepted at the door depending on space.**

OHSU has a 116-acre main campus on Marquam Hill, 8 acres in the South Waterfront, and a 20-acre parcel just north of the South Waterfront that was donated by the Schnitzer Family. OHSU has just opened the new Collaborative Life Sciences Building in the Schnitzer Campus, and has three new building in design for both the Schnitzer Campus and South Waterfront. Come join Portland CSI for a presentation on current and future plans for the growth and redevelopment of the OHSU Campus. [LEARN MORE HERE >](#)

## PRESIDENT'S MESSAGE

### President's Message

*Cherise Lakeside, CSI, CDT, Chapter President*



Alas, again the holidays are upon us. The year has flown by and Portland CSI has been very busy with our chapter meetings, education/ lecture series, young professional development, certification programs and other events like the golf tournament and Industry Forum. The plans for 2016 are even bigger and better and I am excited

to see what our wonderful, dedicated group of leaders comes up with next. I have heard the whispers and they will be releasing the Kraken to go big or go home! [READ MORE >](#)



JOIN OUR  
MAILING LIST

SUBMIT NEWS

ADVERTISE  
WITH US

#### In this Issue

[November Chapter Meeting](#)

[President's Message](#)

[Reaching New Heights at CONSTRUCT](#)

[Sponsorship Opportunities 2016](#)

[Reaching New Heights at CONSTRUCT](#)

[Save the Dates: Upcoming Chapter Meetings & Events](#)

[Certification Season is Upon Us](#)

[Helping Hand\\$ for You](#)

[Get Social](#)

[Membership](#)

[Region Chapter Contacts](#)

## Emerging Professionals Look Ugly

Alicia Clark, CSI-EP, Programs Chair



We had a great turn-out to our first annual Emerging Professionals Ugly Sweater Party. A lot of great conversations were had and connections made between ASHRAE and CSI. Congratulations to our ugly sweater winners, TZ Hristov (ugliest sweater) and Tom Newman (most appropriate sweater). The Green Dragon was a great venue,

and a big thank you to Alexei Holstein and Siemens, our beer sponsor.

We are looking at new ways to start conversations and get more professionals with ten years or less experience involved, so keep an eye out for more events coming up and let us know if you have any ideas.

## Emerging Professionals Look Ugly

Jake Lamanna, CSI-EP, Education Chair, Board Director



In November, I attended the Northwest Region Leadership Retreat here in Portland. It was a great opportunity to focus one's thoughts on what leadership is, how best to lead, and how best to be lead. Here are my top three takeaways from that weekend retreat.

1. **Mentorship as a means to encouraging new member participation.** As Education Chair this past year, it has become evident that a major function of the Construction Specifications Institute needs to be facilitating the transfer of knowledge. This could mean across generational divides. Or, quite simply, across the tables around which we all meet at one time or another in the building industry, to solve project specific problems. The recent recession robbed our industry of a lot of expertise in solving design, construction, and building maintenance problems. CSI needs to assume a leadership role as an organization in facilitating the rebuilding and dispersal of that knowledge.
2. **Know yourself and use that knowledge to better shape your roles as a both a leader and a participant.** During the Retreat, we explored our Personality types, similar to Myers-Briggs and Strengths Finder by Gallup. While many resist being categorized using these tests, the benefit they convey is the ability to know yourself in a more objective sense. That knowledge can help us as individuals understand where we best fit in the project delivery process, and as an organization in how we, the membership, work with our leadership and how our leadership can better serve the membership. A leadership without a membership is a very lonely entity indeed. A membership without leadership is a ship without a rudder. Both need the other in order to serve their purpose.
3. **Communicate your expectations and focus on small achievable tasks to reach the big picture goals.** The

[UO School of Architecture Events](#)

[Professional Organizations](#)

[Professional Organizations](#)

[Professional Organizations](#)

[Allied Organizations](#)

### Upcoming Events

**December 8th**  
Chapter Meeting:  
OHSU Master Plan

### 2016

**January 12**  
Chapter Meeting  
2016 Construction Forecast

**February 9**  
Chapter Meeting  
Grill the Estimator

**March 9**  
Chapter Meeting  
Multi-Generational Panel

**April 12**  
Chapter Meeting:  
Design/Build, Design Assist, Delegated Design

**May 11**  
CSI Industry Forum  
Portland Art Museum

**May 18-22**  
[CSI Bi-Region Conference & Leadership Training](#)  
Hyatt Regency Lake Tahoe, NV

**June 14**  
CSI Annual Chili Cook-off and Awards

**July 12**  
CSI Annual Architectural Scavenger Hunt



stress here is on communication as a critical aspect of achieving any goal. It also helps to remember that one does not just 'fly' from Portland to Seattle. Even a short puddle jump requires completing many small achievable tasks in a particular order to be successful. This is even more true when trying to deliver a specific project scope on time and on budget, regardless of whether that project is a closet remodel or a 12-story mixed use development in the Pearl.

**August 25**  
[Portland CSI Golf Tournament](#)  
Lewis River Golf Course

---

---

## Sponsorship Opportunities 2016

*Corey Morris, CSI, Chapter Secretary*

In the 2016 year, CSI plans to present 12+ events that may be sponsored by companies or other organizations. Our programs and special events provide businesses within the A/E/C industry an outstanding business development opportunity. You will gain valuable exposure for your firm, productive networking opportunities, and access to key clients and market intelligence.

For more information about how to partner with Portland CSI as one of our sponsors, contact us at [portlandcsi@gmail.com](mailto:portlandcsi@gmail.com)

---

## Industry Forum 2016: Theory of Practice



Plans for the 2016 Industry Forum on May 11, 2016 are well underway! Our keynote speaker is Rob Rogers of New York City's Rogers Partners.

This is the construction industry event of the year you do not want to miss!

### **Improved Venue Layout**

You asked, we listened! In order to make meeting and greeting attendees even easier, we're improving the exhibitor layout to a more centralized plan - making circulation and networking easier and less congested!

### **Sponsorship Opportunities Available**

We are pleased to offer you this opportunity to be one of the first sponsors! Take advantage of our early bird savings.

- Platinum Level - \$2,250 before Feb. 29th
- Gold Level - \$1,395 before Feb. 29th
- Silver Level - \$995 before Feb. 29th
- Bronze Level - \$695 before Feb. 29th

All sponsorship packages are available now in limited quantities, so sign up before your competitors get your preferred spot!

Registration is easy, and you can pay by credit card, check or invoice. [SPONSOR HERE >](#)

---

## Save the Dates: Upcoming Chapter Meetings & Events

*Alicia Clark, CSI-EP, CDT, Chapter Director, Programs Chair*



**January 12, 2016**

## **2016 Construction Forecast**

[VIEW KEY MARKET INDICATORS - JULY 2015 >](#)

As we saw in the June construction costs and commodity prices are largely under control. In fact, looking at the Construction Inputs PPI section, a surprisingly large number of costs are trending down.

The direction of costs is not likely to change if China continues to slow down. Market Indicators are positive with the Architectural Billings Index and the Dodge Momentum Index trending in the same direction. On January 12, 2016 Cliff Brewis will expand on this information and look toward the future in Portland Chapter CSI Annual Construction Market Outlook. Please put on your calendar now for this not to miss event.

**February 9, 2016**

### **Grill the Estimator (Joint Meeting with ASPE)**

It's heating up in here! Come put the Estimator on the spot to answer the tough questions!

**March 9, 2016**

### **Project Delivery: Why do we use them/What do they all mean? (Joint Meeting with DBIA)**

What are the new trends in project delivery and where is the risk getting pushed to?

**April 12, 2016**

### **Multi-Generational Panel: Design/Construction and the Changing of the Guard**

Speed Mentoring Event

Baby Boomers are retiring, Millennials are entering the workforce in-mass, and the Recession through a wrench in the whole system.

For more information and registration, visit us online

at <http://portland.csinet.org/> or contact Ali Clark ([alic@emerick.com](mailto:alic@emerick.com)) for more details!

## **CERTIFICATION**

# **Certification Season is Upon Us**

*Richard Heiserman, AIA, FCSI, CCCA, Certification Chair*

Spring CDT Certification Classes will begin February 3rd and run for 7 weeks. Classes will be held at Ankrom-Moisan Architects every Wednesday night from 6pm to 8pm. Class cost is \$150 for the entire series. Class dates are as follows: Wednesdays - 2/3, 2/10, 2/17, 2/24, 3/2, 3/9, 3/16. Look for more details next month.

# **Helping Hand\$ for You**

*Richard Heiserman, AIA, FCSI, CCCA, Certification Chair*

Portland CSI is proud to dedicate our scholarship dollars to emerging professional CDT scholarships and existing member advanced certification scholarships. The application period is open now and will close on **December 20, 2015**.

I urge you to look around your office, identify emerging professionals who would benefit from achieving CDT certification and urge them to apply. Emerging professionals from any discipline or area of the built industry are welcome to apply (architecture, engineering, construction, product reps, owners, etc.).

CDT Scholarships are available to emerging professionals within the following guidelines:

1. Must be an existing CSI member or become one. (See covered costs below)
2. Must be an emerging professional with less than ten years experience in your field (this scholarship is not based on age, it is based on years of experience).
3. Must make a one-year commitment to a [Portland CSI committee](#) of your choice.

The scholarship includes the following:

1. Membership fees (if needed) after the first \$100.
2. Cost of Portland Chapter CDT class
3. Cost of Project Delivery Practice Guide and Study Workbook
4. Exam cost reimbursed upon passing

This scholarship has an approximate dollar value of \$800. Total cost to winners is \$100 provided you pass the exam.

To apply, please send an email with the following information:

- Your name
- Your mailing address, city, state, zip
- Your contact phone number and email
- Your company
- Your discipline
- A brief statement stating why you are interested in becoming CDT certified

Scholarship recipients will be notified of award by December 31st. Applications and questions should be sent [Rick Heiserman](#) and [Cherise Lakeside](#).

## SOCIAL MEDIA

### Get Social



CSI Members in Portland, across the country and beyond are sharing information on LinkedIn Discussion Groups, Twitter and blogs that are full of great information. We encourage you to connect with these professionals and expand your network. We learn something new from them each and every day.

Featured blogs this month:

[Tell Me Again - And Show Me the Money](#), Sheldon Wolfe, CSI Chief Curmudgeon

## MEMBERSHIP

### Our Hearts and Prayers



The Portland Chapter of CSI would like to express our deepest condolences to past president and longtime member David "Skip" Brown on the loss of his lovely wife, Kathy, on December 3, 2015. Services will be Friday, December 11th at 11:00 AM at Holy Family Church on SE 39th and Flavel in Portland. Our thoughts and hearts are with Skip and his family during

this difficult time.

## Membership

*Lee Kilbourn, FCSI, Member Emeritus, CCS, FAIA, Membership Chair*

WELCOME to our newest members as of September 2015

- Claudia Halfen, CSI-EP; Metropolitan Hardwood Floors; member since 2015
- Jennifer Thomas, CSI; Modulus Consulting; member since 2015
- Michael Walker, CSI-EP; Interior Office Solutions; member since 2015

Emeritus member anniversaries, August and September:

- Inge Annelise Carstanjen, CSI, CDT; member since August 1983
- Richard Hurley, CSI, CDT; member since August 1988
- Richard Gessford, CSI, CDT, AIA; member since August 1993
- Edward Fatz, CSI, CDT; member since September 1992

Renewed members as of September 2015:

- Mark Booth, CSI, CDT; ZGF Architects LLP; member since 1991
- David Chaffin, CSI, CDT, AHC; HARD/SPECS ; member since 1998
- Tim Cockburn, CSI, CDT; Propel Insurance; member since 1991
- Tony DiVincenzo, CSI, LEED GA; Ideate Inc.; member since 2012
- Ken Dzioba, CSI, CDT; Parex USA Inc.; member since 1996
- Robert Ghiotto, CSI, CDT; Woodfold Mfg., Co; member since 2011
- Cody Grabenhorst, CSI-EP; Malarkey Roofing; member since 2012
- James LaManna Jr., BA, CSI-EP, CDT, M. Arch; Walsh Construction Company; member since 2013
- Michael Madias, CSI, CCS; Retired Member; member since 1990
- John Maternoski, CSI-EP; ; member since 2008
- Steve O'Hollaren, CSI, LEED GA, USGBC; ICD High Performance Coatings; member since 2009
- Cherise Schacter Lakeside, CSI, CDT; Ankrom Moisan Architects Inc.; member since 2011
- Stan Vande Bergh, CSI; Portland Bureau of Water ; member since 1993
- Richard Wickizer, CSI, CDT; Wickizer & Associates; member since 2012
- Nick Wutzke, CSI; Halfen USA; member since 2012

## CSI NATIONAL NEWS

## Institute and Region Chapters

[CSI National](#)

[CSI Northwest Region](#)

<b>Chapter Name</b>	<b>Contact</b>	<b>Phone</b>	<b>Monthly Meetings</b>
<u><a href="#">Big Sky</a></u>	Jan O'Brien	406-245-6363	Last Tuesday
<u><a href="#">Capital</a></u>	Chris Veit	503-390-0291	Third Thursday
<u><a href="#">Cook Inlet</a></u>	Mark Hughes	907-267-5163	Third Tuesday
<u><a href="#">Idaho</a></u>	Karen Morris	208-343-3620	Third Tuesday
<u><a href="#">Mt. Rainier</a></u>	Bob Kenworthy	253-931-4904	First Thursday

Puget Sound Andrew Estep 206-382-3393 Second Thursday  
Spokane Georgia Spencer 509-328-2771 Second Thursday  
Willamette Valley Alorie Mayer 541-485-0922 Last Thursday

## INDUSTRY NEWS

# UO School of Architecture & Allied Arts

### **Thursday, February 18 - 2016 A&AA Recruitment Fair**

We invite professional organizations who are looking for the best and brightest of our students to fill jobs and internships to join us in Lawrence Hall on the Eugene campus. This Fair is a great opportunity to meet and network with talented and creative UO students in all 10 A&AA disciplines. Meet our students and build the future of your organization. On Wednesday, 2/17 space is available if you would like to host an information session for students before the Fair, and Friday, 2/19 we can provide space for you to conduct interviews on campus with students.

### **Friday, April 22, 2016 - 13th Annual Career Symposium**

Join us at an all-day event in Portland at the historic White Stag Building, with opportunities to connect with students in roundtable discussions, portfolio/resume reviews, practice interviews, and other networking activities. One of those pivotal experiences that is so valuable in a student's career development - come and make a difference!

---

## Women in Trades Career Fair

May 14, 2016  
9AM to 3PM

[LEARN MORE HERE >](#)

---

## SDA CANstruction

*Kim Moffat, CDFAs, SDA Portland Chapter President*

This year we are very excited to celebrate our 20th Annual Canstruction Design and Build Competition to be held in May 2016 at Pioneer Place. Our competition has been supporting the Oregon Food Bank for 20 years and last year we passed the 1 MILLION meals mark.

If your company or organizations would like to participate in the 2016 event, please contact Chris Mount at [canstruction.portland@gmail.com](mailto:canstruction.portland@gmail.com). The Canstruction Competition is open to all companies which would like to participate. Each team must have one company from the A/E/C community. We encourage companies to team up with other organizations and companies for this event and we are available to assist you in finding additional companies for your team.

The kickoff meeting will be held on January 14 at Dull Olsen Weekes - IBI Group Architects at 5:30 pm. During this event we will be presenting an introduction to the 2016 competition and we will be answering any of your questions. Please RSVP if you are coming to the meeting.

[DOWNLOAD 2015 ENTRIES HERE >](#)

[DOWNLOAD ENTRY FORM HERE >](#)

---

# Professional Organizations

[Construction Specifications Canada \(CSC\)](#)

[Construction Specifications Institute \(CSI\)](#)

[Specifications Consultants in Independent Practice \(SCIP\)](#)

---

## Allied Organizations

Got an addition to the list? Send it to [portlandcsi@gmail.com](mailto:portlandcsi@gmail.com).

### Design

[American Institute of Architects - Portland \(AIA\)](#)

[American Society of Interior Designers \(ASID\)](#)

[Cascadia Region Green Building Council \(GBC\)](#)

[National Association of Office and Industrial Properties - Oregon \(NAIOP\)](#)

[Society for Marketing Professional Services - Oregon \(SMPS\)](#)

[Architectural Foundation of Oregon \(AFO\)](#)

### Technical

[American Society of Mechanical Engineers - Oregon \(ASME\)](#)

[American Society of Plumbing Engineers - Portland Chapter](#)

[Building Owners and Managers Association International - Oregon \(BOMA\)](#)

[International Facilities Management Association - Oregon & SW Washington Chapter \(IFMA\)](#)

[Portland Building Enclosure Council \(BEC\)](#)

### Construction

[Associated General Contractors - Oregon-Columbia Chapter \(AGC\)](#)

[Construction Management Association of America - Oregon \(CMAA\)](#)

[Design-Build Institute of America - Northwest Region \(DBIA\)](#)

[Home Builders Association of Metropolitan Portland \(HBA\)](#)

[Oregon Remodelers Association \(ORA\)](#)

[National Women in Construction - Portland Chapter #54 \(NAWIC\)](#)