



THE PREDICATOR

Knowledge for Creating and Sustaining the Built Environment



VOLUME 50
ISSUE # 01
SEPT 2010

WHAT'S INSIDE:

President's Message

Page 2

Portland CSI
Goes Gold

Page 3

Ken Searl Remembered

Page 3

What Do You Say

Page 4 - 5

Perky's Notes

Page 6

Golf Tournament Recap

Page 7 - 8

Board Meeting Notes

Page 9

Membership

Page 10

Certification/Events

Page 10

Region Conference

Page 11

News From the Institute

Page 12

From Cascadia
Chapter USGBC

Page 13

From Portland AIA

Page 14

The Contacts

Page 15

Want to skip to a specific
article just click on it!



Portland CSI

Goes Gold!

1960 - 2010

The Portland Chapter of The Construction Specifications Institute
is celebrating our **50th Anniversary!**

Join the fun as we commemorate **50 years!**

- ◆ Toast to the Past Presidents
And maybe a roast or two!
- ◆ Five decades of CSI memories
Could that really be a photo of you?
- ◆ Special Guest, Chet Orloff
Portland perspectives over 50 years

Tuesday, September 14, 2010

Governor Hotel

614 SW 11th Ave

Portland, Oregon

5:30 to 8:30 PM

Cost: \$50.00 per person

Please RSVP by September 7

click: www.portlandcsi.org

call: Jane at 503-805-2500

e-mail: jane@portlandcsi.org

Join Us September 14 to Celebrate!

PRESIDENT'S MESSAGE

By: Kaye Kloster, CSI



September 2010

September is the month I consider I formally begin executing the full responsibilities of the president of the Portland Chapter of CSI. With our **50th anniversary** celebration as our September meeting I feel completely overwhelmed and unprepared! Several of our 26 past presidents will be attending – including: **Les Seeley, John Lape, Jimmie Luey, and Dale Kuykendall.** I hope all of our members will try to attend this event. The value of membership in CSI and the impact on the lives of those who served as president, on the Board or on a committee will be quite evident. An added benefit is the camaraderie and friendships that have lasted beyond CSI events and meetings. I am really looking forward to the evening.

It isn't often that a 50th year milestone is reached in any organization, relationship or institution especially now when society expects instant gratification. The idea of "overnight success" usually involves years of hard work, dedicated effort, and trial and error. My parents have been married 58 years. Family and friends celebrated their 50th anniversary with a wonderful party. It was a milestone in their marriage. It was definitely something to celebrate. However, I know, the next day they still had to "work" at their relationship. Other great and exciting events have come and gone since their 50th anniversary as well as difficult decisions and disagreements. Since that has been the only recent 50th anniversary celebration I have been involved in I couldn't help relate the two. Our Chapter will also sweep up the confetti and move forward into the future.

So what happens after the 50th anniversary of our Chapter of CSI? On September 23rd the CSI NW Region Conference will be held in West Yellowstone, Montana. Members from all nine Northwest CSI chapters will gather for four days of leadership and professional seminars as well as a Yellowstone tour and optional rafting trip. Our Chapter meeting in October will be a tour of Portland State University's Lincoln Hall recently renovated by Howard S. Wright Constructors. We want to continue to change and provide meaningful programs and educational opportunities (and some fun) for our membership and the construction industry professionals throughout the Portland metro area and beyond. There will be changes in the Chapter newsletter, committees and programs. Will everyone like the changes? Probably not. Personally, I enjoy the second Tuesday evening meetings. However, our attendance has been dwindling. So in December instead of a dinner meeting we will be having a lunch meeting between 11:30 - 1:00. Find out how Hoffman landed then hoisted a Boeing 747 on top of the building that will eventually be a water park in McMinnville.

Bend Update

I promised an update on the CSI meeting/tour of Miller Elementary School in Bend on August 4th. It was a successful first time event in Bend. Thirty-five attendees toured five different areas around the school beginning with an introduction by Steve Hill, principal. I am very grateful to Steve Hockman, Steele Associates, for his time and effort to help organize the event. Sponsors included: Kirby Nagelhout Construction, Ford Graphics, Northwest Playground Equipment, Control Contractors, Mike's Fence, E2 Powered Systems and Aurora Painting. I know some of the Portland Chapter members regularly travel to Bend – I will make sure the next CSI meeting in Bend is announced well in advance.

A handwritten signature in black ink that reads "Kaye". The signature is fluid and cursive, written over the bottom right portion of the text.

PORTLAND CSI GOES GOLD

Chet Orloff



1960 - 2010

Our distinguished guest, Chet Orloff, is an adjunct professor of Urban Studies and Planning at Portland State University and an instructor at the University of Oregon School of Architecture. He is also principal of Oregon History Works, a consulting firm for historical applications in design Chet will lead our look at 50 years of Portland milestones.

Oregon History Works/Museum of the City
3332 N.W. Savier Street, Portland, Oregon 97210
503.223.5932, chetorloff@msn.com

KEN SEARL REMEMBERED



Ken's always been there, for us all. I cannot describe my feelings when the manager of the manufactured home park where Perky and I last saw him said he had died some time ago.

What do I do - what can I say. For now, I'll just copy the stuff from www.fcsinet.org.

His Fellowship was presented in Chicago; the citation read:

"In recognition of your willingness and ability to share your wealth of information at seminars and by your prolific publication of timely educational articles on all phases of construction technology written in a style and language understandable to all, you are advanced to Fellowship in the Institute on this first day of July 1990."

KENNETH L. SEARL was born at Douglas, Wyoming in 1918. He was educated at the U.S. Navy Electrical School in Wahpeton, ND in 1944 and spent a number of years in various aspects of building inspection. He

then joined WEGROUP Architects for 28 years as specifier and architect's representative.

Searl is a dedicated technical researcher and is highly respected for his more than 200 published articles on construction specifications and related matters. Distributed to several CSI Chapter Newsletters throughout the United States under the title of "BS by KS, Basic Specs by Ken Searl," he has had a lasting impact by improving the technical quality of documents prepared by many leading specifiers.

Searl was one of the few specifiers who prepared his own elevator and finish hardware spec sections. Working with another specifier he prepared and used a computer menu driven finish hardware schedule with takeoff ability.

In 1997 he presented a paper on concrete slab moisture at a seminar with over 300 attendees. The main discussion was whether or not to place a sand fill under a concrete slab on grade (his findings indicated not to place a sand fill). As a result he has been called in for consultation on several litigations involving problems where slab moisture caused a covered floor problem.

I'll miss him. ~ Lee Kilbourn, FCSI, CCS, FAIA

WHAT DO YOU SAY

What's Been Said for the Last 50 Years?



A Selected Review

Since the Portland Chapter CSI was founded in 1960 there have been significant changes in our industry. This is a short review of some changes that come to mind.

Corporate America:

Four months after our Chapter was founded in 1960, President Kennedy

took office and a sea change swept the country. Young was in, old was out. Mergers, acquisitions, consolidations, conglomerations, and divestitures have changed the playing field and have played the players like – well, less than pawns. Goodbye to loyalty on both sides. Hello to good benefit packages and individual retirement accounts (for the working middle class). The surviving corporations are now global in outlook and operations.

Electronic Media: September 1960: Bill Gates was 4, about to turn 5 next month. 25 years later (1985) PC's and Apples began to appear on everyone's desk. The world-wide-web was introduced in 1991, and seven years later email is a necessity and design is computer-based. In 1988 G2 digital cell phone technology was introduced. 20 years of development (G3 protocol), miniaturization, infrastructure and we all have mobile phones that are smaller and can do 100 times what Captain Kirk's "communicator" did. Reprographic services have traded ammonia for bits & bites. Paperless construction documents and management and electronic conferences are reality.

Communications:

1960: Letters, messengers and telephone calls.

1985: Fax machine is in common use. Expectation of 1-day response time.

2010: Email PDA & CellPhone, interactive project websites, Blog, FaceBook, Twitter, and a lot of unsubstantiated misinformation. Wait-time approaching zero.

CSI Standards: In response to the need for standards that apply to electronic technology, the Institute expanded MasterFormat™ and UniFormat™,

and is developing the International Framework for Dictionaries (IFD) and OmniClass™. GreenFormat™ is also being developed in response to sustainability and environmental concerns.

Existing Conditions: In 1960 we were unfortunately unaware of the potential hazards our built environment created. 30 years later a sub-industry, hazardous materials investigation and abatement, was well established, regulated and insured. And building materials were by then far more benign. Sick-building syndrome turned our attention to controlling emissions from building materials. Today the challenge is for manufacturers to be more environmentally responsible about materials extraction and manufacturing processes.

Waste Material Management: The term "management" did not enter the architectural vocabulary until the mid-80's when everything had to be managed, self-managed, middle-managed, and micro-managed. Before the oil crunch in the mid-70's we were still in post WWII pig heaven, the cheapest, most convenient, consume-and-throw-away society. Great economic times in the 80's helped sustain those attitudes. Will the current deep recession instill conservation? During the past decade the Portland area construction industry has substantially reduced construction waste by salvaging, reusing, and recycling waste materials. In many cases over 95 percent is diverted from landfill.

Concrete: Subtle advances in chemistry and physics have advanced concrete for buildings. Admixtures produce self-consolidating concrete. Diamond deposition on metal is now used for dry floor grinding and polishing.

Engineered Wood Products: The year was 1969 (our 9th year); Apollo 11 lands on the moon and Trus Joist Corporation manufactures the first wood I-beam. By 1980 oriented strand board (OSB) is an economical alternative to plywood. Laminated veneer lumber and parallel strand lumber were introduced about the same time. Environmental concerns in the past ten years require wood from sustainably managed forests, recycled content

WHAT DO YOU SAY

in products like MDF, very low formaldehyde emissions, and more efficient framing methods.

Rain Screen Design: Experienced designers and builders in the Pacific Northwest knew a few simple things: single-wythe masonry walls leak; use two layers of good building paper; flash to protect and drain. I think it rained just as much and the wind blew just as hard then as now. Sometime in the 80's folks got careless with EIFS. It only took only a few years, and then you couldn't say EIFS or asbestos in polite conversation. By year 2000 you had to be doing the rain screen tango: breath here, don't breath there, insulation in, insulation out, sealant not sticking, Darling? Fortunately building science is catching the up-beat, playing fantastic vapor-drive instruments and other forms of synthesized reality. Oh, dare I mention the proper undergarments our buildings wear for this dance?

Firestopping-Smokestopping: In 1960 safing insulation was used in curtainwall construction. In the 70's smoke compartmentation and horizontal exiting was required in certain building types; we plugged holes with gypsum board and vermiculite-plaster. A couple of fires in Los Vegas raised life safety awareness and evermore stringent requirements for smoke-free egress. By the 90's life safety plans were required that showed all combination fire-smoke dampers in air ducts, fire- and smoke-stopping details, and increasingly complex fire detection-alarm-HVAC-control diagrams.

Door Hardware: Hardware was so simple in 1960; even an architect could figure out 95 percent of it, well a very careful architect. Similar to our firestopping history, the interrelationship of exit access, security, and fire-smoke control is increasingly demanding and complex. In the mid-80's microprocessor controlled electric hardware solved the problems (and opened the door to new possibilities). Today computerized integrated building controls can provide access control and monitoring, emergency egress, fully integrated with other building systems.

Glass: Why do folks still say "plate glass"? Perhaps force of old habit. The float glass manufacturing process was not licensed in the USA until 1962, two years after our founding. Although insulating glass

and laminated glass were available, almost all architectural glass in 1960 was clear, uncoated, non-heat treated, monolithic glass. Regulations and codes for safety and energy conservation changed that. Today's high performance buildings depend on daylighting and very high performance glazing. It will be hard to find a glazing unit that has not been tinted, patterned, heat treated, coated, laminated, insulated, gassed, electrified, or photo-Voltaicized (sic) in future buildings. Today's glass protects us from heat, cold, wind, UV, IR, burglars, bullets, blasts, hurricanes, fires, and noise while providing natural light and views.

Paints and Coatings: A typical can of paint in 1960 could contain lead-carbonate, lead-chromate, other chromium compounds, mercury compounds, and a high percentage of VOCs like naphtha. Regulations since 1977 (lead prohibited) have helped the paint industry eliminate hazardous metals and develop new resins that require little or no VOCs. High durability coatings are now commonplace on manufactured and fabricated building products. Most recently fabricators and specifiers show a preference for the thermally-fused powder version of these high performance coatings.

It's time to stop. Of course, all products and systems could not be discussed. These were selected from topics at Specifiers' Share Group over the past five years. And there may be some errors or misunderstandings. I invite you to send your product history or comments to me. I would very much like to hear from someone on the topics of HVAC Design or Net Zero Energy Design.

By Fred Herbold, CSI CCS, editor

The Twitter logo is displayed in a light blue, rounded rectangular box. The word "twitter" is written in its characteristic lowercase, rounded font.

CSI Portland Chapter is now on
Twitter!

[Come check it out!](#)

PERKY'S NOTES

By: Perky Kilbourn, CSI



Recollections by Perky of 45 years as a CSI Member ...

In June 1965 Lee got a job at Wolff Zimmer Associates and I got two part-time jobs at the University of Oregon Medical School (now OHSU). I rode the bus to OHSU and Lee walked to work. The month Lee started Don Stetson invited Lee to his first CSI Meeting. That October, the second Region meeting was held at the Congress Hotel in down town Portland. Two years later, he got elected to the Board. At Lee's first Board meeting he got elected President. In 1968, with the President, I went to the Region Conference at the Country Squire Hotel in Coburg (near Eugene). I brought along reading material - but not enough - there was no program for the wives (we were not called "spouses" yet). Lee figured it would be a short meeting so asked me not to leave. Lee's meeting took all day but we had a nice dinner.

Sometime during that weekend or the following week, I learned that we would be going to Denver for the CSI Convention. I was delighted because this convention had a program for the wives. The wives got to see a fashion show of Native American Clothes. The composition of these clothes was discussed and I found it fascinating. The second activity for the wives was a drive up to a ghost town outside of Denver. Most of the wives found this great because they could get things for their families. I don't shop so I just wandered in and out of shops and was surprised at some of the price tags.

In 1969 the Region Conference was in Portland at the Cosmopolitan Hotel. I don't remember anything about that 1969 Region Conference other than Ellen (Kilbourn) Onstad arrived on the scene that year. I also remember that Lee and I continue to attend CSI Conventions for these many years.

In 1972 Portland Chapter was trying to get the National Convention in Portland in 1974. Our slogans were:

Washington DC in '73 Portland, OR in '74.

It worked; Portland hosted the National Convention in 1974.

I was very involved with that National Convention and thoroughly enjoyed myself. We stayed at the Hilton, the Headquarters Hotel and Lee's mother watched Ellen and Laurie (our older daughter who is not a CSI member). They went on the Youth Program and seemed to have a good time.

The 1978 Region Conference was at Timberline Lodge on Mt. Hood, with snow on Sunday as we were getting ready to leave. Pictures were taken of various CSI members helping to put chains on tires.

In 1979, Portland Chapter hosted its 20th Anniversary Party. Again Lee and I spent the weekend at the hotel rather than trying to drive home after the Party. As I remember it, it was a "Great Party". I have pictures from the February-March 1980 issue of Symposia as well as The Predicator, for documentation.

1983 was a memorable year because Portland Chapter was the host for the Region Conference, held at Rippling River Resort. I don't think I had to do anything special though I did decide staying at a resort was great. Soon we attended a Tri-Region conference at the Asilomar Conference Center in 1985. Lee's mother knew about Asilomar Grounds as she had stayed there. She was correct it was lovely. Portland Chapter then utilized resorts for Region Conferences in 1990 at Shilo Inn at Seaside, and in 1998 at Salishan Lodge.

It has been exciting to watch Lee receive awards for the specifications which he had written. Since I had typed specifications before word processors I knew what effort was required. Actually, one only needed to type those paragraphs which had not been prepared previously. It is so much easier now with word processors.

It was fun and easy to write about the various conferences and conventions we attended. Some of these letters to the editor and articles were published in The Predicator. When wives (or spouses) were encouraged to come to CSI dinner meetings, I began writing reports of the programs at these dinner meetings. Occasionally, if something about construction specifications got my attention I would write about it for an article for The Predicator. I was pleased when I was asked to write Perky's Notes on a regular basis for The Predicator. Coordinating the book on Mary Alice Hutchins; with another two scholarships being given this year has also been rewarding.

I will end these notes with my comments about the book "On the Wealth of a Nation" by P. J. O'Rourke which discusses an older book "An Inquiry into the Nature and Causes of The Wealth of Nations" by Adam Smith. Smith's main theme seems to have been to change the way institutions obstruct people from earning money with a method which will give wealth to the people in a nation.

I look forward to tomorrow, next week, next month, and next year.

GOLF TOURNAMENT RECAP

WE HAD A BLAST GOLFING AT LEWIS RIVER

This year's Annual CSI Golf Tournament was held on Friday, August 13th at Lewis River Golf Course in Woodland Washington. We had another great year for golf. We hope all that attended enjoyed their day with us and those that could not this year will be ready for next to come on out and have some fun with us. We could not have asked for better weather and a better group of people to spend the day with. For a Friday the 13th, it was a very fun day and very lucky day for some.

We had some stellar golfing, with a score of 56, Deamor & Associates took 1st place in the tournament. Our second place went to Skanska USA with a score of 57 and 3rd place went to Sparling with a score of 58. We had a team that gave it their all and had a fun time playing, with a score of 75, the "GAVE IT THEIR ALL" prize went to Willamette Graystone. Single player prizes went to Dena Cook, she won both womens prizes for the KP on #17 & LD on #5. The men's went to Mike Moyer for KP on hole #7, and Mark Butler for the LD on hole #13. Straight Drive contest went to Chris Thorn on hole #8. We had fun with a new game called "Furthest From the Pin" and had two winners, they were Rich Brooks and Gordon Harvey.

We added some different things this year. Hopefully everyone thought they were fun and worth while. We tried some licorice rope. Instead of buying string, like some tournaments do, which you use to put you close to the pin, we did licorice. One, no scissors needed, and two, you can eat it. Hopefully it was used prior to eating. We also had the ladies from American Medical Response come out with their beer goggles. I had to watch for a little bit and I must say it was entertaining from my view. The money collected by them at the hole along with other monies raised by this tournament will go towards the CSI education and scholarship funds. Our future is out there and CSI wants to be a part of helping the next generation in their learning of the Architectural, Engineering & Construction Industry.

On behalf of CSI, Dena Cook and myself I would like to THANK YOU all for coming out and making this a great tournament during a tough year for many. I saw smiles everywhere I looked. I am very pleased that we could put this tournament

together for you and make it fun and exciting. We have many "Thank You's", many sponsors manned their tee box this year and I THANK YOU ALL for doing that. It can be a lonely gig while waiting in between teams, and with a modified shot gun, there was a little longer wait sometimes, but I hope you all found it worth while and enjoyed being out there. It is a perfect way to meet all the players and have fun too. We do try and get a little work in on the course and do some networking here and there. Your contribution out there makes a huge difference and makes the tournament fun for all. Please see the list of our sponsors that manned those tee boxes below and on the CSI web page www.portlandcsi.org.

I would like to THANK our Lunch and Dinner Sponsors.



DeaMor Associates for our hot dogstand, full bellies make happy golfers I am told. I saw many happy golfers with dog's in hand. Prefect way to start the tournament. Thank you from the bottom of our bellies.

Dinner was hosted by **SKANSKA** Skanska USA & Turner **Turner** Construction. We had yummy Chicken and Ribs with all the fixings. They filled our bellies for the ride home. Wonderful way to end our evening. Thanks to them for an awesome dinner and again from the bottom of our full bellies.

Our Tee Box Sponsors:



Hole #1 Precision Images, was manned by Richard Silver. They raffled off a Wii console and games package at the end of the night.

Hole #3 was manned by **Ideate** Tony DiVincenzo with Ideate, **Ideate** From Ideas to Reality Inc, who was very nice in sponsoring one of the beer kegs.



Hole #4 was sponsored by McGraw Hill Construction Dodge, many of you saw Ellen Onstad at registration and driving around with me checking up on everyone.

Hole #5 had Mr. Paul Rydell with The PPI Group, he knew what a hot day at the course needed, he brought a cooler of Ice Cream Bars for us all, I hope no one missed the ice cream, I know I didn't.



GOLF TOURNAMENT RECAP

Hole #7 was manned by Frank Mendez and Marc Sandin with Fortifiber Building Systems Group who had Golf ball prizes for KP.



Hole #9 was sponsored by Willamette Print & Blue Print.



Hole #10 had Linda Joens & Anna Anderson with Cambria USA, who were out there with our second keg of beer & what goes great with beer, Pretzels, Yum.



Hole #11 was Kone Elevator Inc., which had Chris Amistadi & Steve Christianson manning, who later in the evening raffled off a driver.



Hole #12 of course was the AmericanMedicalResponse group, manned by Georgia Katsirubas & Rhonda McCord, they collected the Beer Goggles donation. You had to admit that was funny.



Hole #13 was manned by Weller Associates, Inc. our CSI Treasurer Chris Irwin who is with Weller Associates, Inc. & her helper bee Robin Forrer. They did the "Furthest from the Pin" game and took pictures of the teams as they came through.



Hole #14 had Denise Latham & Jerry Rundorff from Ford Graphics playing Black Jack with our players, winners got a LED flashlight.



Hole #17 was manned by Thomas Bertrand & Marc Seguela from Professional Roof Consultants, who sponsored the hole in one contest, \$10,000 prize, but alas no winners this time, maybe next year.



Our LD & KP Sponsors were Benson Industries LLC, Custom Windows & Daily Journal of Commerce.



Again, I want to Thank you all for your support and participation it means a lot to me personally and I hope you all had a great time this year and in years past. I started working on the CSI golf tournament in 1997 and took it over in 2000. 13 years is a very long time and many of you, I have had the pleasure of knowing throughout those 13

years. It has been awesome, and meeting all the wonderful people I have, has truly been a great experience. After 13 years and this tournament being Friday the 13th, I have retired as the CSI golf tournament chair. This was a tough decision and I will miss it, but I won't be out of site or far, and now maybe I will learn to play the game. It has been a great ride, thank you all for making it so.

Please send any suggestions you have for next year, or comments about the event and venue to me at ebitterman@precisionimages.com. I will be sharing your comments with the next chair, which if anyone is interested, is open right now and of course if you want to be on the committee for the golf tournament, let me know that too. Your input is important to us and helps us make a better event for you.

Erica Bitterman-Ryon, CSI, SDA, ASPE
Precision Images
CSI Golf Tournament Chair – Retired

Dena Cook, CSI, CDT, LEED AP
Zimmer Gunsul Frasca Architects
CSI Golf Tournament Co-Chair

Want to help plan the monthly dinner meetings?

Join the programs committee, every 4th Tuesday of the month.
New Hours 11:30 am - 1:00 pm

For more information contact Jordana Goff
jgoff@peci.org

facebook

CSI Portland Chapter is now on Facebook!

Come check it out and become a fan!

[Click here to check it out!](#)

BOARD MEETING NOTES

JULY MEETING NOTES

July 6, 2010

CALL TO ORDER: The meeting was called to order at 12:03 by President Kaye Kloster at Ford Graphics Conference Room. A quorum was present.

PRESENT: Fred Herbold, Glen Miller, Corey Morris, Jane Ellsworth, Russ Pitkin, Steve Gray, Scott Martin, Amy Clements, Kaye Kloster, Chris Irwin, Bud Henson, Alexander Lungershausen

ABSENT: (none)

CONSENT AGENDA: A motion was made and passed to accept the consent agenda.

Treasurer's Report: Fred handed out the financial report for year end and we did well considering the economy. He then handed out a draft budget for the 2010/2011 fiscal year. We'll no longer have region assessment to pay. There will be two region conferences this year and no institute convention. Our dues went down \$5, so last years membership revenue will be different than this years. After much discussion, including the ID Forum and Golf Tournament, we made a few changes to the budget and it is now balanced. A motion was made and passed to accept the 2010/2011 budget.

Committee Reports

Awards - Nothing to report at this time.

Nominating Committee - completed task for the year.

Emerging Professionals - does our chapter want to donate money for the endowment? This endowment is for the institute not the chapter. A motion was made and passed to donate \$100 to the institute endowment.

Programs - was all about the 50th Anniversary in September. She handed out a magazine that DJC will do for us to handout at the meeting and use for promotion of CSI. She also handed out the logo that was created for the Anniversary that will be used on anything printed. Chet Orloff is going to be our MC for the night. Kaye would like to add "This day in history..." in the *Predicator* to show what CSI was doing 50 years ago and to give the membership some CSI facts.

Education - Nothing to report at this time

Industry Forum - Kaye is concerned about the key note speaker for this event. She would like to get a good/interesting speaker and get them on board as soon as possible. She would like everyone on the board to bring a name to the next meeting.

50th Anniversary - the committee has joined with the program committee and will continue to meet through the summer time.

Strategic Partners - Nothing to report at this time.

Website - nothing to report at this time.

Certification - 16 people took the class, 15 took the test 9 passed, 5 did not and one has not responded.

NEW BUSINESS

Kaye asked the board to review the minutes from the planning session.

Design and Plan architecture would like someone to attend a meeting on July 12th - Alexander will attend on CSI's behalf.

NW Region Conference - Yellowstone in September 23-26. The chapter will pay for Fred & Kaye to attend.

Fred is going to have a Communications Committee meeting. It was the Publicity committee and has now been renamed. This is a mandatory committee for the President-elect to chair. They are having their first meeting after this board meeting. They are going to be working on members for the committee, focusing publicity outside the organization via various means and *The Predicator* editing and layout/graphics along with contributing articles. Alexander is going to check as he has a graphic designer that might help with design at no cost.

Kaye is helping the CSI committee in Bend to put on a tour of Miller Elementary with Kirby Nagelout on August 4th to get more people interested in CSI. The tour will be free. Anyone on the board interested in helping, contact Kaye.

OLD BUSINESS

Emerging Professionals check for \$100 needs to be sent to Institute.

ACTION ITEMS

- Amy will set up a webinar with Sheri Knowitz for board members
- Kaye to call Karla to find out about strategic partners
- Chris to update the budget and send to Jane for distribution
- Jane to follow up with Lee on where to send EP check for \$100
- Jane needs to schedule signing session at the bank with Kaye and Chris
- Corey to put NW Region Conference info from Idaho website onto the Portland website
- Board to bring the name of a keynote speaker to the next meeting

Next meeting will be on Tuesday, August 3rd, starting at noon, at Ford Graphics.

Adjourned at 1:20 pm

Respectfully Submitted,
Amy Clements, Secretary

MEMBERSHIP

Renewing & New Members

June 2010

- Dean E. Aldrich, CSI, Esq.; The Aldrich Law Office; member since 1996
- Richard E. Alexander, CSI; Stoel Rives; member since 1985
- Doug Allen, CSI, CDT; ASSA ABLOY Door Security Solutions; member since 1999
- Mike Baker, CSI; Mutual Materials; member since 1997
- Dena M. Cook, CSI, CDT, AIA, LEED AP; Zimmer Gunsul Frasca Architects, LLP; member since 2003
- Dan J. Crates, CSI; STO Corp.; member since 2009
- Art Davis, CSI, CDT; member since 1992
- Anthony J Fennig, CSI; PKA Architects; member since 1993
- Etta Goerl, CSI-I; member since 2010 - **NEW**
- Ronald P. Gronowski, FAIA, CSI; Zimmer Gunsul Frasca Architects, LLP; member since 1993
- James L. Helton, CSI; Murray, Smith & Associates; member since 2000
- Kathy Hempel, CSI, CCCA; DeaMor Associates, Inc.; member since 2009
- Craig Jaeger, CSI, CDT; Jaeger & Erwert General Contractors; member since 1986
- Brian D. Lee, PE, CSI; PACE Engineers; member since 1997
- Glen A. Miller, CSI; GA Miller Architecture; member since 1997
- John A. Moellenhoff, CSI; RDH Building Sciences, Inc.; member since 2010 - **NEW**
- Jody R. Moore, CSI, CDT; DeaMor Associates, Inc.; member since 1984
- Ian Murphy, CSI, CDT; Western Allied Systems, Inc.; member since 1992
- Tim Nordstrom, PE, CSI, CDT, LEED AP; member since 2005
- Dan Quatier, CSI; Interior Technology/Modernfold Northwest; member since 2007
- Douglas W. Sams, CSI, CDT, AIA, LEED AP; Zimmer Gunsul Frasca Architects, LLP; member since 2002
- Kathleen S. Smith, CSI; RDH Building Science Inc.; member since 2010 - **NEW**
- Nathan Weibel, CSI-I; Henry Company; member since 2010 - **NEW**
- Bryan Christopher White, CSI; Professional Service Industries, Inc.; member since 2008
- James A. Wright, CSI, CCS; member since 1995
- Eric Youngson, CSI-S; member since 2010 - **NEW**

CERTIFICATION/EVENTS

Fall CDT and Advanced Certification Exams

September 20-25, 2010

Learn more at csinet.org or contact our Certification Chairs, Michael Madias or Kathy Hempel.

October Meeting & Tour

Tuesday, October 12, 4:30 pm

Sign-Up For This Popular Tour: www.portlandcsi.org

Lincoln Hall is a nearly 100-year old PSU campus treasure that was the first building occupied by the University in the South Park Blocks. Laden with asbestos and ultimately condemned, PSU, Howard S Wright, BOORA Architects and upwards of 530 Oregon trades people used stimulus funding to restore light wells, creatively re-laid the building's foundation, turned an unused mechanical room into a performance space, and completed seismic, electrical, plumbing, heating and cooling system upgrades.

Now home to the PSU's Center for Performing Arts, before photos displayed along the tour will show the previous layout and state of the building as we learn about the major renovations that have transformed Lincoln Hall while retaining its historic feel and features and earning LEED Gold certification.

✓ [Checkout YouTube Video](#)

✓ [Checkout Portland Business Journal for Facts](#)

CHAPTER EVENTS

Sept. 13 **Membership Committee Meeting**
11:45 am at Macadam's
5833 SW Macadam

Sept. 14 **50th Anniversary Celebration**
5:30 pm at the Governor Hotel
614 Southwest 11th Avenue

Sept. 28 **Program Committee Meeting**
11:30 at Portland Energy
Conservation, Inc.
1400 SW 5th Avenue

Oct. 12 **Chapter Meeting & Tour of PSU
Lincoln Hall**
4:30 pm at the Governor Hotel
614 SW 11th Avenue

Nov. 9 **Chapter Meeting**
5:30 pm at the Governor Hotel
614 SW 11th Avenue

Dec. 14 **Chapter Meeting**
11:30 am **LUNCHTIME** at the
Governor Hotel
614 SW 11th Avenue

Jan. 11 **Chapter Meeting,
Economic Forecast**
5:30 pm at the Governor Hotel
614 SW 11th Avenue

REGION CONFERENCE



Earth, Wind & Fire-Getting Back to Nature

Construction Specifications Institute

2010 Northwest Leadership/Region Conference

Hosted By
Idaho Chapter & Big Sky Chapter

September 23-27, 2010

Holiday Inn Sun Spree Resort
West Yellowstone, Montana

Make this a "family" vacation.
Make your reservations early.

Thursday:

Leadership conference with Mark Levin, Walt Marlowe and Susan Evans

Friday:

Educational sessions; Earth, Wind and Fire - Getting Back to Nature.
There will be a Western BBQ in the evening.

Saturday:

An all day guided tour of West Yellowstone Park, lunch will be provided.
The awards banquet will be held in the evening at the
Union Pacific Railroad Station.

Sunday:

Coordinating council meeting.

Register Now at: <http://idahochaptercsi.org>

Conference
Sponsors:



NEWS FROM THE INSTITUTE

Educational Opportunities from CSI Weekly:

CSI Webinar Series:

Incorporating LEED into Project Specifications

This 3-part course provides attendees with an understanding of the importance of specifications in documenting LEED requirements following CSI's recommended practices and formats. The course also explains the need for an integrated team approach to achieve LEED/sustainable goals on a project and the critical function of the specifier on that team. Attendees will learn how to find, evaluate and specify appropriate green products, materials, systems and construction procedures and, lastly, how to implement these specified techniques during the construction phase.

The sessions will be September 9, 16 and 23, 2-3:30pm ET.

[Learn more, or register now.](#)

Sept. 14 Webinar:

Negotiation Skills for Construction Professionals

After receiving high marks at CONSTRUCT2010, Chuck Doran brings "Negotiation Skills for Construction Professional" to CSI Webinars. Based on principles developed at the Harvard Negotiation Project and the bestseller "Getting To Yes," this webinar is designed to build your capacity to negotiate collaboratively, producing better outcomes for all construction teams while enhancing the long-term working relationships between architects, specifiers, owners, contractors, product reps and manufacturers. Join Chuck Doran, a Senior Negotiation Instructor with MWI, for a 90-minute webinar using examples taken from the job site that will introduce you to a systematic and strategic approach to decision making that will help you effectively negotiate change orders, contracts and create better deals with business partners, contractors and clients. [Learn more, or register now.](#)

Sept. 21 Webinar:

Guide Specifications: A Marketing Tool for Manufacturers and Sales Reps

Building product manufacturers often provide guide specs to specifiers for use as starting points in the writing of project specifications. A simple guide spec is a useful tool, but much more can be accomplished when a manufacturer understands the guide spec's potential. A well-

crafted guide spec, employing CSI's principles of specifying, can educate the design professional, hold the keys to successful installation, and build trust between the manufacturer and the design team. This course, led by two experienced specifiers with expertise in guide specification writing, will help suppliers identify whether a guide spec would be a valuable addition to the product literature. The course will offer insight into preparing documents that will be valuable to design professionals, contractors, and customers.

[Learn more or register now.](#)

USGBC Education Provider Workshop:

Incorporating LEED into Project Specifications

November 19, 1 - 5:30pm

This course provides attendees with an understanding of the importance of specifications in documenting LEED requirements following CSI's recommended practices and formats. The course also explains the need for an integrated team approach to achieve LEED/sustainable goals on a project and the critical function of the specifier on that team. Attendees will learn how to find, evaluate and specify appropriate green products, materials, systems and construction procedures and, lastly, how to implement these specified techniques during the construction phase. All approved courses offered by USGBC Education Providers are approved for credit toward LEED Professional Credential Maintenance. [Learn more, or register now.](#)

Two More Items from CSI Weekly:

Hot Jobs

CSI's [Career Center](#) posts new openings in the construction industry every week! This week's hot jobs include [Specification Writer](#) (St. Louis, MO); [Energy and Sustainability Manager](#) (Cambridge, MA); [Project Manager, Construction](#) (Chicago, IL); [Building Inspector](#) (Pearland, TX). Visit the [Career Center](#) to learn more about these jobs.

CSI Support of ConsensusDOCS Benefits Members

In July 2010, CSI and four leading construction industry associations signed onto the ConsensusDOCS effort, joining 24 other construction industry organizations. CSI members receive a direct benefit of a 20% discount on all ConsensusDOCS products at www.ConsensusDOCS.org (Partner Code: CSI and Promotional Code: 100).

LIVING CITY DESIGN COMPETITION



WWW.ILBI.ORG/LIVINGCITY

VISUALIZING THE FUTURE OF CIVILIZATION

The International Living Building Institute invites the world's most talented and daring designers, planners, artists and animators to create a new global vision: a breathtaking, compelling model for the future of civilization. All entries must comply explicitly with all 20 Imperatives of the Living Building Challenge™ 2.0.

Prizes totaling over \$125,000 available along with extensive media coverage.

For details and full contest rules, go to: www.ilbi.org/livingcity.

COMPETITION PRESENTED BY:



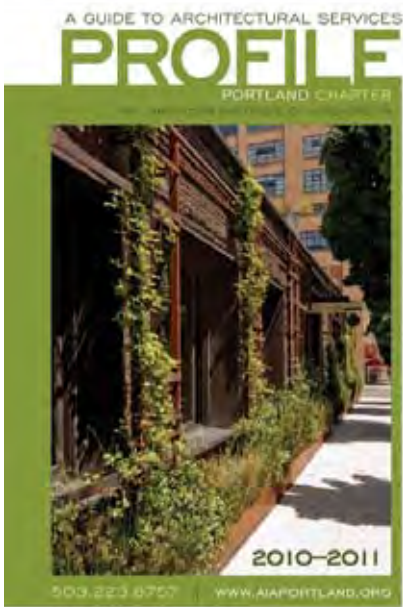
IN PARTNERSHIP WITH:



MEDIA PARTNER:



FROM PORTLAND AIA



Profile 2010-2011

is a directory of Portland AIA architects and firms that includes areas of expertise, examples of projects, awards, firmsizes, contacts, and statements as well as links to their respective websites. It will be available for purchase through the AIA Portland

office beginning in September.

You can pre-order your copy of Profile 2010-2011 today for \$35.00 by contacting AIA Portland at 503.223.8757 or swei@aiaportland.org.



Mark your Calendars for the Second Annual Portland Architecture + Design Festival this October

This month-long, city-wide celebration of our local built environment and design community will offer tours, film screenings, public exhibitions and more. AIA Portland and the Center for Architecture are partnering with many of Portland's finest arts and culture organizations to present a wide range of events for both architects and the public. Partner organizations include the Architecture Foundation of Oregon, International Interior Design Association, American Society of Landscape Architects, and Street of Eames, with more to follow soon.

Festival updates will be posted on our website at www.aiaportland.org, on our Facebook page, and through our component e-newsletter.

[Click here](#) to check out what events are going to go on!



AIA Portland
Friday Education Series

Hold the Date: Structure+Architecture Symposium Friday, October 1, 2010, 8:00 am - 5:00 pm 6 Learning Units

Please join AIA Portland for a ground-breaking symposium that aims to illuminate the importance of the collaboration between architect and structural engineer, and to examine technology that integrates architectural and structural design. It will investigate the idea of structure as a generative force in the design process and consider structural innovation through research and practice.

Register at www.aiaportland.org/fred/ now and take advantage of early bird pricing.

THE CONTACTS

Region Website
www.nwregioncsi.org

Portland Website
www.portlandcsi.org

Institute Website
www.csinet.org

Portland Officers & Directors

President

Kaye Kloster, CSI.....503.227.3424
Ford Graphics

President Elect

Fred Herbold, CSI,CCS.....503.297.1382
FJ Herbold Inc

Immediate Past President

Russ Pitkin, CSI,AIA.....503.445.7371
SERA Architects

Secretary

Amy Clements, CSI,CDT.....503.283.6712
Andersen Construction

Treasurer

Christine Irwin, CSI,CDT.....503.635.6227
Weller Associates, Inc.

Executive Director

Jane Ellsworth, CSI.....503.805.2500

Director, Professional (Term ends 6/2012)

Corey Morris, CSI.....503.224.4848
Clark/Kjos

Director, Professional (Term ends 6/2011)

Glen Miller, CSI.....503.636.7979
GA Miller Architecture

Director, Industry (Term ends 6/2011)

Bud Henson, CSI.....360.600.0804
Window Tech

Director, Industry (Term ends 6/2012)

Scott Martin, CSI, CDT.....503.701.4788
Tremco Inc., Vulkem Paraseal

Director, Professional (Term ends 6/2012)

Alexander Lungershausen, CSI, CDT,
LEED, AIA503.227.1254
Thomas Hacker Architects

Director, Industry (Term ends 6/2011)

Steven Gray, CSI,CDT.....503.227.2587

Committee Leaders

Awards

Christine Irwin, CSI,CDT.....503.635.6227

Certification

Michael Madias, CSI,CCS...503.224.6767

Continuing Education

Skip Brown, CSI,CCS,AIA....503.546.4526

Education

Steve Gray, CSI, CDT.....503.227.2587

Golf Tournament

Dena Cook, CSI,CDT.....503.224.3860

Industry Forum

Jody Moore, CSI,CDT.....360.574.3449

Library

Perky Kilbourn, PhD,CSI.....503.244.1778

Membership - Co-Chair

Lee Kilbourn, FCSI, CCS, FAIA..503.863.2440

Pat Murphy, CSI,CDT.....503.240.3955

Orientation

Jody Moore, CSI,CDT.....360.574.3449

Programs

Jordana Goff, CSI-I.....503.753.1266

Publicity & Editor

Fred Herbold, CSI,CCS.....503.297.1382

Publisher

Adrienne McNabb.....360.904.0184

Specifiers Share Group & Technical

Fred Herbold, CSI,CCS.....503.297.1382

Alexander Lungershausen...503.227.1254

Student Affairs

Rudy Barton.....503.725.3339

Webmaster

Corey Morris, CSI.....503.224.4848

Institute Director

2010 - 2011

Loren Berry, FCSI, CDT, AIA

Berry Architects PC

Phone: 541.485.3970

Email: lberry@berryarch.com

460 East 2nd Avenue

Eugene, OR 97401-2419

NW Region Committees

President

Cherie McNabb, CSI,CDT....360.281.1918

President Elect

Martin W. Powell, CSI, CCA...208.345.8872

Academic Programs

Gene Fosheim, CSI.....425.337.1317

Awards

Jeremy Jeffers, CSI,AIA....208.323.9520

Certification

Brian Keil, CSI,CCPR....425.427.1900 x104

Education

Perry D. White, CSI, CCPR.....253.273.6163

Electronic Communication

Corey Morris, CSI.....503.224.4848

Membership

Sheri Konowitz, CSI-I,CDT...541.687.0129

Technical

Clifford P. Marvin, CSI, CCS..907.274.7443

Planning

Nora Vivarelli, CSI.....206.409.3870

Publications

Christine Irwin, CSI,CDT.....503.635.6227

Secretary

Sheri Konowitz, CSI-I,CDT...541.687.0129

Treasurer

Perry D. White, CSI, CCPR.....253.273.6163

Northwest Region Chapter Meetings

Cook Inlet, Anchorage, AK (Third Tuesday)

Mark Hughes, CSI.....907.267.5163

Puget Sound, Seattle, WA (Second Thursday)

Andrew Estep, CSI.....206.382.3393

Mt. Rainier, Tacoma, WA (First Thursday)

Bob Kenworthy, FCSI, CCS.....253.931.4904

Dennis Kabba, CSI,CDT.....253.627.5599

Spokane, WA (Second Thursday)

Thomas Gerard, PE, CSI, LEED.509.328.2771

Portland, OR, (Second Tuesday)

Jane Ellsworth, CSI.....503.805.2500

Capital, Salem, OR (Third Thursday)

Chris Veit, CSI,CCS.....503.390.0291

Willamette Valley, Eugene, OR (Last Thursday)

Melanie Wittkop-Fort, CSI..541.485.0922

Idaho, Boise, ID (First Tuesday)

Karen Morris, CSI.....208.343.3620

Big Sky, MT (Last Tuesday)

Jan O'Brien, CSI.....406.245.6363



www.portlandcsi.org

CSI Portland Chapter

P.O. Box 2958

Vancouver, WA 98668

Phone: 503.805.2500

Fax: 503.214.8142

jane@portlandcsi.org



VOLUME 50
ISSUE # 02
OCT 2010

CSI Exclusive Tour - in conjunction with Portland AIA



Lincoln Hall *revealed!*

WEDNESDAY, October 13, 2010

New Day! New Date!

WHAT'S INSIDE:

President's Message

Portland CSI Goes Gold

What Do You Say

Perky's Notes

Board Meeting Notes

Membership

Chapter News

Events

Region Conference

News From the Institute

Contacts

Portland AIA

ASPE

Lights! Music! Action! Portland State University celebrated the grand reopening of historic **Lincoln Hall**.

The \$29-million renovation is the culmination of a long history for this well-known Portland structure on the **South Park Blocks**. Built in 1911, the Classic Revival style building served as Lincoln High School until 1954 when it became part of Portland State. In 1972, it became the PSU Performing Arts Center but declined into disrepair until it was condemned in the late 1990's.



Howard S. Wright and BOORA Architects with **JJ Henri** will be our hosts when we get an exclusive inside look and hear the story of how the team overcame extreme challenges and capitalized on unforeseen opportunities to take this condemned structure to **LEED Gold**.

The tour stops feature:

- Grand Lobby – restored to maintain its original character
- Historic Light Wells – reopened to bring daylight to the interior spaces
- Performance Hall – upgraded to ADA and the pit was lowered 4-feet!
- Recital Hall - refurbished with bamboo and custom acoustic panels
- New Foundation - poured with the stairwells hung in place
- Seismic Additions – engineered with very high quality concrete work



Join us **WEDNESDAY, October 13** and experience **Lincoln Hall *revealed!***

Tour Schedule

4:30 PM Registration in the Lobby

SW Broadway & Market Street-- Enter from the Park Blocks

4:45 PM: Introduction by our Hosts

Shotgun Start: 5:05 sharp

6:45 PM: Q & A with the Project Team in the Lobby

Tour: \$25.00

Invite a Guest! 2 for \$40.00

Limited to the first 100 Reserved Spots!

This program is Tour Only – No Dinner

RESERVE NOW! Click: www.portlandcsi.org

For more about this exciting project: <http://www.pdx.edu/insidepsu/feature-lincoln-hall>

For more about Portland Architecture and Design Festival go to www.aiaportland.org



1960 - 2010

PRESIDENT'S MESSAGE

By: Kaye Kloster, CSI

October 2010



Did you hear that? It was a huge sigh of relief from Jody Moore, Fred Larson, Ellen Onstad, Christyn Halliday, Chris Irwin and Lee and Perky Kilbourn. The Portland Chapter CSI planning committee put together a wonderful 50th celebration on Tuesday, September 14th. Over 100 attendees, many were returning past presidents, thoroughly enjoyed the memorabilia, reminiscing, visiting with old friends and celebrating the achievements of our CSI Chapter. So many elements were involved in the planning and execution of the celebration. For those of you who did not attend, I'll list just some of the highlights:

- Past President's reception prior to the main event – thanks to John Lape for the idea!
- Memorabilia from our 50 year history on display tables with a timeline for each decade – thanks to Ellen Onstad, Christyn Halliday and Lee and Perky Kilbourn for selecting the items!
- Chet Orloff was our emcee and entertained and educated us about Portland's architectural history intertwined with each past president sharing their memories of their CSI experience – thanks to Fred Larson for coordinating with Chet!
- The "Daily Journal of Commerce" for creating the special supplement that commemorates our 50th anniversary. It was included with the September 14th DJC paper – thanks to Cris Schultz and Stephanie Basalyga at the DJC!
- The corsages and boutonnieres for the past presidents and committee members – thanks to Chris Irwin!
- The videographer and audio/visual screens, monitors and music – thanks to Jane Ellsworth!
- The overall event vision and countless details, coordination and script writing – enormous thanks to Jody Moore!

CSI will be mailing the DJC special supplement to all CSI members in the next couple weeks. I know many of you will enjoy the contributions by former colleagues and CSI members.

I confessed to all of you in my last letter that I was anticipating the event with great trepidation. I began the evening totally humbled by so many individuals that I have met and admired. After listening to the returning past presidents I realized that they, too, were nervous about leading the Chapter. They had faced challenges that without a supporting board and membership could not have been achieved. My nerves are quieted and determination bolstered because I also have the support to move ahead into our next 50 years. What stories will we tell at the next anniversary? I can't wait to find out!

A handwritten signature in black ink that reads "Kaye".

PORTLAND CSI GOES GOLD



Portland CSI

Gold Gala

An Evening
to Remember



Red rose boutonnières identified our hosts when the CSI Portland Board of Directors and **President, Kaye Kloster** welcomed more than a hundred colleagues to celebrate the chapter's 50th anniversary on September 14. The **Gold Gala** was an elegant evening, a reunion of cherished friends and a lot of fun.

White roses adorned the lapels of our Guests of Honor: Past Presidents of the Portland Chapter. There have been a total of 36 Presidents, and of these 25 are still living; their names and the dates they served follow this article. We were honored by the presence of 22 of the living Past Presidents, some of whom met each other here for the first time.

The Governor ballroom was decked in gold and black, two screens in the front of the room flashed images of chapter history and the music swung us into a journey through 50 years. Around the room, five decades of CSI Portland memories were displayed with Timelines of world and CSI milestones. Photo boards with collages of conferences, Products Fairs and Chapter events brought back memories of fellowship and collaboration. It was amazing to recall — or not — who all those people were and what we were doing then.

CSI Institute Treasurer, **Bob Simmons, FCSI,** brought greetings and an Institute award for our anniversary and **Scott Finlinson, CSI,** Seattle Chapter President, presented Portland with a special honor. We later learned that the Seattle Chapter was instrumental in starting Portland CSI, and Seattle members traveled here for many meetings to help grow our fledgling chapter. **Bob Kenworthy, FCSI,** Chair of the Institute Jury of Fellows, was among the many guests who traveled to join our celebration.

Chet Orloff distinguished our event with his presentation of iconic Portland images and stories about the events and important decisions in Portland's growth over the last 50 years. A practitioner of history, an author, a professor of Urban Studies and an excellent speaker, Mr. Orloff put our chapter's evolution in perspective with his observations about the important roles CSI and our industry have played in creating the place where we live.

Each decade was represented by several Presidents and starting with **Dick Ehmann —1962 to 1964—** every one shared memories about the time when he or she presided over the chapter: a favorite event, an accomplishment, a special mentor, a learning lesson. Funny, sweet, insightful and heartfelt, all the Presidents' stories told how CSI has enriched and benefitted their professional and personal lives.

Chet brought us all to our feet to Toast the Chapter's 50-year history with a call on us all to understand the vibrant activity and challenges of our past in order to take our chapter into the future.

Kaye Kloster closed the evening with reflections on the rich experience of being with so many of the leaders on whose shoulders she is standing as the new President. She made it clear that she will be looking to each of us to take advantage of the opportunities in the Portland Chapter, and that our greatest benefits will be the personal relationships we form and the successes that we build together.

Here is to the Next 50 Years: CHEERS!



PORTLAND CSI GOES GOLD



Margie Largent, President 1976-1977 and 1985-1986, and Betty Sherman, President 1984-1985



CSI Portland Chapter Past Presidents 1960 to 2010



original chapter logo

2008-2010	Russ Pitkin	1982-1983	Don Eggleston
2006-2008	Doug Allen	1981-1982	Les Seeley
2005-2006	Dennet Latham	1980-1981	Ivan McCormick
2003-2005	Cherie McNabb	1979-1980	Rod Moorman
2001-2003	James B Wilson	1978-1979	Bob Klas
2000-2001	Jody Moore	1977-1978	Larry Arnold
1999-2000	Igo Jurgens	1976-1977	Margie Largent
1997-1999	Richard Heiserman, FCSI	1974-1976	Kenneth Searl, FCSI
1995-1997	Dale Kuykendall	1973-1974	Verne Brice
1993-1995	John Lape, FCSI	1972-1973	J. Min Luey
1991-1993	Jim Hirte	1970-1972	John C. Crook
1990-1991	Dennis Obert	1968-1970	Lee F. Kilbourn, FCSI
1989-1990	Tom Shea	1966-1968	Kenneth F. Walter
1988-1989	Inge Annelise Carstanjen	1965-1966	J. Keith West
1987-1988	Curt Finch	1964-1965	Vincent C. Fletcher
1986-1987	Dennet Latham	1962-1964	Richard C. Ehmann, FCSI
1985-1986	Margie Largent	1961-1962	Stuart B. Mockford
1984-1985	Betty Sherman	1959-1961	Ralph F. Appleman
1983-1984	Dick Gira		<i>Deceased</i>

Timelines that started with the Chapter's founding in 1959 and ended with 2010 displayed both world and CSI milestones.

Ellen Onstad, McGraw Hill Dodge, and Christyn Halliday, Hoffman, constructed the timelines with assistance from the excellent memories of Perky and Lee Kilbourn. Together they all put together a most impressive nine tables with 5 decades of Portland CSI memorabilia.

High Performance Lightweight Exterior Wall Systems



This article is a brief discussion of recent approaches to exterior wall design. They incorporate cold formed metal framing (CFM) and continuous rigid foam thermal insulation (CI). The insulation is located outboard so there is an open cavity free for mechanical and electrical systems.

The first and principle system in this discussion was presented to the Specifiers' Share Group in July by Walt Suman, CSI, CDT. Walt represents TekTerio Systems which includes Dow Chemical's Thermax™ Wall System. You may be familiar with Dow's extruded styrene foam product brand Styrofoam™. Thermax™ is Dow's brand name for reinforced and faced polyisocyanurate foam insulation board.

The wall system that Walt presented addresses three performance concerns: continuous thermal insulation, air barrier and water intrusion, and code compliance.

Unique features of this system include: consistent thermal performance, dual air barrier, and no exterior sheathing.

Construction – After the CFM framing which has been engineered and designed, is installed, the iso-board insulation is fastened directly to CFM. The CFM framing may be either platform framing or curtainwall framing. Through-wall flashing is already installed at the base and relieving angles. Insulation board joints and penetrations are covered with butyl tape. Spray foam is applied to the interior side of the board insulation and CFM and penetrating fasteners.

The assembly has been tested approved for multi-story construction under NFPA 285 for many common non-combustible exterior finishes. This particular iso-board has 30 percent better thermal performance than the manufacturer's XPS board and almost 70 percent better than low density EPS.

Recommendations – Make sure your flashing at the base and relieving angles or ledgers goes back to the CFM framing and is lapped by the spray foam. Flashing at lintels should lap onto the face of the iso-board. Base or sill tracks should be underlain with a foam gasket. Head tracks should be firestopped, and curtain walls need to be firestopped at each floor. Make sure that masonry anchors and fasteners for exterior finishes are designed for the offset presented by the iso-board insulation. A thermal barrier like half-inch gypsum board is a minimum requirement on the interior side (interior finish).

Specifications: Include this statement: "The wall assembly shall be tested in accordance with and comply with the acceptance criteria of NFPA 285, except one-story buildings shall comply with IBC Section 2603.1.4." For the iso-board insulation require that the core foam have a thermal resistance of 6.5 BTU per sq. ft. per hour per degree °F in accordance with ASTM C518.

Another system which can be researched at www.accbt.com is a composite CFM and EPS panel that is shipped ready for swift installation and provides rapid building closure. This system also has the advantage of an open interior stud cavity. However, because the CFM members penetrate the EPS, it is not strictly continuous insulation (but nearly so – they show a loss of about 12 percent of the continuous thermal resistance value). Also, the air/moisture barrier must be specified and installed as a separate system.

Both of these wall systems are examples that merit serious consideration, especially for commercial construction where the building life expectancy may be relatively short; so that material consumption and reuse should be uppermost. This type of wall system is indicative of the desire for high performance, low cost, efficient construction and rapid closure. Sound familiar? Please check them out.

By Fred Herbold, CSI CCS, editor

PERKY'S NOTES

By: Perky Kilbourn, CSI



With college majors in the Science and Mathematics Departments, I took lots of classes in the “hard sciences” (inorganic, organic and biological chemistry, physics and numerical calculus) but only one “Soft Science Class” (Sociology). Now that I am “retired” it is time to find out what other students were studying.

Note #1 – a few comments about the book “How Pleasure Works” by Paul Bloom.

Paul Bloom is a professor of psychology at Yale University. In the preface of his book he introduced the concept that he is presenting two different ideas

First - everyday pleasure is deep and transcendent.

Second - everyday pleasure reflects our evolved human nature.

The words “transcendent” and “evolved” are used in these ideas. I know scientific definitions for these words but I don't think my definitions will work for psychology. This means I have to continue reading the book to figure out what he is talking about. For example I need to find definitions of “transcendent” and “evolved.” After reading more I realize the point seems to be that the pleasure we get from all sorts of everyday objects is related to our beliefs about their histories. For example the CSI pin is an everyday object for some of us and many people related their pleasant histories of CSI at the anniversary party. By the way, I thought the 50th Anniversary Gala Celebration was a great success.

Note #2 - The final paragraph of my notes for September, 2010 discussed two books on the wealth of nations. I have continued to read books on the wealth of nations. The most recent one is “Adam's Fallacy” by Duncan K. Foley. This book tends to question some of Adam Smith's thoughts. Before reading too many pages of this book, I realized this book had been written before, what I'd like to call, “The Wall Street Episode.” I remember that in 2006, when I was listening to some economist on the radio, this economist said that the banks were over extended. My thought at the time was that the economist must be mistaken. Unfortunately, the economist was correct and the “Wall Street Episode” occurred. My definition for “episode” is a “short section of a long radio or television program which continues for several weeks.” My fear or concern is that there will be more “Wall Street Episodes.” We may not have heard the last from Wall Street.

Note #3 - Words are sometimes “fun” and bring back memories that are pleasant. “Episode” is one of those words. When I was growing up we listened to the radio. There were programs for children which were heard every afternoon after school. Once the programs were finished you would go outside to play unless it was raining. With rain, you would stay with the radio until a parent said it was time to set the table for dinner.

* Yes, everyone sat down at the table for dinner. *

It may be selective memory loss but I don't remember having any home work to do. It seems to me I may have done what was required between classes or at noon.

The only thing, which I can remember (or chose not to forget), are lists of “spelling words.” There was a period of time when you learned to spell by memorizing how the words “looked” rather than by the “sounds” of the various letters. I believe that learning to spell by the “sounds” of the various letters is termed “phonics.” I learned about “phonics” while listening and sometimes watching “Sesame Street” with my daughters. When I started using phonics, spelling started to “make sense” though not as much as science or math.

Notes #4 - The July 2010 issue of CRN had an article entitled “2010 Women of the Channel” by Jennifer D. Bosavage. Her article included responses to the question:

How can I better balance my work life with my personal time?

Some suggestions were

First, Create a comfortable culture.

Second, Be flexible.

Third, Offer day care.

Fourth, “Build a task force to look at potential sources of conflict.” This is set off in quotes because it was a new “category” for me and I liked the sounds of it. Apparently where it was first used it did work.

Fifth, Include nontraditional families in family care policy.

Sixth, Foster a Women's Alliance.

Seventh, Identify and sponsor bright stars.

Note #5 - Stephen N. Bauer, M.D., the president of the College of American Pathologists (CAP – please see note #6) had a closing sentence in his column which sounded to me like it could work for other professions.

“Every pathologist who seeks to participate more fully and directly as a member of the medical team has an ownership stake in our collective transformation. Those who choose to step up will be those who stand out.”

Note #6 - In the August 2010 issue was another good column in CAP (see Note #5 for meaning of CAP). This was entitled “Good conversations lead to good jobs” by Dale Dauten. The method seems to be:

First, figure out for whom you would like to work.

Second, figure out how to meet members of the firm in a professional setting.

Third, figure out how to persuade members of the firm that what you can do for them is unique.

Note #7 - Are there conflicts between Scientists and Engineers? What about Architects and Engineers? H. Steven Wiley is the lead Biologist for the Environmental Molecular Sciences Laboratory at Pacific Northwest National Laboratory. He wrote a column titled: “Scientists vs. Engineers.” There seems to always be tension between those who want to generate basic knowledge and those who want to apply this knowledge. “Knowledge” is an interesting word and could be changed to “computers” or “building technologies.”

Note #8 - It has been a while since I have seen a DVD or movie but I saw one recently that I would like to recommend. I thought it was very good. See “Extraordinary Measures” with Brendan Fraser, Harrison Ford and Keri Russell. It contained great pictures of Oregon Health & Science University.

MEMBERSHIP

Renewing Members

July 2010

- Reshma Basu, CSI-I; member since 2009
- Mark E. Booth, CSI, CDT; Zimmer Gunsul Frasca Architects, LLP; member since 1991
- Bruce C. Brown, CSI, AIA; GBD Architects, Inc.; member since 1990
- Art DeRosia, CSI, AIA; PacTrust; member since 2006
- Kelly J. Edwards, CSI, AIA; Scott-Edwards Architecture, LLP; member since 2009
- Donald D. Eggleston, CSI; SERA Architects, P.C.; member since 1970
- Bud Henson, CSI; Window Tech Inc.; member since 1997
- Jim M. Hutchin, CSI; Bridgetown Sales, LLC; member since 2009
- Kaye Kloster, CSI; Ford Graphics; member since 1998
- Marc A. Labadie, CSI; TVA Architects, Inc.; member since 1994
- Mark LaFarge, CSI; Streimer Sheet Metal Works, Inc.; member since 1995
- Richard McBride, CSI; McBride Architects, P.C.; member since 1996
- Raoul Meekcoms, CSI; R&S Roofing and Specialty Sales; member since 1982
- Bruce W. Mitchell, CSI, CDT; Carboline; member since 1995
- Corey L. Morris, CSI, CDT; Clark/Kjos Architects; member since 1998
- Solvei Neiger, CSI; Zimmer Gunsul Frasca Architects, LLP; member since 1995
- William H. Sandahl, CSI; Kingspan Insulated Panels; member since 1995
- Stan Vande Bergh, CSI; Portland Bureau of Water Works; member since 1993
- James B. Wilson, CSI, CCS; SRG Partnership, P.C.; member since 1989

About The Predicator

The next few issues will celebrate our Chapter's 50th Anniversary.

This issue begins our efforts to shorten and professionalize The Predicator.



Please try our graphic "links" to Board Meeting Minutes and Contacts.

If you'd like to help, contact me. Click on the guy with the pen.

Fred Herbold, editor

CHAPTER NEWS

Tee Off with the Golf Tournament Committee



After 13 Tournaments, Erica Bitterman-Ryon is stepping off the tee and will no longer drive our annual Golf Tournament. We extend many thanks to Erica for her excellent work putting together all those successful and fun events.

Are you an avid golfer? Do you love the links? We need a new committee chair and members.

Call Jane 503-805-2500 or email jane@portlandcsi.org. Chapter President Kaye Kloster will host this year's first Golf Tournament Committee meeting.

BOARD MEETING MINUTES

PORTLAND CHAPTER – MINUTES OF BOARD MEETING – AUGUST 2010



Read about the procedures and the decisions of your Chapter Board of Directors.

Click on the "Rose" or go here

<http://www.portlandcsi.org/documents/CSI-BoardMeetingAugust2010.pdf>

CHAPTER EVENTS

Oct. 11 **Membership Committee Meeting**
11:45 am at Macadam's
5833 SW Macadam

Oct. 13 **Chapter Meeting, Tour at PSU's Newly Renovated Lincoln Hall**
4:30 Lincoln Hall
SW Broadway & Market Street

Oct. 26 **Program Committee Meeting**
11:30 am at PECL
1400 SW 5th Avenue

Nov. 9 **Chapter Meeting, Urban Sustainability: EcoDistricts & Mainstreets**
5:30 pm at the Governor Hotel
614 SW 11th Avenue

Dec. 14 **Chapter Meeting**
11:30 am **LUNCHTIME** at the Governor Hotel
614 SW 11th Avenue

Jan. 11 **Chapter Meeting, Economic Forecast**
5:30 pm at the Governor Hotel
614 SW 11th Avenue



NORTHWEST REGION CONFERENCE

This year the CSI Northwest Region Conference hosted by the Idaho and Big Sky (Montana) CSI Chapters, was held in West Yellowstone, Montana. The education sessions began Thursday morning with leadership training by Mark Levin, CAE, CSP, titled “Getting Back to Nature: Leadership by Fire (and Earth and Wind)”. Mark’s style is not to just stand in the front of the room and lecture so the attendees came together to brainstorm ideas of who we admired as leaders and why. This set the tone, building on a theme, as we learned how to delegate, mentor and lead.

After lunch on Thursday I ventured off with some of the other vendors to see the Grizzly and Wolf Discovery Center in West Yellowstone. In addition to informative displays on bears, talks by rangers the Center has on display wolves and bears in habitats much like the wild. Aside from allowing visitors to see grizzly bears up close, the GWDC also tests bear-resistant containers for the US Forest Service. They were given permission by the US Fish & Wildlife Service to save grizzly bears from the lower 48.



Friday morning I had the privilege of representing the Portland Chapter at the Coordinating Council meeting. The Region Leadership would like the Chapter to establish goals of what we, as members, would like to see happen within our chapter and come up with a way that our Region Leadership can help us realize those goals. Since the recent Governance changes, the Region is reinventing themselves and looks to work directly with the chapters to make them stronger and in turn make our Region stronger.

Orville Daniels spoke during the later morning session about the “Canyon Creek Fire, Montana in 1988”. Talk about a leader... In 1988 he made the decision to allow a prescribed lightning started fire to burn. The fire burned for over a month without incident and then environmental factors combined to cause the fire to grow into one of the worst fires in Montana history. Twenty years later the decision still haunts him, even knowing that he made the best decision possible based on the data available. The Yellowstone fires of the same year were covered by Robert Barbee in “Appropriate Management Response: 1988 Yellowstone Fire & Beyond.” Amazingly the land has recovered and the Park looks as beautiful today as they did prior to the fires.

The true beauty of the town of West Yellowstone is that it is the western gateway to Yellowstone National Park. On Saturday many of the conference attendees took a bus tour of Yellowstone Park. I decided to visit Old Faithful on my own and spent some time driving through the park. The wildlife is amazing! I saw a wolf scouting through a field, elk, and two herds of Bison. I spent sometime up close and personal time with the bison as they were crossing the road in front of my vehicle. Erring on the side of caution, I decided not to honk to try to hasten them along and spent the time enjoying the view.

~ Chris Irwin, CSI, CDT

NEWS FROM THE INSTITUTE



Focusing on “The Main Thing”

By Dennis J. Hall, FCSI, CCS, CCCA, FCSI

CSI President’s Message: [\[Click on the Shield\]](#)

New UniFormat Released!

Price: CSI Member: \$91 and Non-Member \$114

[Get it in the CSI Store!](#)

CSI and CSC Update OmniClass™ Tables

Updates to several tables in the organizations’ construction classification system, [OmniClass™](#)

Educational Opportunities from CSI Weekly:

USGBC Education Provider Workshop: Incorporating LEED into Project Specifications November 19, 1 - 5:30pm

This course provides attendees with an understanding of the importance of specifications in documenting LEED requirements following CSI’s recommended practices and formats. The course also explains the need for an integrated team approach to achieve LEED/sustainable goals on a project and the critical function of the specifier on that team. Attendees will learn how to find, evaluate and specify appropriate green products, materials, systems and construction procedures and, lastly, how to implement these specified techniques during the construction phase. All approved courses offered by USGBC Education Providers are approved for credit toward LEED Professional Credential Maintenance. [Learn more, or register now](#)

CSI Forum: (Specifications Discussion)

Precedence/Conflicts Between Drawings and Specifications

“Be very careful, you may perhaps be including a requirement in conflict with the general conditions. The AIA A201 general conditions specifically states that the drawings and specifications are complimentary with no precedence of one over the other - no hierarchy of documents.” [Read this forum.](#)

More from CSI Weekly:

Hot Jobs

CSI’s [Career Center](#) posts new openings in the construction industry every week! This week’s hot jobs include [Specification Writer](#) (St. Louis, MO); [Energy and Sustainability Manager](#) (Cambridge, MA); [Project Manager, Construction](#) (Chicago, IL); [Building Inspector](#) (Pearland, TX). Visit the [Career Center](#) to learn more about these jobs.

CSI Support of ConsensusDOCS Benefits Members

In July 2010, CSI and four leading construction industry associations signed onto the ConsensusDOCS effort, joining 24 other construction industry organizations. CSI members receive a direct benefit of a 20% discount on all ConsensusDOCS products at www.ConsensusDOCS.org (Partner Code: CSI and Promotional Code: 100).

CSI CONTACTS



PORTLAND CHAPTER CONTACTS / LEADERS
Click for a list of Officers, Directors and Chairs



NW REGION CONTACTS / LEADERS
Click for a list of Officers and Chairs



INSTITUTE CONTACTS / LEADERS
Click for a list of Officers, Directors and Chairs

Northwest Region Chapter Meetings

Cook Inlet, Anchorage, AK (Third Tuesday)	MarkHughes,CSI.....907.267.5163
Puget Sound, Seattle, WA (Second Thursday)	Andrew Estep, CSI.....206.382.3393
Mt.Rainier, Tacoma, WA (First Thursday)	Bob Kenworthy, FCSI, CCS.....253.931.4904
	Dennis Kabba, CSI, CDT.....253.627.5599
Spokane, WA (Second Thursday)	Thomas Gerard, PE, CSI, LEED.....509.328.2771
Portland, OR (Second Tuesday)	Jane Ellsworth, CSI.....503.805.2500
Capital, Salem, OR (Third Thursday)	Chris Veit, CSI, CCS.....503.390.0291
Willamette Valley, Eugene, OR (Last Thursday)	Melanie Wittkop-Fort, CSI.....541.485.0922
Idaho, Boise, ID (First Tuesday)	Karen Morris, CSI.....208.343.3620
Big Sky, MT (Last Tuesday)	Jan O'Brien, CSI.....406.245.6363

PORTLAND AIA



2nd Annual Portland Architecture + Design Festival in October

This month-long, city-wide celebration of our local built environment and design community will offer tours, film screenings, public exhibitions and more. Festival events and updates are posted at www.aiaportland.org



AIA Portland
Friday Education Series

Professional Development and other Educational Programs by Portland Chapter AIA

Go to www.aiaportland.org/fred/ for offerings and registration.

AMERICAN SOCIETY OF PROFESSIONAL ESTIMATORS PORTLAND CHAPTER 54



Next Meeting:
Tuesday, October 19
Pre-bid Strategies

PORTLAND CHAPTER CONSTRUCTION SPECIFICATIONS INSTITUTE

AUGUST MEETING NOTES

August 2, 2010

CALL TO ORDER: The meeting was called to order at 12:03 by President Kaye Kloster at Ford Graphics Conference Room. A quorum was present.

PRESENT: Fred Herbold, Glen Miller, Corey Morris, Jane Ellsworth, Steve Gray, Amy Clements, Kaye Kloster, Chris Irwin, Bud Henson, Alexander Lungershausen

ABSENT: Russ Pitkin, Scott Martin

GUESTS: Jody Moore, Fred Larson

AGENDA: A motion was made and passed to accept the consent agenda.

Treasurer's Report: Chris handed out an updated budget. The Golf Tournament was discussed.

Committee Reports

Awards – Nothing to report at this time.

Nomination Committee – Completed task for the year.

Emerging Professionals – Nothing to report at this time.

Programs – Nothing to report at this time.

Education – Steve is in contact with Jody of the Energy Trust for a possible education seminar.

Industry Forum – Kaye had requested that the board come up with a list of keynote speakers. The board members gave their ideas to Jody Moore. Kaye gave a list of 50 architects from a Vanity Fair article.

50th Anniversary – Jody Moore and Fred Larson came to discuss the event. The invitations have gone out to the past presidents to attend. Jody handed out a timeline that the committee is working from. We have Chet Orloff as our MC. As we go through the different era's Chet will tell what happened in that era in Portland. The chapter is doing a 50/50 fundraiser asking companies to donate \$50 to help cover the cost of the evening. Kaye asks that all the board members try and attend.

Strategic Partners – Nothing to report at this time.

Website – Nothing to report at this time.

Certification – Nothing to report at this time.

The Predicator – Should have August issue draft out today, to be published this week. Jody to put something together for Gala and Kaye to get her letter to Adrienne. Jane has an article from a vendor to give to Fred. Fred is working on several changes for the newsletter one being links to the different articles and do away with the paper looking newsletter. He is also working on redoing the graphics and look of the newsletter.

NEW BUSINESS

Discussed a list of members whose memberships are about to expire. Those that know or recognize a name are encouraged to contact them.

OLD BUSINESS

NW Region Conference – It was decided that Kaye, Fred, Amy and Chris will attend.

ACTION ITEMS

- Kaye to call Karla to find out about strategic partners.
- Jane needs to schedule signing session at the bank with Kaye and Chris.
- Russ to contact Institute about a 600-800 word article for the 50th Anniversary DJC handout.
- Committees need to send monthly update to Jane, one week prior to board meeting, for distribution to the board.

Next meeting will be on Tuesday, September 7th, starting at noon, at Ford Graphics.

Adjourned at 1:12 pm

Respectfully Submitted,
Amy Clements, Secretary



PORTLAND CHAPTER CSI MONTHLY NEWSLETTER

THE PREDICATOR

Knowledge for Creating and Sustaining the Built Environment

November 2010

Volume 50 Number 03

In This Issue

- [President's Message](#)
- [Portland Goes Gold](#)
- [Tour of PSU Lincoln Hall](#)
- [Membership](#)
- [Certification & Education](#)
- [Technical](#)
- [Perky's Notes](#)
- [Calendar, Minutes, Editorials](#)
- [Institute & Region News](#)
- [Allied Organizations' Events](#)

Dear Jane,

You have just received the first electronic edition of *The Predicator*. You are probably familiar with e-newsletters, but if not, here are some features of this issue that you can use to navigate.

- Left-click with your mouse on the titles to the left under "In This Issue" and you'll be taken to that article. Look for "Back to Top" at the bottom of several articles, click on it, and you'll come back here.
 - Most bold-color text, icons and small graphics are active links that will take you to related web-sites or articles in this newsletter.
- I hope you enjoy the experience. Let me know what you think.

Fred Herbold, editor

[Email the Editor](#)

[November Chapter Meeting](#)

NEW CONSTRUCTION PROJECTS BEING CREATED BY URBAN PLANNING

Tuesday, November 9, 2010



Three local cities are making plans for growth. Designers and Constructors will be converting their Urban Plans into Reality for decades to come.

These Leaders of Urban Planning will discuss the



We are the

Portland Oregon Chapter of the
Construction Specifications Institute
P.O. Box 2958
Vancouver WA 98668
503-805-2500

Email Portland Chapter



Projects being created in their communities and how their Plans open the door for Development.

The Panel Moderator:

Gerald Baugh, Portland Development Commission,
Urban Development Business & Industry Manager

The Panel Members:

Chet Orloff, Chairman, Portland Central City Plan
Laura Kelly, Project Manager, City of Beaverton Civic Plan
Alisa Pyszka, Director, VancouverDevelopment

Join us for this engaging panel discussion:

Challenges of turning Urban Planning into Reality
Successful Strategies that create Big Opportunities
Does the Construction Industry support or undermine urban planning?
Current Design and Construction projects that resulted from urban
planning
Current planning that will be future construction projects

RESERVE NOW!

Governor Hotel, Princeton Ballroom

5:30 Network with your Colleagues

6:30 Dinner by Jake's

\$40 -- reserved

Invite your favorite clients! Table of 8 only **\$280**

\$50 at the door

[Click Here to Register](#)

Dear Jane,

We have a problem today (10-27-10) getting access to the Chapter web-site. The price for a Table of 8 really is \$280. If you do register for a table before we can correct the price on the web-site, we will credit you back the over charge. Sorry for the inconvenience. Even machines are not perfect!

Sincerely, Fred and Corey

President's Message



Kaye Kloster, CSI

At the October CSI Board meeting we discussed the 2011 CSI Industry Forum. This is our Chapter's biggest fund raiser and to me, one of the events that truly distinguishes our organization from other design and construction **professional** organizations. One of the tasks that take a lot of concentrated effort is to select and secure the keynote speaker. I am working with **Alexander Lungershausen, THA Architecture, Inc.** and **Corey Morris, Clark/Kjos Architects** to find speakers that will appeal to a wide range of our members and beyond. I attended the presentation several years ago by Antoine Predock. It was an incredible, creative presentation I will never forget. Predock was engaging and eccentric but believable. This is the caliber of speaker we are looking for now. I also want the CSI board to assist the Industry Forum by soliciting and securing keynote speakers well into the future. John Lape, former Portland CSI president, spent three years securing Antoine Predock. This is not small task. If you have seen or would like to bring an inspiring architect to Portland, please send Alexander, Corey or me an email.

Speaking of Inspiration, CSI has some great opportunities that expand your network of contacts, your mind and your spirit. I am often exhausted by the end of the week from managing the three locations of Ford Graphics and keeping the staff we have engaged in performing their jobs and finding "silver linings" in the current economic climate. One of the best methods for me to energize is to attend a professional meeting, listen to a speaker and meet someone new. It gets me out of my routine and exposes me to a different perspective. While away from the office and the paperwork on my desk I can think beyond the tasks on my "to do" list.

CSI's monthly meetings provide such opportunities to break up the usual routine. On Tuesday, November 9, our program committee has put together a panel discussing "Economic Opportunities created by Urban Planning" The meeting will be held at the Governor Hotel Princeton Ballroom beginning at 5:30.

The panelists include: Laura Kelly, City of Beaverton's Civic Plan, Chet Orloff, Center City Plan and a representative from the City of Vancouver. The discussion will be moderated by Gerald Baugh, Portland Development Commission. Chet Orloff was the emcee at our 50th anniversary celebration in September. Gerald Baugh's name should be familiar to many of our members. He formerly worked for the City of Vancouver and spoke to the attendees after the tour of the VancouverConferenceCenter and Hilton Hotel.

I also want to encourage you to read "Perky's Notes" in this and every issue of *The Predicator*. **Perky Kilbourn** injects our Chapter's newsletter with new facts and ideas every month. I feel refreshed with a new sense of the world after reading her column. It wouldn't hurt any of us to get out of our comfort zone and take in something new and different!

Have a great month! I hope to see you at the November meeting. Don't forget the December lunch meeting will be on Tuesday, December 14th 11:30 - 1:00.

[Back to Top](#)

Portland Chapter Goes Gold

Celebration of 50 Years: Look for the Timelines, Photographs and Remembrances by past presidents on our website in the near future. It takes some effort to load it all. Your patience is appreciated.



Here is an example, past president Dale Kuykendall's, CSI, CDT address:

Greetings Fellow Past Presidents and Others,

While my active involvement in CSI has diminished, my memories and the professional enhancement gained have stayed with me.

With the support of my employer, I joined the Chapter shortly after college, and was still quite young when asked to join the Board, and eventually to become President for a 2 year term. I believe my claim to fame may have been to be the youngest President of the Chapter, but perhaps the historians can sort that out!

Anyone remember the Contractor's Share Group? I had the pleasure of launching that committee, and still have lasting friendships with the original members. A key mission was to spread the word about contractor issues that can be mitigated by design professionals. At least once, through "dramatic" performances, we shared the mind-boggling challenges of a bid day.

Certainly, my involvement in Chapter leadership stretched me way out of my comfort zone. Although basically an introvert, I had to lead meetings and speak in front of large groups of people. I credit this experience with helping me be successful in project interview situations for my company. A direct payoff if I ever saw one.

Those who were on the Board during my term may recall (fondly or otherwise) that I liked to run meetings in an expeditious fashion. We didn't run overtime, and there wasn't a whole lot of chit-chat. Personally, I like this approach, and it has served me well in my career as a Project Manager.

Probably my fondest memories of CSI came from the wide variety of travel opportunities that were supported by my employers. These included Alaska (twice), Denver, Minneapolis, Orlando and Victoria, just to name a few. There was always great content and great fellowship on these trips.

Portland Chapter CSI, thank you for the memories and growth opportunities, and congratulations on the 50th!

Dale Kuykendall, CSI, CDT

Portland Chapter 50/50 Program

We invite you to help us celebrate the Portland Chapter CSI anniversary. We have spent the past 50 years leading the industry in "Creating and Sustaining the Built Environment." The Chapter couldn't have reached this milestone without you - our members and your employers.

To celebrate the achievement of reaching our 50th anniversary, The Portland Chapter is asking for you to go 50/50 with us - \$50 for 50 years.

Just a \$50 contribution from each of our members will allow the Chapter to continue to make important contributions to the construction community. The Portland Chapter CSI provides:

- Education to enhance career development
- Networking at monthly meetings to build team partners
- Mentoring and Professional Share Groups
- Leadership training opportunities on the Local, Region and National level.
- Scholarships to students on a career path in the construction industry,
- Certification credentials and Continuing Education Credits
- Emerging Young Professionals Group to develop the next generation

Your \$50 contribution to the Chapter will allow us to fund these programs and continue growing as a Chapter.

Your 50/50 Sponsorship of the Portland Chapter will be acknowledged on the Chapter website.

Please take a moment now to make your \$50 contribution- select one of 3 ways:

- [Click Here](#): to pay by credit card
- Call Jane Ellsworth at 503-805-2500 or Fax: 503-214-8142
- Mail your check to Portland Chapter CSI, PO Box 2958, Vancouver, WA 98668

Thank you for your continued support of Portland Chapter CSI
Christine Irwine, CSI, CDT



Click it for 50/50
Program

[Back to Top](#)

October Tour of PSU's Lincoln Hall

Review & photos by Natalie Cannon.

Portland Chapter's October Program - Building Tour of PSU's Lincoln Hall

Lincoln Hall, a building condemned in the 1990s, has been revitalized by Portland State University (PSU) and now far outshines its previous life as a deteriorating performing arts center. The Portland CSI chapter seized the chance to take a peak at this amazing facility that's aiming for LEED Platinum certification and hosted a building tour of Lincoln Hall on October 13th, 2010.

The tour drew about 40 professionals across many fields of practice; among them were architects, engineers, general contractors, and manufacturers' reps. The



gleaming silver capitals of the large columns caught the attendees' eyes as they entered the building through the main lobby. To start off the tour, Mike Tingley, of BOORA Architects and Ron Blaj, of JJ Henri representing PSU provided an introduction to the history of Lincoln Hall, which was the original Lincoln High School and later transitioned to the Performing Arts Center for PSU, continuing to serve in that capacity to date.

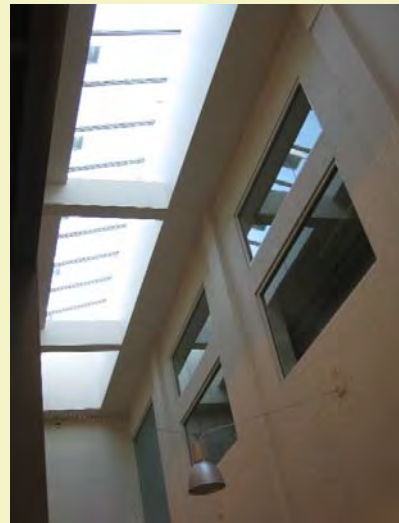


Lobby details

The biggest challenges mentioned in the restoration of Lincoln Hall were the necessary extensive seismic upgrades and changes to the electrical and mechanical systems. Throughout construction, which was overseen by Howard S Wright as the General Contractors, these challenges were amplified by the uncertainty that came with the unfolding of a building with such history and complexities. New discoveries constantly arose during the renovation process, which complicated the process - but also provided some benefits.

Highlights of the tour included the expansive interior light wells described by Mike Kolander of BOORA that were created during the renovation. Previously courtyard space, the

skylights and the entire space of the light wells now provide significant daylight to the interior of the building. Before the skylights were installed, seismic braces were lowered into the building. Aaron Burkhardt of KPFF described how the firm managed the design and installation of the innovative yet simple seismic system. These daylight-filled spaces nicely contrast with the more warmly-lit theater spaces, which often host sold-out performances.



Daylighting



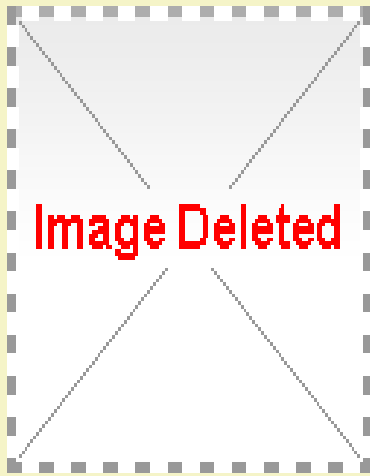
Gym becomes Recital Hall

The materials used in the Recital Hall and Main Theater successfully merged modern touches into this historic piece of PSU's performing arts program. Bamboo, a rapidly renewable material contributing to the LEED credits, provides a simple yet striking backdrop for performances in the Recital Hall. The acoustics were also greatly improved; in large part by removing a large air handling unit from above the Main Theater. Mike Tingley described how the unit had previously made so much excessive noise that PSU did not run the air conditioning during a performance - which, as you can imagine, caused the Main Theater to heat up quite quickly. So, ultimately, removing the air handler solved a noise and comfort issue.

Throughout the entire process, the project team came up with improved solutions to achieve the end result that PSU ultimately desired. For instance, instead of using an elevator lift for uneven floor heights and ADA compliance, Howard S. Wright was able to

lower floor levels in one room to save money and create more efficient use of the classroom spaces. As described by Oleg Saidov of Howard S Wright, the project team was also able to keep all original staircases and stairwell entry doors of this four-story building in place while pouring a new foundation and constructing shear walls, making the building seismically sound.

In addition to the incredible structural solutions, the project team found ways to ensure the Go Oregon! stimulus money that was allocated to this project went back to the local economy by hiring Oregon companies. Chris Nordstrom of JELD-WEN described how they were contracted to supply and install



Restored Clock

windows that fit the unique needs of this building. The ultimate result was windows that fit with the historic aesthetic of Lincoln Hall, while also being low-maintenance, and highly energy efficient. The windows will increase energy efficiency so greatly that they were able to decrease the mechanical load for the building, and Interface Engineering was able to reduce the number of chilled beams needed in the classroom spaces.

Many of the renovation features that the architects, general contractor, and sub-contractors brought to this project were so seamlessly incorporated into the building it was almost unbelievable to hear each of them speak about the immense changes that had to occur to make Lincoln Hall really come together. From the massive structural alterations, down to the distinctive stone clock that PSU wanted operational again in the lobby, the renovation of Lincoln Hall seems to have been a beautifully choreographed performance of its own. Thanks to all the members of the Lincoln Hall project team who

participated as tour speakers for making this a fantastic CSI Program.

[Back to Top](#)

Membership

Every1Counts Membership Recruitment Campaign

Make 1 Phone Call
Send 1 Email
Have 1 Conversation

That's all it takes to recruit a member and participate in CSI's **Every1Counts Membership Campaign** and win one or more great prizes!

In addition to prizes, each new member makes CSI a stronger and more effective resource for you, whether you're an architect, contractor, product representative, project manager or an advisor. Take the initiative today. Identify and **recruit just 1 new member**-or more!

Recruiters have many chances to win-prizes will be awarded as members meet successive recruitment levels. There will be one grand prize drawing.

To learn more on how you can contribute to CSI's recruitment goals while receiving recognition and prizes, visit www.csinet.org/eoc.
(Excerpts from *CSI Weekly*)

Please Welcome Our New Members from August 2010

Bahram Madadvand, CSI-S, MPM; University of British Columbia;	member since 2010
Gregory S Mockford, CSI, AIA; Pinnell Mockford Architecture & Engineering;	member since 2010
Justin Norman, CSI; Woodfold Mfg. Inc.;	member since 2010
Sarah Lynn Schoening, CSI, CDT, AIA; Sarah Lynn Garrett, Architect;	member since 2010

Alan M Taylor, CSI; Pinnell Mockford Architecture & Engineering; member since 2010

Renewing Members in August 2010

Mark J. Atteridge, CSI; Deamor;	member since 2007
David C. Chaffin, CSI, CDT, AHC; HARD/SPECS;	member since 1998
Rod Clark, CSI, CDT; JELD-WEN;	member since 2005
Andrew W. Cleveland, CSI; Johns Manville;	member since 1981
Ralph DiNola, CSI; Green Building Services;	member since 2006
Richard Heiserman, FCSI, CCCA, AIA; Ankrom Moisan Associated Architects	member since 1986
John Herrmann, CSI, CDT; Bain Associates, Inc.;	member since 1991
Mark W. Jacobsen, CSI, CDT; Jacobsen Risk Management, Inc.;	member since 2007
Richard D. Jermain, CSI, CDT, AHC; Ingersoll Rand Security Technologies;	member since 2004
Allen Kullgren, CSI; Artek;	member since 2005
David D. Landrey, CSI, BS, LEED AP, MA; Raeco Specialty Cements;	member since 2004
Dennet W. Latham, RA, CSI, CCS; CH2M HILL;	member since 1980
Eric Nordby, CSI; Access Systems, LLC;	member since 2008
Rob Nordby, CSI; Access Systems, LLC;	member since 2006
Steve O'Hollaren, CSI; ICD High Performance Coatings;	member since 2009
Heather Peck, CSI; Metropolitan Exposition Recreation Commission;	member since 2008
Michael Steffen, CSI; Walsh Construction Co.;	member since 1999
Dan Stevens, CSI; Concrete Waterproofing Products, Inc.;	member since 2006
R. Ray Totten, CSI, CCS, AIA; Architects Barrentine.Bates.Lee AIA;	member since 1983
Eric R. Watson, CSI; Miller Consulting Engineers, Inc.;	member since 2003

Update Your Member Data: Institute and Chapter

Please keep your information up to date with The Institute and Portland Chapter. The Chapter relies on your information at The Institute. The easiest way to update is on-line. Go to [My CSI \(click here\)](#), then click "address/phone/Email" under "Update Your Profile", log-in at the log-in dialog box. Now you can update your information. Remember to SAVE.

Please review your choices in the tab "Supplementary Information". We'd like to include you in the new Region Directory, so make sure to check that box. CSI contacts you by Email. Please make sure that "Do Not E-mail" is not checked. 60 of our members have that checked and they are missing out. Remember to SAVE. You can also call Member services at 800-689-2900 and they will help you.



After updating your Profile with The Institute, please send the **Portland Chapter** an [Email \(click\)](#) or call 503-805-2500. Our primary contact with you is by email. If you don't want emails and e-news from The Institute, but want news and notices from Portland Chapter, please let us know that.

Institute and Chapter Help Members during Hard Time

CSI is here to assist members who are experiencing difficulties in renewing their membership. If this applies to you, contact The Institute's Member Services at csi@csinet.org or call **800-689-2900** and ask about the Member Loyalty Program.

If you are accepted for this program by The Institute, the Portland Chapter will offer you a similar program. Please contact us at Jane@portlandcsi.org or Call 503-805-2500.

[Back to Top](#)

Certification & Education

(from *CSI Weekly*)

Oct. 26 Free CDT Certificate Information Webinar!

Registration is now open for the Spring 2011 CDT and advanced certification exams. Still debating taking the Construction Documents Technologist (CDT) Certificate exam? Participate in the FREE CDT 101 webinar on the CDT Certificate October 26 at 2pm ET. The webinar will cover the requirements and resources needed for successful exam preparation and study. [Register now!](#)

Registration Open for Spring Exams

Registration is now open for the spring CDT and advanced certification exams (CCCA, CCS, CCPR) **March 28 - April 9, 2011**. The early registration deadline is **January 28, 2011** and the final registration deadline is **February 25, 2011**. [Learn more](#), or [register now](#).

Technical

What Is Specifiers' Share Group?

The Portland Chapter created the Specifiers' Share Group (SSG) as an informal noontime forum to keep professional construction specifiers abreast of products and technical issues in the construction industry. The group has eighty-one members from large and small firms and from architectural, engineering, and specialty consulting firms.



Fred Herbold,
CSI CCS

The most popular type of meeting is a presentation by an industry expert or product representative. The program should be certified by AIA or CSI's Construction Education Network (CEN) for professional continuing education units. The Chapter can provide credit for programs that comply with requirements but are not certified. Many of our programs have been presented by industry representatives who are Chapter members. Since it is a noon meeting, presenters often provide a lunch, which helps to build an audience.

The Share Group meets from 12:00 to 1:00 PM, on the second and fourth Thursday of each month. Zimmer Gunsul Frasca Architects (ZGF) hosts the meeting in their office at Twelfth and Washington. Meetings are arranged with and announced by co-chairmen Alexander Lungershausen and Fred Herbold. Our primary means of contact is by email.

We are always open to informative presentations, especially focused on sustainability. For representatives, SSG is a great forum to contact specifiers from many firms at one meeting. For specifiers, SSG is one of the easiest ways to keep up your education, and it's great to network with your colleagues. You do not have to be a Chapter member to attend or present, but we'll take the opportunity to sign you up.

Please Email us today. Click: [Alexander](#) or [Fred](#).

Get Involved - Gain Knowledge - Click on Graphic below - 6 Topic Areas



[Back to Top](#)

Perky's Notes

On Wednesday, October 13, 2010 while walking to Lee's car after the Lincoln Hall Tour, I was reminded

that I should write my Perky's Notes for the November issue of *The Predicator*.



The question always becomes, what topics should I discuss? I decided that my experience with Lincoln Hall would be a good starting point.

My first event of long term duration with Lincoln Hall was playing the violin in The ***Oregon Sinfonietta*** non-professional orchestra on the first level off Market Street.. Ellen Onstad said the room looked the same except that the windows were now clean - not painted over.

Perky Kilbourn,
PhD, CSI

One of the tour guests mentioned having graduated from Lincoln High School in 1949. I got to thinking about the 1940's. What I was doing then? From 1942 to 1946 my family (including me) was living on Leonard Street in North Portland (St. John's area). I was not in High School.

One of the things my family had then was a vegetable garden. They were also called victory gardens because this time was during The Second World War. Everybody was encouraged to have a vegetable garden to help the "war" effort.

I can remember growing winter squash, tomatoes, zucchini, yellow crook necked squash, lettuce, chard, and green beans. It is now 60 years later and my family is still gardening. Now Lee does almost all the work.

In late May and early June we planted peas, a couple of tomato and zucchini plants at the east wall of our church at south west 13th and Clay Streets in downtown Portland. The area gets a lot of sun in the early morning. It is the parking lot for the car of the clergy person for the church next to our church. The area has a gate which can be locked so the clergy's car (produce?) is safe.

Lee and I also lease plot number C-11 at Fulton Park Community Gardens. We have green beans, beets, kale, lettuce, spinach, tomatoes, zucchini and acorn squash. I get to weed between the plants while Lee weeds between the rows. We have been doing it for several years and get a lot of produce from this plot.

While Lee works in the garden I am reading books. The two most recent books are:

This book is overdue! How Librarians and Cybrarians Can Save Us All by Marilyn Johnson.

This is a delightful book which I recommended to my college friend, who is retired from having worked at the Library of Congress. My friend was not impressed and suggested a couple of other books which I will add to my list. It discussed how librarians were trying to get into the digital-computer age. They were having as much trouble as Specifications Writers. Most librarians seem to have computers figured out now.

Happens Every Day - An All Too True Story by Isabel Gillies is interesting. It was the memoir of a female actor who married an English major who got a teaching position in Oberlin, Ohio. Apparently a new female teacher "*stole his heart away*" so she took their two children and moved back to New York. She was living with her parents when the memoir ended. The Epilogue said she is happily remarried and living in New York.

I am just starting to read **The Secret Life of the Grown-up Brain - The Surprising Talents of the Middle-aged Mind** by Barbara Strauch - The Introduction discusses a definition of middle age. I am definitely not "middle aged," so I will continue to read to learn more.

Chapter Events & Information

Chapter Calendar of Events

Nov. 1 - 11:45 am

Next **Membership Committee Meeting**, Macadam's, 5833 SW Macadam

Nov. 9 - 5:30 pm

Chapter Meeting, Stimulating the Construction Industry through Urban Planning, Governor Hotel, 614 SW 11th Avenue

Nov. 30 - 11:30 am

Next **Program Committee Meeting**, PECEI, 1400 SW 5th Avenue, suite 700

Dec. 14 - 11:30 am

Chapter Meeting, EvergreenAviationMuseum's *Wings and Waves Water Park*, Governor Hotel, 614 SW 11th Avenue

Jan. 11 - 5:30 pm

Chapter Meeting, Economic Forecast with John Mitchell, Governor Hotel, 614 SW 11th Avenue

Feb. 8 - **Chapter Meeting**

Board Minutes - [Click Here](#) to read notes from the September meeting of the Board.



[Click Here to Write the Editor](#)

[Back to Top](#)



Institute and Region News

The Construction Specifications Institute (CSI): <http://www.csinet.org/>

The CSI Academies: Learn more and Register, [Click Here](#)

Northwest Region CSI: [Click on Map for Region Website.](#)

Northwest Region Conference 2011

Host: Willamette Valley Chapter CSI: <http://www.csiwvc.org/>

Location: Eugene Hilton, Eugene, Oregon

Dates: June 15 through 19, 2011



Are You Up-To-Date?

Is your current contact information correct on the CSI Institute website? Please take a moment to review your information and make sure that it reflects your current information. The Northwest Region CSI will be compiling the information for a new Region Directory that will be published spring 2011 and we don't want to leave anyone out. This directory has proven to be an invaluable tool in the past and is the go to resource for many people in the Region. It takes a while for the information to be updated on the Institute website, so we urge you to take a few minutes to review your information and make sure that it is correct. (see instructions in "Update Your Member Data" article, [Click Here](#))

Northwest Region Chapter Meetings and Contacts

Big Sky Chapter	(Last Tuesday) Jan O'Brien, CSI 406-245-6363
Capital Chapter	(Third Thursday) Chris Veit, CSI, CCS 503-390-0291
Cook Inlet Chapter	(Third Tuesday) Mark Hughes, CSI 907-267-5163

Idaho Chapter	(First Tuesday) Karen Morris, CSI 208-343-3620
Mt. Rainier Chapter	(First Thursday) Bob Kenworthy, FCSI, CCS 253-931-4904
Portland Chapter	(Second Tuesday) Jane Ellsworth, CSI 503-805-2500
Puget Sound Chapter	(Second Thursday) Andrew Estep, CS 206-382-3393
Spokane Chapter	(Second Thursday) Thomas Gerard, CSI 509-328-2771
Willamette Valley Chapter	(Last Thursday) Melanie Wittkop-Fort, CSI 541-485-0922



"My membership in CSI is not only fun,
it's part of my plan for long-term
employment in the industry..."



News from Allied Organizations

Portland Chapter AIA: <http://www.aiaportland.com/>.

Cascadia Green Building Council: <http://cascadiagbc.org/>

ASPE Columbia Pacific Chapter 54: <http://www.aspeportland.org/>
Chapter Meeting, Nov. 16, 5:30 pm - "Getting Paid !"

University of Oregon, Portland Campus: UO Evening Lecture Series, Paul Horton will speak on "Sustainable Transportation Networks" Nov. 12, 5:00 pm at White Stag Building, 70 NW Couch.

[Click Here to Read More and Register](#)

[**Back to Top**](#)



Try it FREE today.

This email was sent to jane@portlandcsi.org by fjherbold@comcast.net | [Update Profile/Email Address](#) | Instant removal with [SafeUnsubscribe™](#) | [Privacy Policy](#).

Portland CSI | P.O. Box 2958 | Vancouver | WA | 98668



PORTLAND CHAPTER CSI MONTHLY NEWSLETTER

THE PREDICATOR

Knowledge for Creating and Sustaining the Built Environment

December 2010

Volume 50 Number 04

In This Issue

- [President's Message](#)
- [Portland Goes Gold](#)
- [At the Last Chapter Meeting](#)
- [Membership](#)
- [Certification & Education](#)
- [Technical](#)
- [Perky's Notes](#)
- [Calendar, Minutes, Editorials](#)
- [Institute & Region News](#)
- [Allied Organizations' Events](#)

Quick Links

- [Register for Chapter Meeting Now](#)
- [Join the List of 50/50 Sponsors](#)
- [Last Month's Newsletter and Back Issues](#)

More About Us



We are the
Portland Oregon Chapter of the
Construction Specifications Institute
P.O. Box 2958

Dear Jane,

If you're a Portland Chapter CSI member, look for a special invitation to participate in our contest for new Chapter graphics . You should get it today or tomorrow.

Fred Herbold, editor

Next Chapter Meeting

EVERGREEN WINGS AND WAVES WATER PARK

Lunchtime, Tuesday, December 14, 2010



Dave Garske, Hoffman Construction Project Manager, will talk about the challenges of designing and constructing an indoor waterslide park over which the Owner would like to place a 747 airplane. That's right: on top of the building.

- How is a water park born and where do you start?
- How do you put a plane that was built to move and fly, on a building that is built to stay grounded?
- What was the planning that went into the actual lift?
- How do you design waterslides and park features that interact with the Plane and Building?
- How do you meet Evergreen's Mission Statement to "Inspire and Educate"?

Vancouver WA 98668
503-805-2500

[Email Portland Chapter](#)



[RESERVE NOW!](#)

**Lunch at the Governor Hotel
614 SW 11th Avenue**

11:30 - 11:45 Check-In

11:45 - 1:00 Lunch, Announcements & Presentation

\$25 -- members

\$30 -- non-members

Invite your favorite clients! Table of **8** only **\$180**

\$30 at the door

[Click Here to Register](#)

President's Message



Kaye Kloster, CSI

There are several radio stations that start broadcasting just holiday music during December. I love singing along to the old favorites, hearing new artist's renditions of the classic favorites. Mariah Carey just released a holiday CD. A couple years ago I bought Chris Isaac's holiday CD - he includes a couple songs I did not know. Chris definitely put his "own spin" on the holiday classics.

I can't help but wonder what classic holiday music will we be listening to 10 years from now? What will our grandchildren look forward to hearing during the holiday season?

If you think about it, the best songs and music are from early 20th century. "Jingle Bells" was written in 1857 by James Lord Pierpont. "**Jingle Bells**" is one of the best known and commonly sung winter songs in the world. It was written by and published under the title "One Horse Open Sleigh". **Rudolph the Red-nosed Reindeer**" was written in 1949 and the television movie and songs in 1964.

New music is created every day - the same notes Mozart used are still being combined in new ways. Each song written is new - a "one off" of that combination of notes and instruments and voices. Country western, R&B, rock n' roll, rap - all using the same notes but with extremely different results. But for a song to become a classic and transcend generations makes that combination of notes and words unique and special.

It reminds me of the design and construction industry - the designs are "one-off's". Buildings have had the same elements for centuries - walls, windows, doorway, floors and ceilings. Each element combined with a completely unique result. Like music, technology through the years has allowed simple features to be enhanced to meet the expectations of the occupants. They design operable windows now on office buildings! Oh, wait, all windows used to open...

We all have our own opinion of the finished products. Some older buildings are "updated" to appeal to current expectations. I remember when the Hilton Hotel downtown was renovated recently. Originally built in the 1960's its exterior was strong, monolithic and cold. The renovation included adding windows on the street level to create a warmer appeal, break up the cold, stony appearance.

Madonna recorded "Santa Baby" and updated some of the lyrics - replaced "a '54 convertible" with "an out-of-space convertible". I don't care for how she recorded the vocals either. Eartha Kitt's original is truly a classic and who really cares if she sings about a '54 convertible? A '54 convertible is probably worth a lot now!

I wish all of you and your families a wonderful holiday season. Enjoy and appreciate the traditions and "classics" that appear all around us. As the New Year approaches welcome in new ideas and innovations that improve upon prior versions.

[Back to Top](#)

Portland Chapter Goes Gold

Coming to the Chapter Website Soon:

We're building web-pages that are dedicated to our celebration of 50 years. Look for the Timelines, Photographs and Remembrances by past presidents on our website in the near future. It takes some effort to load it all, and we appreciate your patience.

Portland Chapter 50/50 Program

Help us celebrate the Portland Chapter's 50th anniversary. \$50 for 50 years. Your \$50 contribution will allow the Chapter to continue to make important contributions to the construction community.

- Education to enhance career development
- Networking at monthly meetings to build team partners
- Mentoring and Professional Share Groups
- Leadership training opportunities on the Local, Region and National level.
- Scholarships to students on a career path in the construction industry,
- Certification credentials and Continuing Education Credits
- Emerging Young Professionals Group to develop the next generation



Click it for 50/50 Program

Click Here: to pay by credit card or call 503-805-2500

Thank you for your continued support of Portland Chapter CSI.

Review of Last Chapter Meeting and Program

New Construction Projects Being Created by Urban Planning



Jodi Beebe, CSI

On the evening of November 9th, your Chapter's program featured Gerald Baugh, Urban Development Business & Industry Manager for the Portland Development Commission (PDC), moderating a panel discussion about urban planning and how the planning process leads to new construction projects. The panelists included: Chet Orloff, Chairman of the City of Portland's Central City Plan; Laura Kelly, Civic Plan Project Manager for the City of Beaverton; and Alisa Pyszka, Business Development Manager for the City of Vancouver.

All three cities are at various stages in their civic planning process . . .

[Click Here to Read More](#)

[Back to Top](#)

Membership

Every1Counts Membership Recruitment Campaign

Make 1 Phone Call -- Send 1 Email -- Have 1 Conversation

That's all it takes to recruit a member and participate in CSI's **Every1Counts Membership Campaign** and win one or more great prizes!

Recruiters have many chances to win-prizes will be awarded as members meet successive recruitment levels. There will be one grand prize drawing.

To learn more on how you can contribute to CSI's recruitment goals while receiving recognition and prizes, visit www.csinet.org/eoc.
(Excerpts from *CSIWeekly*)

Please Welcome Our New Members from August 2010

Brant J. Freeman, CSI; Brant Freeman and Associates;

member since 2010

Christine M. Gilman, CSI; Portland Public Schools;

member since 2010

Renewing Members in August 2010

Tana Bishop, CSI; Contractor Plan Center, Inc.;

member since 1999

Tim Cockburn, CSI, CDT; Ross & Associates Insurance Services, Inc.;
Ronald T. Crooks, CSI, CEO; Independent Building Inspections;
Jeff R. Humphreys, CSI, CDT; Group MacKenzie;
Brian D. Keil, CSI, CCPR; The Sherwin Williams Company;
Charlie R. King, BA, CSI;
Alan Loftesness, CSI; A-Tech/Northwest, Inc.;
Gale A. Schroeder, CSI; Willamette Graystone;
Douglas R. Winn, CSI;

member since 1991
member since 2005
member since 2004
member since 1996
member since 2005
member since 1979
member since 2009
member since 1992

Update Your Member Data: Institute and Chapter

Please keep your information up to date with The Institute and Portland Chapter. The Chapter relies on your information at The Institute. The easiest way to update is on-line. Go to [CSINet \(click here\)](#), log-in, then click "My CSI", then click "address/phone/Email" under "Update Your Profile". Now you can update your information. Remember to SAVE.

Please review your choices in the tab "Supplementary Information". We'd like to include you in the new Region Directory, so make sure to check that box. CSI contacts you by Email. Please make sure that "Do Not E-mail" is not checked. 60 of our members have that checked and they are missing out. Remember to SAVE. You can also call Member services at 800-689-2900 and they will help you.



After updating your Profile with The Institute, please send the **Portland Chapter** an **Email (click)** or call 503-805-2500. Our primary contact with you is by email. If you don't want emails and e-news from The Institute, but want news and notices from Portland Chapter, please let us know that.

Institute and Chapter Help Members during Hard Time

CSI is here to assist members who are experiencing difficulties in renewing their membership. If this applies to you, contact The Institute's Member Services at csi@csinet.org or call **800-689-2900** and ask about the Member Loyalty Program.

If you are accepted for this program by The Institute, the Portland Chapter will offer you a similar program. Please contact us at Jane@portlandcsi.org or Call 503-805-2500.

[Back to Top](#)

Certification & Education

January 20 Seminar on Energy Code Changes

Best Practices for 2010 Oregon Energy Code Compliance: *Commercial Buildings*

90 minute presentation

Lunch included

1.5 hours CEU

In 2010, the Oregon Building Codes Division released a significant update to the energy code for commercial buildings. The new energy code greatly improves the energy efficiency of buildings and building systems. The new code also seeks to encourage continual improvement in building energy efficiency. Samir Mokashi, Principal and Code Analyst at Evergreen Engineering, will present an overview of the key changes in the new Oregon Energy Efficiency Specialty code, including:

- *Basics of the new code;*
- *Compliance options and required software;*
- *Best practices for code compliance - envelope, lighting, and HVAC systems;*
- *A more in-depth look at the key changes in requirements for building envelope.*

Bring your questions and curiosity about Oregon's new energy code.

Thursday, January 20, 2011 - 12:00 to 1:30 PM

U of O Portland Campus, White Stag Block, 70 NW Couch Street

\$35 [Register Now](#) by email
or call Jane at 503-803-2500

This event is jointly sponsored by Portland Chapter CSI, Energy Trust of Oregon, and NEEA.

Registration Open for Spring Exams

Registration is now open for the spring CDT and advanced certification exams (CCCA, CCS, CCPR) **March 28 - April 9, 2011**. The early registration deadline is **January 28, 2011** and the final registration deadline is **February 25, 2011**. [Learn more](#), or [register now](#).

Register for Portland Chapter CDT Exam Study Classes

Portland Chapter will offer a series of classes that will assist you preparing for the CSI CDT Exam. The 8-class series will begin February 3rd. The location has not been confirmed at this time. Cost for members is \$100 and non-members is \$150.

For current information and registration [Click to E-mail Jane](#) or call 503-803-2500.

Technical

Join or Present to Specifiers' Share Group

Please Email us today. Click: [Alexander](#) or [Fred](#).

Get Involved - Gain Knowledge - Click on Graphic below - 6 Topic Areas



[Back to Top](#)

Perky's Notes



The December 14 lunchtime program is to discuss activities near the Evergreen Museum in McMinnville - I really enjoy going to the Evergreen Museum because I know some of its history. Way back when I was 13 or 14 my father asked me if I wanted to go for a ride in a helicopter. I of course said "yes." -----

[Click Here to Read More](#) about this experience and more interesting notes by Perky.

Perky Kilbourn,
PhD, CSI

Chapter Events & Information

Dec. 13 - 11:45 am

Next **Membership Committee Meeting**, Macadam's, 5833 SW Macadam

Dec. 14 - 11:30 am Lunch Meeting

Chapter Meeting, Evergreen Aviation Museum's *Wings and Waves Water Park*, Governor Hotel, 614 SW 11th Avenue

Dec. 21 - 11:30 am

Next **Program Committee Meeting**, PECEI, 1400 SW 5th Avenue, suite 700

Jan. 11 - 5:30 pm

Chapter Meeting, Economic Forecast with John Mitchell,
Governor Hotel, 614 SW 11th Avenue

Feb. 8 - **Chapter Meeting**

Board Minutes - [Click Here](#) to read notes from the October meeting of the Board.

The Predicator - [Click Here to Write the Editor](#)

[Back to Top](#)



Institute and Region News

The Construction Specifications Institute (CSI): <http://www.csinet.org/>

The CSI Academies: Learn more and Register, [Click Here](#)
Northwest Region CSI: Click on Map for Region Website.

Northwest Region Conference 2011

Host: Willamette Valley Chapter CSI: <http://www.csiwvc.org/>

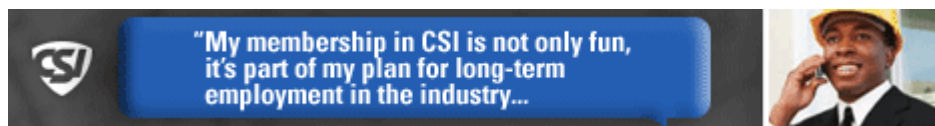
Location: Eugene Hilton, Eugene, Oregon

Dates: June 15 through 19, 2011



Northwest Region Chapter Meetings and Contacts

Big Sky Chapter	(Last Tuesday) Jan O'Brien, CSI 406-245-6363
Capital Chapter	(Third Thursday) Chris Veit, CSI, CCS 503-390-0291
Cook Inlet Chapter	(Third Tuesday) Mark Hughes, CSI 907-267-5163
Idaho Chapter	(First Tuesday) Karen Morris, CSI 208-343-3620
Mt. Rainier Chapter	(First Thursday) Bob Kenworthy, FCSI, CCS 253-931-4904
Portland Chapter	(Second Tuesday) Jane Ellsworth, CSI 503-805-2500
Puget Sound Chapter	(Second Thursday) Andrew Estep, CS 206-382-3393
Spokane Chapter	(Second Thursday) Thomas Gerard, CSI 509-328-2771
Willamette Valley Chapter	(Last Thursday) Melanie Wittkop-Fort, CSI 541-485-0922



News from Allied Organizations

Portland Chapter AIA: <http://www.aiaportland.com/>.

Cascadia Green Building Council: <http://cascadiagbc.org/>

ASPE Columbia Pacific Chapter 54: <http://www.aspeportland.org/>

[Back to Top](#)

[Forward email](#)



This email was sent to jane@portlandcsi.org by fjherbold@comcast.net | [Update Profile/Email Address](#) | Instant removal with [SafeUnsubscribe™](#) | [Privacy Policy](#).

Portland CSI | P.O. Box 2958 | Vancouver | WA | 98668



PORTLAND CHAPTER CSI MONTHLY NEWSLETTER

THE PREDICATOR

Knowledge for Creating and Sustaining the Built Environment

January 2011

Volume 50 Number 05

In This Issue

- [President's Message](#)
- [Portland Goes Gold](#)
- [At the Last Chapter Meeting](#)
- [Membership](#)
- [Certification & Education](#)
- [Technical](#)
- [Calendar, Minutes, Editorials](#)
- [Institute & Region News](#)
- [Allied Organizations' Events](#)

Quick Links

- [Register for Chapter Meeting Now](#)
- [Join the List of 50/50 Sponsors](#)
- [Last Month's Newsletter and Back Issues](#)
- [More About Us](#)



We are the
Portland Oregon Chapter of the
Construction Specifications Institute
P.O. Box 2958
Vancouver WA 98668
503-805-2500

Dear Jane,

The Portland Chapter CSI wishes you a Happy New Year !

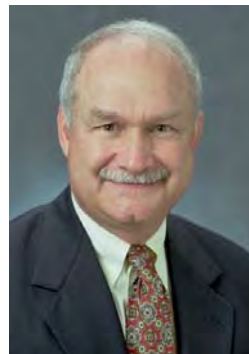
Please try the "Click Here" features to quickly navigate to your desired destination.

Members: Express your opinion about Graphics Competition Entries. A survey will land in your inbox in a few hours.

[Next Chapter Meeting](#)

2011 ECONOMIC FORECAST SIGNS OF AN EARLY SPRING? with JOHN MITCHELL

Tuesday Evening, January 11, 2011



Please join us Tuesday, January 11, 2011 for an enlightening and lively 2011 economic forecast by Portland's world-renowned economist, John Mitchell. Mr. Mitchell will discuss current economic conditions, major economic influences and how it relates to the recovery of the construction industry.

[Click Here](#) to learn about John Mitchell

RESERVE NOW!
Dinner at the Governor Hotel

Email Portland Chapter



614 SW 11th Avenue
5:30 - 6:30 Networking
6:30 Dinner & Announcements
7:00 Program

\$40 -- members

\$50 -- non-members

Invite your favorite clients! Table of **8** only **\$280**

\$50 at the door

[Click Here to Register](#)

President's Message



Kaye Kloster, CSI

I love clean slates, fresh starts and taking the "path less traveled". There's a certain excitement and anticipation with all three. I want to thank the CSI program committee for organizing and executing the December meeting. The topic was the "Wings and WavesWaterPark" Hoffman Construction is building in McMinnville at the Evergreen Aviation campus. We held the meeting at lunch time and packed the room with over 80 attendees! Dave Garske, Hoffman project manager, described the vision of project owner, Del Smith, and exactly how many details are involved in landing a 747 at the McMinnville airport, how to get it across the road and how to hoist it onto the building. If you missed the presentation you can visit YouTube. Search for "747 placed atop Evergreen water park building". Christyn Halliday contributed a review of the presentation in this month's newsletter.

Our January meeting has a familiar face returning - John Mitchell will give us his 2011 economic forecast "Early Signs of Spring?" John is able to make even economics entertaining. I think all of us are looking for any sign of economic improvement. I hope to see you at the Governor Hotel, January 11, 2011 at 5:30.

The CSI Board will have three board member openings - Bud Henson, Steve Gray and Glen Miller's terms are ending June 30, 2011. Each of them has done a great job and generously donated their time and energy to CSI. We will also be electing a new treasurer and secretary for the Board. These two positions involve you in more detailed CSI business. All positions are great opportunities for learning how to work within a group, time management and diplomacy. Please contact Jane Ellsworth or me if you are interested in becoming a CSI Board member.

I believe in lifelong learning and if you share this philosophy with me please take advantage of the upcoming CDT classes. The classes serve as an opportunity for anyone to expand their knowledge of construction documents, the construction process, and the roles and responsibilities of the parties involved in construction projects. The evening classes begin January 17 and end March 24th. I took the classes a couple years ago and not only learned a lot but enjoyed the camaraderie and some lively discussions with my classmates. Michael Madias has contributed a more detailed description of the classes and optional exam in this newsletter.

Roland Carlson, OrePac, has stepped up to chair our golf committee. We still need a chair for the education committee. Please let me know if you are interested in planning two or three educational events for CSI members. This is a great opportunity for leadership training and as always, a little trial and error!

The CSI Industry Forum has made huge progress and has secured a keynote speaker for our May event. This has been a challenging task in the past. Thanks to Don Stastny for providing the contact needed. Look for a special announcement from CSI with the details.

So much for a "clean slate"! I hope 2011 provides plenty of new opportunities and challenges for you!

[**Back to Top**](#)

Portland Chapter Goes Gold

Coming to the Chapter Website Soon:

We're building web-pages that are dedicated to our celebration of 50 years. It now looks as though the video made during the Celebration Event in September will be finished first. Please stay tuned in to *The Predicator* for the latest news.

Portland Chapter 50/50 Program

Help us celebrate the Portland Chapter's 50th anniversary. \$50 for 50 years. Your \$50 sponsorship will allow the Chapter to continue to make important contributions to the construction community.

[Click Here](#): to pay by credit card
or call 503-805-2500

Thank you for your continued support of Portland Chapter CSI.



Click to
Sponsor

Review of Last Chapter Meeting and Program

Evergreen Wings and Waves Water Park - How to Lift a 747 On Top a Building



If you were not there, you missed a great program narrated by Dave Garske of Hoffman Construction. This was also the Chapter's first lunch-time meeting/program, and a great success it was; attended by 85 folks.

Christyn Halliday, CSI, CDT, contributes the following well illustrated summary . . .

[Click Here to Read Christyn's Article](#)

[Back to Top](#)

Membership

Every1Counts Membership Recruitment Campaign

Make 1 Phone Call -- Send 1 Email -- Have 1 Conversation

That's all it takes to recruit a member and participate in CSI's **Every1Counts Membership Campaign** and win one or more great prizes!

Recruiters have many chances to win-prizes will be awarded as members meet successive recruitment levels. There will be one grand prize drawing.

To learn more on how you can contribute to CSI's recruitment goals while receiving recognition and prizes, visit www.csinet.org/eoc.
(Excerpts from *CSIWeekly*)

Please Welcome Our New Members from October & November 2010

Roland Marcus Carlson, CSI; Orepac Building Products; member since 2010
Peter J. Hiebert, CSI; Shanahan's Lp; member since 2010
S. Ross Wagner, CSI; Architectural Product Sales, LLC; member since 2010
Donald E. Prentiss, CSI; Architectural Product Sales, LLC; member since 2010

Renewing Members in October & November 2010

J. Laurence Chew, CSI, CCS; JLC Architectural Consulting; member since 1989
James L. Cundiff, CSI; Cundiff Engineering, Inc.; member since 1989
David R. Dillon, CSI; Euclid Chemical; member since 2010
Craig Dodge, CSI; Ideate, Inc.; member since 2007
Danny E. Elkins, CSI; D & R Waterproofing, Inc.; member since 2007
Ray E. Elkins, CSI; D & R Waterproofing, Inc.; member since 2007
Stephen A. Hubbard, CSI; Mutual Materials Company; member since 1993
Lowell A. Jenson, CSI, CDT; member since 1999
Neil Y. Lee, CSI, CDT, AIA; LEEKA Architects & Planners; member since 1994
Donald Long, CSI, CCPR; Grace Construction Products; member since 1999
Mike J. Manzi, CSI, CDT, RA, LEED AP; Boora Architects; member since 2010
Adonica Marshall, CSI, CDT; Yost Grube Hall Architecture; member since 2002
Michael K. Murphy, CSI, CDT; Parker Paint Mfg. Co.; member since 2006
Scott L. Portman, CSI; Bostik, Inc; member since 2004
David A. Pugh, Jr., CSI; Giffin Bolte Jurgens; member since 2006
Scott A Tice, CSI; Tice Industries, Inc; member since 2002
Toby C. White, CSI; Forensic Building Consultants; member since 2004
Terry Wildeboer, CSI; Isolatek International; member since 1991
David C. Young, CSI; RDH Building Sciences Inc.; member since 2004
Jim Young, CSI; NW Wall & Ceiling Bureau; member since 1999
Tom D. Anderson, CSI; Assa Abloy DSS; member since 2003
Jonathan Wayne Berg, CSI; Performance Contracting, Inc.; member since 2008
Marjorie S. Chang Fuller, CSI; Hoffman Construction; member since 1996
Bill Coady, CSI, CCPR; Guardian Industries Corp.; member since 1994
Chris S Combs, CSI; Dow Corning; member since 2010
Elizabeth Korrin Hart, CSI, CDT; Tremco, Inc; member since 2008
Amy K. Hjelte, CSI, CCS; LRS Architects, Inc.; member since 2002
Bassam Khalifeh, CSI; WashingtonCounty - Facilities; member since 1989
Scott G. King, CSI; Northwest Solar Solutions; member since 2009
John Kouba, CSI; Malarkey Roofing Company; member since 2001
John Lamb, CSI; Structural Waterproofing Consultants, Inc.; member since 1983
Thomas R. Lebo, CSI, CDT; Brown and Caldwell Consultants; member since 1998
Melissa M. Marton, CSI; Haworth Inc.; member since 2006
Steven L. McBride, CSI; Professional Roof Consultants, Inc; member since 2002
Jeff McIntyre, CSI, CDT; Rodda / Cloverdale Paint Company; member since 2006
Chuck Page, CSI, CDT; Dealers Supply Co., Inc.; member since 1986
Joan A. Schaefer, CSI, CCPR, USGBC; Solatube International, Inc.; member since 1995
Robert W. Simmons, FCSI, CCPR, BS, CEO; R.W. Simmons & Assoc. Inc; member since 1989
Christine M. Steel, CSI, CCS; Port of Portland; member since 1991
Walt Suman, CSI, CDT; TekTerrior Systems; member since 1985
Randy E. Tessman, CPA, CSI, CDT; Benjamin Moore Paints; member since 1995
Christopher K. Veit, CSI, CCS; Carlson/Veit Architects, P.C.; member since 1983
Stephen Wobber, CSI, CDT; Great Northwest Construction Products; member since 1993

Update Your Member Data: Institute and Chapter

Please keep your information up to date with The Institute and Portland Chapter. The Chapter relies on your information at The Institute. The easiest way to update is on-line. Go to [CSINet \(click here\)](#), log-in, then click "My CSI", then click "address/phone/Email" under "Update Your Profile". Now you can update your information. Remember to SAVE.

Please review your choices in the tab "Supplementary Information". We'd like to include you in the new Region Directory, so make sure to check that box. CSI contacts you by Email. Please make sure that "Do Not E-mail" is not checked. 60 of our members have that checked and they are missing out. Remember to SAVE. You can also call Member services at 800-689-2900 and they will help you.



After updating your Profile with The Institute, please send the Portland Chapter an [Email \(click\)](#) or call 503-805-2500. Our primary contact with you is by email. If you don't want emails and e-news from The Institute, but want news and notices from Portland Chapter, please let us know that.

[Back to Top](#)

Certification & Education

January 20 Seminar on Energy Code Changes Best Practices for 2010 Oregon Energy Code Compliance: Commercial Buildings 90 minute presentation Lunch included 1.5 hours CEU

In 2010, the Oregon Building Codes Division released a significant update to the energy code for commercial buildings. The new energy code greatly improves the energy efficiency of buildings and building systems. The new code also seeks to encourage continual improvement in building energy efficiency. Samir Mokashi, Principal and Code Analyst at Evergreen Engineering, will present an overview of the key changes in the new Oregon Energy Efficiency Specialty code, including:

- *Basics of the new code;*
- *Compliance options and required software;*
- *Best practices for code compliance - envelope, lighting, and HVAC systems;*
- *A more in-depth look at the key changes in requirements for building envelope.*

Bring your questions and curiosity about Oregon's new energy code.

Thursday, January 20, 2011 - 11:30 to 1:30 PM
U of O Portland Campus, White Stag Block, 70 NW Couch Street
[Click Here to Register Now](#)

Members: \$25 Non-members & at the Door: \$35
Register before January 18 to assure you will have a lunch.
Questions? [Click to Email Michael](#)

This event is jointly sponsored by Portland Chapter CSI, Energy Trust of Oregon, and NEEA.

Registration Open for Spring Exams

Registration is now open for the spring CDT and advanced certification exams (CCCA, CCS, CCPR) **March 28 - April 9, 2011**. The early registration deadline is **January 28, 2011** and the final registration deadline is **February 25, 2011**. [Learn more](#), or [Register now](#).

Register for Portland Chapter CDT Study Classes

Portland Chapter will offer a series of classes that will assist you preparing for the CSI CDT Exam. The 8-class series will begin February 3rd. The location has not been confirmed at this time. Cost for members is \$100 and non-members is \$150.

[Click Here to Learn More & Register](#) or call 503-803-2500.
[Click Here to View the Class Schedule](#)

Technical

What Do You Say? Review of Specifiers' Share Group Presentation

This month, Roland Carlson, CSI, Senior Tyvek® Specialist for Orepac Building Products, reports on information he presented to the Specifiers' Share Group on December 9th. Roland discusses types of weather restitive barriers with a focus on fluid-applied systems and their detailing. He also touches on recent and future building code requirements for whole building air barriers and associated testing. To read Roland's article [Click Here](#) .

Join or Present to Specifiers' Share Group

Please Email us today. Click: **Alexander** or **Fred**.

Get Involved - Gain Knowledge - Click on Graphic below - 6 Topic Areas



[Back to Top](#)

Chapter Events & Information

Jan. 10 - 11:45 am

Next **Membership Committee Meeting**, Macadam's, 5833 SW Macadam

Jan. 11 - 5:30 pm

Next **Chapter Meeting**, Economic Forecast with John Mitchell,
Governor Hotel, 614 SW 11th Avenue

Jan. 18 - 11:30 am

Next **Program Committee Meeting**, PECEI, 1400 SW 5th Avenue, suite 700

Feb. 8 - 5:30 pm

Chapter Meeting, Oregon Sustainability Center, Governor Hotel, 614 SW 11th Avenue

Feb. 15 - 11:30 am

Program Committee Meeting, PECEI, 1400 SW 5th Avenue, suite 700

Mar. 8 - 5:30 pm

Chapter Meeting, Edith Green / Wendell Wyatt Federal Building Renovation,
Governor Hotel, 614 SW 11th Avenue

Board Minutes - [Click Here](#) to read notes from the November meeting of the Board.

The Predicator - [Click Here to Write the Editor](#)

[Back to Top](#)



Institute and Region News

The Construction Specifications Institute (CSI): <http://www.csinet.org/>

The CSI Academies: Learn more and Register, [Click Here](#)
Northwest Region CSI: Click on Map for Region Website.

Northwest Region Conference 2011

Host: Willamette Valley Chapter CSI: <http://www.csiwvc.org/>

Location: Eugene Hilton, Eugene, Oregon

Dates: June 15 through 19, 2011

[Click to Learn, Sponsor, or Register](#)



Northwest Region Chapter Meetings and Contacts

Big Sky Chapter	(Last Tuesday) Jan O'Brien, CSI 406-245-6363
Capital Chapter	(Third Thursday) Chris Veit, CSI, CCS 503-390-0291
Cook Inlet Chapter	(Third Tuesday) Mark Hughes, CSI 907-267-5163
Idaho Chapter	(First Tuesday) Karen Morris, CSI 208-343-3620
Mt. Rainier Chapter	(First Thursday) Bob Kenworthy, FCSI, CCS 253-931-4904
Portland Chapter	(Second Tuesday) Jane Ellsworth, CSI 503-805-2500
Puget Sound Chapter	(Second Thursday) Andrew Estep, CS 206-382-3393
Spokane Chapter	(Second Thursday) Thomas Gerard, CSI 509-328-2771
Willamette Valley Chapter	(Last Thursday) Melanie Wittkop-Fort, CSI 541-485-0922



News from Allied Organizations

Portland Chapter AIA: <http://www.aiaportland.com/>.

Cascadia Green Building Council: <http://cascadiagbc.org/>

ASPE Columbia Pacific Chapter 54: <http://www.aspeportland.org/>

[Back to Top](#)

[Forward email](#)



Try it FREE today.

This email was sent to jane@portlandcsi.org by jane@portlandcsi.org | [Update Profile/Email Address](#) | Instant removal with [SafeUnsubscribe™](#) | [Privacy Policy](#).

Portland CSI | P.O. Box 2958 | Vancouver | WA | 98668



PORTLAND CHAPTER CSI MONTHLY NEWSLETTER

THE PREDICATOR

Knowledge for Creating and Sustaining the Built Environment

February 2011

Volume 50 Number 06

In This Issue

- [President's Message](#)
- [Portland Goes Gold](#)
- [Help Plan a Program](#)
- [Membership](#)
- [Certification & Education](#)
- [Technical](#)
- [Calendar, Minutes, Editorials](#)
- [Institute & Region News](#)
- [Allied Organizations' Events](#)

Quick Links

[Register for Chapter Meeting Now](#)

[Join the List of 50/50 Sponsors](#)

[Last Month's Newsletter and Back Issues](#)

[More About Us](#)

Dear Jane,

We hope to see you at our next Chapter meeting, Tuesday, February 8, 5:30 PM, presenting "A Window to the Future".

A Window to the Future *Glass and Sustainable Design*

Glass is a major element of every architectural project. It provides a gateway for occupants to natural daylight and a visual connection to the outdoors. And as a dominant feature of the exterior, glass often provides the building's aesthetic signature.



Glass is also the largest single gateway to heat transfer both into and out of the building. As energy costs continue to rise and sustainability moves to the front of design priorities, building codes continue to restrict the amount of glass that can be used on a building.

Manufacturers have responded by making ever more options available, continually striving to bring the newest and best product to market with improved energy efficiency balanced with increased daylight and color neutrality.

February 8, CSI is hosting four major glass producers who will present the latest products that are available today.

- Bill Coady, CSI CCPR, Guardian Industries
- Dennis Trester, Cardinal Glass Industries
- Colleen Cameron, CSI, Pilkington



We are the
Portland Oregon Chapter of the
Construction Specifications Institute
P.O. Box 2958
Vancouver WA 98668
503-805-2500

[Email Portland Chapter](#)



- Dave Jonson, Sage Electrochromics

Selecting from hundreds of choices can be overwhelming and design professionals often choose from a very limited palette of one or two products they are comfortable with -project after project.

Join us on Tuesday, February 8 to demystify the choices by learning more about your options:

- Using new products to build your project vision
- Evaluating the numbers to meet performance objectives
- Advanced technologies for controlling heat and glare

RESERVE YOUR SPOT NOW!

www.portlandcsi.org

Host a table of your favorite architects, engineers & contractors.
Table of 8 only \$280

Tuesday, February 8, 2011

The Governor Hotel

SW Alder and 11th -- 3rd Floor Princeton Ballroom

5:30 Network with your Colleagues

6:30 - 8:45 Dinner by Jake's and Presentation

\$40 - CSI Members Reserved

\$50 - Non-Members and People who register at the door

Click! To Reserve

President's Message



Kaye Kloster, CSI

I welcome February because it is actually light at 5:00 when I think about heading home. The evidence of longer days always renews my spirit and gives me something to look forward to. The Portland Chapter of CSI is another force that always gives me something to look forward to. I have been involved with several committees and wanted to share with you the news:

The **Industry Forum** in May is taking shape with committee chair, **Jody Moore**. The date is May 4, the keynote speaker is Stefan Behnisch. A quick Google search provided this: **Stefan Behnisch** is the most promising European architect currently introducing state of the art techniques of sustainable architecture to the USA.

Our Chapter is going to continue to "tweak" the Industry Forum, our largest fund raising event, to reach as many interested professionals and community leaders in the Portland metro area. Look for more information about it in the next few weeks. Please contact **Jody Moore** or me if you are interested in sponsorship opportunities or you just want to make sure you know how to get a ticket for yourself - and perhaps a colleague and/or client.

Our golf tournament committee is getting busy planning our annual golf tournament. **Roland Carlson**,

Orepac; Mark Atteridge, DeaMor; Tony Fennig, PKA and Dena Cook, ZGF are working out the various details. We'll need volunteers!

I want to thank everyone who attended the January meeting with economist, John Mitchell. The unpredictability of the Oregon winter did create some anxiety with attendees. John's presentation "Signs of an early Spring?" was engaging as usual and certainly more hopeful than in the past.

Should weather or other circumstances change the time or date of any meeting we will notify all CSI members and anyone registered for the meeting.

The CSI Program committee is doing a great job of coordinating meetings for our membership. Please make sure you sign up for February's meeting "A Window to the Future, Glass and Sustainable Design". If you're not able to attend be sure to forward the newsletter on to a co-worker who may be interested.

I'll see you at the February 8th meeting!

[Back to Top](#)

Portland Chapter Goes Gold

Coming to the Chapter Website Soon:

We're building web-pages that are dedicated to our celebration of 50 years. Look for the Timelines, Photographs and Remembrances by past presidents on our website in the near future. It takes some effort to load it all, and we appreciate your patience.

Portland Chapter 50/50 Program

Help us celebrate the Portland Chapter's 50th anniversary. \$50 for 50 years. Your \$50 contribution will allow the Chapter to continue to make important contributions to the construction community.

- Education to enhance career development
- Networking at monthly meetings to build team partners
- Mentoring and Professional Share Groups
- Leadership training opportunities on the Local, Region and National level
- Scholarships to students on a career path in the construction industry
- Certification credentials and Continuing Education Credits
- Emerging Young Professionals Group to develop the next generation



Click it for 50/50 Program

[Click Here](#): to pay by credit card or call 503-805-2500

Thank you for your continued support of Portland Chapter CSI.

Help Plan a Program

The Program Committee Needs YOU !

If you've enjoyed the speakers and content at the monthly programs that the local chapter organizes each month or want to get visibility for a special pet project, the Programs Committee would love to have you and offers remote access to be a part of our monthly committee meeting if you're unable to make it in person.

If you thoroughly enjoyed the Portland Chapter's 50th Anniversary Celebration or last year's Industry Forum, then now's the perfect time to join the committee that makes all of that happen. Other recent programs include tours of newly-built, high-profile buildings



including Ziba's new headquarters, ZGF's 12th and Washington, Port of Portland, and Lincoln Hall, and dinner or luncheon discussions with industry leaders on topics such as the economy, urban planning and the construction industry, and the Wings and Waves Water Park, just to name a few. Upcoming programs and tours are being developed for the Oregon Sustainability Center, Edith Green/Wendell Wyatt federal building, and PGE Park, for example, and we need your help.



Click Me !

Volunteers are needed to bring in new ideas and to assist with making our monthly program's a success for our membership and the public. Committee members pair up to work on programs and have the support of others on the committee to ensure each event is successful. We'd welcome your help and ideas to the committee; so, please join us. And it's fun!

We meet the **third Tuesday of the month** at PECE's offices located at 100 SW Main Street, Ste. 1600 at the corner of First and Main from 11:30 a.m. to 1:00 p.m. and feel free to bring lunch with you.

Our next two meetings will be held on **Tuesday, February 15th** from 11:30 a.m. to 1:00 p.m. and **Tuesday, March 15th** at the same time.

For those who would prefer to participate remotely, feel free to join our monthly meeting at the time and dates noted above by using the following online link and conference call number:

<http://peci.na5.acrobat.com/csiprograms/>

Conf. Call Number: 888.450.5996

PIN: 392963

If you'd like more information about the Programs Committee or want to receive a monthly reminder to attend the meeting, please contact the Programs Committee Chair, Jodi Beebe, CSI, at jbeebe@peci.org or at 503.753.1266.

[Back to Top](#)

Membership

Every1Counts Membership Recruitment Campaign 2011

Make 1 Phone Call -- Send 1 Email -- Have 1 Conversation

Help our Chapter regain the effects of the recession. Recovery is just a phone call, or an email, or a conversation away. Visit www.csinet.org/eoc.

New and Renewing Members in December 2010

Mike L. Beeson, CSI, CDT; Western Architectural;	member since 1989
Erica L. Bitterman-Ryon, CSI; Precision Images;	member since 2000
D. R. 'Skip' Brown, III, CSI, CCS, AIA; Melvin Mark Properties;	member since 1989
Brian Butterfield, CSI, CDT; DeaMor Associates;	member since 2008
Colleen Cameron, CSI; Pilkington Glass;	member since 2007
Tom Coffey, CSI; Architectures;	member since 1999
Jerry Cunningham, CSI; Cold Spring Granite Company;	member since 2009
Colin P. Doherty, CSI, CDT; Port of Portland;	member since 2009
JoAnne Flood, CSI; Reeb Millwork;	NEW member 2010
Christyn Halliday, CSI, CDT; Hoffman Construction Company;	member since 2008
Stephen L. Haner, CSI; Mid-Valley Glass and Millwork;	member since 2007
Eric R. Hansen, CSI; Advanced Entry Systems;	member since 1997
Clarke Jewell, CSI, CDT; Olympian Precast, Inc.;	member since 1999
Jeff Kirsch, CSI; Industrial Design Corporation;	member since 1990
Scott Martin, CSI, CDT; Tremco Inc. Vulkem Paraseal;	member since 1995
Michael K. Murphy, CSI, CDT; Parker Paint Mfg. Co.;	member since 2006
Spencer Nath, CSI; Spencer & Sons, Inc.;	member since 2001

Rebecca L. Quas, CSI-S; Student;
Mark P. Schneider, CSI; Schneider, Kempker, & Clark, Inc.;
Robert Sharman, MBA, CSI, CDT; Rowe Fenestration;
Tim L. Stafford, CSI; Johns Manville;
Michael W. Thrailkill, CSI, AIA; Yost Grube Hall Architecture;
Troy L. Williams, CSI, CDT, RCDD; LeGrand North America;

member since 1993
member since 1997
member since 2008
member since 2010
member since 2004
member since 2007

Get Ready for Institute and Chapter Elections: Is Your Email Current?

Please keep your information up to date with The Institute and Portland Chapter. The Chapter relies on your information at The Institute. The easiest way to update is on-line. Go to [CSINet \(click here\)](#), log-in, then click "My CSI", then click "address/phone/Email" under "Update Your Profile". Now you can update your information. Remember to SAVE.

The Chapter election also depends on electronic response from you via email.

[Back to Top](#)

Certification & Education

Registration Open for Spring Exams

Registration is now open for the spring CDT and advanced certification exams (CCCA, CCS, CCPR) **March 28 - April 9, 2011**. The early registration deadline is **January 28, 2011** and the final registration deadline is **February 25, 2011**. [Learn more](#), or [register now](#).

Register for Portland Chapter CDT Study Classes

Portland Chapter will offer a series of classes that will advance your knowledge of construction industry practices and will assist you in preparing for the CSI CDT Exam. The 8-class series will begin February 10th at Ankrom Moisan Associated Architects. Cost for members is \$100 and non-members is \$150. For current information [Click Here](#) or call 503-805-2500. To register for this course [Click Here](#).

January 20 Seminar on Energy Code Changes

This seminar was a great success. It was attended by 40 people.

This event was jointly sponsored by Portland Chapter CSI, Energy Trust of Oregon, and NEEA.

Technical

Join or Present to Specifiers' Share Group

Please Email us today. Click: [Alexander](#) or [Fred](#).

Specifiers' Share Group meets the 2nd and 4th Thursday each month, noon-time, at ZGF's offices.

Get Involved - Gain Knowledge - Click on Graphic below - 6 Topic Areas



[Back to Top](#)

Chapter Events & Information

Feb. 8 - 5:30 PM Dinner Meeting

Next **Chapter Meeting**, "A Window to the Future: Glass and Sustainable Design"

Governor Hotel, 614 SW 11th Avenue

Feb. 10 - 12:00 PM

Specifiers' Share Group, Hydrophilic resinous coatings; ZGF, 1223 SW Washington

Feb. 15 - 11:30 AM

Next **Program Committee Meeting**, PECEI, 100 SW Main Street, suite 1600

Mar. 8 - 5:30 PM Dinner Meeting

Chapter Meeting, Edith Green/Wendell Wyatt Federal Building,
Governor Hotel, 614 SW 11th Avenue

Mar. 15 - 11:30 AM to 1:30 PM

Program Committee Meeting, PECEI, 100 SW Main Street, suite 1600

Apr. 12 - 5:30 pm Tour

Tour-Meeting, to be announced.

May 4 - **Industry Forum - Presentation by Stefan Behnisch**

Board Minutes - [Click Here](#) to read notes from the December meeting of the Board.

The Predicator - [Click Here to Write the Editor](#)

[Back to Top](#)



Institute and Region News

Prepare for Institute and Chapter Elections: Make sure that your email is current. Please email csi@csinet.org and include "election email address change" in the subject line. To preview the Insitiute election information, please visit www.csinet.org/election.

The Construction Specifications Institute (CSI): <http://www.csinet.org/>

The CSI Academies: Learn more and Register, [Click Here](#)

Northwest Region CSI: Click on Map for Region Website.

Northwest Region Conference 2011

Host: Willamette Valley Chapter CSI: <http://www.csiwvc.org/>

Location: Eugene Hilton, Eugene, Oregon

Dates: June 15 through 19, 2011



Northwest Region Chapter Meetings and Contacts

Big Sky Chapter	(Last Tuesday) Jan O'Brien, CSI 406-245-6363
Capital Chapter	(Third Thursday) Chris Veit, CSI, CCS 503-390-0291
Cook Inlet Chapter	(Third Tuesday) Mark Hughes, CSI 907-267-5163
Idaho Chapter	(First Tuesday) Karen Morris, CSI 208-343-3620
Mt. Rainier Chapter	(First Thursday) Bob Kenworthy, FCSI, CCS 253-931-4904
Portland Chapter	(Second Tuesday) Jane Ellsworth, CSI 503-805-2500
Puget Sound Chapter	(Second Thursday) Andrew Estep, CSI 206-382-3393
Spokane Chapter	(Second Thursday) Thomas Gerard, CSI 509-328-2771
Willamette Valley Chapter	(Last Thursday) Melanie Wittkop-Fort, CSI 541-485-0922



I can see the payoff daily. I know my future is secure."
—Cynthia Belisle, CSI, CDT, AIA,
Architectural Consultant



News from Allied Organizations

Portland Chapter AIA: <http://www.aiaportland.com/>.

Cascadia Green Building Council: <http://cascadiagbc.org/>

ASPE Columbia Pacific Chapter 54: <http://www.aspeportland.org/>

[Back to Top](#)

[Forward email](#)



Try it FREE today.

This email was sent to jane@portlandcsi.org by fjherbold@comcast.net | [Update Profile/Email Address](#) | Instant removal with [SafeUnsubscribe™](#) | [Privacy Policy](#).

Portland CSI | P.O. Box 2958 | Vancouver | WA | 98668



PORTLAND CHAPTER CSI MONTHLY NEWSLETTER

THE PREDICATOR

Knowledge for Creating and Sustaining the Built Environment

March 2011

Volume 50 Number 07

In This Issue

[President's Message](#)

[Industry Forum 2011](#)

[Portland Goes Gold](#)

[Help Plan a Program](#)

[Membership](#)

[Certification & Education](#)

[Technical](#)

[Calendar, Minutes, Editorials](#)

[Institute & Region News](#)

[Allied Organizations' Events](#)

Quick Links

[Register for Chapter Meeting Now](#)

[Join the List of 50/50 Sponsors](#)

[Last Month's Newsletter and Back Issues](#)

[More About Us](#)

Dear Jane,

We hope to see you at our next Chapter meeting, Tuesday, March 8, 5:30 PM, presenting "Edith Green / Wendell Wyatt Federal Building: A Different Approach".

A Different Approach

***Edith Green / Wendell Wyatt Federal Building
Major Renovation and Rehabilitation***



The US General Service Administration has initiated, per congressional authorization, the Edith Green / Wendell Wyatt Federal Building Renovation and Rehabilitation project. This project is currently under construction.

The Edith Green / Wendell Wyatt Federal Building is considered by many to be the flagship building for the federal government in Portland, and is located in the central business district. The building complex is comprised of an eighteen story office tower which occupies one full city block and two levels of basement and parking.

The March Program will be a presentation covering these points:



We are the
Portland Oregon Chapter of the
Construction Specifications Institute
P.O. Box 2958
Vancouver WA 98668
503-805-2500

[Email Portland Chapter](#)



- Overall background on the project - Briefly covering the history, energy requirements, design and graphic images
- Overview of the process - Briefly covering the overall project approach, IPD, collocation, CMc+6 and the Socio-Economic intent of the project..
- How it was done - Procurement method, Snapshots and Socio-Economics attained on the project
- Impact upon the Profession - How it impacts how specifications are treated and how the specification writers need to look at creating opportunities for Socio-Economic Enterprises to be included in projects.

Our speakers include:

- Don Eggleston, CSI - SERA Architect
- Russ Pitkin, CSI CDT - SERA Architect
- Pat Brunner - General Services Administration
- Troy Dickson - Howard S. Wright

[RESERVE YOUR SPOT NOW!](#)

Host a table of your favorite architects, engineers & contractors.

Table of 8 only \$280

Tuesday, March 8, 2011

The Governor Hotel

SW Alder and 11th -- 3rd Floor Princeton Ballroom

5:30 Network with your Colleagues

6:30 - 8:30 Dinner by Jake's and Presentation

\$40 - CSI Members Reserved

\$50 - Non-Members and People who register at the door

[Click! To Reserve](#)

President's Message



Kaye Kloster, CSI

So far 2011 is flying by - we're only two months away from our Chapter's Industry Forum - the construction industry's premier event of the year. The date is May 4th and our keynote speaker is Stefan Behnisch. The Industry Forum has created two different venues both featuring Mr. Behnisch:

4:00 - 5:00	Architect presentations (details to follow)
5:00 - 7:00	Networking and vendor exhibits
7:00 - 8:30	Stefan Behnisch presentation and discussion with the audience.

Additional details for the Industry Forum are on our web site - check often for updates. To acquaint yourself with Stefan Behnisch and his firm visit:

www.behnisch.com.

The Chapter golf tournament is also taking shape - add Thursday, August 18th at Langdon Farms to your calendar. This year we'll tee off at 7:30 AM and complete the event with a barbeque lunch.

I'm looking forward to both of these events! **[Click Here for More](#)**

Don't miss our March program featuring the Edith Green/Wendell Wyatt Renovation and Rehabilitation. Our presenters include two Portland Chapter past presidents - Don Eggleston and Russ Pitkin, SERA; Pat Brunner, General Services Administration and Troy Dickson, Howard S Wright Constructors.

See you there!

[Back to Top](#)



Portland's Premier Networking Event of the Year
Featuring internationally-renowned architect Stefan Behnisch
Behnisch Architekten: Integrated Sustainability

May 4, 2011 - 4:00 to 8:30pm - The Heritage Ballroom - Governor Hotel, Portland Oregon

New this year: Different location, Improved format, Internationally-renowned speaker,
Lots more attendees!

[CLICK FOR GRAPHIC INFO](#) or [Click on the Banner above for webpage](#)

Portland Chapter Goes Gold

Coming to the Chapter Website Soon:

We're building web-pages that are dedicated to our celebration of 50 years. Look for the Timelines, Photographs and Remembrances by past presidents on our website in the near future. It takes some effort to load it all, and we appreciate your patience.

Portland Chapter 50/50 Program

Help us celebrate the Portland Chapter's 50th anniversary. \$50 for 50 years. Your \$50 contribution will allow the Chapter to continue to make important contributions to the construction community.

- Education to enhance career development
- Networking at monthly meetings to build team partners
- Mentoring and Professional Share Groups
- Leadership training opportunities on the Local, Region and National level
- Scholarships to students on a career path in the construction industry
- Certification credentials and Continuing Education Credits
- Emerging Young Professionals Group to develop the next generation



Click it for 50/50
Program

[Click Here](#): to pay by credit card or call 503-805-2500
Thank you for your continued support of Portland Chapter CSI.

Help Plan a Program

The Program Committee Needs YOU !

If you've enjoyed the speakers and content at the monthly programs that the local chapter organizes each month or want to get visibility for a special pet project, the Program Committee would love to have you and offers remote access to be a part of our monthly committee meeting if you're unable to make it in person.

If you thoroughly enjoyed the Portland Chapter's 50th Anniversary Celebration or last year's Industry Forum, then now's the perfect time to join the committee that makes all of that happen. Other recent programs include tours of newly-built, high-profile buildings including Ziba's new headquarters, ZGF's 12th and Washington, Port of Portland, and Lincoln Hall, and dinner or luncheon discussions with industry leaders on topics such as the economy, urban planning and the construction industry, and the Wings and Waves Water Park, just to name a few. Upcoming programs and tours are being developed for the Oregon Sustainability Center, Edith Green/Wendell Wyatt federal building, and PGE Park, for example, and we need your help.



Click Me !

Volunteers are needed to bring in new ideas and to assist with making our monthly program's a success for our membership and the public. Committee members pair up to work on programs and have the support of others on the committee to ensure each event is successful. We'd welcome your help and ideas to the committee; so, please join us. And it's fun!

We meet the **third Tuesday of the month** at PECI's offices located at 100 SW Main Street, Ste. 1600 at the corner of First and Main from 11:30 a.m. to 1:00 p.m. and feel free to bring lunch with you.

Our next meeting will be held on **Tuesday, March 15th**.

For those who would prefer to participate remotely, feel free to join our monthly meeting at the time and dates noted above by using the following online link and conference call number:

<http://peci.na5.acrobat.com/csiprograms/>

Conf. Call Number: 888.450.5996

PIN: 392963

If you'd like more information about the Programs Committee or want to receive a monthly reminder to attend the meeting, please contact the Programs Committee Chair, Jodi Beebe, CSI, at jbeebe@peci.org or at 503.753.1266.

[Back to Top](#)

Membership

Every1Counts Membership Recruitment Campaign 2011

Make 1 Phone Call -- Send 1 Email -- Have 1 Conversation

Help our Chapter regain the effects of the recession. Recovery is just a phone call, or an email, or a conversation away. Visit www.csinet.org/eoc.

New and Renewing Members in January 2011 are not yet available.

Get Ready for Institute and Chapter Elections: Is Your Email Current?

Please keep your information up to date with The Institute and Portland Chapter. The Chapter relies on your information at The Institute. The easiest way to update is on-line. Go to [CSINet \(click here\)](#), log-in, then click "My CSI", then click "address/phone/Email" under "Update Your Profile". Now you can update your information. Remember to SAVE.

The Chapter election also depends on electronic response from you via email.

[Back to Top](#)

Certification & Education

Portland Chapter CDT Study Classes

The 8-Class course is in its third week at time of publishing. We have 12 attendees with strong support from DeaMor Associates and ARC Oregon.
For current information [Click Here](#) or call 503-805-2500.

Technical

"What Do You Say?" - Notes from Specifiers' Share Group

Our guest presenters at Share Group on Thursday, February 10, were Angel Llanes of International Coatings Inc. and Bob Sallee, CSI, Rainier Chapter, of SalleeCo. Angel made a case for coating systems that are 100% solids and resin rich. His firm specializes in floor and wall coatings with these characteristics. Other manufacturers of similar coating systems may also offer comparable systems. Please read the linked article to learn more and how to specify this type of coating system: [Click to Learn More](#).

Join or Present to Specifiers' Share Group

Please Email us today. Click: [Alexander](#) or [Fred](#).

Specifiers' Share Group meets the 2nd and 4th Thursday each month, noon-time, at ZGF's offices.

Get Involved - Gain Knowledge - Click on Graphic below - 6 Topic Areas



[Back to Top](#)

Chapter Events & Information

Mar. 8 - 5:30 PM Dinner Meeting

Next **Chapter Meeting**, "A Different Approach: Edith Green / Wendell Wyatt Fed. Bldg."
Governor Hotel, 614 SW 11th Avenue

Mar. 15 - 11:30 AM

Next **Program Committee Meeting**, PECEI, 100 SW Main Street, suite 1600

Mar. 8 - 5:30 PM Dinner Meeting

Chapter Meeting, Edith Green/Wendell Wyatt Federal Building,
Governor Hotel, 614 SW 11th Avenue

Apr. 12 - 5:30 pm Tour

Tour-Meeting, to be announced.

Apr. 19 - 11:30 AM to 1:30 PM

Program Committee Meeting, PECEI, 100 SW Main Street, suite 1600

May 4 - Schedule will be announced

Industry Forum, Keynote speaker will be renowned German architect Stefan Behnisch.

Notes of Board Meetings

[Click Here](#) to read notes from January and prior Board meetings.

[Back to Top](#)



Institute and Region News

Prepare for Institute and Chapter Elections: Make sure that your email is current. Please email csi@csinet.org and include "election email address change" in the subject line. To preview the Institute election information, please visit www.csinet.org/election.

The Construction Specifications Institute (CSI): <http://www.csinet.org/>

The CSI Academies: Learn more and Register, [Click Here](#)
Northwest Region CSI: Click on Map for Region Website.

Northwest Region Conference 2011

Host: Willamette Valley Chapter CSI: <http://www.csiwvc.org/>

Location: Eugene Hilton, Eugene, Oregon

Dates: June 15 through 19, 2011



Northwest Region Chapter Meetings and Contacts

Big Sky Chapter	(Last Tuesday) Jan O'Brien, CSI 406-245-6363
Capital Chapter	(Third Thursday) Chris Veit, CSI, CCS 503-390-0291
Cook Inlet Chapter	(Third Tuesday) Mark Hughes, CSI 907-267-5163
Idaho Chapter	(First Tuesday) Karen Morris, CSI 208-343-3620
Mt. Rainier Chapter	(First Thursday) Bob Kenworthy, FCSI, CCS 253-931-4904
Portland Chapter	(Second Tuesday) Jane Ellsworth, CSI 503-805-2500
Puget Sound Chapter	(Second Thursday) Andrew Estep, CSI 206-382-3393
Spokane Chapter	(Second Thursday) Thomas Gerard, CSI 509-328-2771
Willamette Valley Chapter	(Last Thursday) Melanie Wittkop-Fort, CSI 541-485-0922



News from Allied Organizations

Portland Chapter AIA: <http://www.aiaportland.com/>.

Cascadia Green Building Council: <http://cascadiagbc.org/>

ASPE Columbia Pacific Chapter 54: <http://www.aspeportland.org/>

CHAPTER MEETINGS:

- March 15* [Insitu Exploration - The Inside Story](#)
- April 19* [Why Use/Be a Certified Estimator?](#)

· May 17* [A Question of Ethics - "Town Hall Meeting"](#)

Questions? Contact Curt Kolar, CPE 503-962-8840 kolarc@trimet.org

[Back to Top](#)

[Forward email](#)



This email was sent to jane@portlandcsi.org by fjherbold@comcast.net | [Update Profile/Email Address](#) | Instant removal with [SafeUnsubscribe™](#) | [Privacy Policy](#).

Portland CSI | P.O. Box 2958 | Vancouver | WA | 98668



Try it FREE today.



PORTLAND CHAPTER CSI MONTHLY NEWSLETTER

THE PREDICATOR

Knowledge for Creating and Sustaining the Built Environment

April 2011

Volume 50 Number 08

In This Issue

[President's Message](#)

[Industry Forum 2011](#)

[Review of the March Program](#)

[Portland Goes Gold](#)

[Help Plan a Program](#)

[Membership](#)

[Perky's Notes](#)

[Technical](#)

[Calendar, Minutes, Editorials](#)

[Institute & Region News](#)

[Allied Organizations' Events](#)

Quick Links

[Register for Chapter Meeting Now](#)

[Join the List of 50/50 Sponsors](#)

[Last Month's Newsletter and Back Issues](#)

[More About Us](#)

A WINDOW TO THE FUTURE GLASS AND SUSTAINABLE DESIGN



Glass is a major element of every architectural project. It provides a gateway for occupants to natural daylight and a visual connection to the outdoors. And as a dominant feature of the exterior, glass often provides the building's aesthetic signature.

Selecting from hundreds of choices can be overwhelming and design professionals often choose from a very limited palette of one or two products they are comfortable with -project after project.

April 12, CSI is hosting four major glass producers who will present the latest products that

are available today.

- Bill Coady, CSI, CCPR, Guardian Industries
- Dennis Trester, Cardinal Glass Industries
- Colleen Cameron, CSI, Pilkington
- Dave Jonson, Sage Electrochromics

Demystify the choices by learning more about your options:

- Using new products to build your project vision,
- Evaluating the numbers to meet performance objectives,
- Advanced technologies for controlling heat and glare.

[RESERVE YOUR SPOT NOW!](#)



We are the
Portland Oregon Chapter of the
Construction Specifications Institute
P.O. Box 2958
Vancouver WA 98668
503-805-2500

Email Portland Chapter



Tuesday, April, 11:30 AM

The Governor Hotel

SW Alder and 11th -- 3rd Floor Princeton Ballroom

Lunch by Jake's and Presentation

CSI Members Reserved B4 4-8: \$25

Non-Members and Registration at the Door: \$30

Invite Your Clients & Friends: Table of 8 only \$180

[Click! To Reserve](#)

President's Message



Kaye Kloster, CSI

As I prepared to write the April president's letter I reviewed the March issue and realized some of the information is no longer accurate.

The Portland Chapter's Industry Forum keynote speaker this year is Julie Snow out of Minneapolis, Minnesota. Originally we were promoting Stefan Behnisch. Due to some scheduling conflicts and my enthusiasm to "get the word out" our announcement was premature. The Industry Forum is shaping up nicely. Look for additional information regarding details on sponsorship and ticket availability in this issue and on the web site.

I grew up in Minneapolis. I'm looking forward to meeting Julie and learning more about her design philosophy and practices. Be sure to access her web site: www.juliesnowarchitects.com.

Unfortunately I will not be able to attend this month's meeting April 12th. Fred Herbold will stand in for me at the lunchtime presentation of "A Window to the Future". Be sure to access the link from the newsletter to register.

Aside from our local chapter meetings and events please take time to check out the following:

- The **CSI NW Region Conference in Eugene June 15 - 19th**. This year's conference will focus on diversity in the work place and include leadership and technical training sessions. Access www.nwregioncsi.org for additional information and registration.
- The **CSI National Convention and Construct 2011 in Chicago, IL, September 13 - 16th**. Held in conjunction with the CSI Annual Convention, CONSTRUCT offers AIA and CSI accredited education credits and networking opportunities. More information regarding the event can be found on the web site www.constructshow.com or follow the link from our local Chapter website.

I will look forward to seeing you at the Industry Forum on May 4th!

Kaye

INDUSTRY FORUM PORTLAND CSI



Portland's Premier Networking Event of the Year

Featuring architect Julie Snow, FAIA

"Truth in Materials : Innovation + Performance = Value"

May 4, 2011 - 4:00 to 8:30pm - The Heritage Ballroom
- Governor Hotel, Portland Oregon

New this year: Different location, Improved format, Renowned speaker, Lots more attendees!

[Click Here or on Banner for IF 2011 Webpage](#)



Julie Snow, FAIA

Review of the March Program

Grateful thanks go to past CSI president Don Eggleston for putting together such a knowledgeable panel for the presentation of the "Edith Green - Wendell Wyatt Office Building Modernization Project." The panel included:

- Don Eggleston AIA, CSI, of SERA Architects;
- Russ Pitkin AIA, CSI, LEED AP, of SERA Architects;
- Troy Dickson LEED AP of Howard S. Wright;
- Pat Bruner of the United States Government General Services Administration.

The project is one of GSA's largest projects. The team has been working on EGWW on and off for almost 6 years.

Don explained some of the history of the building, some of the energy efficient processes that they have implemented in this renovation, including lighting water use and other High Performance Design implications for resource sustainability. This project is tracking to achieve LEED Platinum. We saw informative slides of BIM models and scheduling.

Russ explained the specifications changes to accommodate a CMc (Construction Manager as Constructor) contract. The EGWW project is employing an Integrated Project Delivery (IPD) process, the first attempted by the GSA.

Pat Bruner is the only GSA contracting officer using this type of project delivery. He is pushing GSA to

adopt it agency wide as a standard for large complex projects. His position is that the government will not be able to afford the cost of construction in other delivery systems.

Troy addressed electronic tools that were developed and utilized on EGWW that he will employ on other projects because they worked so well.

Thank you again, gentlemen, for such a wonderful presentation.

By Ellen Onstad, CSI, CDT

Portland Chapter Goes Gold

Portland Chapter 50/50 Program

Help us celebrate the Portland Chapter's 50th anniversary. \$50 for 50 years. Your \$50 contribution will allow the Chapter to continue to make important contributions to the construction community.

- Education to enhance career development
- Networking at monthly meetings to build team partners
- Mentoring and Professional Share Groups
- Leadership training opportunities on the Local, Region and National level
- Scholarships to students on a career path in the construction industry
- Certification credentials and Continuing Education Credits
- Emerging Young Professionals Group to develop the next generation



Click it for 50/50 Program

Click Here: to pay by credit card or call 503-805-2500

Thank you for your continued support of Portland Chapter CSI.

Help the Program Committee

If you've enjoyed the speakers and content at the monthly programs that the local chapter organizes each month or want to get visibility for a special pet project, the Program Committee would love to have you and offers remote access to be a part of our monthly committee meeting if you're unable to make it in person.

We meet the **third Tuesday of the month** at PECE's offices located at 100 SW Main Street, Suite 1600, at the corner of First and Main from 11:30 a.m. to 1:00 p.m. and feel free to bring lunch with you.

For those who would prefer to participate remotely, feel free to join our monthly meeting at the time and dates noted above by using the following online link and conference call number:

<http://peci.na5.acrobat.com/csiprograms/>

Conf. Call Number: 888.450.5996

PIN: 392963

Contact: Jodi Beebe, CSI, at jbeebe@peci.org or at 503.753.1266.

Program Committee Needs You



Click Me !

[Back to Top](#)

Membership

Every1Counts Membership Recruitment Campaign 2011

Make 1 Phone Call -- Send 1 Email -- Have 1 Conversation

Help our Chapter regain the effects of the recession. Recovery is just a phone call, or an email, or a conversation away. Visit www.csinet.org/eoc.

Renewing Members in January 2011.

Diane C. Blitzer, RA, CSI, CCS; Write Angle P.C.; member since 1998
Keith V. Blodgett, CSI, CDT; Building Material Specialties; member since 1994
Steven E. Blum, CSI; Intel Corporation; member since 2010
Scott L. Finlinson, CSI, LEED AP, USGBC; USG Building Systems; member since 1991
Devin H. Follingstad, CSI, CDT; Myhre Group Architects, Inc.; member since 2007
Nick Haluschak, PE, CSI; NH Engineering, PLLC; member since 1988
Gregory A. Hranac, RA, CSI, CCS; U.S. Fish and Wildlife Service; member since 1998
Douglas G. Isaacs, CSI; Crawford Roll-Lite Door Sales of Oregon; member since 1988
Linda Joens, CSI; Cambria; member since 2007
Marvin Kaplan, CSI, LC; Harry L. Stearn, Inc.; member since 1993
Dan L. Kinion, CSI; Rodda Paint Company; member since 2011
Carl Morris Lee, CSI; Masonry and Ceramic Tile Institute of Oregon; member since 2009
Peter J. Lowry, CSI, CCCA; member since 2005
Joseph S. Mecalix, BA, CSI, CDT; Myhre Group Architects, Inc.; member since 2007
Jim Mitchell, CSI; Contract Wallcoverings, Inc.; member since 1992
Bryan Monroe, CSI, CCCA; Pacific Tech; member since 2002
Kenneth J. Mouchka, CSI, CCS, AIA; Mouchka Architecture LLC; member since 1980
Julie A. Nielsen, CSI; DeaMor Associates; member since 2006
Patrick R. O'Brien, CSI; O'Brien Constructors, LLC; member since 1983
Ellen M. Onstad, CSI, CDT; McGraw Hill Construction Dodge; member since 1995
Jerry L. Pozo, CSI, CDT, BS; BMI Products of Northern CA; member since 1995
Keith Pyeatt, CSI; Giffin Bolte Jurgens, PC; member since 2007
Mark L. Reeves, CSI; Hanset Corp.; member since 1999
Harrison Royce, CSI; SRM Architecture and Marketing; member since 2007
Jeffrey D. Spencer, CSI; Lease Crutcher Lewis; member since 2008
Danny Sullivan, CSI; Sullivan Architectural Products; member since 2006
Jay C. Vahsholtz, CSI; Lease Crutcher Lewis; member since 2008
Michael J. Watson, CSI, CDT; Pacific Architectural Products; member since 1990

New and Renewing Members in February 2011.

Sam Berg, CSI; Technical Glass Products; member since 2009
Brian D. Carleton, CSI; Carleton Hart Architecture, PC; member since 1995
Jody E. Cross, CSI, AHC; Ingersoll Rand; member since 1998
Matthew W. Davis, CSI, CDT; Rulon Company; member since 2006
Dan Elliott, CSI; Spec Products, Inc.; member since 2000
Jane Ellsworth, CSI; Portland CSI; member since 2003
David Fridenmaker, CSI; Salem Keizer Public Schools; member since 2006
Steven R. Gray, CSI, CDT; member since 2005
Fred Herbold, CSI, CCS; FJ Herbold Inc.; member since 1992
Clifford M. Hood, PE, CSI; Hood-McNees, Inc.; member since 1996
Jim M. Hutchin, CSI; Bridgetown Sales, LLC; member since 2009
Sean A. Langton, CSI; CertainTeed Gypsum; member since 2004
Fred M. Larson, CSI; Mercer Commercial Windows; member since 2003
Cherie M. McNabb, CSI, CDT; Forbo Flooring Systems; member since 1993
Marlo Medellin, CSI; Portland Housing Bureau; **NEW** member in 2011
Stephen R. Miller, CSI; Pacific Mat & Commercial Flooring; member since 1994
Ron Ogden, CSI; R. J. Ogden Associates, Inc.; member since 1986
Michael D. Prothe, CSI; Portland Housing Bureau; member since 2004
Jeff Shearer, CSI; Fred Shearer & Sons; member since 1999

[Back to Top](#)

Perky's Notes



Perky Kilbourn, CSI

Note 1 - Lee and I have been traveling again. In early February we flew to Florida. We spent a week getting warm and visiting with people with whom we were going to go on the cruise. We took a bus ride with these people to Miami and got on board the Celebrity "Century." We left Miami on February 14, arrived in St. Bart's on February 17, then visited Guadeloupe on February 18, Martinique on February 19 and St. Martin on February 20. We had a couple of days at sea before arriving on Coco Cay, Bahamas. We then returned to Miami and spent one more day with friends in Florida before flying home. Our daughters kept us informed about the snow you had while we were gone. I enjoy going on cruises because I like to read novels and not feel guilty for not reading science books or magazines.

Note 2 - Once we got back to Portland I started reading more serious literature. I was in high school during the Korean War and all I really knew about it was what I "learned" from *M*A*S*H*. Therefore I have been trying to learn something about the Korean War by reading a book on its history. I found the book *The Korean War - a history*, by Bruce Cummings. Part of the difficulties with understanding the Korean War was that everybody did not agree on what to call it. It was a civil war between the North and South Korea but the United States got involved because of President Truman's efforts to control the spread of Communist regimes. It was the first war that the United States did not win. Let us see how the latest military involvements go.

Note 3 - Another book I just finished was *FAME* by Tom Payne. This Tom Payne was born in 1971 and indicates his hopes that his book will give the reader some ideas about how the reader thinks about fame and famous people. Why do people want fame and what do some people do to get fame? The book made me think.

Note 4 - As well as reading I recently saw a thought provoking play. *FUTURA* was performed by Portland Center Stage in the downstairs Studio Theater. It was about the history and future of language and handwriting. As computers and emails become standard practice, will writing letters on paper by hand and sending them with stamps become impossible at some future time? I usually don't like science fiction but this was different and I could relate to it. The questions really are thought provoking:

Are people going to let machines do everything until the machines control our lives?
Are people going to forget how to use a pencil and paper?
Are paper books going to become non-existent?

Note 5 - I mourn the victims of the earthquake in Japan. I know about earthquakes but I have never been in a tsunami and the devastation looks terrible.

Technical

Join Us or Make a Presentation to Specifiers' Share Group

Please Email us today. Click: [Alexander](#) or [Fred](#).

Specifiers' Share Group meets the 2nd and 4th Thursday each month, noon-time, at ZGF's offices.

Get Involved - Gain Knowledge - Click on Graphic below - 6 Topic Areas



[Back to Top](#)

Chapter Events & Information

[Click Here for Complete Calendar](#)

April 12 - 11:30 AM Lunch Meeting

Next **Chapter Meeting**, "A Window to the Future," Governor Hotel, 614 SW 11th Avenue

April 19 - 11:30 AM

Next **Program Committee Meeting**, PECl, 100 SW Main Street, suite 1600

May 4 - 4:00 - 8:30 PM The Premier Construction Industry Event

Industry Forum, Keynote speaker will be renowned architect Julie Snow, FAIA.

Governor Hotel, 614 SW 11th Avenue

June 14 - **Chapter Meeting**

June 21 - 11:30 AM Program Committee Meeting, PECl, 100 SW Main Street, suite 1600

July 12 - **Chapter Meeting**

August 18 - **Golf Tournament**, Langdon Farms Golf Club, Aurora, Oregon

[Click Here for Golf Info](#)

Notes of Board Meetings

[Click Here](#) to read notes from January and prior Board meetings.

[Back to Top](#)



Institute and Region News

The Construction Specifications Institute (CSI): <http://www.csinet.org/>

The CSI Academies: Learn more and Register, [Click Here](#)

Northwest Region CSI: Click on Map for Region Website.

Northwest Region Conference 2011

[Download Info/Registration](#)

Host: Willamette Valley Chapter CSI

Location: Eugene Hilton, Eugene, Oregon

Dates: June 15 through 19, 2011

Northwest Region Chapter Meetings and Contacts

Big Sky Chapter	(Last Tuesday) Jan O'Brien, CSI 406-245-6363
Capital Chapter	(Third Thursday) Chris Veit, CSI, CCS 503-390-0291
Cook Inlet Chapter	(Third Tuesday) Mark Hughes, CSI 907-267-5163
Idaho Chapter	(First Tuesday) Karen Morris, CSI 208-343-3620
Mt. Rainier Chapter	(First Thursday) Bob Kenworthy, FCSI, CCS 253-931-4904
Portland Chapter	(Second Tuesday) Jane Ellsworth, CSI 503-805-2500
Puget Sound Chapter	(Second Thursday) Andrew Estep, CSI 206-382-3393
Spokane Chapter	(Second Thursday) Thomas Gerard, CSI 509-328-2771
Willamette Valley Chapter	(Last Thursday) Melanie Wittkop-Fort, CSI 541-485-0922





Visit www.csinet.org/joincsi



News from Allied Organizations

Portland Chapter AIA: <http://www.aiaportland.com/>.

Cascadia Green Building Council: <http://cascadiagbc.org/>

ASPE Columbia Pacific Chapter 54: <http://www.aspeportland.org/>

ASPE CHAPTER MEETINGS:

- April 19* [Why Use/Be a Certified Estimator?](#)
- May 17* [A Question of Ethics - "Town Hall Meeting"](#)

Questions? Contact Curt Kolar, CPE 503-962-8840 kolarc@trimet.org

[Back to Top](#)

[Forward email](#)



Try it FREE today.

This email was sent to jane@portlandcsi.org by jane@portlandcsi.org | [Update Profile/Email Address](#) | Instant removal with [SafeUnsubscribe™](#) | [Privacy Policy](#).

Portland CSI | P.O. Box 2958 | Vancouver | WA | 98668



PORTLAND CHAPTER CSI MONTHLY NEWSLETTER

THE PREDICATOR

Knowledge for Creating and Sustaining the Built Environment

June 2011

Volume 50 Number 10

In This Issue

[President's Message](#)

[Perky's Notes](#)

[Help Plan a Program](#)

[Membership](#)

[Calendar, Minutes, Editorials](#)

[Institute & Region News](#)

[Allied Organizations' Events](#)

Quick Links

[Join the List of 50/50
Sponsors](#)

[Last Month's Newsletter
and Back Issues](#)



We are the
Portland Oregon Chapter of the
Construction Specifications Institute
P.O. Box 2958
Vancouver WA 98668
503-805-2500

[Email Portland Chapter](#)

June Chapter Meeting

**Tour of JELD-WEN Field
June 14th at 4:30 p.m.**



On Tuesday, June 14th, Portland CSI's Program Committee is hosting a tour of JELD-WEN Field. At the tour, participants will learn more about the history of the JELD-WEN Field (formerly PGE Park), along with the process undertaken to make it a LEED certified Major League Soccer venue for the Timbers.

Our esteemed tour stop speakers include representatives from the General Contractor Turner Construction, JELD-WEN Field employees, Catena Consulting Engineers, Providence Hospital, and others who know the history of the field and contributed to its latest renovation.

For this tour, we are offering a tour-only option for \$10 per person and a tour with BBQ dinner option for \$30 for members and \$40 for non-members.

Tour highlights will include:



- History of PGE Park
- Renovation of Jeld-Wen Field for the Timbers MLS team
- Cantilevered Eastside canopy
- Issues and challenges with Tanner Creek
- Artificial turf selection and pitch maintenance
- Providence Sports Care Center
- LEED certification and sustainable elements of the project

This tour is limited to the first 100 registrants and is predicted to sell out; so, register early.

[Click HERE to register](#)

2011 Portland CSI Golf Tournament

Thursday, August 18th, 2011
Langdon Farms Golf Course

7:00 am - Registration
7:30 am- Shot Gun Start

Four Person Teams

Player Cost: \$450.00/ Foursome, \$125.00 per player

Includes: green fee, carts, snacks & post tournament awards dinner at the clubhouse

[Click HERE for more information and to register](#)

President's Message



Kaye Kloster, CSI

I usually write about our Chapter's upcoming activities. However, this past month I had the chance to have dinner with Julie Snow, internationally known architect, appetizers and a lively presentation by Bill Black on Integrated Project Delivery (IPD) and bid on a basketball signed by all the Trail Blazers.

The dinner with Julie Snow was the "icing on the cake" May 4th after the CSI Industry Forum. I know I have recognized the Industry Forum committee - Jody Moore, Corey Morris, Alexander Lungershausen, Bud Henson, Tony Divincenzo - but they all warrant another big THANK YOU for organizing and executing a successful event in every way. Julie Snow, our keynote speaker, gave a wonderful presentation on several projects. The one that stood out for me was the GSA land port of entry in Warroad, Minnesota. Do you know where Warroad is? I'm from Minnesota and had to refer to my map when I got home.



A week later, I attended the Haworth sponsored event with Bill Black presenting Mindshift "an award-winning, revolutionary approach to commercial real estate development based on a fresh model of planning and transparent collaboration throughout the process." The presentation began with a great appetizer buffet and beverages. During this networking session Bill Black came over to our table and soon all five of us were chatting like old friends. By the time Bill's presentation began it was like we knew him. If you are ever have a chance to see this presentation don't miss it! Melissa Marton, Haworth representative, has been a CSI member for several years and is the key program committee member for planning tours for us.

My (losing) silent auction bid for the basketball was at the Oregon Association of Minority Entrepreneurs (OAME) annual conference. I saw many CSI members there as well as construction industry professionals. The Contractors meeting at OAME (second Friday of the month at 8:00 AM) is one of the best meetings I regularly attend. Always positive and upbeat I never leave without learning something and expanding my network of colleagues.

My reason for mentioning these events to you is that there are opportunities to expand your horizons, learn something new and strengthen existing relationships practically every week in the Portland metro area. The CSI Industry Forum charged \$10 at the door - but you could get in for free is a vendor invited you! The Haworth event was free! Attending OAME meetings is also free. You don't even have to be a member! There should not have been any "economic" issues to prevent anyone from attending these events.

We also said a final good bye to Perky Kilbourn. Perky, a biologist and wife of Lee Kilbourn, was a regular contributor to The Predicator "Perky's Notes". Her concise descriptions of science and literature articles and studies were always interesting and a breath of fresh air. She will be missed.

Kaye

Evergreen Wings & Waves Waterpark Grand Opening!

As a follow up to our December 2010 meeting, Hoffman Construction has completed the Evergreen Wings & Waves Waterpark in McMinville. [Click on this link](#) to watch the YouTube promotional videos - just in time for the Grand Opening.

The Museum has opened! It includes 10 waterslides, a wave pool and a children's museum dedicated to teaching students about the power of water. Consisting of classic Evergreen Museum building design, the space features nearly 70,000 square feet of educational fun, highlighted by a massive Evergreen International Aviation B747-100 aircraft that rests on the top of the building. To learn more about the waterpark and museum go to: www.evergreenmuseum.org/waterpark/

Perky's Notes



Perky Kilbourn, CSI

Perky Kilbourn has written her last note. Other notes musical sung and played have faded away. Perky passed away on May 10, 2011. She may be gone, but she is not forgotten. Her family will be on the lookout for unpublished notes. Written notes about Perky from CSI members and friends may be published in future issues.

An inspiring memorial and tribute to Perky was held on May 22. Perky's variety of interests and depth of friends is a tribute to her full and productive life.

Lee adds this remark about Perky keeping him from any complacency. "We attended each other's conventions from the time of my presidency of Portland Chapter CSI until Perky started Consulting Clinical and Microbiological Laboratory. After that Perky did not want to attend scientific meetings unless someone she knew was being honored, which was about every other year. We continued attending CSI Conventions until 2006, because she was always looking

forward to seeing friends or someone special receive an honor. Local activities continued to be of interest, she attended her last meeting of Portland Chapter earlier this year."

Here is a link to the obituary in The Oregonian:

<http://obits.oregonlive.com/obituaries/oregon/obituary.aspx?page=lifestory&pid=151067887>

Help the Program Committee

If you've enjoyed the speakers and content at the monthly programs that the local chapter organizes each month or want to get visibility for a special pet project, the Program Committee would love to have you and offers remote access to be a part of our monthly committee meeting if you're unable to make it in person.

We meet the **third Tuesday of the month** at PECCI's offices located at 100 SW Main Street, Suite 1600, at the corner of First and Main from 11:30 a.m. to 1:00 p.m. and feel free to bring lunch with you.

For those who would prefer to participate remotely, feel free to join our monthly meeting at the time and dates noted above by using the following online link and conference call number:

<http://peci.na5.acrobat.com/csiprograms/>

Conf. Call Number: 888.450.5996

PIN: 392963

Contact: Jodi Beebe, CSI, at jbeebe@peci.org or at 503.753.1266.

Program Committee Needs You



Click Me !

[Back to Top](#)

Membership

Every1Counts Membership Recruitment Campaign 2011

Make 1 Phone Call -- Send 1 Email -- Have 1 Conversation

Help our Chapter regain the effects of the recession. Recovery is just a phone call, or an email, or a conversation away. Visit www.csinet.org/eoc.

New and Renewing Members in April 2011.

Mike R. Beamer, CSI-S; Oblique Content; member since 2011 - **NEW**
Dennis A. Brown, CSI; Capitol City Door, Inc.; member since 1992
David Byrne, CSI, CDT; Hennebery Eddy Architects; member since 2007
Mark C Cooney, CSI, CDT; Hubbell; member since 2005
Art Davis, CSI, CDT; Architect; member since 1992
Daniel S. Dewey, AIA; Bonneville Power Admin.; member since 2006
Richard Dusa, CSI; MKE & Associates, Inc.; member since 1996
Kelly J. Edwards, CSI, AIA; Scott-Edwards Architecture, LLP; member since 2009
John Herrmann, CSI, CDT; Bain Associates, Inc.; member since 1991
Don Iosty, CSI; Michael Rizza Co.; member since 2000
William N. Keefer, CSI, CDT; Mulvanny G2 Architecture; member since 2003
Michael Madias, CSI, CCS; DiBenedetto/Thomson/Livingstone; member since 1990
Randy A. McAdams, CSI; Atlas Supply; member since 2010
Jeff Rubino, CSI; Oldcastle Glass Vancouver; member since 2003
David H. Sommer, CSI; Interra Architectural Products; member since 2008
Susan Wurdeman, CSI, NCARB; Dull Olson Weekes Architects, Inc.; member since 1997
Cyrus Yamin, CSI, CDT, AIA; Multnomah County Facilities and Property Mgmt.; member since 2005

[Back to Top](#)

Chapter Events & Information

[Click Here for Complete Calendar](#)

June 14 - **Chapter Meeting**

June 21 - 11:30 AM Program Committee Meeting, PECL, 100 SW Main Street, suite 1600

July 12 - **Chapter Meeting**

August 18 - **Golf Tournament**, Langdon Farms Golf Club, Aurora, Oregon [Click Here for Golf Info](#)

Notes of Board Meetings

[Click Here](#) to read notes from prior Board meetings.

[Back to Top](#)



Institute and Region News

The Construction Specifications Institute (CSI): <http://www.csinet.org/>

The CSI Academies: Learn more and Register, [Click Here](#)

Northwest Region CSI: Click on Map for Region Website.

Northwest Region Conference 2011

[Download Info/Registration](#)



Host: Willamette Valley Chapter CSI
Location: Eugene Hilton, Eugene, Oregon
Dates: June 15 through 19, 2011



Northwest Region Chapter Meetings and Contacts

Big Sky Chapter	(Last Tuesday) Jan O'Brien, CSI	406-245-6363
Capital Chapter	(Third Thursday) Chris Veit, CSI, CCS	503-390-0291
Cook Inlet Chapter	(Third Tuesday) Mark Hughes, CSI	907-267-5163
Idaho Chapter	(First Tuesday) Karen Morris, CSI	208-343-3620
Mt. Rainier Chapter	(First Thursday) Bob Kenworthy, FCSI, CCS	253-931-4904
Portland Chapter	(Second Tuesday) Jane Ellsworth, CSI	503-805-2500
Puget Sound Chapter	(Second Thursday) Andrew Estep, CSI	206-382-3393
Spokane Chapter	(Second Thursday) Thomas Gerard, CSI	509-328-2771
Willamette Valley Chapter	(Last Thursday) Melanie Wittkop-Fort, CSI	541-485-0922



"My membership in CSI is not only fun,
it's part of my plan for long-term
employment in the industry..."



News from Allied Organizations

Portland Chapter AIA: <http://www.aiaportland.com/>.

Cascadia Green Building Council: <http://cascadiagbc.org/>

ASPE Columbia Pacific Chapter 54: <http://www.aspeportland.org/>

[Back to Top](#)

[Forward email](#)



Try it FREE today.

This email was sent to jane@portlandcsi.org by jane@portlandcsi.org | [Update Profile/Email Address](#) | Instant removal with [SafeUnsubscribe™](#) | [Privacy Policy](#).

Portland CSI | P.O. Box 2958 | Vancouver | WA | 98668



PORTLAND CHAPTER CSI MONTHLY NEWSLETTER

THE PREDICATOR

Knowledge for Creating and Sustaining the Built Environment

June 2011

Volume 50 Number 11

In This Issue

- [President's Message](#)
- [Help Plan a Program](#)
- [Membership](#)
- [Calendar, Minutes, Editorials](#)
- [Institute & Region News](#)
- [Allied Organizations' Events](#)

Quick Links

Last Month's Newsletter and Back Issues

We are the
Portland Oregon Chapter of the
Construction Specifications Institute
P.O. Box 2958
Vancouver WA 98668
503-805-2500

Email Portland Chapter



July Chapter Meeting

July Downtown Historic Walking Tour & Mixer

Tuesday, July 12th

Walking Tour starts at Kell's at 4:30 p.m.

Mixer starts at Kell's at 6:00 p.m.



CSI's Program Committee along with Emerging Professionals will be leading an historic downtown walking tour and an informal Summer Mixer afterwards on Tuesday, July 12th.

For those who want to participate in the walking tour, we will meet outside Kell's Restaurant & Pub located 112 Southwest 2nd Ave. at 4:30 p.m. The hour and a half tour will traverse 1st, 2nd and 3rd Avenues between Oak and Taylor discussing the historic buildings and context of the area.

Once the walking tour concludes, we will gather for an informal,

no-host Summer Mixer at Kell's to meet fellow CSI members and network. Although there is no cost for the walking tour, if you are interested, please register so that we can get a head count. We hope to see you at either or both parts of July's program.

[Click HERE to register](#)



Portland CSI 2011 Golf Tournament

New Time!
Thursday, August 18, 2011
Registration 6:30AM
Shotgun Start 7:30AM

New Location!
Langdon Farms Golf Course
24377 Northeast Airport Road
Aurora, OR 97002

Great Raffle Prizes!
IPAD 2 and many more!
BBQ lunch after the tournament

Hope to see you there!

For available sponsorships
and other information
go to www.portlandcsi.org

[Click HERE for more information and to register](#)

June Meeting Recap - Jeldwen Field

JELD-WEN Field (formerly PGE Park) has seen its share of changes over the last century. The recent chapter tour of the Field took participants through the history of the location, the recent renovations in preparation for the Portland Timbers inaugural season in the MLS, and the state-of-the-art Providence Rehabilitation Center. The Rehabilitation Center is a partner of the stadium and serves the public as well as the team.

The stadium was originally built by the Multnomah Athletic Club in 1926, but the site was in use by the Club for many years prior to the stadium construction. The recent renovations marks the third major renovation since 1926. There were several design and construction challenges during this renovation. The construction on the east side of the stadium had 2 phases that had to happen between playing seasons making scheduling difficult. One of these challenges was building a bridge over Tanner Creek, which still runs under the stadium in a sewer built in 1912 that was exposed during construction. The bridge had to carry a 400,000 pound capacity. The design also included a large 190'x120' steel and cedar canopy that has to tolerate high wind loads and the tremendous weight of the canopy itself.

The stadium operators are applying for a LEED Silver rating (awaiting certification) and earned credits in many areas including transportation, plumbing and energy. They are even earning LEED points with the feral cat program at the stadium, which allows them to cut back on using chemical products as pest control. The stadium is home to between 12-20 feral cats in a cooperative effort with the Humane

Society.

To learn more about the history of the stadium and the site you can visit the stadium. The east side of the stadium is open to the public (when there isn't an event happening) and outlines the history on wall panels, complete with a picture of Pele (who played his last professional game at the stadium).



Save The Date - August 9, 2011 Member Appreciation Picnic

Plan on joining your friends and colleagues at Historic Oaks Park for the Portland Chapter's first ever Member Appreciation Picnic on Tuesday, August 9, 2011. This event will be open to everyone. We encourage you to bring your spouse, significant other and family. We will arrive at our reserved space at approximately 4:30pm and begin serving dinner at 6:00pm. We will have games to play, prizes and discounted armbands for rides and skating will be available.

We are currently looking for sponsors for this event so that it can be offered to members at little or no cost. If you are interested in becoming a sponsor please contact:

Jodi Beebe - jbeebe@peci.org

Ellen Onstad - Ellen_onstad@mcgraw-hill.com

Chris Irwin - christineirwin@comcast.net

President's Message



Kaye Kloster, CSI

Members and Friends of CSI:

We've assembled a shorter newsletter for the month of July so you can get a quick update and get outside to enjoy the summer weather. Our June meeting was the tour of Jeld Wen Field. I was very impressed with the variety of tour stops that included feral cat feeding station, Tanner Creek and a Portland history lesson. CSI also gave out the Service awards to departing Board members: Steve Gray, Bud Henson, Glen

Miller and Amy Clements and President's appreciation awards to: Jody Moore, Alexander Lungershausen and Corey Morris for their work on the CSI Industry Forum; Fred Larson, Ellen Onstad, Christyn Halliday for their work on our Chapter's 50th anniversary event. The Al Hansen Award was given to Perky Kilbourn (posthumously) for her "countless contributions to the Portland Chapter: actions as a champion of the Chapter, willingness to work on projects for the benefit of the Chapter, continuing contributions to The Predicator and support of the Chapter". I was able to present the award to Perky's husband, Lee Kilbourn and daughters, Ellen Onstad and Laurie Kilbourn.

I must thank our Chapter Board member, Chris Irwin, for making sure the awards were ready to hand out at the meeting. Chris is much better at that type of responsibility than I am. We are lucky to have her on the Board. Chris was our treasurer and is now the Board secretary.

The upcoming CSI event highlights include:

- The first July CSI meeting in a very long time! On Tuesday, July 12, join us for a Downtown Historic walking tour and social mixer. The walking tour starts at Kell's at 4:30 p.m. and ends at Kell's by 6:00 p.m. This event is free to attendees - but you will have to cover any food and beverages consumed at Kell's!
- Our August event is the annual golf tournament. This year we've changed venues and will be golfing at Langdon Farms. The shotgun start is at 7:30 AM and we'll conclude the tournament with a barbeque lunch. We're very excited about the new location. We'll also be raffling off an Apple iPad.
- The CSI Program committee is also planning an event for the Chapter on our regular Tuesday night, August 9th. Look for more information about this event in the next week.
- In September the CONSTRUCT2011 and the CSI Annual Convention will be held in Chicago the 13th - 16th. For more information about this event go to www.constructshow.com.

I'm hoping you can attend one or more of these events!

Kaye

Help the Program Committee

If you've enjoyed the speakers and content at the monthly programs that the local chapter organizes each month or want to get visibility for a special pet project, the Program Committee would love to have you and offers remote access to be a part of our monthly committee meeting if you're unable to make it in person.

We meet the **third Tuesday of the month** at PECI's offices located at 100 SW Main Street, Suite 1600, at the corner of First and Main from 11:30 a.m. to 1:00 p.m. and feel free to bring lunch with you.

For those who would prefer to participate remotely, feel free to join our monthly meeting at the time and dates noted above by using the following online link and conference call number:

<http://peci.na5.acrobat.com/csiprograms/>

Conf. Call Number: 888.450.5996

PIN: 392963

Contact: Jodi Beebe, CSI, at jbeebe@peci.org or at 503.753.1266.

Program Committee Needs You



[Click Me !](#)

[Back to Top](#)

Membership

Every1Counts Membership Recruitment Campaign 2011

Make 1 Phone Call -- Send 1 Email -- Have 1 Conversation

Help our Chapter regain the effects of the recession. Recovery is just a phone call, or an email, or a conversation away. Visit www.csinet.org/eoc.

[Back to Top](#)

Chapter Events & Information

[Click Here for Complete Calendar](#)

July 12 - **Chapter Meeting**, Walking Tour of Historic Portland

[Click Here for Event Info](#)

August 18 - **Golf Tournament**, Langdon Farms Golf Club, Aurora, Oregon

[Click Here for Golf Info](#)

Notes of Board Meetings

[Chick Here](#) to read notes from prior Board meetings.

[Back to Top](#)



Institute and Region News

The Construction Specifications Institute (CSI): <http://www.csinet.org/>

The CSI Academies: Learn more and Register, [Click Here](#)
Northwest Region CSI: Click on Map for Region Website.

Northwest Region Chapter Meetings and Contacts

- Big Sky Chapter (Last Tuesday) Jan O'Brien, CSI 406-245-6363
- Capital Chapter (Third Thursday) Chris Veit, CSI, CCS 503-390-0291
- Cook Inlet Chapter (Third Tuesday) Mark Hughes, CSI 907-267-5163
- Idaho Chapter (First Tuesday) Karen Morris, CSI 208-343-3620
- Mt. Rainier Chapter (First Thursday) Bob Kenworthy, FCSI, CCS
253-931-4904
- Portland Chapter (Second Tuesday) Jane Ellsworth, CSI 503-805-2500
- Puget Sound Chapter (Second Thursday) Andrew Estep, CSI 206-382-3393
- Spokane Chapter (Second Thursday) Thomas Gerard, CSI 509-328-2771
- Willamette Valley Chapter (Last Thursday) Melanie Wittkop-Fort, CSI 541-485-0922



I can see the payoff daily. I know my future is secure.
—Cynthia Belisle, CSI, CDT, AIA, Architectural Consultant

News from Allied Organizations

Portland Chapter AIA: <http://www.aiaportland.com/>.

Cascadia Green Building Council: <http://cascadiagbc.org/>

ASPE Columbia Pacific Chapter 54: <http://www.aspeportland.org/>

[Back to Top](#)

[Forward email](#)



Try it FREE today.

This email was sent to jane@portlandcsi.org by jane@portlandcsi.org | [Update Profile/Email Address](#) | Instant removal with [SafeUnsubscribe™](#) | [Privacy Policy](#).

Portland CSI | P.O. Box 2958 | Vancouver | WA | 98668



PORTLAND CHAPTER CSI MONTHLY NEWSLETTER

THE PREDICATOR

Knowledge for Creating and Sustaining the Built Environment

August 2011

Volume 50 Number 12

In This Issue

[August Appreciation Meeting](#)

[Certification](#)

[President's Message](#)

[Membership](#)

[Calendar, Minutes, Editorials](#)

[Institute & Region News](#)

[Allied Organizations' Events](#)

Quick Links

Last Month's Newsletter and Back Issues

We are the
Portland Oregon Chapter of the
Construction Specifications Institute
P.O. Box 2958
Vancouver WA 98668
503-805-2500

[Email Portland Chapter](#)



August Chapter Meeting

Portland CSI Member Appreciation Picnic

**Tuesday, August 9th,
Oaks Park
Starts 4:30 PM**



The Portland Chapter CSI invites you and your family to join us at our first Member Appreciation Picnic on Tuesday, August 9 at Historic Oaks Park. The fun starts at 4:30 p.m. with dinner served about 6:00 p.m. Tuesdays the park has a special on thrill ride armbands - buy one get one free and you are welcome to arrive early and spend some time on the midway, or you can even take a short hike through the Sellwood Bottoms area.

Tucked away in Southeast Portland near the Sellwood Bridge is Oaks Amusement Park, one of the oldest continuously operated amusement parks in the United States. A modest operation, the park currently includes about two dozen rides that operate seasonally, a skating rink that is open year-'round, and picnic grounds. The Herschell-Spillman Carrousel is the heart beat of historic Oaks Park. A 1912 American carved piece of folk art, it is not to be missed on your visit to the park.

The Oaks has been a part of the lives of many Portlanders and other Oregonians for nearly a hundred years, and many people hold fond memories of it. The park is located below the east end of the Sellwood Bridge and parking is free.

We encourage you to bring your family, spouse or significant other to this event. Food and non-alcoholic drinks will be provided by the Chapter. This should be a great time to socialize and network with Chapter members in a relaxed setting. We request that you register for the picnic so we know how much food to plan for and we look forward to seeing everyone at Oak Park on August 9

[Click HERE to register](#)



Portland CSI 2011 Golf Tournament

New Time!
Thursday, August 18, 2011
Registration 6:30AM
Shotgun Start 7:30AM

New Location!
Langdon Farms Golf Course
24377 Northeast Airport Road
Aurora, OR 97002

Great Raffle Prizes!
IPAD 2 and many more!
BBQ lunch after the tournament

Hope to see you there!

For available sponsorships
and other information
go to www.portlandcsi.org

[Click HERE for more information and to register](#)

Certification Committee News

Earlier this year the committee (instructors and co-chairs) decided to tweak the CDT class with changes to its instructors and class format. We had a dozen eager and enthusiastic participants as classes began, and their response and feedback indicates the changes made were well-received.

ARC Oregon (formerly Ford Graphics) encouraged five of their employees to take the class and DeaMor Skylights added three more. We thank these companies for their commitment to ensure their staff are knowledgeable about construction documents.

From the class we had two people sit for the exam. They were not discouraged with

just missing a passing grade from last year's exam, and now the Chapter is proud to announce our newest CDT certificants: Reshma Basu and Mark Atteridge.

Congratulations!

For those interested in taking the Fall 2011 exams, the final registration deadline is August 26. You can take the exam from September 26 through October 8.

President's Message



Kaye Kloster, CSI

Friend and Members of CSI:

How I Spent the Summer of 2011

My husband and I signed up our 14 year old son, Mark, for OMSI's Lower Deschutes Rafting camp. He had never really gone to an overnight, week long camp before. He was apprehensive and I had to keep reassuring myself that if anything happened it was only a three hour drive to get him.

We had registered him for the camp weeks before but it was only the day before he was to leave that we downloaded and read through the three page list of supplies he was take. In the instructions from OMSI they actually warned us not to wait until the weekend before camp to shop and prepare our child. Here we were, less than 24 hours before he was to leave reading the list for the first time.

Just for your future reference, Andy and Bax stores close at 4:00 on Sundays. We learned that the hard way. However, there is truth in Fred Meyer's slogan "What's on your list today? You'll find it at Fred Meyer!" Because we found the tent, dry bags, mess kit, bug repellent, quick drying pants and shorts, fleece sweatshirt and non-cotton socks.

We got home and immediately put the tent up in our living room - twice for good measure. By 11:00 PM all three of us felt ready for the camping adventure. At 7:00 AM Monday morning at OMSI we gathered with twenty other campers and their parents to get checked in and meet the leaders. The campers did not look very excited. As parents we acted enthused, talked about how much fun it would be and reviewed the check list to make sure we did not forget anything. I told Mark to "Have fun" as we walked away. I didn't want him to see the tears - I knew I would miss him.

Mark had a wonderful time but insists the best thing that happened was when one of the boys in his raft fell out and the worst thing was the long bus ride back to Portland. I'm hoping in the coming weeks and maybe years, I'll hear more about the rafting camp experience.

I hope your summer has some memorable moments - enjoy them - it all passes so quickly!

Don't forget to sign up for the CSI golf tournament at Langdon Farms on Thursday, August 18th!

Kaye

NEW MEMBER ORIENTATION - SEPTEMBER

September 13, 2011 - 5:00 (prior to the chapter meeting)

If you are new to the Portland Chapter or you are looking for opportunities to participate in the CSI Chapter please come to the Portland Chapter new member orientation. Meet the board, find out information about the various committees and learn about all the opportunities this wonderful organization has to offer.

RSVP or questions to Jane at 503-805-2500 or jane@portlandcsi.org.

[Back to Top](#)

Membership

Every1Counts Membership Recruitment Campaign 2011

Make 1 Phone Call -- Send 1 Email -- Have 1 Conversation

Help our Chapter regain the effects of the recession. Recovery is just a phone call, or an email, or a conversation away. Visit www.csinet.org/eoc.

NEW AND RENEWING MEMBERS - MAY

Mark T. Barney, CSI, CDT, AHC; Northwest Hardware Consultants; member since 2002
Mark Beasley, CSI; Benson Industries; member since 1994
Dan J. Crates, CSI; STO Corp.; member since 2011
Chris Ferguson, CSI; Atlas Supply, Inc.; member since 1996
David C. Haug, CSI; Insulfoam; member since 2005
Dale A. Kuykendall, CSI, CDT; dalekuykendall@yahoo.com; member since 1986
Solvei Neiger, CSI, AIA; Zimmer Gunsul Frasca Architects, LLP; member since 1995
D. Dustin Posner, CSI, CCCA, AIA, NCARB; DDP Architecture, LLC; member since 2009
Patrick T. Ravins, CSI; Maxxon Northwest; member since 1982
Austin Sloat, CSI, AIA; Neumann Sloat Architects LLP; member since 2009
Tim W. Spencer, CSI; BASF Wall Systems, Inc.; member since 1986
James Sullivan, CSI; Dur-A-Flex; member since 2011 NEW
James C. Waddell, CSI; Panduit; member since 2006
Bryan Christopher White, CSI; Professional Service Industries, Inc.; member since 2011

NEW AND RENEWING MEMBERS - JUNE

Doug Allen, CSI, CDT; ASSA ABLOY Door Security Solutions; member since 2011
Mike Baker, CSI; Mutual Materials; member since 1997
Janda M. Bauman, CSI; Viracon; member since 1998
Craig L. Cody, CSI; Architextures; member since 2011 NEW
Jerry Davis, CSI, CDT, AHC; Bell Hardware of Eugene, Inc.; member since 1986
Donald D. Eggleston, CSI; SERA Architects, P.C.; member since 1970

Joseph C. Gehlen, CSI; Kramer-Gehlen & Associates; member since 1988
 Scott W. Harris, CSI; Jon R. Jurgens & Associates, Inc.; member since 1999
 Kathy Hempel, CSI, CCA; DeaMor Associates, Inc.; member since 2009
 Craig Jaeger, CSI, CDT; Jaeger @ Erwert General Contractors; member since 1986
 Marc A. Labadie, CSI; TVA Architects, Inc.; member since 1994
 Richard McBride, CSI; McBride Architects, P.C.; member since 1996
 Raoul Meekcoms, CSI; R&S Roofing and Specialty Sales; member since 1982
 Glen A. Miller, CSI; GA Miller Architecture; member since 1997
 Dennis Milsten, CSI; Westmark Products; member since 1977
 Patrick M. Murphy, CSI, CDT; Basalite Concrete Products; member since 1977
 Steve O'Hollaren, CSI; ICD High Performance Coatings; member since 2009
 Loy K. Rusch, CSI; MCM Architects PC; member since 1998
 Douglas W. Sams, CSI, CDT, AIA, LEED AP; Zimmer Gunsul Frasca Architects LLP; member since 2002
 Frank Stewart, CSI; Western Wood Products Association; member since 1992
 James B. Wilson, CSI, CCS; SRG Partnership, P.C.; member since 1989
 James A. Wright, CSI, CCS; MCM Architects PC; member since 1995

[Back to Top](#)

Chapter Events & Information

[Click Here for Complete Calendar](#)

Aug 9 - **Chapter Meeting**, Member Appreciation Picnic, Oaks Park

[Click Here for Event Info](#)

August 18 - **Golf Tournament**, Langdon Farms Golf Club, Aurora, Oregon

[Click Here for Golf Info](#)

September 13 - Shriners Hospital (dinner meeting), The Governor Hotel

Notes of Board Meetings

[Click Here](#) to read notes from prior Board meetings.

[Back to Top](#)



Institute and Region News

The Construction Specifications Institute (CSI): <http://www.csinet.org/>

The CSI Academies: Learn more and Register, [Click Here](#)

Northwest Region CSI: Click on Map for Region Website.

Northwest Region Chapter Meetings and Contacts

Big Sky Chapter	(Last Tuesday) Jan O'Brien, CSI 406-245-6363
Capital Chapter	(Third Thursday) Chris Veit, CSI, CCS 503-390-0291
Cook Inlet Chapter	(Third Tuesday) Mark Hughes, CSI 907-267-5163
Idaho Chapter	(First Tuesday) Karen Morris, CSI 208-343-3620



Mt. Rainier Chapter (First Thursday) Bob Kenworthy, FCSI, CCS 253-931-4904
Portland Chapter (Second Tuesday) Jane Ellsworth, CSI 503-805-2500
Puget Sound Chapter (Second Thursday) Andrew Estep, CSI 206-382-3393
Spokane Chapter (Second Thursday) Thomas Gerard, CSI 509-328-2771
Willamette Valley Chapter (Last Thursday) Melanie Wittkop-Fort, CSI 541-485-0922



"My membership in CSI is not only fun,
it's part of my plan for long-term
employment in the industry..."



News from Allied Organizations

Portland Chapter AIA: <http://www.aiaportland.com/>.

Cascadia Green Building Council: <http://cascadiagbc.org/>

ASPE Columbia Pacific Chapter 54: <http://www.aspeportland.org/>

[Back to Top](#)

[Forward email](#)



Try it FREE today.

This email was sent to jane@portlandcsi.org by jane@portlandcsi.org |
[Update Profile/Email Address](#) | Instant removal with [SafeUnsubscribe™](#) | [Privacy Policy](#).

Portland CSI | P.O. Box 2958 | Vancouver | WA | 98668